

Communicator

Published by the Cannon Township Board, Kent County, Michigan

Summer 2006

From the Supervisor's Desk...

Kent County Senior Millage

We have an important election right around the corner on August 8, 2006. This is the Michigan Primary election, which will designate who will represent each party come November for the general election.

There are many candidates for the different parties (Republican Party, Democratic Party and Independents) all looking for their party's support, but one vote that needs strong consideration is the "Kent County Senior Millage".

The Kent County senior millage serves 12,000 people a year with 39 different services that enable the elderly to live independently in their own homes. Millage funded services have shown to save health care dollars in the long run. More than half of the millage dollars go for priority services such as home delivered meals, personal care aides, respite care, transportation, and prescription assistance, which help the frailest people stay in their home. A 2004 survey done by the Grand Rapids Community Foundation found two thirds of older adults who reported needing help with daily living activities weren't getting their needs met.

These senior services are not just for the Cities of Grand Rapids, Kentwood and Wyoming, but available to the elderly citizens of Cannon Township as well. I encourage all Cannon Township citizens, (especially seniors and families with seniors), to learn as much as possible about the senior millage ballot proposal so an informed decision can be made on August 8.

Renewing this millage, at a rate of 1/3 of a mill, will cost an owner of a \$160,000 home a total of \$26.40 per year, (which is an extra \$6.40 more than what is being paid under the expiring millage). The .33 mills will generate \$6.5 million annually for needed senior services.

If this millage passes, Cannon Township's needy seniors should contact the county senior services programs listed on the web site, www.kentseniormillage.com or call 222-7068 for additional information. You can always contact the Township offices for assistance as well.

Please remember to vote this August 8. Many contests are determined in the Michigan Primary election, so this makes your vote as important as the general election vote.

Pete MacGregor, Township Supervisor

Ramsdell and M-44 Study

Michigan Department of Transportation (MDOT) will be assisting the University of Minnesota (UMN) in a State of Minnesota-led State Pooled Fund project to study gap acceptance at rural intersections. One of the tasks associated with this project is the collection and analysis of macroscopic vehicle trajectory and driver gap acceptance data at a rural intersection in each partner state.

The M-44 and Ramsdell intersection has been chosen for this Rural Intersection Surveillance Study. The UMN intends to deploy a portable intersection surveillance system for approximately two months. In this deployment, an array of radar stations and laser scanners will be used to collect driver behavior and gap acceptance data. Radar will be placed along M-44 to determine the location, speed, and lane of travel of vehicles approaching the intersection. Laser scanners will be placed at the minor road approaches to determine vehicle trajectories and to determine the point at which a gap was accepted. Both the radar and laser stations will be powered by portable generators.

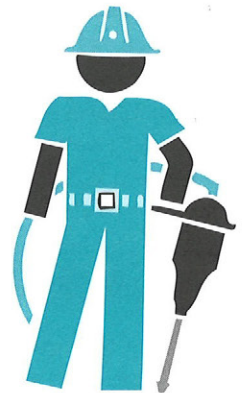
The UMN project team is expected to arrive on July 10th and begin collecting data on July 17th. This data collection will last approximately two months.

On site, it is expected there will be a data collection trailer and a power station consisting of five 4500 watt generators. Past studies have shown that the generators will fire up every 4 hours for approximately one hour. MDOT is told that the generators are not loud but there might be a possible noise disturbance. There will also be data collection devices around the intersection and mounted on 3 lb. sign posts.

This is a data collection study only. Motorists will see the generators, sensor stations, etc., but the drivers will not be given any information regarding the safety of the intersection.

MDOT is hopeful these studies will lead to advancements in ITS technologies that may be used on our roadways to improve safety and service to MDOT customers.

At the start of the study and throughout, the status of the study will be provided.

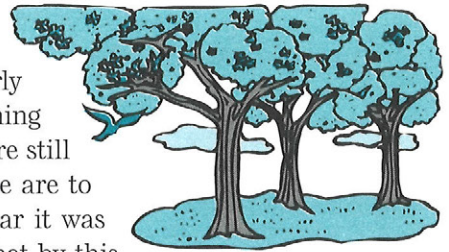


Dick Davies. Trustee

IF YOU LIVE IN THE LAKES DISTRICT, THE FERTILIZER ORDINANCE APPLIES.
CHECK OUR WEB SITE (WHAT'S NEW) FOR A LIST OF PLACES TO GET
PHOSPHORUS FREE FERTILIZER.

Trail Update

The news is that there is no news. Everyone seems to be eagerly anticipating the construction of the Township Trail running from the Township Center to Townsend Park. However, we're still waiting for the State Legislature to appropriate the funds we are to receive through the MDNR. We have been told that last year it was August before the Legislature got this done, so my hope is that by this August, we'll have the funding in place and be able to start. Even though we have a good fund balance built up due to the yearly millage dollars, we are not allowed to bid the project until the funds are appropriated by the State.



If you're new to the area and haven't yet heard, this trail will run along Belding Road east of the Township Center then head south when it reaches Summerset Meadows. It will pass through Summerset Meadows and Dix Farms, then turn east again through some easements on properties that border Kreuter Road. From there, it will take a short jog south on Sunfish Lake Ave. and cross through the cemetery on the Kreuter easement until it reaches Ramsdell Ave. After crossing Ramsdell, the trail will head south through Townsend Park until it reaches the parking area just north of Bear Creek.

Bonnie Shupe , Township Clerk

Tax and Assessing information will now be available through the Cannon Township Website!

Beginning the first of July, you will be able to access your property tax and assessing information at any time 24 hours a day 7 days a week. You will be able to find and check your Property Taxes for amounts due, amounts paid and amounts unpaid. You will also be able to check your Assessing information such as Taxable Value, State Equalized Value and other information on your property.

We anticipate this service to be a help to all our citizens. If you have internet access you can retrieve the information you need outside of the normal Cannon Township office hours and on weekends.

On the Township's website, www.cannontwp.org, there will be a link to our Tax and Assessing vendors' web hosting site. Follow the directions on the site to proceed to get the information you are looking for.

If you have trouble getting the information you need, you can always call the Treasurer's office during normal working hours for assistance.

Dan Barker , Cannon Township Treasurer



The Cannon Township Fire Department would like to introduce our two newest members.

James Palm started with us on August 22, 2005 and now has received his Michigan Firefighter I & II credentials and his Hazmat Awareness and Operations certification. James is currently in training for his Medical First Responder license.

Robert Schmitt also started with us on August 22, 2005. Bob has his Michigan Firefighter I & II credentials along with his Paramedic license and Hazmat Awareness and Operations certification.

We welcome and congratulate our newest members!

I would like to thank all of the residents of Cannon Township in helping reduce the amount of wild land fires this Spring. We have only had four grass/brush fires and two burning complaints, compared to seven fires and thirteen complaints from one year ago. As a reminder, burn permits are required in Cannon Township and cost nothing, so please call 874-9725 before you burn.

As you are outside doing lawn work, take a minute and inspect your driveway for branch obstructions. In some of our recent calls, branches prevented many of our trucks from getting close to the scene when time was critical. Many people do not realize that our vehicles have equipment that is exposed and we cannot drive through these tight quarters. So please take a minute and cut back the branches so that in the event you need us to respond, we can arrive quickly.

During the next few months, the risk for severe weather will be at its annual highest. Severe weather means the atmospheric conditions are right for thunderstorms that can produce high winds, intense rainfall, large hail, lightning and even tornadoes. Take a minute and make sure you are familiar with the signs and warnings of springtime inclement weather. If nothing else, take this opportunity to discuss this section with the other members of the family so that they know where to go and what to do when the weather turns nasty.

Know the differences between a watch and a warning when the National Weather Service issues an alert. The four most available weather warning systems are your television, radio, a NOAA weather radio and your computer.

The watches and warnings are defined as:

Severe Thunderstorm Watch: Conditions are conducive to the development of severe thunderstorms in and close to the watch area.

Severe Thunderstorm Warning: A severe thunderstorm has actually been observed by spotters or indicated on radar and is occurring or imminent in the warning area.

continued on next page

continued from previous page

Tornado Watch: Conditions are conducive to the development of tornadoes in and close to the watch area.

Tornado Warning: A tornado has actually been sighted by spotters or indicated on radar and is occurring or imminent in the warning area.

Planning will help make sure your family has a severe weather action strategy when bad weather strikes. This is especially important during the summer months when many children are home alone when the possibility of severe weather is the highest. Make sure all members are familiar with the safest spot in your home, apartment or condominium. In most cases, the safest spot will be in the lowest floor of the home, in the smallest room without windows. It is also recommended that you have an emergency kit that contains a flashlight, a battery powered radio and extra batteries.

As you start planning for those cookouts and fireworks, here are some tips to stay safe:

For fireworks, the Consumer Product Safety Commission offers these recommendations:

- Do not allow young children to play with fireworks under any circumstances. Sparklers, considered by many the ideal “safe” firework for the young, burn at very high temperatures and can easily ignite clothing. Children cannot understand the danger involved and cannot act appropriately in case of emergency.
- Older children should only be permitted to use fireworks under close adult supervision. Do not allow any running or horseplay.
- Light fireworks outdoors in a clear area away from houses, dry leaves or grass and flammable materials.
- Keep a bucket of water nearby for emergencies and for pouring on fireworks that don’t go off.
- Do not try to relight or handle malfunctioning fireworks. Douse and soak them with water and throw them away.
- Be sure other people are out of range before lighting fireworks.
- Never ignite fireworks in a container, especially a glass or metal container.
- Keep unused fireworks away from firing areas.
- Store fireworks in a dry, cool place. Check instructions for special storage directions.
- Observe local laws.
- Never have any portion of your body directly over a firework while lighting.
- Don’t experiment with homemade fireworks.



For cookouts:

- Keep grills away from anything that can burn, such as your house, car or dry vegetation.
- Keep all matches and lighters away from children.

continued on next page

continued from previous page

- Make sure everyone knows how to Stop, Drop and Roll.
- Do not leave your grill unattended while it's cooking and keep children and pets away.
- For charcoal grills, only use starter fluid designed for grills. Never use gasoline and never add fluid to an already lit fire.
- Before using a gas grill, check the connection between the propane tank and the fuel line. Make sure the venturi tubes (where the air and gas mix) are not blocked.

Until next time, have a safe and happy summer.

Driveways

DRIVEWAYS OVER 75 FEET IN LENGTH AND ALL SHARED DRIVEWAYS are required to maintain a minimum of cleared width of 20 feet; cleared width shall be maintained by the property owner or if a shared driveway by those persons having a legal right to use the driveway. Overhead branches shall be trimmed to a height of 14 feet above the ground; trimmed height shall be maintained by the property owner or if a shared driveway by the persons having a legal right to use the driveway.

Zoning Enabling Act

The state legislature recently adopted the Zoning Enabling Act which goes into effect on July 1, 2006. Procedural changes were made regarding notification for Zoning Board of Appeals requests. The Township is now required to publish a notice of public hearing for variance requests 15 days prior to the meeting. The Township publishes its notices in the Advance Newspapers. We must submit the legal notice on Thursday by noon for the next Tuesday publication. In order to meet these deadlines, all submittals for the Zoning Board of Appeals must be in our office NO LATER THAN THE THIRD TUESDAY OF THE MONTH FOR THE THIRD TUESDAY MEETING OF THE NEXT MONTH. For the remainder of this calendar year:

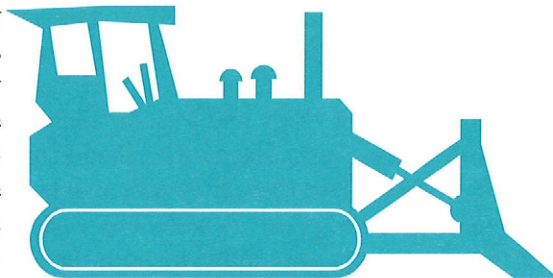
Meeting Date	Submittal date
July 18	June 27
August 15	July 25
September 19	August 22
October 17	September 19
November 21	October 17
December 19	November 21

Because of the added publishing requirements, the cost of an application has been raised to \$200 for a regular meeting and \$400 for a special meeting.

Christine James, Zoning Administrator

Kent County Road Commission – Sealcoat Program

Sealcoating of our County roads has been a very productive improvement program for Kent County Road Commission for a number of years. Again this year, we will be placing sealcoat on approximately 100 miles of County roads to extend the life of the road for area motorists. The process is a two-step application of asphalt emulsion and stone. The emulsion serves two functions; one to fill cracks in the pavement, and second to bond the stone to the existing surface. The stone provides a renewed driving surface that increases tire traction and improves stopping distance for increased safety.



The sealcoat process allows for quick application and driver access to the roadway. Once the stone is applied and rolled into the emulsion, curing or setting of the asphalt binder begins to take place immediately. Cold and wet weather hampers the curing of the asphalt emulsion and can cause longer delays in traffic or possible failures in the final product.

Kent County Road Commission places “loose stone” signs to inform motorists, pedestrians, and bikers that a sealcoat has been placed. Adequate stone needs to be placed to insure coverage of the asphalt emulsion, to prevent tracking of the emulsion, and to provide a uniform driving surface. Kent County Road Commission will sweep the surface of newly placed sealcoated roads approximately 48 hours after placement of the stone. Sweeping will pick up any excess loose stone, but must be done after the stone has completed bonding with the emulsion. “Loose stone” signs remain in place until the sweeping phase has been completed.

The cost to place a sealcoat surface is approximately \$20,000.00/mile of two-lane road, and the life expectancy is 3-5 years depending on the conditions of the existing road. By comparison, a one-course overlay of bituminous asphalt pavement 1.5 inches thick is approximately \$75,000.00 with a life expectancy of eight years.

With declining revenues, our goal is to keep as many miles of County roads in good or fair condition as possible. Using the sealcoat process allows us to improve and protect more miles of road for Kent County motorists with the resources we have available.

Township Roads

The summer program for major repairs on our Township roads includes crush, shape and pave on 7 Mile Rd. (Blakely to Courtland), Wilkinson (South of 9 Mile Rd.), Cardinal (West of Ramsdell) and Robin Hill (East of Egypt Valley).

Also, the following roads will include micro surfacing with chip seal: Hickory, Crabapple, Sunfish Lake Ct., Cristo, Vista Royale Ct., Surf (Courtland to Vista Royale) and Siesta (Vista Royale to Cristo). In addition to these limestone will be spread on Tiffany between 6 Mile and Krueter.

All of these repairs are funded by both the Kent County Road Commission and Cannon Township. Future repairs next year could include Ramsdell (South of Belding Rd.) and Cannonsburg Rd. funded by the County, Egypt Valley and Krueter (Ramsdell to Tiffany), funded by both the County and Township.

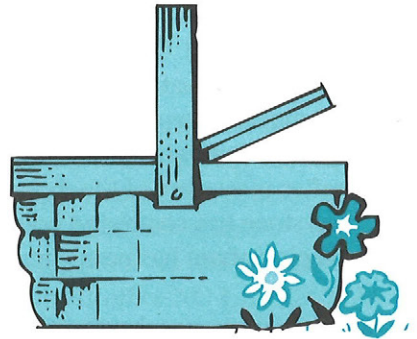
Dick Davies, Trustee

From the Historical Society

The annual picnic will be held on Tuesday, July 18th at 6:30 PM at the Museum on Cannonsburg Road. Please bring your place setting and a dish to pass. Everyone is welcome to attend.

The museum is now open every Sunday from 2 PM to 4 PM. It will also be open during the Cannonsburg Celebration on July 29th.

For more information, contact Margaret Janose at 874-6865.



IN MEMORIAM – Howard M. Dodd

The Township Board, Zoning Board of Appeals, and staff wish to extend their deepest sympathy to the family of Howard Dodd. At the time of his sudden death, April 14, 2006, he was Chairman of the Zoning Board of Appeals. Howard valued work, honesty, integrity, and individuality. He enjoyed cooking, reading, woodworking, collecting antiques, and caring for his pets. He leaves behind his wife, Donna and children Ward, Kassi, and Hilary to cherish his memory. The Township will miss his valuable knowledge and fair decisions regarding zoning issues.

Kent MSU Extension "Stuck on Gardening" Garden Tour July 15 & 16

Garden enthusiasts will be delighted this July while visiting 10 exceptional Master Gardener gardens in Kent County. The garden tour is designed to be educational for those who participate, young or old. Kent MSUE Master Gardeners will be on hand at every site to answer your gardening questions on Saturday, July 15, from 10:00 AM to 5:00 PM and Sunday, July 16, from 12:00 noon to 6:00 PM.

Garden visitors can expect to see a wide variety of site conditions and design styles including lush shade gardens, hot and sunny mixed borders, exceptional urban gardens, water gardens, garden art, roses, 100+ orchids summering on a deck, an extensive collection of trees grown as a managed woodlot, and a mini "country estate" in the city.

Proceeds from the garden tour benefit the Kent MSU Extension Junior Master Gardener Program. This volunteer program equips young gardeners with current, research-based gardening knowledge so that they can volunteer in their home communities.

Tickets are available at Kent MSU Extension 775 Ball Ave., NE, Grand Rapids, MI 49503
616/336-3265 Monday – Friday, 8:30 AM – 4:00 PM

Tickets can also be purchased at any site on the days of the Tour. A list of addresses can be obtained at the Kent MSU Extension Master Gardener website at www.stuckongardening.com or by calling 616/336-3265. Ticket Prices: \$10.00 Adult (no charge for children 15 & under)

<p>CONTACT: Rebecca Finneran Horticulture Educator Kent MSU Extension 775 Ball Ave., NE Grand Rapids, MI 49503 Telephone: 616/336-3265</p>	<p>OR</p>	<p>Judy Sink Junior Master Gardener Coordinator Kent MSU Extension 775 Ball Ave., NE Grand Rapids, MI 49503 Telephone: 616/336-3265</p>
---	-----------	---

Tour Addresses:

6786 Tanglewood SE, Cascade Township	1850 Forland Ct NE
2648 Lake Dr SE, East Grand Rapids	1304 Mapleview SE, Kentwood
3250 Midland Dr SE, Grand Rapids	Garden of Hope, 223 – 68th St SE, Cutlerville
3440 Bradford NE, Grand Rapids Township	3755 Earle St SW, Grandville
Grand Ideas Garden, 775 Ball Ave NE, Grand Rapids	4606 Burton St SW, Grandville



A Saturday of Oldtime Fun & Games

Community Flea Market . Cannonball Relay . Fresh Fruit Pie Bake-off
Horseshoe Tournament . Painted Duck Races . Ice Cream Eating Contest
Cross-cut Saw Contest . Cherry-spitting . Living Museum Events
Live Music & Dancing . Food & Beer Tent . Greet your Neighbors

July 29th in "Downtown" Cannonsburg
8:00 am - 9:00 pm

To request a Flea Market reservation or a Pie Bake-off entry form
e-mail don @honeycreekinn.com or call 874-7849



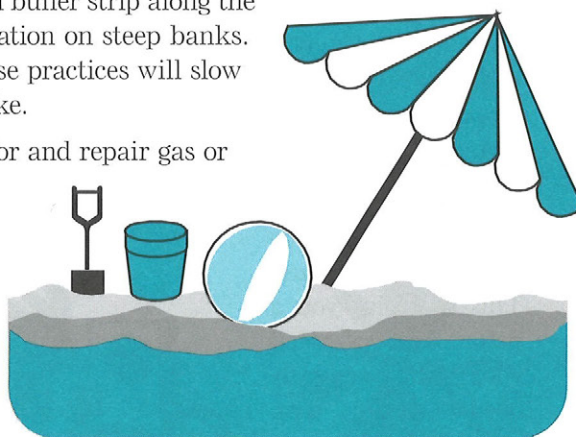
Thoughts for the Summer

"A lake is the landscape's most beautiful and expressive feature. It is earth's eye; looking into which the beholder measures the depth of his own nature."
 -Henry David Thoreau in *Walden*

Cannon Township is blessed with many lakes, as well as streams and wetlands. This time of year, our residents are happily enjoying the lakes' many recreational opportunities: boating, swimming, fishing, sunbathing, jet skiing and more. However, as you enjoy nature's bounty, please remember that lakes have fragile ecosystems. Human activity can interfere and damage a lake's natural ecosystem, thus, changing the lake forever. If you live on or near one of the Township's lakes, follow these simple steps to protect your lake:

- Use smart lawn care. Less lawn means more lake protection (and less work for you!). It takes more chemicals to keep a lawn green and weed free. The chemicals applied to your lawn drain into your lake. Chemical-free lawn care ideas are detailed later in this article.
- Conserve water inside and outside your home.
- Avoid washing your car near the lake. Go to a car wash instead (where waste water is treated). Use low-phosphate, biodegradable products if you do wash your car.
- Manage your shore line. Leave an unmowed buffer strip along the lake at least 20-feet wide. Plant native vegetation on steep banks. Mow lawn to about two to three inches. These practices will slow water flow and filter sediments entering the lake.
- Keep watercraft in good condition. Check for and repair gas or oil leaks.

You can learn more about lake health through the free publication "Your Lake & You." It is available at Cannon Township Center. This publication explains basic lake science, and the ways you can protect (or harm) your lake. Please stop by and pick up a copy.



continued on next page



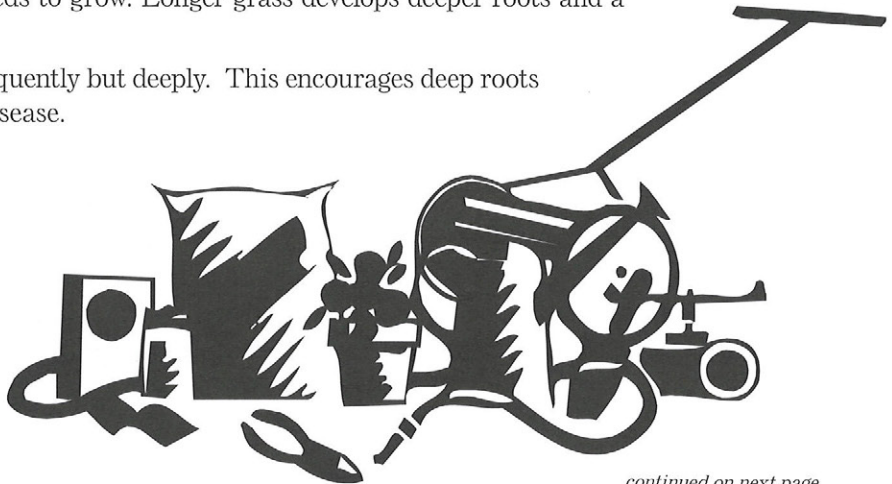
Low Maintenance Landscape

Gardening is one of the most popular past times in the United States. If you're a gardener, or are thinking about cultivating your green thumb, why not try using native plants in your landscaping? Native landscaping is also low maintenance. Native plants are adapted to our local soils and climate, and therefore, are hardier than non-native varieties. This means they require little watering, fertilizers and pesticides. Of course, this is healthier for you and our waterways. Native plants also support native wildlife. The DEQ has a free booklet listing just a few of the many shrubs, tress, flowers and other plants native to Michigan. You can get your free copy at the Cannon Township Center.

Smart Lawn Care

Another means of low maintenance (and low-cost) landscaping is through chemical-free lawn care. Rather than driving to the home and garden center and lugging bags of chemical laden fertilizers (did you do that over the blistering hot Memorial Day weekend?), why not try these easy tips for a healthier lawn?

- Don't bag grass clippings; mulch them! Many lawn mowers have a mulching device. This chops grass clippings into fine pieces. The clippings will drop between grass blades and thus will be natural fertilizer for your lawn. The same can be done with fall leaves. If you must bag your grass, why not use the clippings on your compost pile or use them as mulch in your garden?
- Keep the mower blade sharp.
- Don't cut grass more than one third of the grass blade (about 2 1/2 to three inches). Sheering a lawn too short stresses the grass by drying it out. The shorter grass blades leave more open space for weeds to grow. Longer grass develops deeper roots and a thicker lawn.
- Water your lawn infrequently but deeply. This encourages deep roots and discourages lawn disease.
- Have your lawn soil tested before applying any type of fertilizer. This will give you a better idea of what your lawn really needs rather than relying upon a "one size fits all" fertilizer.



continued on next page



continued from previous page

- Look into using corn gluten meal as a weed control. Or pull weeds by using a weed digger.
- If you are building a new home or relandscaping your existing home, design less lawn and use grasses that are disease and drought resistant.

For more information on low-maintenance lawn and great horticultural information, go to the website www.lesslawn.com. Also, you can have your lawn or garden soil tested at the Michigan State University Cooperative Extension Services, 836 Fuller N.E., Grand Rapids. Phone 336-3265 or visit them online at www.msue.msu.edu.

The Rogue River Watershed Council

Cannon Township is an active participant of the Rogue River Watershed Council. We seek to educate the public about watershed issues, assist community planners in development issues in and around the Rogue River, and strive to create good stewardship of the Rogue River Watershed.

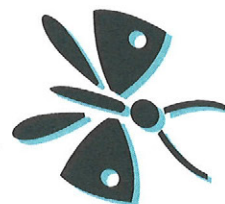
Storm Water Web Page

The Cannon Township watershed website will soon have a Storm Water page added. This page will give you information on how you can prevent storm water pollution, education, links to other sites, and the latest news on storm water issues in Cannon Township.

Waterfest Thank You

I want to extend a big “thank you” to everyone who participated in the 2006 Bear Creek Waterfest on April 29 at Townsend Park. We had a large turnout! The fun activities helped families learn about the Bear Creek Watershed and the Hearty Country Breakfast was delicious. This was my first year organizing the event and I had a ball! I can’t wait until next year. Until then, please keep our beautiful watershed clean and healthy so our children’s children can enjoy it as much as we do!

Kim Sapkowski, Watershed Administrative Assistant



Septic System Care and Maintenance

Your septic system is your personal onsite water treatment plant. Sound expensive? It sure could be! Be careful what you put down your drain, service your septic tanks regularly and your properly maintained personal water treatment plant will:

- Protect you from potentially embarrassing and inconvenient sewage backups
- Provide you peace of mind
- Protect your investment
- Spare you a costly drain field replacement.

Your septic system is comprised of one or two tanks, maybe a lift station, and a drain field. Sewage solids settle to the tank bottom where bacterial action reduces solids to sludge. Water carrying dissolved and suspended solids pass to your drain field where the water is safely absorbed and cleansed by the soil. Bacterial and enzyme action is critical in breaking down household sewage, reducing incoming volume 95%. When sludge and concentrations of water burdened solids are carried into your drain field clogging will occur, eventually leading to failure. Drain field replacement can cost \$4,000 to \$10,000 and installation could damage your landscape.

Do:

- Pump your tanks every 2-4 years, cleaning frequency is determined by family size.
- Use an effluent filter to trap floating solids in the tank.
- Retain location maps of your septic system.
- Retain maintenance records showing the nature and frequency of service.
- Spread out laundry. Repair leaky faucets or running toilets. (Excessive water flow pushes more dissolved solids into your drain field.)
- Use your garbage disposal sparingly. (A disposal doubles the rate of solids build-up.)

Don't:

- flush anything that won't quickly decompose, i.e. plastic, paper towels,
- flush sanitary napkins, tampons, filtered cigarette butts, grease, cooking oils.
- put any chemicals that harm or retard the natural bacterial action, i.e. anti-bacterial soaps, paints, solvents, chemicals, pesticides, oils, acids.
- route your water softener discharge into your septic tank. (Salt erodes concrete)

David Gorman, Stoneybrook Sanitation, Fuller Septic Service



A Citizen's Guide to Auto Care

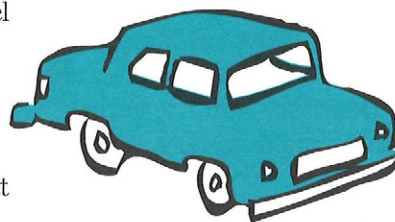
How we take care of our cars, trucks, and other vehicles greatly influences the health of the Grand River. You can do your part to stop pollution at the source by preventing detergents, oil, grease, and gasoline from entering street drains, which lead directly to nearby streams and lakes.

Vehicle Washing

- Look for non-toxic and phosphate-free cleansers at your local grocery store.
- You can also use alternative cleaners, such as baking soda and lemon juice. Avoid products with bleach, ammonia, lye, or petroleum distillates (see chart).

Fuel and Oil

- When fueling, avoid topping off! Remember that fuel expands as it warms up in your tank.
- Store fuel only in approved containers.
- Routinely check for and fix oil and fuel leaks.
- Recycle your waste oil. Never dump it down a street drain!



Engine care

- Keep vehicle engines properly tuned for efficient fuel consumption and clean exhaust.

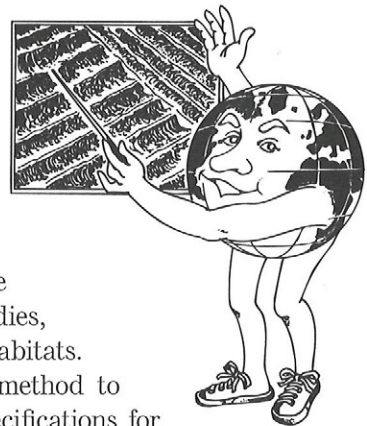
Product	Better Alternative
Bleach	Borax or hydrogen peroxide
Chrome cleaner	Apple cider vinegar to clean and baby oil to polish
Engine cleaner	Steam clean the engine in a dedicated service area
Fiberglass stain remover	Baking soda paste, scrub pad, and "elbow grease"
Paint stripper	Physically remove old paint without chemical use
Scouring powders	Baking soda and "elbow grease"
Window cleaner	Vinegar and lemon juice mixed in lukewarm water
Wood polish	Olive oil or almond oil for interior wood; use water- or borax-based products

Use a drip pan when doing engine maintenance. Drippings left on the cement get washed into nearby drains and end up in our streams.



Natural Features Policy Presentation

On June 13, the Bear Creek Watershed Committee presented a draft of the Best Management Practices for Natural Features policy to the Planning Commission. It is our hope that this policy will be adopted by the Board and Planning Commission and used to encourage developers to use these practices when creating a site plan for their project.



The policy seeks voluntary protection for the features that make Cannon Township what it is – protecting the wetlands, water bodies, water courses, woodlands, scenic vistas, steep slopes and critical habitats. The document addresses the benefits of these features, gives a method to perform a natural features identification assessment, presents specifications for natural features transition areas, recommended activities during construction, and discouraged activities in natural features areas. It provides for a Natural Features Advisory Team that may assist the developer, builder, and/or resident in the collection of the natural features information.

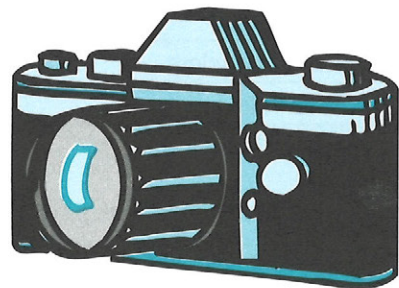
This draft policy is available at the Township Center, or you may view it on line at our website – www.cannontwp.org under “what’s new.” Please let me know your thoughts on this document.

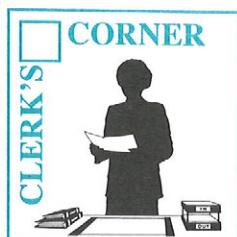
Bonnie Shupe, Township Clerk



Photography Contest!

What do Ada, Vergennes, Cascade, Grattan, Lowell, and Cannon townships have in common? Beautiful natural features. Historical sites. Precious open space. Also, we have the Eastern Townships Open Space Preservation Committee! In September 2007, this regional group will have a photography contest to depict what “open space” means to you. You have four seasons to capture the images of open space in your world that are important to you, so start snapping those photos! Please share the beauty of our local townships as you see it! Details are pending – more information to come in a later Township newsletter. Watch this space!





The August Primary is coming up quickly and there are many changes that everyone should be aware of.

1) We are using post card absentee ballot applications. These are good for both the Primary and the General elections. These were sent to all those on our permanent AV list. Please complete and mail or drop it off at the office. If you need an application, please call.

2) Polling places were changed after the Presidential Election in 2004 due to long lines and inadequate parking. We expanded from two polling places to five, so chances are good that your polling place has changed. Check the precinct map in this issue, or call the Township Center to find out where you vote.

3) If you haven't voted since 2004, you will discover new equipment at your polling place. In fact, there are two new pieces of equipment.

One is the M100 that will count your votes. The Precinct Inspectors will direct you through its use, but it works very much like the former Optech machine did. The ballot has also changed a bit. Instead of completing the arrow by drawing a straight line, you now need to darken the oval next to the name. Instead of a pencil or special marker, you now will use a black stick-style pen.

The other piece of equipment is called the "Automark." This will actually mark the ballot for you by using a touch screen or buttons. If you need the ballot read to you, a synthesized voice will do this through earphones. This is available if you choose to use it.

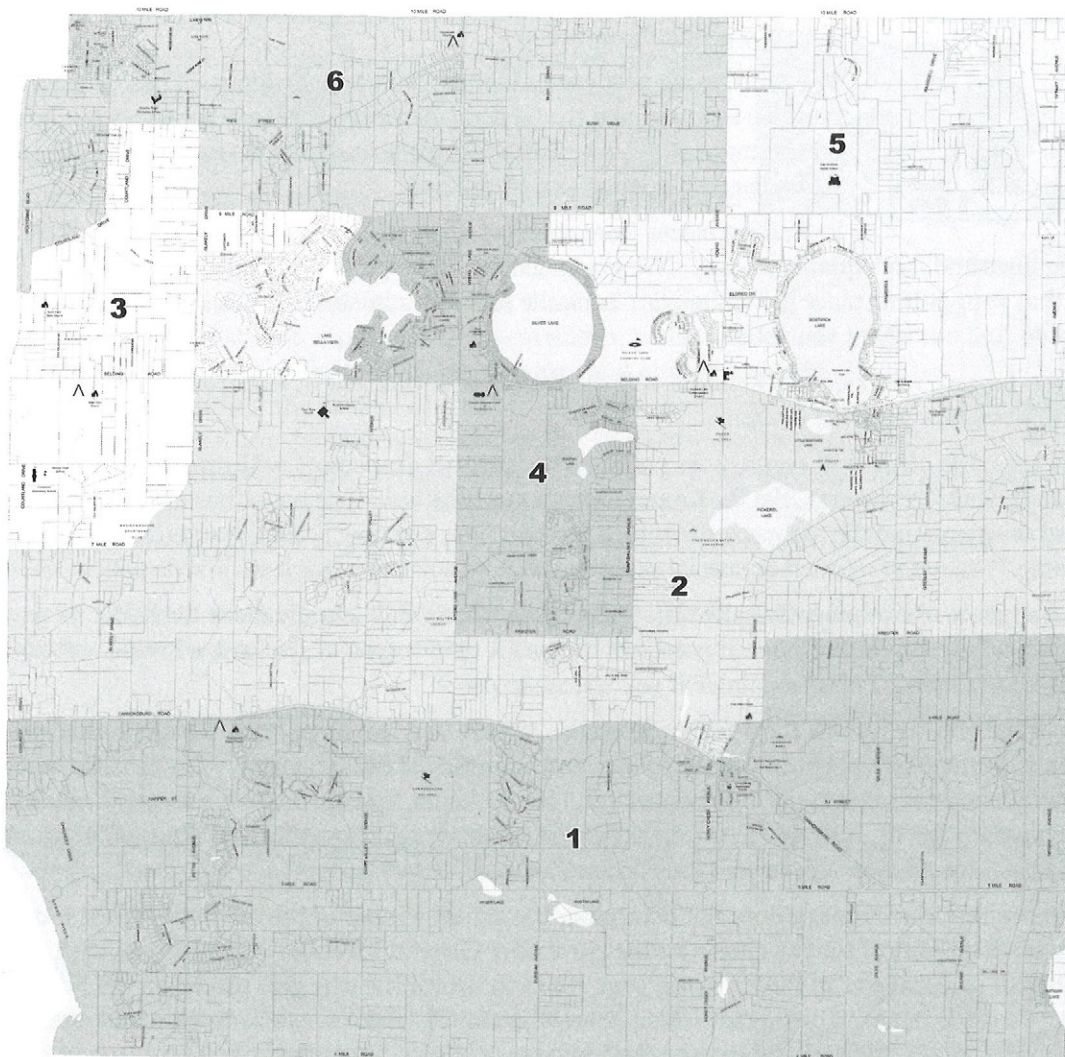
I encourage you to vote in the Primary election. There are two important positions that are on this ballot – the office of Drain Commissioner and the office of State Senator. The reason these are especially important is that our current senator, Ken Sikkema, is term-limited, so several candidates have chosen to run for his seat. The former Drain Commissioner, Roger Laninga, passed away while in office, so this election will be for that position, also.

Remember that the Primary does not determine the actual winner of the election. What it does is determine the Political Party's choice for the November General Election. Whether you wish to vote Republican or Democrat in the Primary, your vote will determine who gets placed on the November ballot. This is extremely important! Also, there are candidates for a new judgeship and a proposal on the ballot for the Senior Millage, for which anyone may vote, regardless of party.

The most common mistake voters make when they vote a primary ballot is choosing candidates from both political parties. When you get your ballot, you must decide whether to vote Republican or Democrat. **You cannot cross-vote!** If you do so, none of your votes will count, except the Judicial and millage votes which are independent of the partisan portion.

I hope to see you all at the polls or at the office voting an AV ballot. I ordered a lot of ballots and I hate wasting paper! Have a great summer!

Bonnie Shupe, Township Clerk



Scale 1" = 2000'

LEGEND

Precincts & Polling Places

- | | |
|--|---|
| 1 West Cannon Baptist Church
8700 Canterbury Rd. N.E.
Bloomfield Hills 48306 | 4 Cannon Township Center
9070 Bostwick Ave. N.E.
Bloomfield Hills 48304 |
| 2 Bella Vista Church
5000 Bostwick Ave. N.E.
Bloomfield Hills 48304 | 5 Bostwick Lake Congregational
8200 Bostwick Ave. N.E.
Bloomfield Hills 48304 |
| 3 Bella Vista Church
5100 Bostwick Ave. N.E.
Bloomfield Hills 48304 | 6 Crossroads Wesleyan Church
8501 Maple Lake Ave. N.E.
Bloomfield Hills 48304 |
| ^ Polling Location | |



CANNON TOWNSHIP
KENT COUNTY, MICHIGAN

Precinct Map

Printed 6/26/06

"DATES TO REMEMBER"

July 1	2006 Summer Tax Bills Mailed to Residents Quarterly Sewer Bills Mailed to Residents
July 3 & 4	INDEPENDENCE DAY OBSERVED – OFFICE CLOSED
July 10	Last Day to Register for Primary Election Township Board Meeting – 7:00 pm
July 11	Planning Commission Meeting – 6:00 pm
July 18	Board of Review – 9:00 am Zoning Board of Appeals – 7:00 pm
July 24	Township Board Meeting – 7:00 pm
July 31	QUARTERLY SEWER BILLS DUE
August 5	Office Open for Absentee Ballots 8 am – 2 pm
August 7	Last day to vote absentee ballot in office to 4 pm
August 8	PRIMARY ELECTION – Polls Open 7 am – 8 pm
August 14	Township Board Meeting – 7:00 pm
August 16	Zoning Board of Appeals – 7:00 pm
August 28	Township Board Meeting – 7:00 pm
Sept 1	Regular Office Hours Resume 8 am – 5 pm
Sept 4	LABOR DAY – OFFICE CLOSED
Sept 11	Township Board Meeting – 7:00 pm
Sept 12	Planning Commission Meeting – 6:00 pm
Sept 14	2006 SUMMER TAXES PAYABLE WITHOUT PENALTY
Sept 19	Zoning Board of Appeals Meeting – 7:00 pm
Sept 25	Township Board Meeting – 7:00 pm
Sept 27	Community Clean-up – 9:00 am – 6:00 pm
Sept 28	Community Clean-up – 9:00 am – 6:00 pm
Sept 29	Community Clean-up – 9:00 am – 5:00 pm
Sept 30	Community Clean-up – 8:00 am – 1:00 pm

Summer office hours are 7:30am to 4:30pm.

AV Ballots are available at the Township office. Please call or come in!

Remember to vote on August 8. Polls are open from 7am to 8pm.

Try out the new equipment.

Polling places have changed since 2004. Call the Township (874-6966) to find out where you vote.

Clip and Save E-mail Addresses

Supervisor, Pete MacGregor	pmacgregor@cannontwp.org
Clerk, Bonnie Shupe	bonnies@cannontwp.org
Treasurer, Dan Barker	dbarker@cannontwp.org
Trustee Diane Jones	dianecjones2005@yahoo.com
Trustee Jim LaPeer	jlapeer@cannontwp.org
Trustee Dick Davies	rrd8565@hotmail.com
Trustee Chuck Bloom	heronview@sbcglobal.net
Deputy Clerk, Nancy Popma	nancyp@cannontwp.org
Deputy Treasurer, Milissa Soderstrom	milissas@cannontwp.org
Zoning Administrator, Christine James	christinej@cannontwp.org
Code Enforcement Officer, Bob Devereaux	zeo@cannontwp.org
Administrative Assistant Sue Clarin	suec@cannontwp.org
Watershed Assistant, Kim Sapkowski	ksapkowski@cannontwp.org
Fire Chief, Harry Morris	Chief@Cannontwp.org
State Representative, Tom Pearce	tompearce@house.mi.gov
	Phone: 1-888-414-3684
State Senator, Ken Sikkema	senksikkema@senate.michigan.gov
	Phone: 1-800-774-1174
Congressman Vern Ehlers	www.house.gov/ehlers
	Phone: 1-202-225-3831
Cannon Township Web Site	www.cannontwp.org
Kent County Web Site	www.accesskent.com
State of Michigan Web Site	www.michigan.gov



CANNON TOWNSHIP
6878 Belding Road, NE
Rockford, MI 49341

Township Board

Supervisor	Pete MacGregor
Clerk	Bonnie Shupe
Treasurer	Dan Barker
Trustees	Diane Jones
	Dick Davies
	Chuck Bloom
	Jim Lapeer
Township Offices	874-6966
(Hours 7:30am – 4:30pm, Mon – Fri)	
Fax	874-8940
Fire Department	874-9725
Emergency	911

Township Board Meetings
2nd & 4th Monday, Monthly
7:00 pm, Township Hall

PRSRT STD
U.S. POSTAGE
PAID
ROCKFORD, MI 49341
PERMIT NO.1