

B.

Mesh

Textured Collection: Broadloom

A mesh is made up of overlapping strands connected in such a way that they set a barrier whilst at the same time allowing some things to pass through. Similarly, in life, focus only on the things that can be controlled and for the rest, let them pass.

Extended Specifications

Use Classification: (EN 1307)	Medium / General Commercial – 32
Construction:	Level Cut Loop (LCL)
Recycled Content:	Yarn – Stainproof SDX Eco (certain colours)
Fibre Type:	Stainproof SDX (Solution Dyed Nylon - 6)
Fibre Mass: (ISO 8543)	±900 (g/m²)
Total Thickness: (ISO 8543)	±9 (mm)
Total Mass: (ISO 8543)	±1860 (g/m²)
Standard Size (Broadloom):	4 (m)
Standard Backing:	FusionBac
Pattern Repeat:	±10.5cm (W) x ±9.5cm (L)



B.

Mesh

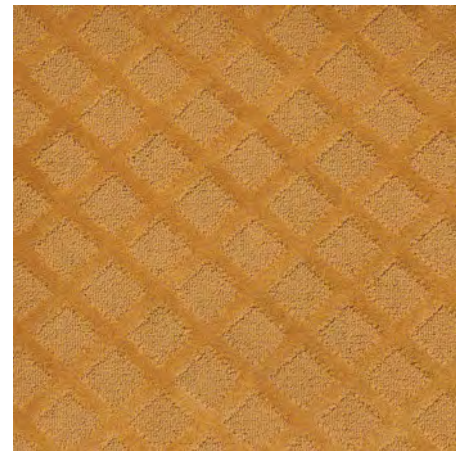
Textured Collection: Broadloom

Extended Specifications

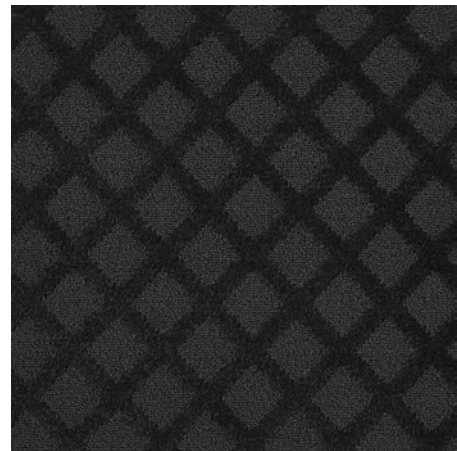
Fire Classification: (EN 13501) (ASTM E 648-08)	Cfl-s1	
Colour Fastness To:	Light	> 6
	Water	4 – 5
	Dry Rubbing	4 – 5
	Wet Rubbing	4 – 5
Electrostatic Propensity: (EN 14041) / (ISO 6356)	≤ 2 kV	
Sound Absorption: (EN ISO 354)	0,25 aw	
Sound Insulation: (EN ISO 10140)	27 dB	
Thermal Resistance: (ISO 8302)	0,1201 m².K/W	
VOC Tested: (ASTM D5116)	TVOC Emmission Rates with limits (GBCSA / GBCA /CRI)	
Castor Chair Suitability: (NF EN 985)	Intensive Use	
Staircase Suitability: (EN 1963) / (NF EN ISO 12951)	Intensive Use	
Warranty:	15 Year	
Guarantee:	5 Year	



B.



Bronze



Charcoal



Dove



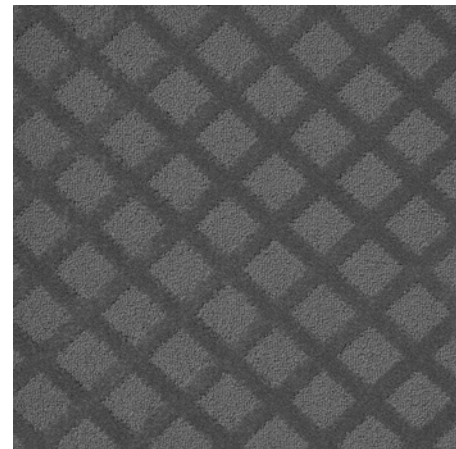
Earthy



Metal



Mustard



Silver

Mesh

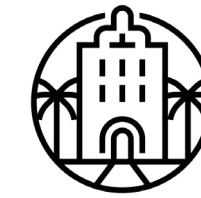
Textured Collection: Broadloom



Medium/General
Commercial



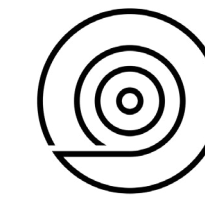
Commercial



Hospitality



Institution



Broadloom



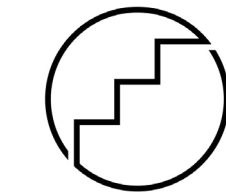
COLOURFAST
BLEACH RESISTANT
SDX



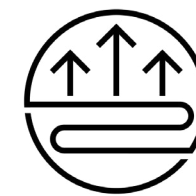
COLOURFAST
BLEACH RESISTANT
SDX
ECO



FUSION
BAC



Suitable for
Staircases



Underfloor
Heating



Made in South Africa
From Local &
Imported Goods



Eco-Friendly



REUSE
REDUCE
RECYCLE



ANTI ALLERGENIC



GREEN BUILDING COUNCIL SA
MEMBER ORGANISATION



bsi ISO 9001
Quality Management
Systems
CERTIFIED



bsi ISO 14001
Environmental
Management
CERTIFIED



bsi ISO 45001
Occupational
Health and Safety
Management
CERTIFIED



BELGOTEX GUARANTEE
5
YEAR



LIMITED WEAR WARRANTY
15
YEAR

Bill of Quantities

- Belgotex's MESH 4m wide Medium/General Commercial ±9mm FusionBac broadloom is manufactured from Stainproof SDX (Solution Dyed Nylon 6 for Extreme Conditions).
- This product is to be laid in accordance with the SANS 10186 fitting code of practice.
- Belgotex recommends the use of carpet protector mats where castor wheels are used.
- 15-year warranty and 5-year guarantee for broadloom.
- Made in South Africa.

Note: Belgotex offers customization of this product in colour. Please contact a Belgotex representative for more information.

Tufted Broadloom Disclaimer: Product Characteristics may vary due to the nature of manufacture. To combat colour variance do not install more than one dye lot in a single installation. Sample swatches have been cut from an overall design; therefore, the decoration and shades may vary. A difference in appearance from the pattern is likely, as the product is not intended to have a uniform appearance.

*All product names and logos are trademarks of BELGOTEX FLOORCOVERINGS® (Pty) Ltd. © BELGOTEX FLOORCOVERINGS® (Pty) Ltd. All rights reserved. Warranty and guarantee to limitations and conditions. For details contact BELGOTEX FLOORCOVERINGS® (Pty) Ltd.