

# B.

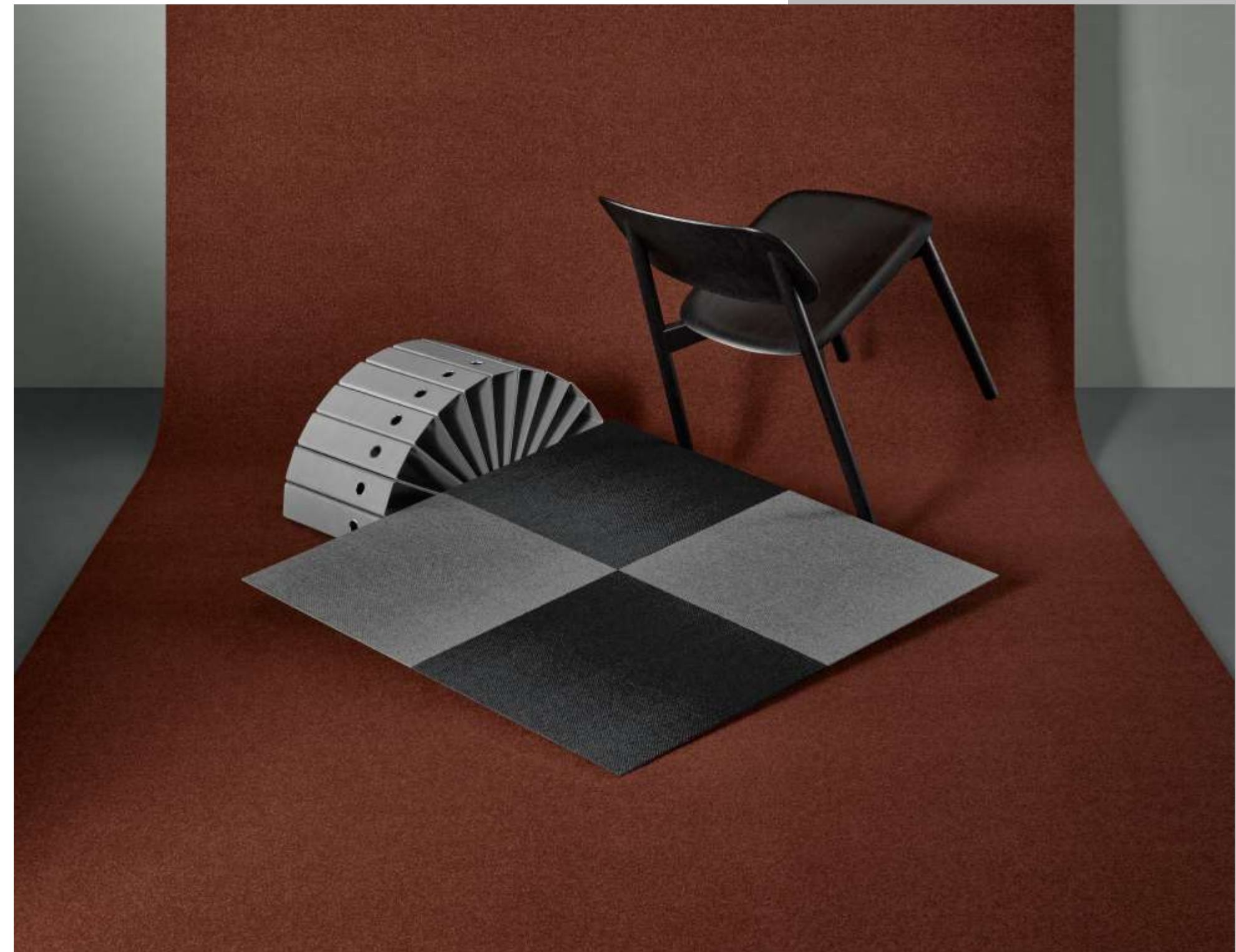
## Edit

### Accelerate Collection

Belgotex introduces Accelerate Edit - a state-of-the-art flooring solution designed for heavy commercial use in line with EN 1307 standards. This unique flooring product features a tufted multi-scroll loop pile construction, which seamlessly combines durability with aesthetic appeal.

### Extended Specifications

Use Classification: (EN 1307)	Heavy Commercial - 33
Construction:	Tufted Multi Scroll Loop Pile
Product Description:	Heavy Commercial SDN Tufted Loop Pile Bitumen Tile - SS
Recycled Content:	Yarn - Stainproof SDX Eco (Certain Colours) Backing - EcoBac S3 (On Request)
Fibre Type:	Stainproof SDX (Solution Dyed Nylon-6)
Fibre Mass: (ISO 8543)	±350 (g/m <sup>2</sup> )
Total Thickness (NexBac SX): (ISO 8543)	±5.5 (mm)
Total Mass (NexBac SX): (ISO 8543)	±3675 * (g/m <sup>2</sup> )
Standard Tile Size:	50x50cm
Standard Backing Type:	NexBac SX





B.

# Edit

## Accelerate Collection

### Extended Specifications

Fire Classification: (EN 13501) (ASTM E 648-08)

Colour Fastness To:

Electrostatic Propensity: (EN 14041 / ISO 6356)

Sound Absorption (NexBac SX): (EN ISO 354)

Sound Insulation (NexBac SX): (EN ISO 10140)

Thermal Resistance (NexBac SX): (ISO 8302)

VOC Tested: (ASTM D5116)

Dimensional Stability:

Castor Chair Suitability: (NF EN 985)

Warranty:

Guarantee:

Bfl-s1 Class

Light > 6  
Rubbing 4 - 5  
Rubbing 4 - 5

≤ 2.0 kV (CE Market)

aw 0.15

18 dB

0.0519 m².K/W

TVOC Emmission Rates within limits (GBCSA / GBCA /CRI)

Shrinkage & Expansion ≤ 0.2% in both directions

A: Intense Use

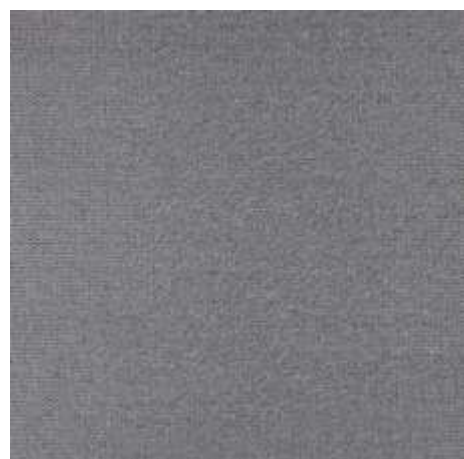
15 year

5 year

\*\*Weighted Average



B.



Calm



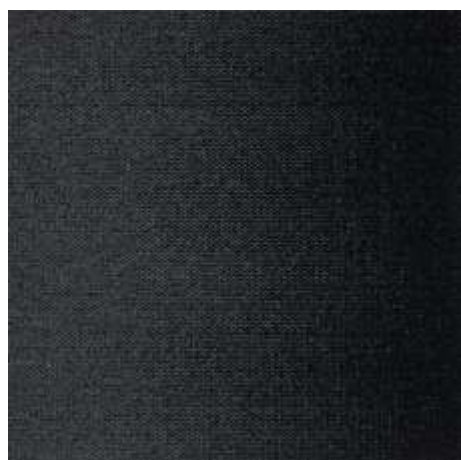
Comfort



Grounded



Solid



Strength

# Edit

## Accelerate Collection



### Bill of Quantities

- Belgotex's EDIT 50x50cm Heavy Commercial ±6mm NexBac tiles are manufactured from Stainproof SDX (Solution Dyed Nylon 6 for Extreme Conditions).
- This product is to be laid in accordance with the SANS 10186 fitting code of practice.
- Belgotex Accelerate 50x50cm to be installed in the following directions: Tessellated, Ashlar, Random Ashlar, Brick, Monolithic, Colour Mix & Random.
- Belgotex recommends the use of Carpet protector mats where castor wheels are used.
- 15-year warranty and 5-year guarantee.
- Made in South Africa.
- Green Tag level A Silver rated certification.

**Note:** Belgotex offers customization of this product in colour, backing and size. Please contact a Belgotex representative for more information.

\*All product names and logos are trademarks of BELGOTEX FLOORCOVERINGS® (Pty) Ltd. © BELGOTEX FLOORCOVERINGS® (Pty) Ltd. All rights reserved. Warranty and guarantee to limitations and conditions. For details contact BELGOTEX FLOORCOVERINGS® (Pty) Ltd.

**Product Disclaimer:** Product characteristic may vary due to the nature of manufacturing. To combat colour variance do not install more than one dye lot in a single colour tile installation. Where different dye lots and products are mixed and matched then size variations could take place and tiles might need to be altered during installation. If you are installing multiple colours in a random pattern, mixing dye lots together won't be a problem. Sample swatches have been cut from an overall design; therefore, the design and shades may vary. A difference in appearance from the pattern is likely, as the product is not intended to have a uniform appearance. During installation of this product there could be visible tile joins due to texture and design, this is not a manufacturing fault, tiles need to be moved around the in the installation.