

B.

# Berber Point 920

Berber Point 920 is an evolution. A product that has stood the test of time has now shed its skin to offer the commercial space an exploratory carpet experience. The new range delivers variety and creative flex without losing the robust, hard-working attribute that its reputation has been built upon.

## Extended Specifications

Use Classification: (EN 1307)	Heavy Commercial
Construction:	Structured Needlepunch
Recycled Content:	Face Fibre - Blend of Stainp roof Miracle Fibre & Stainproof Miracle Fibre Eco (Certain Colours)
Fibre Type:	Stainproof Miracle Fibre (Polypropylene)
Fibre Mass: (ISO 8543)	±920g/m²
Total Thickness: (ISO 8543)	±7mm on ResinBac/ ±7.5mm on NexBac
Total Mass: (ISO 8543)	±1317g/m² on ResinBac*
Standard Size - Broadloom:	4.2m
Fire Classification: (EN 13501) (ASTM E 648-08)	2 on ResinBac   3 on NexBac



Please note: Berber Point 920 is no longer available in shape formats; the design shown on the image is for inspiration only.



B.

# Berber Point 920

## Extended Specifications

Colour Fastness To:	Light 7 Water 4-5 Rubbing (Dry) 4-5 Rubbing (Wet) 4-5
Electrostatic Propensity: (EN 14041) / (ISO 6356)	≤ 2.0 kV
Sound Absorption: (EN ISO 354)	aw 0.20
Sound Insulation: (EN ISO 10140)	17 dB
Thermal Resistance: (ISO 8302)	0.1002 m². K/W
VOC Tested: (ASTM D5116)	TVOC Emission Rates within limits (GBCSA / GBCA /CRI)
Dimensional Stability:	Shrinkage & Expansion ≤ 0.2% in both directions
Staircase Suitability: (EN 1963)/ (NF EN ISO 12951)	Intensive Use
Warranty:	10 year
Guarantee:	5 year

\* Weighted average.



Please note: Berber Point 920 is no longer available in shape formats; the design shown on the image is for inspiration only.



B.



Beyond



Founder



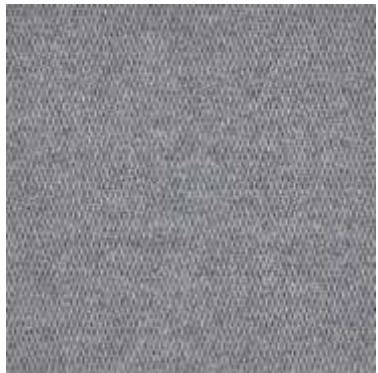
Polish



Redefine



Resilience



Scalable



Tactic

# Berber Point 920



## Bill of Quantities

- Belgotex BERBER POINT 920 4.2m wide Heavy Commercial ± 7.5mm NexBac is manufactured from Stainproof Miracle Fibre (Polypropylene).
- This product is to be laid in accordance with SANS 10186 fitting code of practice.
- Belgotex recommends the use of carpet protector mats where castor wheels are used.
- 10-year warranty and 5-year guarantee.
- Made in South Africa.

**Note:** Belgotex offers customization of this product in colour. Please contact a Belgotex representative for more information.

\*All product names and logos are trademarks of BELGOTEX FLOORCOVERINGS® (Pty) Ltd. © BELGOTEX FLOORCOVERINGS® (Pty) Ltd. All rights reserved. Warranty and guarantee to limitations and conditions. For details contact BELGOTEX FLOORCOVERINGS® (Pty) Ltd.

\*\*BERBER POINT 920 is also available in MTO Shapes (ResinBac only), 25x100cm and 100x100cm tiles (NexBac only). As these are custom offerings, please contact your nearest Belgotex representative for more information on this.

**Needle Punch Broadloom disclaimer:** Product characteristics may vary due to the nature of manufacturing. To combat colour variance do not install more than one dye lot in a single installation. Sample swatches have been cut from an overall design; therefore, the decoration and shades may vary. A difference in appearance from the pattern is likely, as they product is not intended to have a uniform appearance.