

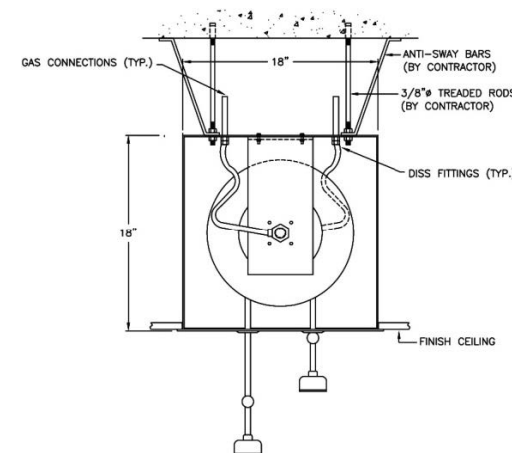


750 Garcia Ave, Pittsburg
CA 94565
+1.925.427.7800
HSIheadwalls.com

Medical Gas Hose Reel Overhead Reel

The Hose Reels are designed for use where overhead connection and concealed retracting of the hose is desired. Designed for use with non-flammable medical gas and vacuum systems.

Description	Part Number
Single Gas	298074
Dual Gas	298075
Reel Only	290351



Features/Specifications:

- Connected to supply pipelines with DISS fittings
- 12 ft pressure hose on each reel, 1/4" I.D. and 5/6" I.D. for Vacuum services.
- The backbox is constructed of 14ga. steel with a baked enamel finish.
- 18" W x 18" D x 14.5" H
- Double reel is 95 lbs., single is 68 lbs.

Options:

- Each Hose Reel Assembly can accommodate one or two Med Gas Services
- Available for any non-flammable medical gas service