



BOA



- Submersible to 22.5 m above deck
- Heavy cargo up to 57.500 t
- Voluminous cargo up to 11.750 m³
- Extreme deck strength of 35 t/m²
- ICE-C class
- Hybrid power system

BOA BARGE 39/40

Semi Submersible Heavy Lift and
Launching Cargo Barge



BOA BARGE 39/40

General Information

| | |
|-----------------|--|
| Vessel's Name | BOA BARGE 39 |
| Flag | Norwegian, NOR |
| Class Society | DnV |
| Class Notations | +1A, Barge for deck cargo DAT (-10°C) ICE C |
| Year built | 2026 |
| Builder | PRC |
| Place built | PRC |
| Owner | Boa Barges AS |
| Manager | Boa Management AS |

Dimensions

| | |
|--|--------------------------|
| Length, Overall | 166 m |
| Breadth, Moulded | 73.38 m |
| Depth, Moulded | 9.15 m |
| Draught load line (transit) approx. | 6.53 m |
| Design draught (submerged) | 31.65 m for, 31.65 m aft |
| Air Draught (from keel to top of mast) | 39 m |
| Web Frame Spacing | 2 m |
| Long. Stiffener Spacing | 0.61 m |
| Gross Tonnage | 33.585 t |
| Net Tonnage | 10.075 t |

Cargo Capacities

| | |
|-------------------------|-----------------------|
| Deadweight (T = 6.53 m) | 57.500 t |
| Deck space | 11.750 m ² |
| Deck strength | 35 t/m ² |
| Launching Capacity | up to 10.000 t jacket |

Submerging Depth

| | |
|---|-----------------------------|
| Submerging | 22.5 m above deck |
| Floating towers (4 off) for free floating submerging operations (Removable) | LxBxH: 10 m x 5.49 m x 25 m |

Tank Capacities

| | |
|-----------------|-----------------------|
| Ballast tanks | 99.274 m ³ |
| Bilge tanks | 33 m ³ |
| Sewage | 2 x 21 m ³ |
| Fresh water | 2 x 22 m ³ |
| Fuel (MDO) | 46 m ³ |
| Lub. Oil Store | 0.6 m ³ |
| Hydr. Oil Store | 1.2 m ³ |
| Misc. Oil Store | 0.6 m ³ |

Ballast System

| | |
|--|--------------------------------|
| Main Ballast Pumps (Electric Driven) | 4 x 5250 m ³ /hr |
| Aft Ballast Pumps (Electric Driven) | 2 x 750 m ³ /hr |
| Service Pump (Electric Driven) | 1 x 400 m ³ /hr |
| Ballast Tanks | 28 in pontoon, 2 in deck-house |
| Remote operated pumps, valves and sounding system from control -and engine room. | |
| Ejector stripping system for all ballast tanks | |

Power Supply

| | |
|---|--|
| Main Generators | 3 x 590 kVA, 440 V, 60 Hz 1 x 129 kVA, 440 V, 60 Hz |
| Work Generator | 1 x 60 kVA, 440 V, 60 Hz |
| Shore Power Connections | 230 V and 400-440 V |
| Deck Distribution for clients equipment | 230 V and 440 V, 60Hz |
| Lights powered by solar panels | |

Anchor & Mooring Equipment

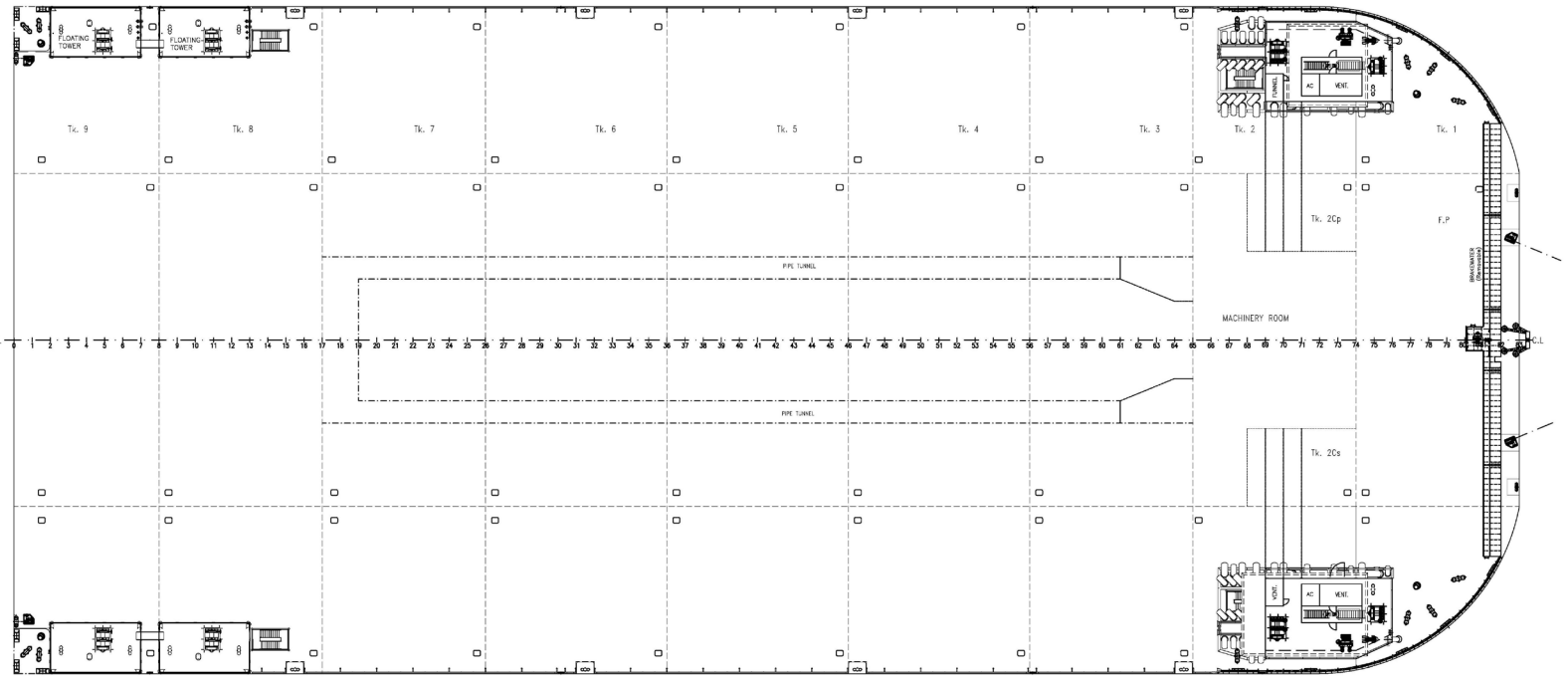
| | |
|---|--|
| Anchor Winches | 2 x hydraulic winches |
| Anchors | 2 x SPEK 8300 kg, 2 x 330 m x 70 mm K3 |
| Capstans | 4 x 15 t pull |
| Work Winches | 2 x single drum +2 x double drum on winch deck |
| Rope Capacities | 220 m x 40 mm 150 m x 60 mm |
| Electrical winches on top of floating towers Rope capacities of 220 m x 40mm/150 m x 60 mm | |
| Bollards | Capacity SWL 150-200 t |

Towing Equipment

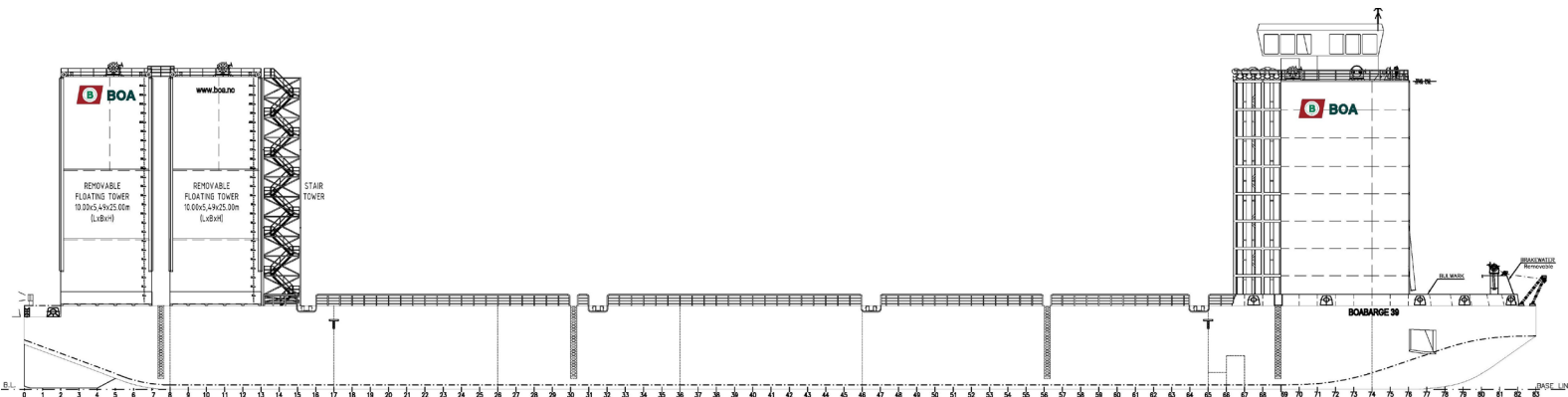
| | |
|--------------------|--|
| Towing Bridle | Each legs 27.5 m, tow plate and 12 m long fore runner |
| Bridle Chain | K3, MBL 5780 KN, Max. Bollard Pull 275 t |
| Recovery System | Recovery winch and A-frame with chain on forecastle deck |
| Towing Brackets | 2 forward 750 t MBL |
| Towing Connections | 2 aft 750 t MBL |

Accommodation

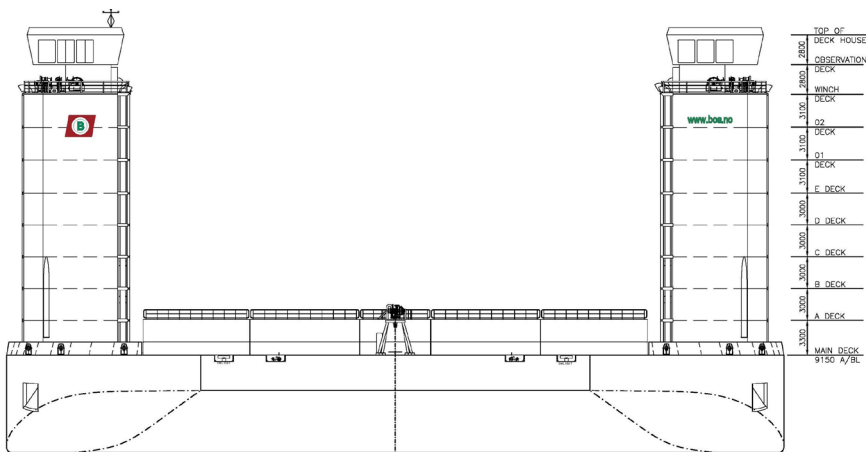
| | |
|----------------|------------------|
| Accommodations | 32 beds |
| Cabins | 16 |
| Day Room | 1 |
| Meeting Room | 1 for 12 persons |



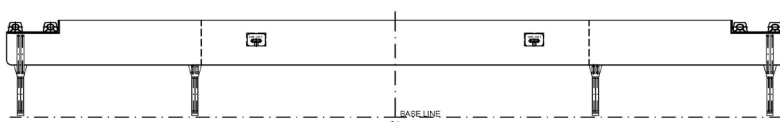
DECK PLAN VIEW



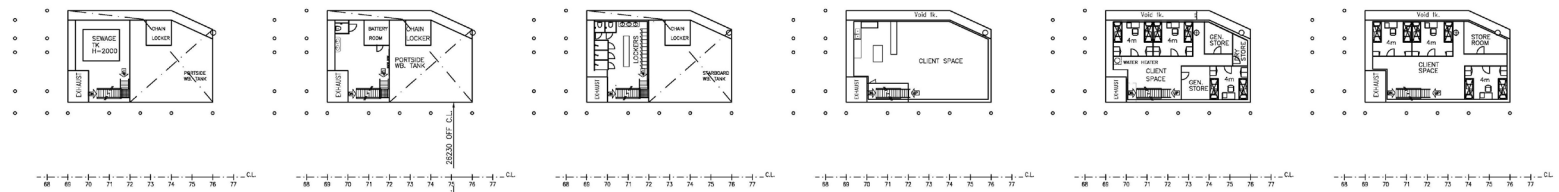
SIDE VIEW



BOW VIEW



STERN VIEW



A DECK

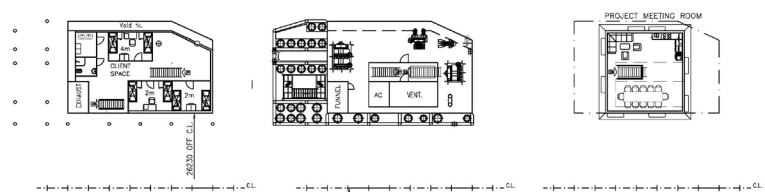
B DECK

C DECK

D DECK

E DECK

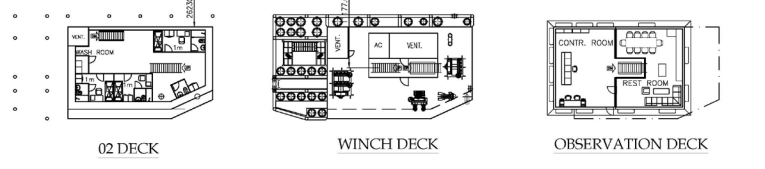
01 DECK

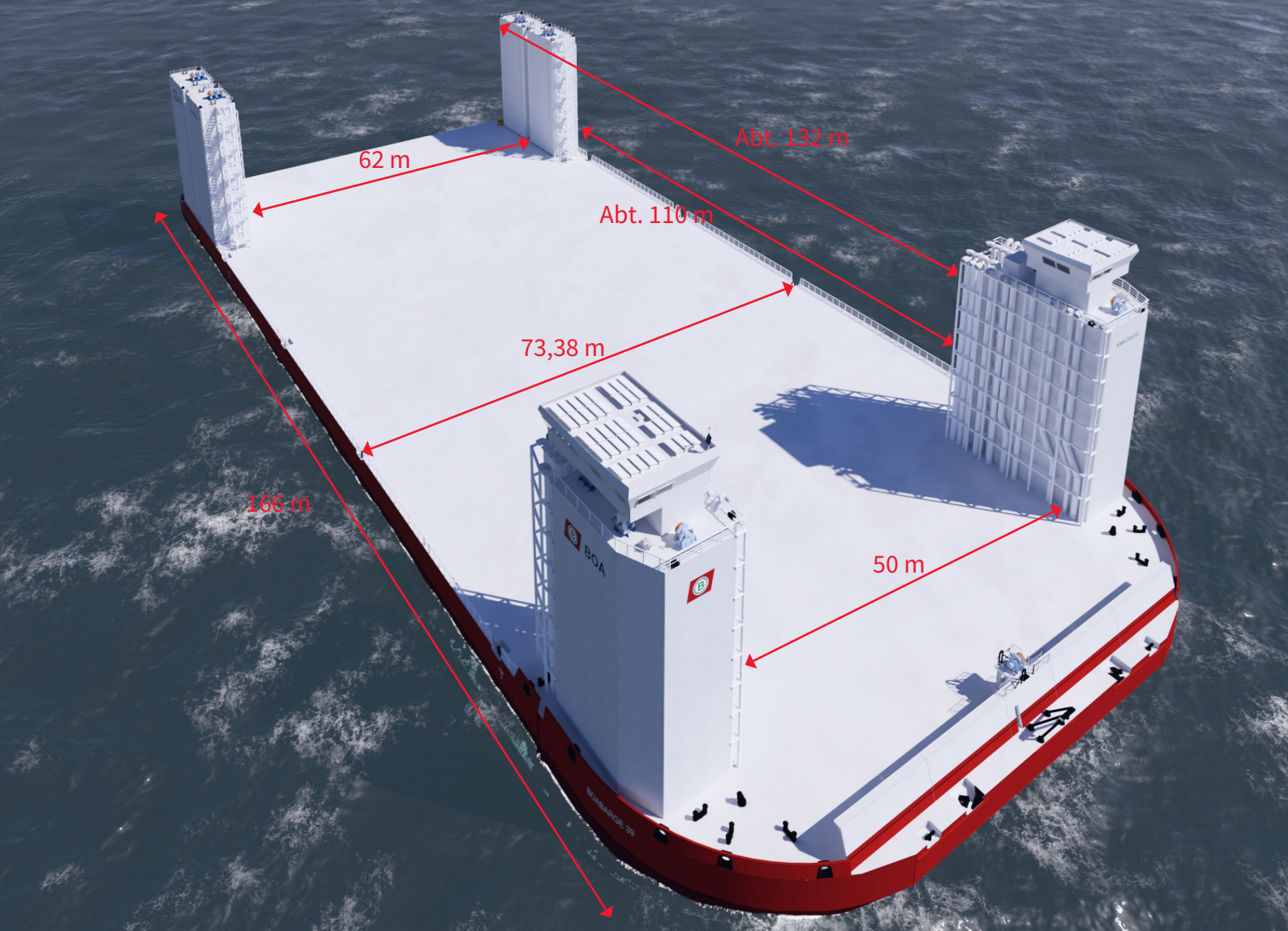


02 DECK

WINCH DECK

OBSERVATION DECK







CORPORATE HEADQUARTERS

BOA Management AS
Strandveien 43
7067 Trondheim
Norway
+47 73 99 11 99
chartering@boa.no

www.boa.no

Every effort has been made to ensure that all information contained in this brochure is accurate and up-to-date, however all specifications are subject to change without notice and should be verified. Boa accepts no liability or responsibility for any action taken based on the information presented in this brochure. Boa encourages interested parties to verify the contents of this brochure when in doubt.