



Kaiserswerth, Düsseldorf Germany

In the Footsteps of Florence: A Nightingale Nursing History Tour of Germany

3 – 6 May 2026



**JON BAINES
TOURS**

Level 3
MODERATE





Water canal in Düsseldorf city

Florence Nightingale believed that nursing was an art, and this tour offers a great opportunity to explore Kaiserswerth, the quaint northern neighbourhood where she honed her craft and which remained important to her throughout her career. Spend a day touring the Kaiserswerth Diakonie site. Stay in the historic Mutterhaus Hotel, previously the Kaiserswerth Sisterhood and Deaconess Institution, where Florence received medical training from the institute's founder, Pastor Theodor Fliednerat.

There will be time at leisure to wander Düsseldorf's oldest district. Nestled along the banks of the Rhine, its defining feature is the colourful baroque houses that line the cobbled streets. Take a panoramic cruise along the river into the city centre, a vibrant contrast to

peaceful Kaiserswerth, and enjoy a walking tour of the compact old town and a local Bierhaus.

This tour precedes *In the Footsteps of Florence: A Nightingale Nursing History Tour to Florence* (8–13 May 2026). Enhance your experience by combining both tours – we'll arrange train travel from Düsseldorf to Florence, including a two-night stop in Basel along the way.

THIS TOUR IS CLASSED AS:

Level 3 | Moderate



Regular walking at destinations, extended standing and/or increased travel distances. Good fitness is required.

3 nights Kaiserswerth



Day 1: Kaiserswerth (Sun, 3 May) **D**

Am: Arrive in Düsseldorf and transfer to Hotel Mutterhaus. Explore Kaiserswerth, a charming, affluent, district to the north of the city centre.

Eve: Hear an overview of the tour from the tour leader before a welcome dinner at Tonhalle Kaiserswerth, a relaxed and traditional restaurant in the heart of the neighbourhood.

Day 2: Kaiserswerth (Mon, 4 May) **B**

Am: Take a guided tour of the Kaiserswerth Diakonie site and learn about the past and present of this historic organisation, which was established in 1836 as the world's first deaconess motherhouse by Theodor and Friederike Fliedner. See the house where Florence Nightingale lived and the places where Theodor Fliedner worked. Visit the motherhouse, the cemetery and a museum that exhibits a local and more general history of nursing in the 19th and 20th centuries.

Pm: Visit the Florence Nightingale Hospital to meet with specialists and learn about its leading role in nursing care.

Eve: At leisure.

Day 3: Kaiserswerth / Düsseldorf **B D**

(Tue, 5 May)

Am: From Kaiserswerth, take a panoramic mini cruise into Düsseldorf. Disembark and enjoy a guided walking tour of the Altstadt and discover the many highlights of this compact centre including the Schlossturm (palace tower), the Rathaus (townhall) and the Jan-Wellem Reiterdenkmal (equestrian monument).

Pm: At leisure to have lunch in the local market and then time to explore at your own pace. Take in one of the city's many museums or do some shopping in the Königsallee, the main shopping boulevard in Düsseldorf.

Eve: Farewell dinner in a traditional brewery in the old town.

Day 4: Kaiserswerth (Wed, 6 May) **B**

Am: Transfer to the airport or travel to Florence via train to connect with *In the Footsteps of Florence: A Nightingale Nursing History Tour of Florence*.

All itineraries are subject to change according to the local conditions.

An old building with wooden windows and shutters





Hotel Mutterhaus, Kaiserswerther

Hotel

Mutterhaus Hotel (Kaiserswerth)

This historic hotel was previously the Kaiserswerth Sisterhood and Deaconess Institution, where Florence Nightingale trained. Between 2000 and 2002 the old motherhouse was converted into a hotel, today's Hotel Mutterhaus Düsseldorf. Ideally located on the institute's beautiful leafy grounds, rooms are spacious, bright and comfortable, and breakfast is buffet style.



River and Minster view, Basel

Post Tour Extension to Basel

The tour can be combined with *In the Footsteps of Florence: A Nightingale Nursing History Tour to Florence* (8–13 May 2026).

Follow the Rhine south on a scenic train journey and connect two historic cities that shaped the early life of Florence Nightingale. Depart Düsseldorf by train on 6 May and

spend 2 nights in Basel, explore its wealth of iconic buildings, galleries and museums. Arrive in Florence late afternoon on 8 May for the start of the tour.

The package includes train travel and 2 nights at the historic and centrally located Hotel Rochat in Basel.

Tour leader



Maddie Blackburn was awarded an OBE in the Kings New Year's Honours list 2025 for her services to people with life-shortening conditions. She is retired but remains academically and professionally active.

Maddie originally trained as a Nightingale Nurse and was previously a trustee for the former Nightingale Fellowship. She is a retired solicitor, senior health professional, clinician and academic. Over the decades, she has developed considerable experience in children's and young people's policy and legislation across health, social care, criminal justice, legal, regulatory and the charity sector. Her academic research and policy interests include the sexuality of young people with life-limiting and/ or life-threatening conditions.

Maddie was the founding Chair of the Open University Sexuality Alliance and has recently co-edited and authored a book for Routledge, Taylor & Francis: *Sex, Intimacy and Living with Life-Shortening Conditions* (2024).

Along with husband Paul Dennison, Maddie assisted Jon Baines Tours with a visit to Florence and Villa Colombaia in 2022.

The cost of the tour is €934 per person sharing a twin room

There is the option to upgrade from a twin to double room from €72 per room.

The cost of the tour with a room to yourself is €1,158

The cost includes:

- 3 nights' accommodation in a twin room in a medium-grade hotel
- The services of tour leader, Maddie Blackburn
- Breakfast daily and dinner as mentioned
- All internal transport
- A full programme of cultural visits with specialist guides as per the itinerary
- All admission fees, tips and taxes

The cost excludes:

- International flights and airport transfers
- Meals not mentioned
- Drinks with meals
- All optional excursions, tours and visits; all personal extras such as portage, laundry and inoculation fees; travel insurance and visas

Post tour extension to Basel:

Extension cost is €494 per person sharing

Extension cost with a room to yourself is €550



Florence Nightingale statue

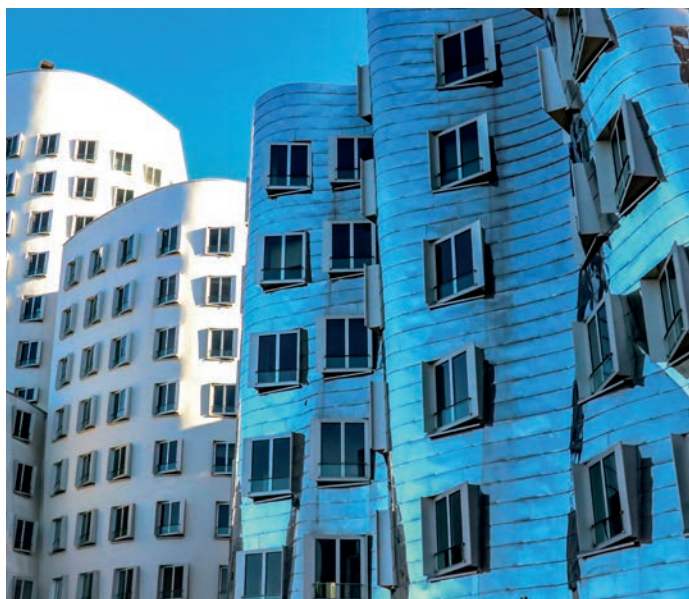
About Us

To travel with us is to dig below the surface, revealing the deeper destination. Of course, you will visit the great historical sites; marvel at the wonders of architecture and engineering; be moved by the riches of culture and art; and experience the most spectacular landscapes in the world. What we also do is make sure that you see the country as it is today, giving you privileged access that independent travel and other tour companies rarely get close to. We give you a variety of experiences, from the sublime to the humble, in the company of intelligent, curious, like-minded people. And while we can be worthy, we also make sure that you have a lot of fun.

All the flights and flight-inclusive holidays in this brochure are financially protected by the ATOL scheme. When you pay you will be supplied with an ATOL Certificate. Please ask for it and check to ensure that everything you booked (flights, hotels and other services) is listed on it. Please see our booking conditions for further information or for more information about financial protection and the ATOL Certificate go to:
www.atol.org.uk/ATOLCertificate

Jon Baines Tours (London)
Hyde Park House, 5 Manfred Road,
London, SW15 2RS
Tel: +44 (0) 207 223 9485 / 5618
Email: info@jonbainestours.co.uk
www.jonbainestours.co.uk

Jon Baines Tours (Melbourne)
PO Box 68, South Brunswick,
Victoria 3055
Tel: +61 (0) 3 9343 6367
Fax: +61 (0) 3 9012 4228
Email: info@jonbainestours.com.au
www.jonbainestours.com



Ruins of the Kaiserpfalz, Kaiserswerth (top);
Frank Gehry, Düsseldorf; Banks of the Rhine (above)



**JON BAINES
TOURS**

