

Lakehall

AT



NENA'S

Sanctuary







Lakehall

at Nena's Sanctuary

The first phase in the development of Nena's Sanctuary is Lakehall. It is an event space that combines breathtaking lakeside, golf course, and garden views with modern, contemporary, and world-class amenities and luxuries. Located within the grounds of Sta. Elena Golf and Country Estate in Sta. Rosa Laguna, it features multiple and beautiful indoor and outdoor spaces, that work for all kinds of experiences and events.

Combining seemingly disparate and contrasting elements, such as – nature and modernity, destination and proximity, serendipity and careful attention to detail, it offers an inimitable, unified, and inspiring backdrop for your imagined activities, events, and special life celebrations.



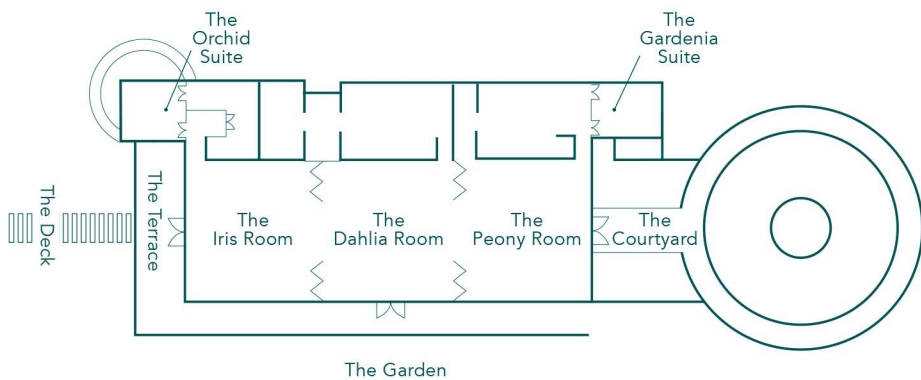


Beyond Four Walls Lakehall

It was envisioned to be a space that breaks free from the four walls. These four walls could be constraints in mobility, the four walls of confined, indoor spaces, the four walls of the city, or the four walls that limit one's potential or creativity.









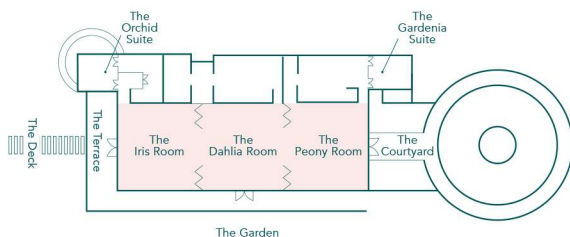
THE *Courtyard*

The Courtyard serves as the perfect drop-off point for guests. The entrance walkway is surrounded by carefully arranged potted plants and foliage, with wooded-floor patios on each side – offering a private, secluded spot to mingle and enjoy cocktails before the main event. This indoor-outdoor foyer can be used as a transition space for bigger weddings or parties, or on its own for more intimate gatherings.



THE *Banquet Hall*

The Banquet Hall captures the beauty of its natural surroundings with its contemporary yet warm design, featuring a wood-clad ceiling, concrete botanical walls, and modern drop lights. Glass sliding doors reveal gorgeous views of the lake and gardens. The entire space can hold up to 360 guests and can also be divided into three rooms for smaller events: The Peony Room, The Dahlia Room, and The Iris Room. Each space is equipped with its own service kitchen and set of restrooms.





The Peony Room



The Dahlia Room

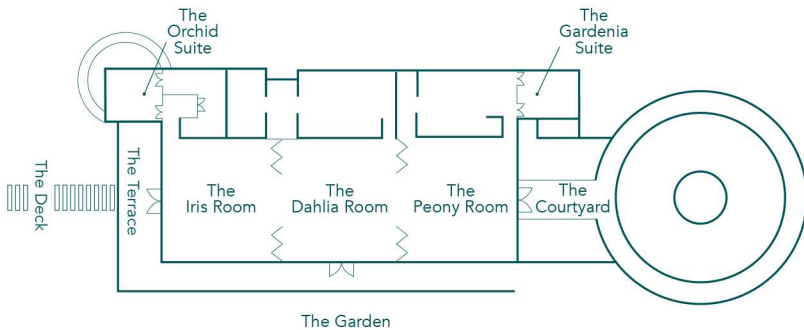
THE SEPARATE ROOMS

The Peony Room is the first space that guests walk into upon entering The Banquet Hall. It can fit up to 120 guests, has its own service kitchen and restrooms, and has access points from The Courtyard and The Garden. It also houses The Gardenia Suite, one of two private accommodations which can be booked for overnight stays.

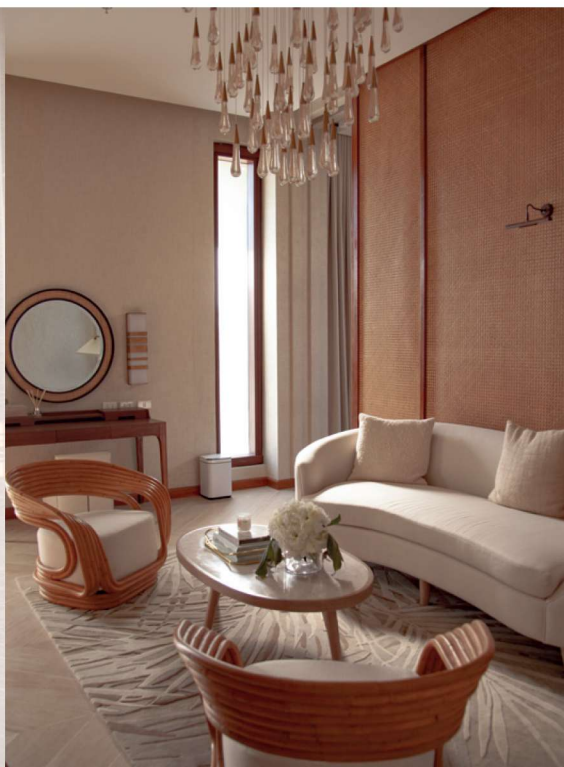
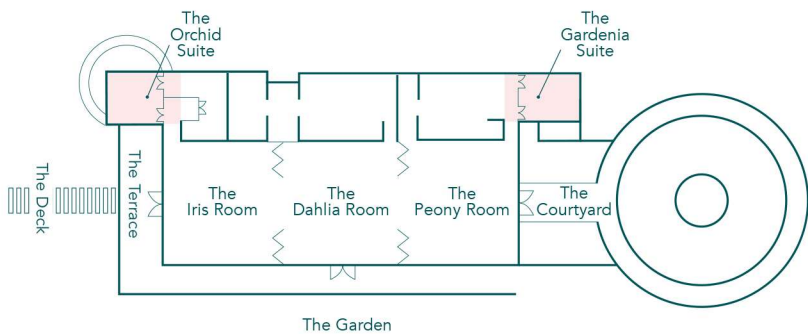
The Dahlia Room is the central room of The Banquet Hall. It can fit up to 120 guests, has its own service kitchen and restrooms, and is adjacent to the gardens, where hosts can stage a lovely outdoor cocktail set-up.

The Iris Room occupies the corner-most area of The Banquet Hall, facing out onto The Terrace and The Deck.

It can fit up to 120 guests, has its own service kitchen and restrooms, and access points from The Garden and The Terrace. The Iris Room also houses The Orchid Suite, one of two private accommodations which can be booked for overnight stays. With views overlooking the lake, it is The Banquet Hall's most premium room.



The Iris Room



THE SUITES

The Orchid Suite is a luxurious private room with its own bedroom, lounge, bathroom, walk-in closet, and private gardens. Facing the lake and golf course, it makes the most beautiful spot to wake up to the sunrise and morning sounds of birdsong. The suite can be booked for overnight stays, which come with a free breakfast.

One of The Banquet Hall's luxurious getting-ready rooms, **The Gardenia Suite** is nestled in its own secluded area for maximum comfort and privacy. It has a bedroom with a queen-sized bed, lounge, bathroom, walk-in closet, and private gardens. Located near The Lakehall's entrance, brides can conveniently enter the suite for touch-ups or dress changes without being seen by their guests. The suite can be booked for overnight stays, which come with a free breakfast.



The Deck



The Terrace



THE OUTDOOR SPACES

Located closest to the lake, **The Deck** is an oval-shaped, outdoor theater with tiered seating. It is a place where guests can relax and bask in the outdoors, while enjoying some food and refreshments. It can fit around 300 guests and be used to hold talks, conduct wedding ceremonies, or stage musical performances.

The Terrace is a chic, outdoor lanai where guests can lounge and enjoy drinks while enjoying the lake and garden views. The space can fit 40 seated guests and is perfect for private dinners and intimate gatherings.

Capacity and Packages

Lakehall

2025 RATES

Packages	Inclusions	Weekday	Weekend
The Eden Package	Entire Lakehall	500,000	550,000
Premium Lakeside + Dahlia	The Iris Room, The Dahlia Room, The Orchid Suite, The Terrace, the Amphitheater, and The Deck	475,000	Weekend bookings (Friday–Sunday) are limited to The Eden Package only. All other packages are available from Monday to Thursday.
Premium Lakeside Package	The Iris Room, The Orchid Suite, The Terrace, The Amphitheater, and The Deck	350,000	
Peony with Courtyard + Dahlia	Peony Room, The Dahlia Room, The Gardenia Suite, and The Courtyard	275,000	
Peony with Courtyard	The Peony Room, The Gardenia Suite, and The Courtyard	150,000	
Terrace Package	The Terrace, The Amphitheater and The Deck	175,000	

All prices are subject to 12% VAT. Rates are valid until January 31, 2026 and subject to change without prior notice.

Services	Rates
Video & Photo	5,000

For video and photo shoots at Lakehall, the rate is Php5,000 per hour for all outdoor spaces. However, for indoor spaces, package venue rates will apply.

Photo and video shoots are available exclusively on weekdays.

Prenup shoot bookings can be made up to one month in advance.

All prices are subject to 12% VAT.

Capacity and Packages

Lakehall

Add-On Spaces

Suites	Weekday	Weekend
Day	7,000	7,700
Overnight Use	12,500	13,750

Check-In/Check-Out Times: Guests may check in from 2:00 PM and check out by 11:00 AM. If you require a later departure, late check-out is available for an additional fee, subject to availability.

All prices are subject to 12% VAT.

Additional Area

Area	Rate	
Lakeside Garden	200,000	Rate does not include Tent Set up

All prices are subject to 12% VAT. Rates are valid until January 31, 2026 and subject to change without prior notice.

Venue Inclusions

Lakehall

Venue Usage & Time Allocation

- Use of venue spaces during the event for up to 8 hours (with air conditioning).
- Ingress set for up to 4 hours (without air conditioning).
- Egress for up to 2 hours (without air conditioning).
- Overtime charge: Php15,500/hour in excess of venue rental hours.
- In excess of allotted time: Ingress/Egress Php 3,500/hour.

Facilities & Amenities

- Choice of round or rectangular tables.
- Banquet chairs.
- Catering kitchen.
- Outdoor seating.
- Separate air-conditioned restrooms for each venue.
- Restroom attendants.
- Basic sound system with microphones.
- Electricity – 100 amperes (distributed load).
- Ample outdoor parking.
- Wheelchair accessible.

Additional Services & Charges

- Additional security: Php1,400 per personnel.
- Additional housekeeping: Php1,000 per personnel.

Payment Terms

- Reservation Fee: 50% of the total package to confirm the booking.
- Full Payment: Due 60 days prior to the event.
- Security Deposit: Collected along with the final payment (amount specified in the contract) and refundable 30 days after the event, provided no damages or losses are incurred.

Lakehall

AT



+63 998 964 3181

inquiry@nenasanctuary.com

● www.facebook.com/nenasanctuary/

● nenasanctuary.com