

Autumn 2 Term 2025

# SEND Newsletter



theplacetobe



## A message from Mrs Hart

It has been a wonderful first term as SENDCo and Inclusion Lead at our school. I've really enjoyed getting to know our children and families, and it truly is a privilege to support pupils who need a little extra help with their learning and wellbeing.

Our fantastic Wellbeing Team are coming to the end of their first term of interventions, having supported around 100 children across the school with their social, emotional and mental health needs. Although they are already highly experienced, they continue to grow their skills: Mrs Perkes is currently training to become an ELSA (Emotional Literacy Support Assistant), and the whole team have been taking part in training on EBSA (Emotionally Based School Avoidance).

I also had the opportunity to attend the recent SENDCo Forum, where it was lovely to meet colleagues from other schools and share good practice. I received further training on Annual Reviews and the Engagement Model, which will help strengthen our provision even more.

This term we have also welcomed a range of external professionals into school. Educational Psychologists, Speech and Language Therapists, Physiotherapists, Visual Impairment Advisors, Early Years Advisors, Occupational Therapists, Family Support Workers, Play Therapists and the School Nursing Team have all worked alongside us to support our pupils. We continue to work closely with Mayfield Chestnut, who provide a Behaviour Support Programme that our staff and children benefit from. And we can't forget Molly the Therapy Dog who has been visiting our Year 3/4s. Next term, she hopes to visit our Year 5/6s.

Thank you for your ongoing support – it's been a very positive and productive term, and I'm looking forward to continuing this work in the new year. From myself and the Wellbeing Team, we wish you a very merry Christmas.



Our wonderful Wellbeing Team

## PlayTorbay

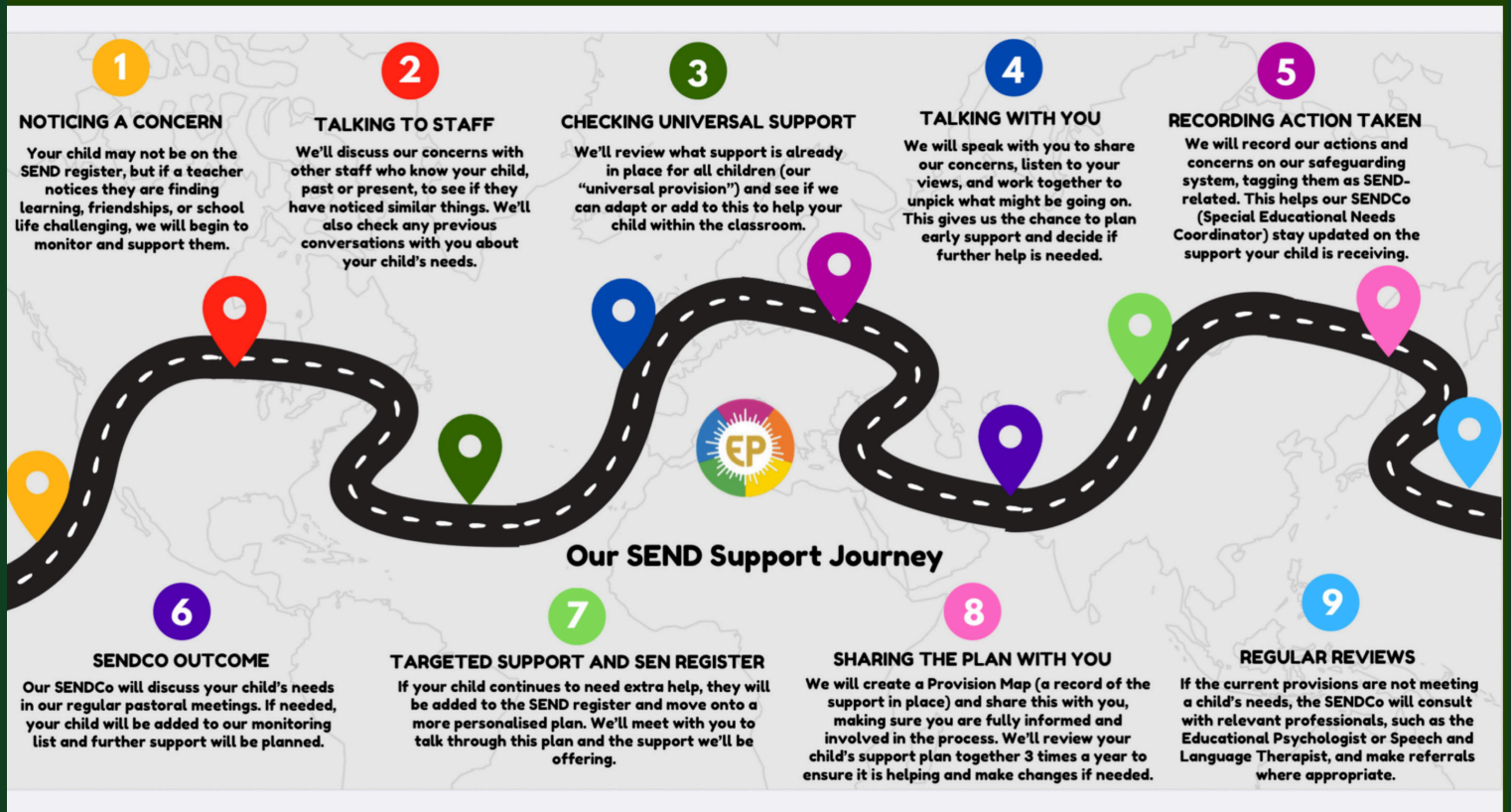


We welcomed Chloe and Sam from Play Torbay to one of our Wellbeing Drop-ins on a Wednesday afternoon from 2pm. Play Torbay is a small charity supporting and encouraging children to play and be active outdoors. They also offer Alternative Provision for children who find mainstream school challenging. They are currently fund raising to reinstate their weekly programme of clubs. Please see their website for more details: [www.playtorbay.org.uk](http://www.playtorbay.org.uk) Next term, we aim to develop our Wellbeing Drop-ins: in January, the Educational Psychologist will be coming to one of our sessions!

Mrs Hart  
Inclusion Lead & SENDCo



# Eden Park's SEND Support Journey



**Torbay Neurodiversity Parent Support Programme is a 6-week workshop series supporting parents and carers of neurodiverse children. Please see their website for more information:**

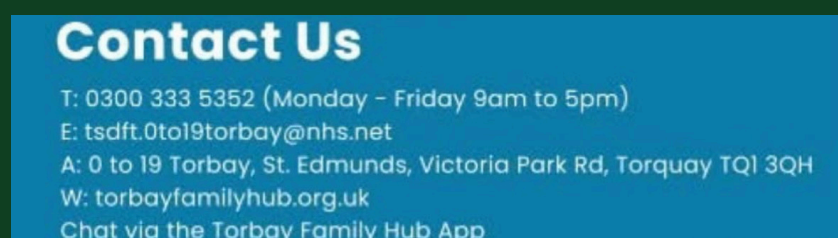
**<https://www.familyvoicetorbay.org/courses-workshops-materials>**



**The Youth Mental Health Foundation are running their Parent2Power programme in January. This is an online event where they offer support and advice. Please book your place here: <https://calendly.com/ymhf/information-session-zoom?month=2026-01>**



**This is wonderful resource that needs a special mention. It's a digital therapeutic app that helps with the symptoms of worries or anxiety for children aged 7-12 years with mild to moderate needs, helping them learn skills to self-manage their worries/anxiety. You can register for a game key here: <https://luminova.app/devon>**





# WELLBEING DROP-IN

Every Wednesday from 2pm

A relaxed, welcoming space for parents to connect, share experiences, and chat with our Wellbeing Team, who are always on hand to offer support and advice.