



SERVICES

MOUNTING & ASSEMBLY, LOGISTICS,
SOURCING & SUPPLY CHAIN MANAGEMENT, QUALITY



/47

MOUNTING & ASSEMBLY

Assembly is usually the last stage in the manufacturing process. Here, components and assemblies are assembled to form finished products or modules.

ASSEMBLY (ESD-PROTECTED, SUB-ASSEMBLIES, COMPLETE MODULES)

In our ESD-protected module assembly, all system-relevant assemblies are assembled by trained specialized staff to customer or standard specification. Tests performed during assembly, a final inspection report as well as serial number tracking are all integral components of overall assembly. If the customer so requires, these can also be performed with UL-monitoring.

FINAL MECHANICAL & ELECTRONIC TESTS

To finalize your product, we offer all necessary mechanical and electronic acceptance inspections.

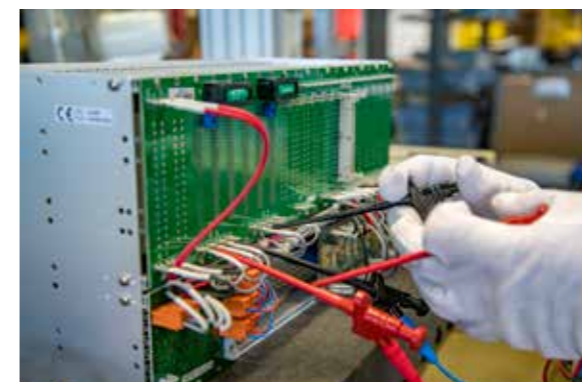
CUSTOMER-SPECIFIC FINAL INSPECTION / QUALITY CONTROL

Before the product is shipped, it undergoes stringent final testing and quality controls as specified in agreement with the customer.

INSTALLATION & SOFTWARE TESTING

Not only standardized but also customer-defined function and final tests are an important part of our manufacturing. To some extent, these are documented fully automatically and can be traced back by means of the product serial number as far as the module level. Software installation and any support that might be needed in the definition of test scenarios also form part of our service. Internal and also external employee seminars, e.g. IPC training, are the basis of the process.

MOUNTING & ASSEMBLY



FINAL ELECTRONIC INSPECTION



CABLE ASSEMBLY



/49

LOGISTICS, SOURCING & SUPPLY CHAIN MANAGEMENT

To ensure that your product reaches its destination on time and undamaged, we arrange for suitable packaging and logistics.

PACKAGING CONCEPTS

We pack your products with due care according to their nature, shape and size and develop suitable packaging concepts that will protect your products against potential damage during transport and further processing.

WORLDWIDE WAREHOUSE ABILITY

Thanks to our locations in Europe, North America and Asia, we can offer our customers warehouse availability all over the world.

LOGISTIC CONCEPTS

Together with our customers we develop individual logistics concepts to ensure that deliveries reach their destination on time and undamaged.

SUPPLY CHAIN MANAGEMENT

Our supply chain management includes not only qualified internal but also global external purchasing and procurement management.

We constantly endeavor to optimize the value chain and to respond quickly to any pending discontinuation of components with the aid of the obsolescence management system and the associated last-time-buy activities.

LOGISTICS, SOURCING & SUPPLY CHAIN MANAGEMENT



FLEET



MODERN PACKAGING TECHNOLOGY

/50

QUALITY

The quality reflects our daily efforts and leads to long-standing results.

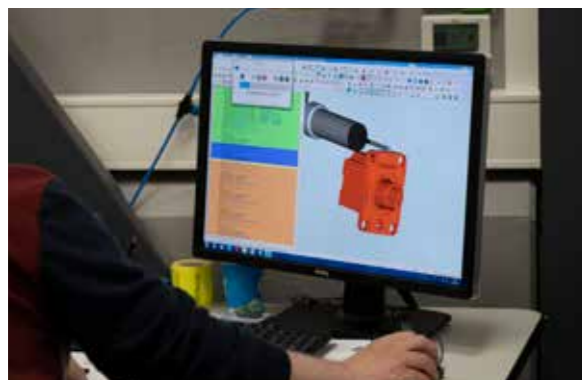
QUALITY AND ENVIRONMENTALLY CONSCIOUS THINKING AND ACTING

are a matter of course for all areas of our company group. We consider this a key prerequisite for successfully facing the constantly growing challenges of the international markets together with our business partners.

In order to ensure maximum quality and to meet the requirements of the markets we serve, we focus on the use of state-of-the-art production facilities and high-precision measurement technology. Advance quality planning and the ongoing certification of our processes supplement these.

MEASURING EQUIPMENT FOR QUALITY ASSURANCE

- 3D coordinate measuring machines (optical and tactile)
- Hygrometer
- Height gage 400
- Height gage 700
- Coordinate measuring machine
- Microscope (x 80)
- Surface measuring gage
- Tension and pressure test equipment



MEASURING LABORATORY

DEVELOPMENT, ADVANCED QUALITY-PLANNING

Quality planning for prototypes, pre-series and series as well as circuit designs in the field of systems technology are made based on the respective customer / project requirements. Here, our customers also have access to the development and construction of product-specific inspection and testing facilities.

Samplings are made according to PPAP, PPF, VDA or customer procedures, according to the respective customer specifications.

TEST & MEASUREMENT SYSTEMS IN THE SYSTEMS TECHNOLOGY AREA

- VDE testing
- Modular backplane tester NT410 for connection, short-circuit and component testing
- Agilent 34980 A multi-functional, automated, programmable test and measurement unit with automatic data capture
- Development and construction of product-specific test and measurement devices



MEASURING LABORATORY





/53

QUALITY

Certified quality in all procedures and processes within the POLYRACK TECH-GROUP

DESIGN

- SolidWorks Composer = Creation of customer-specific installation instructions
- SolidWorksVisualize = Product presentations with photorealistic images or short film presentations

CERTIFICATES

- DIN EN ISO 9001, Quality management system
- DIN EN ISO 3834 , welded sheet and profile housings, cabinets
- IATF 16949, Quality management system in the automotive industry

ROHS

POLYRACK TECH-GROUP products comply with the requirements of European Directive **2011 / 65 / EU** (RoHS) supplemented with European Directive **2015 / 863**, unless we have been given instructions to the contrary.

REACH

Products of the POLYRACK TECH-GROUP comply as of today's status of knowledge to the requirements of REACH regulation **EG 1907/ 2006**.

WEEE

POLYRACK TECH-GROUP is not a manufacturer in accordance with the European Directive **2012 / 19 / EG** (WEEE) and is therefore essentially released from this directive.

QUALITY



QUALITY MANAGEMENT SYSTEM
DIN EN ISO 9001



WELDING QUALITY REQUIREMENT
DIN EN ISO 3834