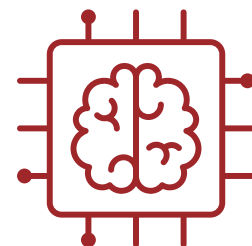


Artificial Intelligence – Benefits and Risks

What is AI?

Artificial Intelligence (AI) can be described as ‘Any computer system that can perform tasks usually requiring human intelligence. This could include visual perception, text generation, speech recognition or translation between languages.’



How can Charities use AI?

Many charities are now introducing AI into their daily operations. Generative AI, such as ChatGPT, Scribe and Gemini, which all generate text quickly from a prompt. This can make it much quicker and easier for charities to draft documents and reports, summarise meetings, develop online content and complete administrative tasks.

Cyber Security and AI

It's extremely important to consider cyber security risks when using AI. As the technology is advancing at such a rapid rate, it can be difficult to regulate.

Here are some important risks to consider:

Misinformation and 'AI hallucination' – incorrect statements presented as facts

Bias – depending on the data the AI has developed from, it can show bias and be gullible when asked leading questions

Prompt Injection Attacks – AI can be coaxed into generating offensive content and revealing confidential information

Data Poisoning Attacks – it can be corrupted by manipulating the data used to train the model



AI Resources

Both NCSC and Charity Digital have a wide range of online resources to help charities consider how to use AI safely.

National Cyber Security Centre – [Artificial Intelligence Guidance](#)

Cyber Digital – charitydigital.org.uk/artificial-intelligence