

PROMOTED
COMPANIES

FORMER GOLDEN CHICK
1160 East US Hwy 377 Granbury, TX 76048



D
Mitch Traub / 214.729.3705 / mitch@promotedcompanies.net
Kendall Ibsen / 214.621.3285 / kendall@promotedcompanies.net

The information contained herein was obtained from sources deemed reliable; however, no guarantees, warranties or representations as to the completeness or accuracy thereof. The presentation of this real estate information is subject to errors; omissions; change of price; prior sale or lease; or withdrawal without notice.

TABLE OF CONTENTS

PG. **3** ABOUT

PG. **4** TRADE AERIAL

PG. **5** SITE PLAN

PG. **6** SURVEY

ABOUT

Available for Sale or Lease

2nd Generation QSR Opportunity with Drive-Thru

Positioned along Highway 377 with traffic counts exceeding 43,000 VPD

Strong visibility and access within Granbury's dominant retail corridor

Limited freestanding drive-thru opportunities in the market

DETAILS

- 2,550 square feet
- Free-standing building with drive-thru
- Outdoor patio seating
- Dedicated monument signage fronting Highway 377

DEMOGRAPHICS

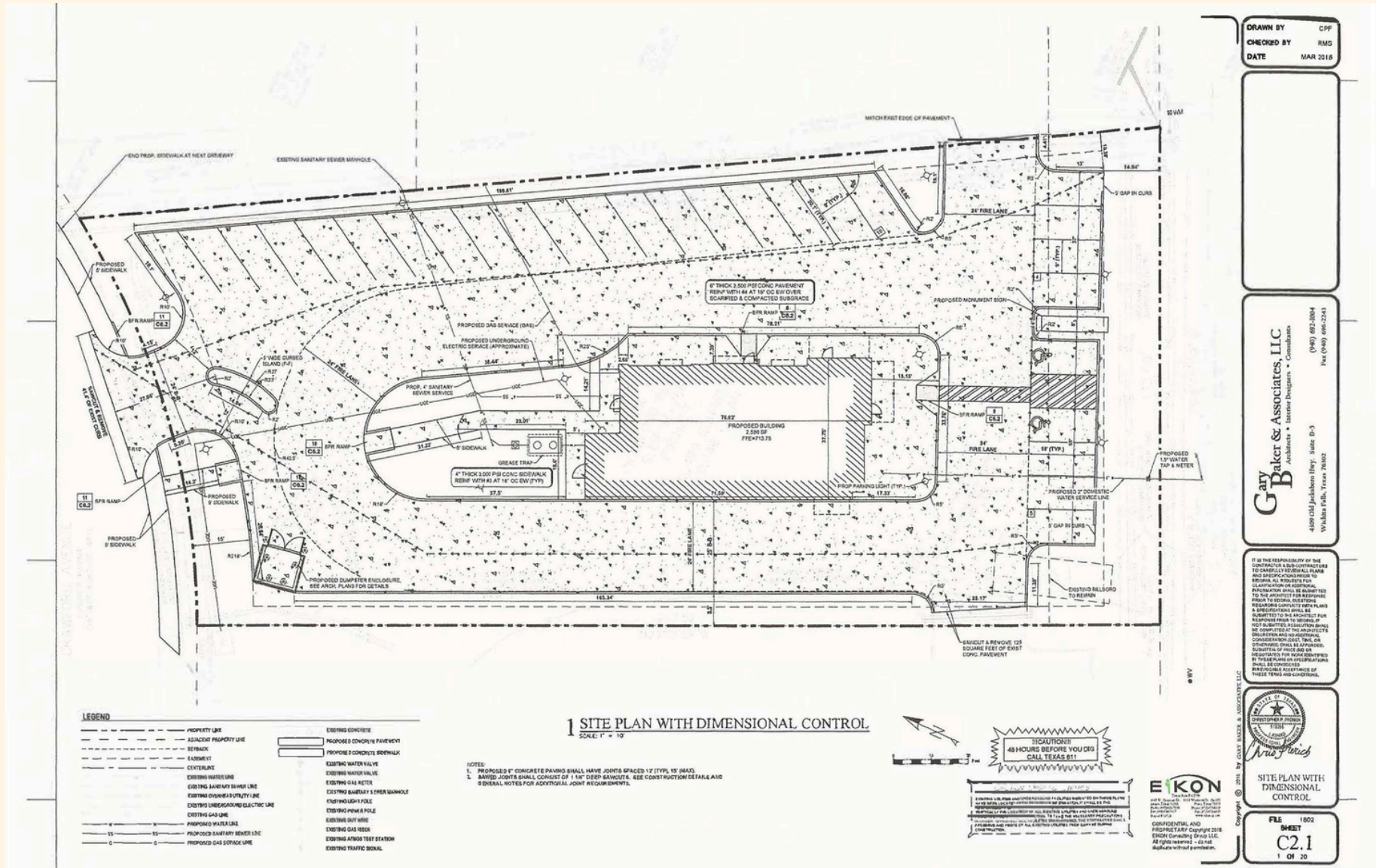
	1 MILE	3 MILE	5 MILE
2025 Population:	4,860	22,061	42,593
2025 Avg. HH Income:	\$100,170	\$107,255	\$114,187
2025 Total Daytime Population:	7,049	28,026	42,646
2025 Avg. Home Value:	\$528,267	\$460,303	\$440,497

AREA RETAILERS





Mitch Traub / 214.729.3705 / mitch@promotedcompanies.net
 Kendall Ibsen / 214.621.3285 / kendall@promotedcompanies.net

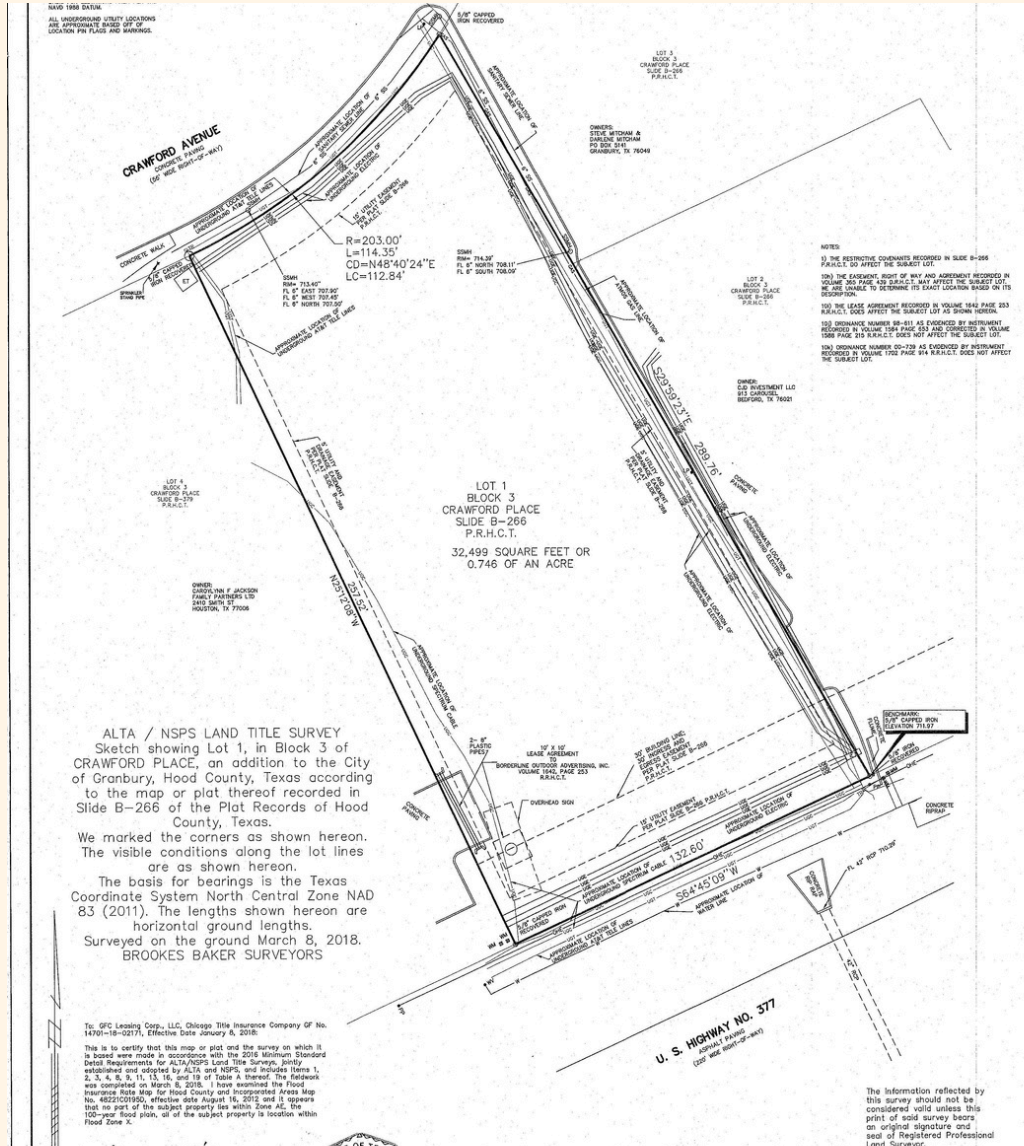


DRAWN BY: CPP
CHECKED BY: RMS
DATE: MAR 2018

Gary Baker & Associates, LLC
Architects • Interior Designers • Consultants
4890 Old Jackboro Hwy, Suite D-3
Wilkes Park, Texas 76002
(940) 692-2804
Fax (940) 692-2243

IT IS THE RESPONSIBILITY OF THE CONTRACTOR TO OBTAIN ALL NECESSARY PERMITS AND APPROVALS PRIOR TO BEGINNING CONSTRUCTION. THE CONTRACTOR SHALL BE RESPONSIBLE FOR OBTAINING ALL NECESSARY PERMITS AND APPROVALS PRIOR TO BEGINNING CONSTRUCTION. THE CONTRACTOR SHALL BE RESPONSIBLE FOR OBTAINING ALL NECESSARY PERMITS AND APPROVALS PRIOR TO BEGINNING CONSTRUCTION.

STATE OF TEXAS
REGISTERED PROFESSIONAL ARCHITECT
No. 111111
Gary Baker & Associates, LLC



Mitch Traub /214.729.3705 / mitch@promotedcompanies.net
 Kendall Ibsen /214.621.3285 / kendall@promotedcompanies.net

PROMOTED

COMPANIES

Mitch Traub

214.729.3705

mitch@promotedcompanies.net

Kendall Ibsen

214.621.3285

kendall@promotedcompanies.net