

## Value of Living **On-Campus**

Within walking distance to classes, library, and other campus facilities



Higher GPA & graduation rate than the campus average



Lifelong friendships and a sense of community



Community Programs and Events



24/7 Residential Life Staff to Help Students

## Follow Us!

Stay up to date on events, campus news, and any important info for Student Housing by following us on Instagram!



@fresnostatehousing



## Contact Us



Fresno State Student Housing  
California State University, Fresno  
5152 N. Barton Avenue M/S RH 82  
Fresno, CA 93740-8013



800.555.0482 | 559.278.2345



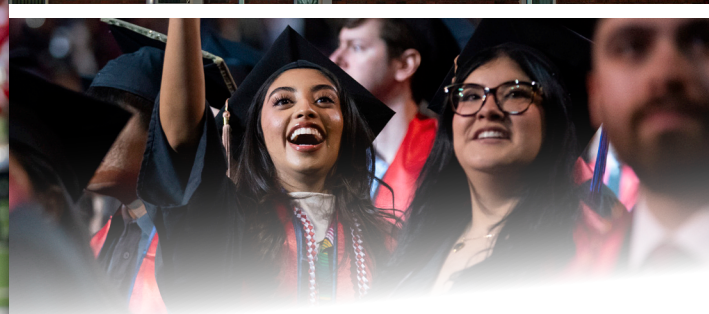
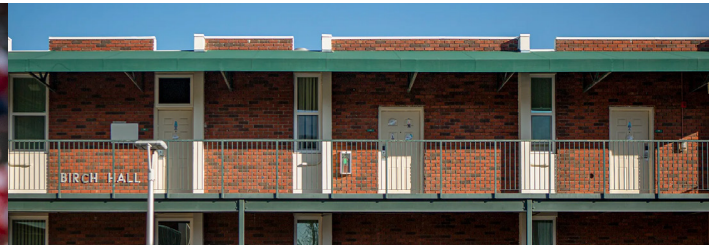
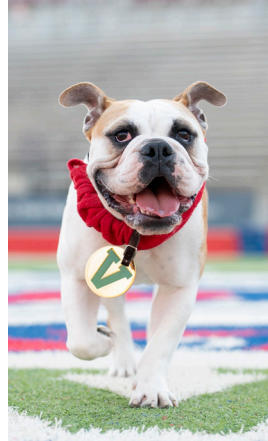
559.278.5020



housing@csufresno.org



fresnostatehousing.org



# College Life **Starts Here**

**FRESNO**  **STATE**

Student Housing

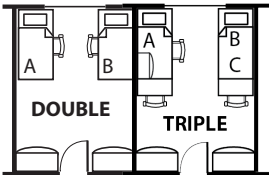
For more information, visit our website at:  
**fresnostatehousing.org**

TM



## Community Style Living

Community style living provides you with the best opportunity to live with fellow students who have similar goals and educational desires. Men and women live in gender designated community style wings. Double and Triple occupancy rooms are located along a shared hallway in a traditional residence hall (limited singles available).



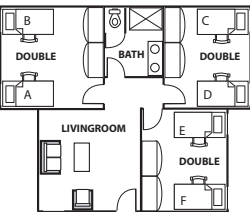
### Community Double and Community Triple

Bed space C is underneath bed space B

**Community Style Halls:** Baker, Graves, Homan

## Suite Style Living

If you are looking for a greater degree of privacy and a living arrangement that includes its own living room, bathroom and hallway, then consider applying to live in the suite style halls. The design of the suite style makes living with a close group of friends possible.



### 3 Bedroom Triple Suite

**Suite Style Halls:** Aspen, Birch, Cedar, Pondersoa, Sequoia, Sycamore

## 2025 - 2026 Rates

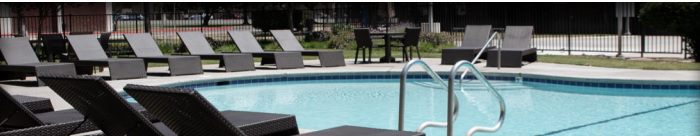
1	Room Type	Academic Year
<b>Communities</b>		
	Community Triple	\$5,239
	Community Double	\$6,175
	Large Community Single	\$8,730
<b>Suites</b>		
	2 Bedroom Suite - Triple	\$5,730
	1 Bedroom Suite - Triple	\$6,279
	3 Bedroom Suite - Double	\$7,044
	2 Bedroom Suite - Double	\$7,351
	1 Bedroom Suite - Double	\$7,821
	Small Single Suite	\$8,528
	Large Single Suite	\$9,464

2	Meal Plan
<b>Gold</b> \$4,805	<b>10 Meals per week</b> in the University Dining Hall <b>\$150 Flex Cash</b> each semester for use at Dining Services locations on-campus
<b>Platinum</b> \$5,181	<b>Unlimtied Meals</b> in the University Dining Hall <b>\$150 Flex Cash</b> each semester for use at Dining Services locations on-campus <b>One free meal per week</b> at The Bucket (On-Campus Restaurant).

1 + 2 = TOTAL COST FOR HOUSING

Rates may vary and are subject to change.

## Features & Amenities



- Wi-Fi and Xfinity streaming services included
- Fully furnished room with bed, desk, and chair
- Recreation rooms with pool tables, ping pong, foosball, and more
- 24/7 Fitness Center, Computer Lab, and Front Desk operations
- \$300 Flex Cash/year to use at campus eateries
- Swimming pool, sand volleyball court, BBQ area
- Key FOB access to get into your building/bedroom
- Microwave, mini fridge with freezer, and personal safe
- On-site laundry facilites
- PG&E and utilities included

## Application Process

1 Fill out your Application

2 Sign the Student Housing Contract via Adobe Sign

3 Pay the \$50 Non-Refundable Application Fee & \$150 initial down payment

There is no deadline, but your completed application should be submitted as soon as possible for your best opportunity to receive housing.