

# Docusnap at a glance



**Docusnap**

info@docusnap.com



# Agenda



## Docusnap

Definition and requirements for professional IT documentation



## Documentation

Output in the form of reports, visualizations and IT concepts



## Licensing and Services

Additional services around Docusnap and license model



## Inventory

Automatic and manual capture of the IT infrastructure



## Analysis

License management, security evaluations and presentation of error chains



# DocuSnap

Software solution for the documentation of IT environments



# IT documentation

The IT documentation includes all hardware and software components as well as their configuration.

Visualizations and evaluations additionally create the necessary transparency about the used IT.



# Reasons for IT documentation

Compliance requirements

Certification

Improvement of operational processes

Optimization of IT projects

Reduction of effort





# A good IT documentation is...

Traceable

Complete

Reusable

Target group oriented

Available

Up to date

Efficient





# Obstacles

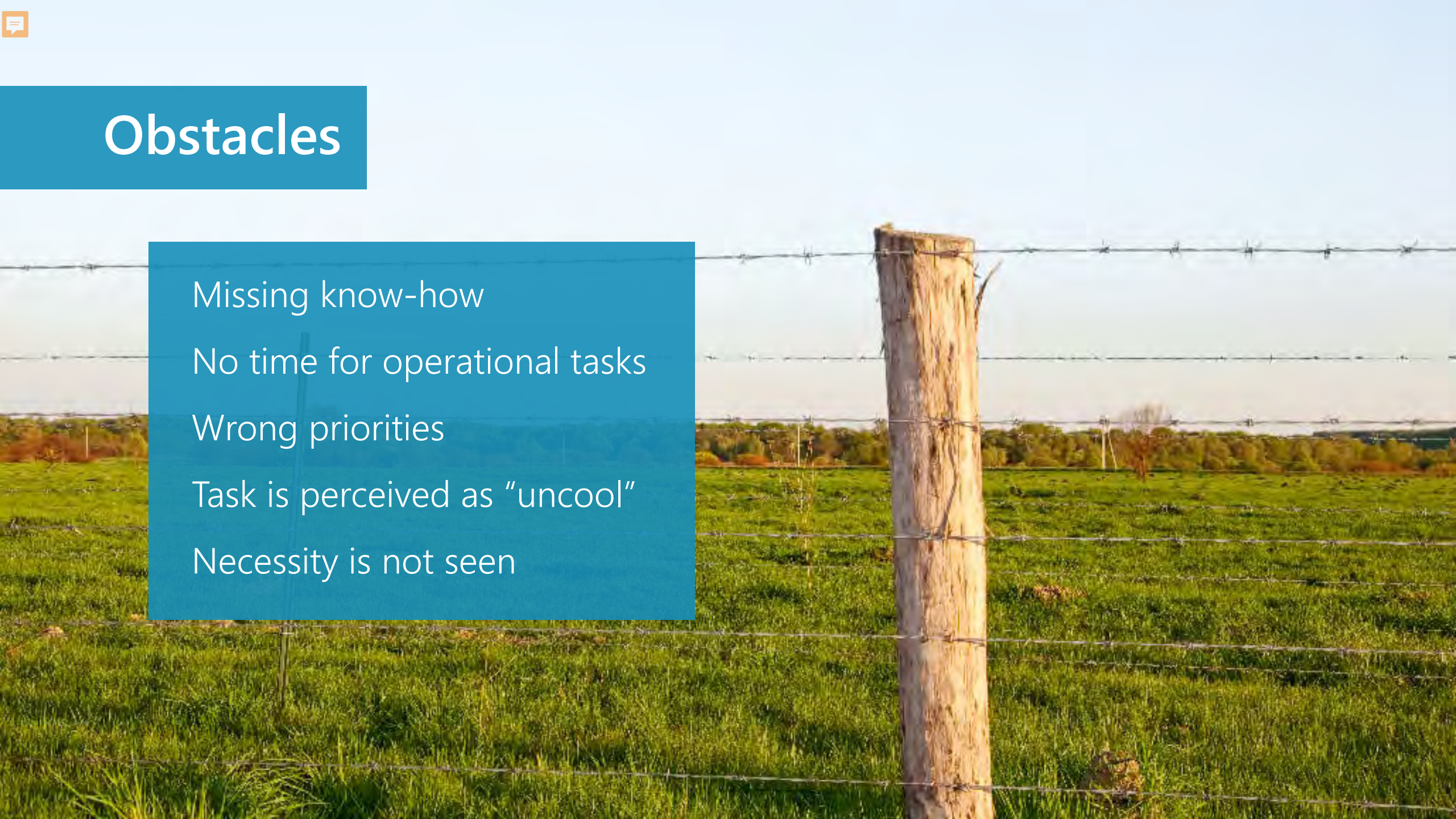
Missing know-how

No time for operational tasks

Wrong priorities

Task is perceived as “uncool”

Necessity is not seen



”

**Our vision is to provide IT professionals with the perfect IT documentation in a simple way.**

Ingemar Mayr, CEO

# The story of Docusnap

On the market since 2004

Market leader DACH

Over 7,000 international customers





# The Docusnap philosophy

Complete inventory

Transparency with the help of visualizations

Automation of standard tasks

Individuality through adaptability

Internationally usable





# Typical applications

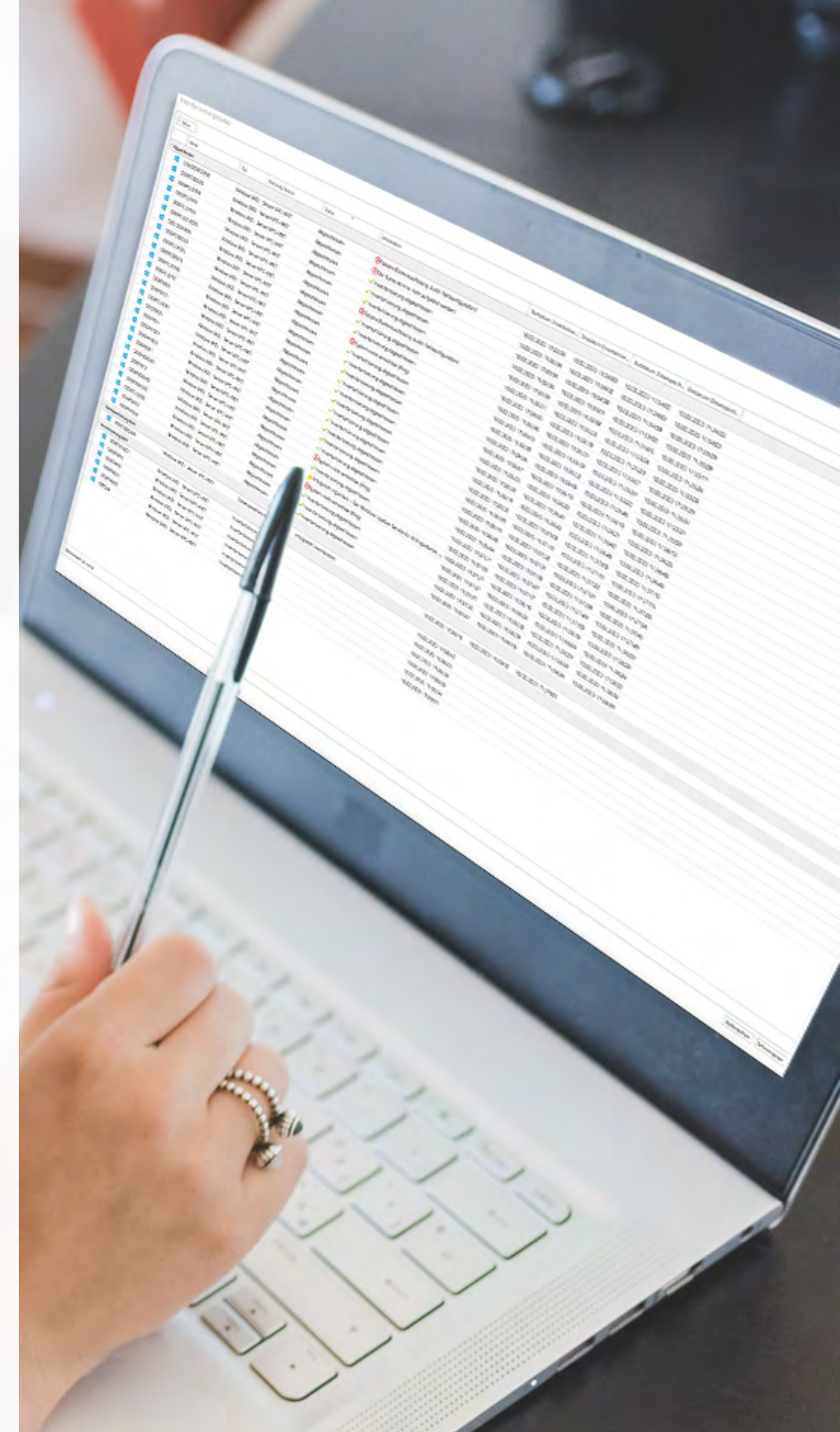
Customer documentation for IT service providers

Basis for audits

Protection of activities

Support assistance

Basis for planning



A man with glasses and a beard, wearing a light blue shirt and a grey blazer, is smiling and looking at a laptop. A woman with long brown hair, wearing a light-colored t-shirt, is also smiling and looking at the laptop. They are sitting at a desk with two laptops. The background is a bright, modern office setting with large windows.

# The 3 phases of Docusnap

I

Inventory

II

Interpret

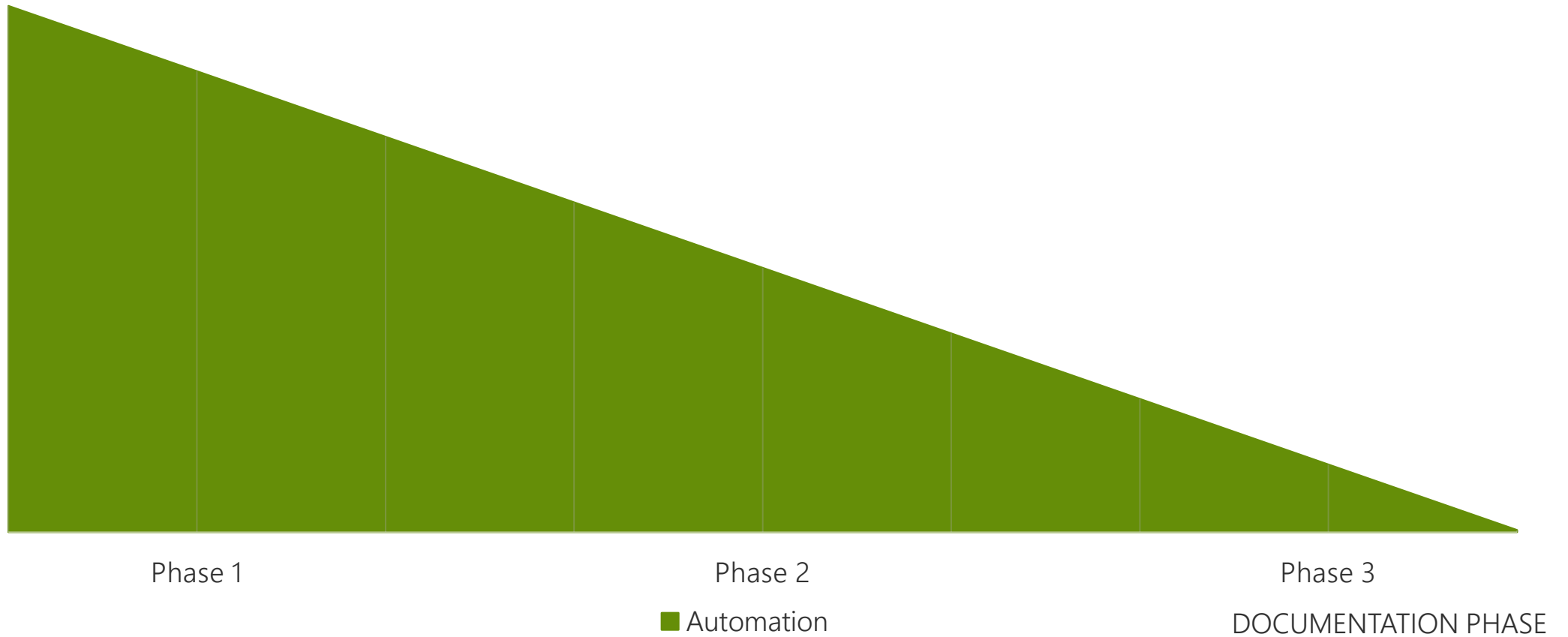
III

Improve



# The degree of automation

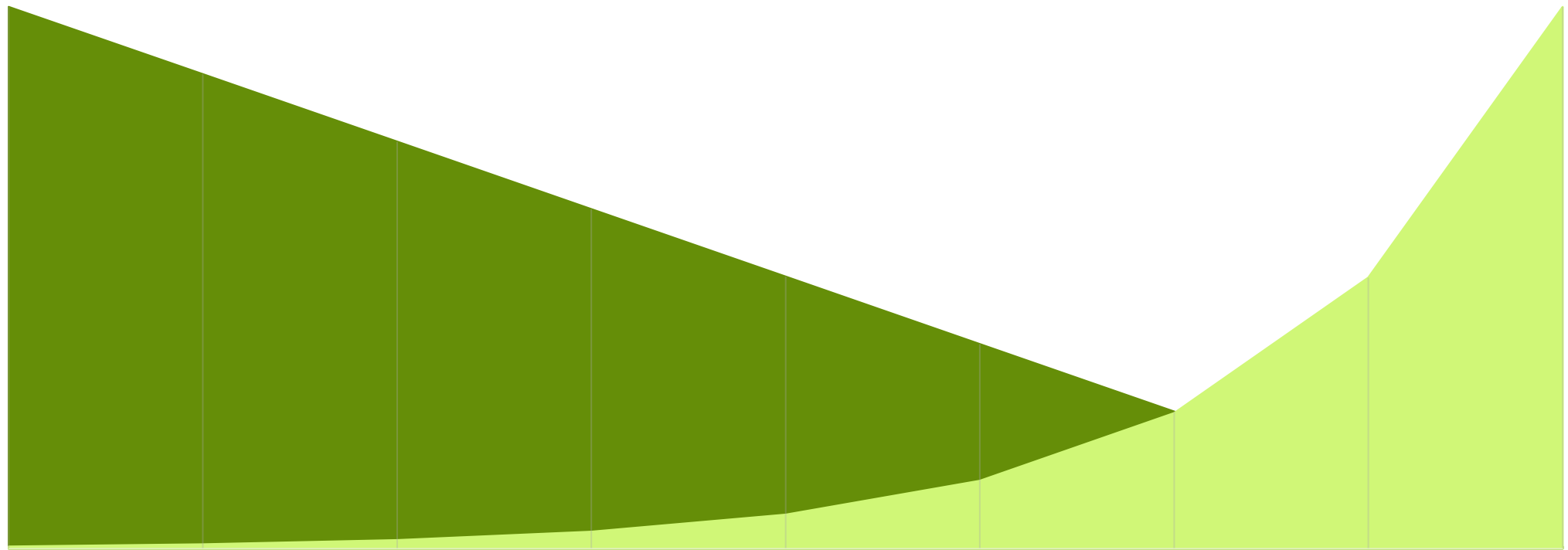
SHARE  
IN %





# The degree of automation

SHARE  
IN %



Phase 1

Phase 2

Phase 3

■ Automation ■ Expert work

DOCUMENTATION PHASE

# Structure of Docusnap

## Inventory

- Network scan
- Manual entry
- Physical infrastructure
- Additional information

## Documentation

- Reporting
- Visualization
- IT concepts
- Export
- Integration into third-party products
- HTML documentation

## Analysis

- Safety and security
- License management
- Business
- Dependencies

# Inventory



Available inventories



Automatic scans



Manual entry



Physical infrastructure



Additional information





# Available inventories



Status					
Name	Type	Discovery Service	Status	Information	Date (Data Storing)
<b>Completed</b>					
DOSPCDC02	Windows (AD)	Server-VPC-MKT	Completed	✓ Inventory comp	10/2023 12:42:28
DOSPCDC01	Windows (AD)	Server-VPC-MKT	Completed	✓ Inventory comp	10/2023 12:42:33
DOSPCDEG03	Windows (AD)	Server-VPC-MKT	Completed	✓ Inventory comp	10/2023 12:42:46
DOSPBK01	Windows (AD)	Server-VPC-MKT	Completed	✓ Inventory comp	10/2023 12:42:49
DOSPCL02N2	Windows (AD)	Server-VPC-MKT	Completed	✓ Inventory comp	10/2023 12:42:57
DEG-DOMAIN	Windows (AD)	Server-VPC-MKT	Completed	✓ Inventory comp	10/2023 12:42:57
DOSPCL01STL	Windows (AD)	Server-VPC-MKT	Completed	✗ System not ava	10/2023 12:43:09
DOSPCL01N1	Windows (AD)	Server-VPC-MKT	Completed	✓ Inventory comp	10/2023 12:43:22
DOSPCL02N1	Windows (AD)	Server-VPC-MKT	Completed	✓ Inventory comp	10/2023 12:43:43
DOSPHYS01	Windows (AD)	Server-VPC-MKT	Completed	✓ Inventory comp	10/2023 12:43:49
DOSPF01	Windows (AD)	Server-VPC-MKT	Completed	✓ Inventory comp	10/2023 12:43:56
DOSPHYS03	Windows (AD)	Server-VPC-MKT	Completed	✓ Inventory comp	10/2023 12:44:03
DOSPHYS02	Windows (AD)	Server-VPC-MKT	Completed	✓ Inventory comp	10/2023 12:44:08
DOSPSDEG01	Windows (AD)	Server-VPC-MKT	Completed	✗ System not ava	10/2023 12:44:17
DOSPSDEG02	Windows (AD)	Server-VPC-MKT	Completed	✗ System not ava	10/2023 12:44:27
DOSPIS12	Windows (AD)	Server-VPC-MKT	Completed	✓ Inventory comp	10/2023 12:44:27
DOSPEX01	Windows (AD)	Server-VPC-MKT	Completed	✓ Inventory comp	10/2023 12:44:43
DOSPSDEG03	Windows (AD)	Server-VPC-MKT	Completed	⚠ Successfully imp	10/2023 12:44:49
DOSPSDEG04	Windows (AD)	Server-VPC-MKT	Completed	✓ Inventory comp	10/2023 12:45:13
DOSPCDEG05	Windows (AD)	Server-VPC-MKT	Completed	✗ Name resolution failed.	02/10/2023 12:45:11
DOSPCDEG06	Windows (AD)	Server-VPC-MKT	Completed	✗ Incorrect name resolution due to misconfiguration!	02/10/2023 12:45:13
CAUDOSPCMV5	Windows (AD)	Server-VPC-MKT	Completed	✗ Incorrect name resolution due to misconfiguration!	02/10/2023 12:45:16
DOSPCL01ST	Windows (AD)	Server-VPC-MKT	Completed	✓ Inventory completed	02/10/2023 12:44:25
DOSPCL01M	Windows (AD)	Server-VPC-MKT	Completed	✓ Inventory completed	02/10/2023 12:44:45
DOSPSP01	Windows (AD)	Server-VPC-MKT	Completed	✓ Inventory completed	02/10/2023 12:44:22
<b>Inventory completed</b>					
DOSPCL01M	Windows (AD)	Server-VPC-MKT	Inventory completed	Scanned successfully	02/10/2023 12:44:35
<b>Inventory in progress</b>					
DOSPHYSE	Windows (AD)	Server-VPC-MKT	Inventory in progress		02/10/2023 12:43:43
DOSPCL01N4	Windows (AD)	Server-VPC-MKT	Inventory in progress		02/10/2023 12:45:16
DOSPDB01	Windows (AD)	Server-VPC-MKT	Inventory in progress		02/10/2023 12:45:27
DOSPCDEG01	Windows (AD)	Server-VPC-MKT	Inventory in progress		02/10/2023 12:45:33
DOSPSP02	Windows (AD)	Server-VPC-MKT	Inventory in progress		02/10/2023 12:45:36

### Inventory

Steps 1-3
4
5
6
7

Additional Tools
Software Search
Summary
Scheduling

Schedule Inventory

Name:

Schedule Type:

Every week on Sunday at 20:00:00. Schedule will be used from 04/06/2020.

Frequency

Interval:

Recurring every:  week(s) on:  Monday  Tuesday  Wednesday  Thursday  Friday  Saturday  Sunday

Frequency per day

Once at:

Every:  Hour(s) between  and

Duration

Start Date:   No End Date  End Date:

Automatic scans

Agentless

Time-controlled

Recurring

Discovery

Inventory

Documentation

IT Security

License Management

All Jobs

Connect

Physical Infrastructure

Management

- Overview
- Docusnap Sports
- Infrastructure
- Cloud Infrastructure
- Assets
  - Users
  - Hardware
  - Groups
  - Systems
  - Software
  - Other Assets
  - Reports
  - Mobiles
    - iPhone
      - Create iPhone
      - Delete...
      - Customize Company Settings...
    - Sar
  - SIM C
  - Tablet
  - Physical
  - System C
  - Sites
  - Organization
  - Connect

Windows (AD) ★

SNMP ★

Active Directory ★

VMware ★

Microsoft 365 ★

Azure Service ★

AWS ★

System Groups ★

All Wizards

+ New

Data (3) Additional Information

Drag a column header here to group by that column

	Model Name	Model Code	Serialnumber	Name	Memory	Display	OS Version	Software Number	Network Operator	IMEI	ICCID	Bluetooth	User	Asset Tag	Description	WLAN Address	Site
	iPhone 11 Pro ...	A2218	123456789	iPhone ACO	512	iPhone ACO				123123123			DOCUSNAPSP...	DOSP100000-...		172.31.252.5#...	
	iPhone X	A1902	987654321	iPhone ADU	256	iPhone ADU				151515151			DOCUSNAPSP...	DOSP100002-...		172.31.252.96...	
	iPhone 8	A1863	456789123	iPhone ADA	128	iPhone ADA				162317189			DOCUSNAPSP...	DOSP100001-...		172.31.252.85...	

Manual entry

Asset templates

Individual assets

Import of existing data

Dashboard

Sites

Racks

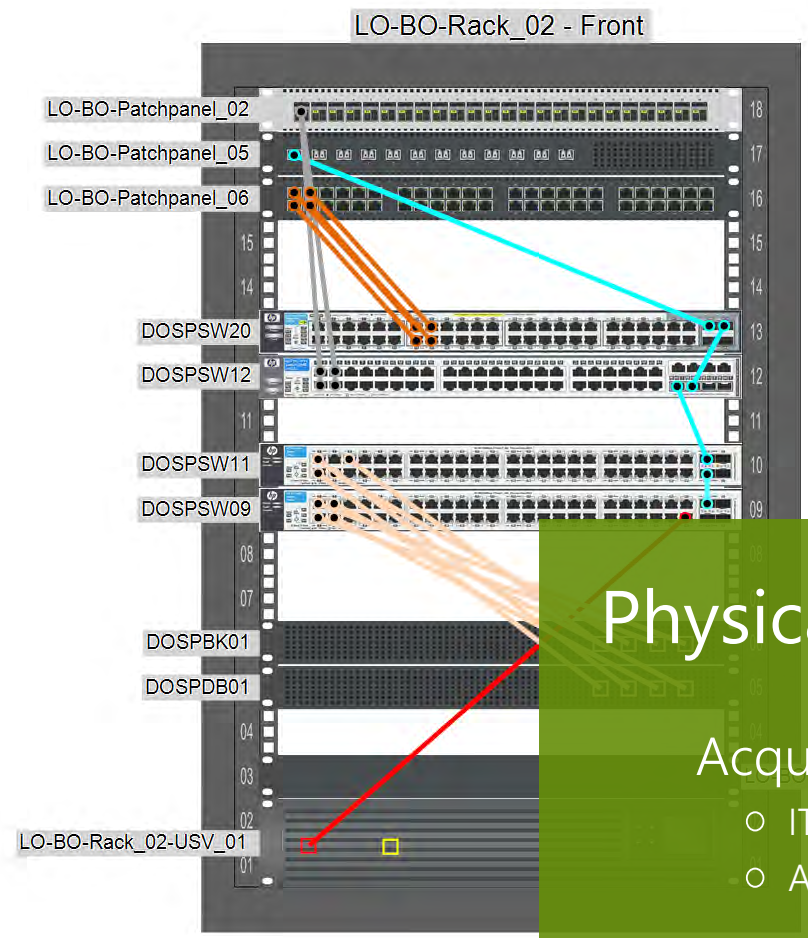
Site Elements

Rack Elements

Add. Info

Favorites

- Find Shape:
- Switch (18)
  - Patch Panel (14)
  - Network Socket (6)
  - System (10)
  - Assets (24)
  - Container (4)
  - Power Socket (3)
  - Power strip (6)
  - Other (3)



General

Name: \* LO-BO-Rack\_02

Type: Rack - 18 RU

HU:  Depth:

More Properties >

Cable Overview >

# Physical infrastructure

Acquisition of all physical components

- IT hardware (e.g. racks, patch panels etc.)
- Assets (e.g. extinguishing systems, access systems etc.)

True to original graphic representation

Discovery

Inventory

- Windows (AD) ★
- SNMP ★
- Active Directory ★
- VMware ★
- Microsoft 365 ★
- Azure Service ★
- AWS ★
- System Groups ★
- All Wizards

Overview

- DocuSnap Sports
  - Infrastructure
    - Reports
      - DOCUSNAPSPTS.COM
        - Reports
          - PROD.DOCUSNAPSPTS.COM
          - SALES.DOCUSNAPSPTS.COM
        - Workstations
          - Servers
          - Linux
          - Mac
        - SNMP Systems
          - Backup
          - Firewall
          - General
            - Managementboard
            - Network USB
          - Printer
            - DOSPRL001
              - 12/4/2022 12:13:32
                - Reports
                - General
                  - SNMP Network
                  - SNMP Interfaces
                  - SNMP ARP Cache
                  - SNMP Routing Table
                  - Printer Information
                  - SNMP Explorer
                - 10/31/2022 12:18:39
                - 10/29/2022 08:35:50
                - 10/25/2022 15:45:09
                - Documentation
              - DOSPRL002
              - DOSPRL003
              - DOSPRL004
              - DOSPRLMU01
              - DOSPRLMU02
              - DOSPRLMU03
              - DOSPRLMU04
            - SAN Switch
            - Security Terminal
            - Storage
            - Switch
          - Thin Clients
          - HP-UX
          - CIFS
          - Virtualization
          - IP Systems
          - Active Directory
          - Network Services
          - Application Servers
          - Database Server
          - Storage
          - Azure
          - Amazon Web Services
          - Microsoft 365
          - Summary

+ New | Data (4) | Editor | Analysis | Additional Information

+ New | X | Permissions | Assign Additional Information

| Name                     | Type                     | System Name for |
|--------------------------|--------------------------|-----------------|
| <b>Comments</b>          |                          |                 |
| Configuration File       | Additional Information   |                 |
| Maintenance Checklist    | Technical Documenta...   |                 |
| Printer User Manual      | User Manual              |                 |
| <b>Contracts</b>         |                          |                 |
| Maintenance Contract     | Operational Level Agr... |                 |
| <b>Financial Records</b> |                          |                 |
| Invoice                  | Direct Costs             |                 |

Title:

Maintenance Checklist

Comment Type: Technical Documentation

Show in Reports:

Show at the Beginning

Category: Administration

Description:

**B** / **I** / **U** / **abbe** / Arial | 10

- Check Toner Level  
- Print Test Page

# Additional information

Password safe

Storage of additional information

- Contracts
- Financial documents
- Tasks
- Comments

New | Edit | X Delete | Read File | CheckOut | CheckIn

| Title             | File Name | Pat | File Size | Checked Out | Description |
|-------------------|-----------|-----|-----------|-------------|-------------|
| Row Count: 0 of 0 |           |     |           |             |             |

Row Count: 5 of 5

# Documentation



Reporting



Visualization



IT concepts



Export



Integration into third-party products



HTML documentation



Webclient





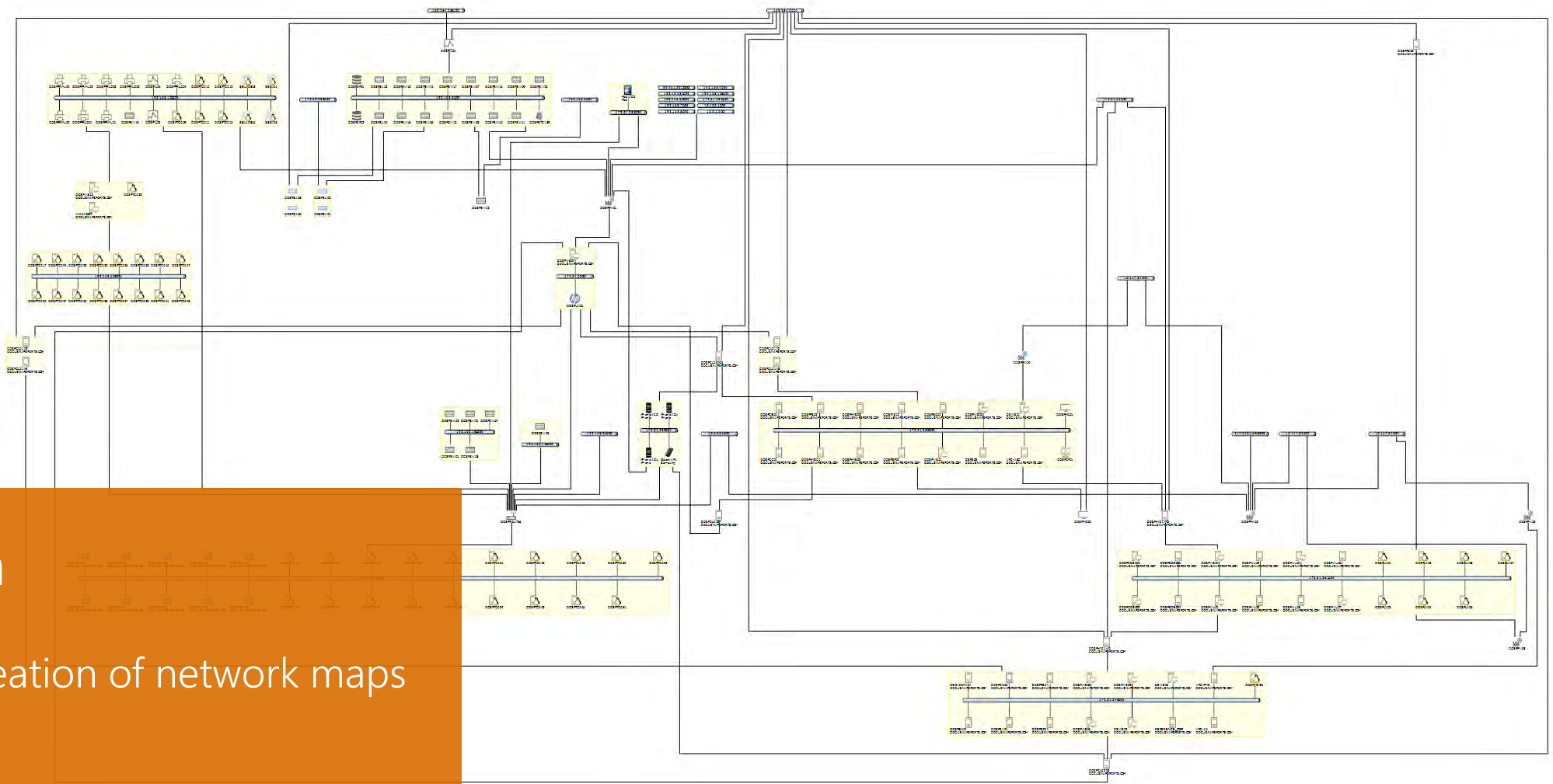
- Discovery
- Inventory
- Documentation
- IT Security
- License Management
- All Jobs
- Connect
- Physical Infrastructure
- Management

- Inventory
- Windows (AD) ★
  - SNMP ★
  - Active Directory ★
  - VMware ★
  - Microsoft 365 ★
  - Azure Service ★
  - AWS ★
  - System Groups ★
  - All Wizards
- Overview
- DocuSnap Sports
    - Infrastructure
      - Reports
      - DOCUSNAPSPTS.COM
        - Reports
        - PROD.DOCUSNAPSPTS.COM
        - SALES.DOCUSNAPSPTS.COM
        - Workstations
        - Servers
        - Linux
        - Mac
        - SNMP Systems
        - Thin Clients
        - HP-UX
        - CIFS
        - Virtualization
        - IP Systems
        - Active Directory
        - Network Services
        - Application Servers
        - Database Server
        - Storage
        - Azure
        - Amazon Web Services
        - Microsoft 365
        - Summary
        - Demo Customizing
        - Standard Maps
        - Communication
        - VLAN Overview
        - Standard Maps
          - Network Map with all Domains
          - Routing Map with all Domains
          - Topology Map with all Domains
          - VLAN Map with all Domains

+ New Analysis

Layout Filter Path Highlight Path Group Workstations Include IP Systems Group SNMP Systems Group IT Assets Ignore VMware Adapters

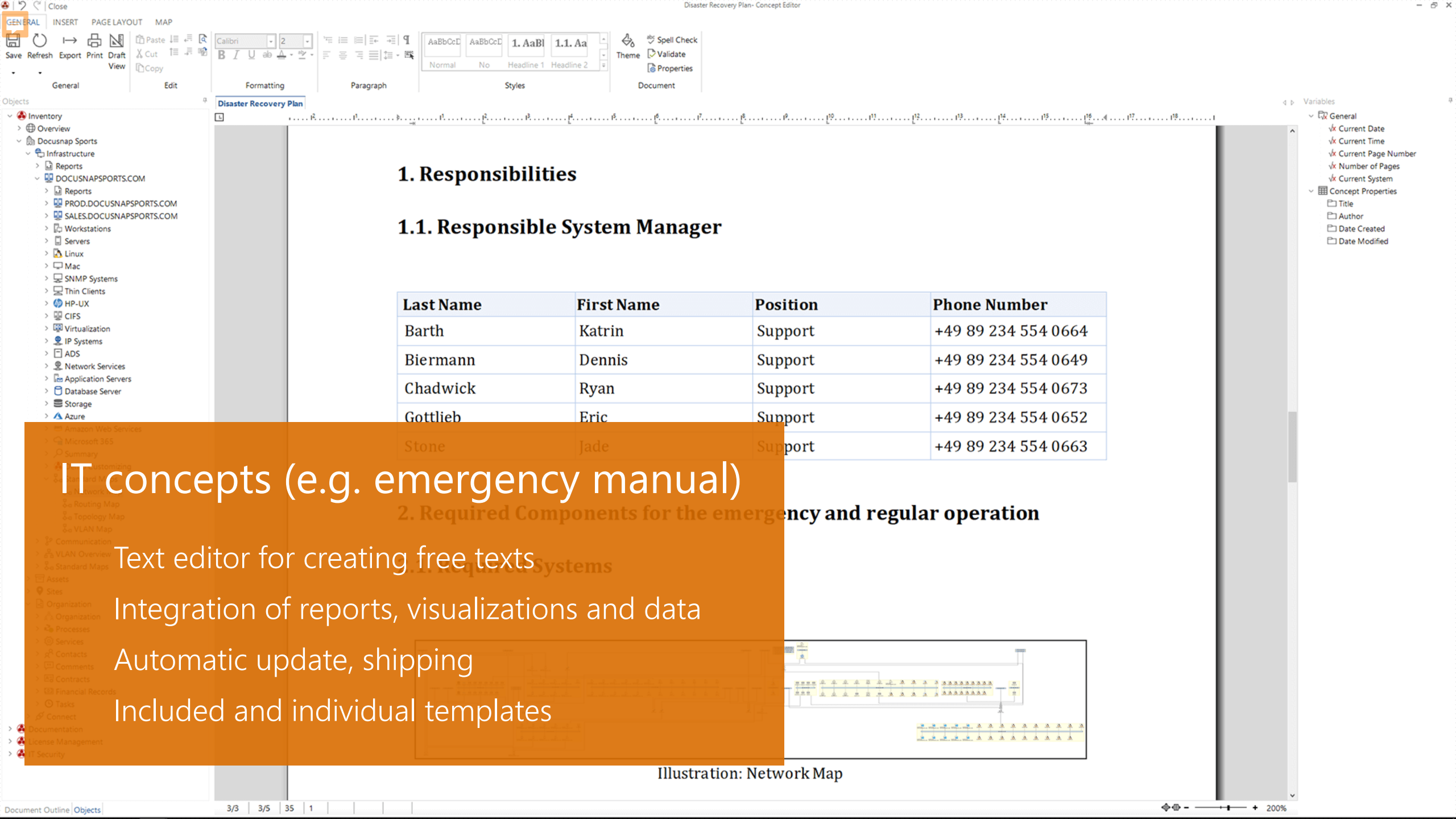
Search: [ ]



Visualization

Automatic creation of network maps

Visio export



# 1. Responsibilities

## 1.1. Responsible System Manager

| Last Name | First Name | Position | Phone Number        |
|-----------|------------|----------|---------------------|
| Barth     | Katrin     | Support  | +49 89 234 554 0664 |
| Biermann  | Dennis     | Support  | +49 89 234 554 0649 |
| Chadwick  | Ryan       | Support  | +49 89 234 554 0673 |
| Gottlieb  | Eric       | Support  | +49 89 234 554 0652 |
| Stone     | Jade       | Support  | +49 89 234 554 0663 |

## 2. Required Components for the emergency and regular operation

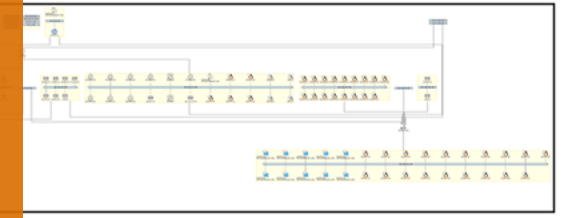


Illustration: Network Map

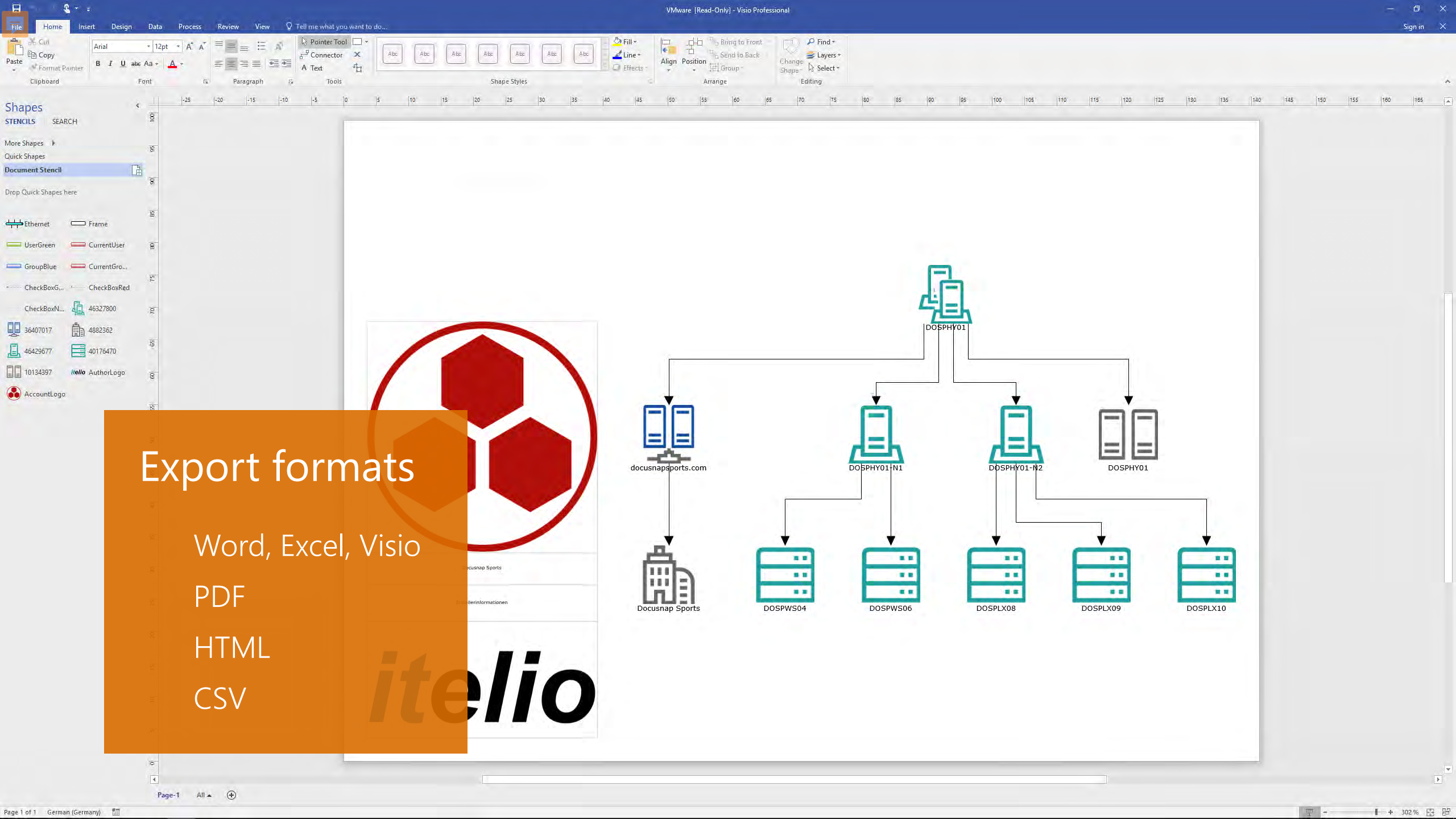
IT concepts (e.g. emergency manual)

Text editor for creating free texts

Integration of reports, visualizations and data

Automatic update, shipping

Included and individual templates



# Export formats

Word, Excel, Visio

PDF

HTML

CSV

itelio



# Integration into third-party products

## DocuSnap Connect

- Data export interface
- Freely definable
- Without SQL knowledge

## DocuSnap Link

- Starting DocuSnap from third-party applications
- Transfer of parameters possible



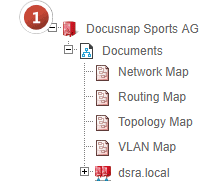
- Docusnap Sports
- Documents
  - Network Map with all Domains
  - Routing Map with all Domains
  - Topology Map with all Domains
  - VLAN Map with all Domains
- DOCUSNAPSPORTS.COM
  - Active Directory Map
  - Active Directory Domain Map
  - Active Directory Site Map
  - DHCP Map
  - Exchange Map
  - Network Map
  - Routing Map
  - Topology Map
  - VLAN Map
- Active Directory Users
- Active Directory Groups
- Systems
- Software Overview
- Management Overview
- Workstations
- Servers
  - Linux
  - Mac
  - SNMP
  - Thin Clients
  - HP-UX
  - CIFS
  - VMware
  - Citrix Hypervisor
  - Hyper-V
  - SQL Servers

## DOCUSNAP - SAMPLE DOCUMENTATION

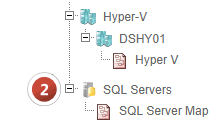
Our sample documentation uses a company named Docusnap Sample AG and the domain dsra.local to demonstrate how to create plans and reports in Docusnap X.

### FUNCTIONALITY AND USAGE:

1. Open the tree view by clicking the plus (+) sign.



2. You can find more reports and plans under each category name.



3. Links in plans give you access to additional object-specific information and reports.

**3**

ID: 318  
Name: DSHY01-N1  
Operating System: Microsoft Windows Server 2016 Datacenter  
Installation Date: 27.04.2018  
Language: English U.S.  
Time Zone: (GMT+01:00) Amsterdam, Berlin, Bern, Rome, Stockholm, Vienna  
Service Pack:  
Model: VMware, Inc. VMware Virtual Platform  
Serial Number: VMware-xx xx xx xx xx xx xx xx-xx-xx xx xx xx xx xx xx  
License Key: DOCUS-NAPDO-CUSNA-PDOCU-SNAPD  
Organisation:  
Free physical memory: 4,47 GB  
Free Space in Page File: 939,93 MB  
Free virtual memory: 5,49 GB  
Windows directory: C:\Windows  
IP Address: 169.254.1.192; 169.254.21.59; 172.31.16.53; 172.31.2.53  
Subnet mask: 255.255.0.0; 255.255.255.0  
Segment: 169.254.0.0; 172.31.16.0; 172.31.2.0; 172.31.251.0  
MAC: 00-15-5D-10-35-05; 00-50-56-96-1C-4C; 00-50-56-96-2D-C4  
DHCP: 255.255.255.255  
DNS: 172.31.251.10  
Gateway: 172.31.251.1  
WINS:

For many objects you can display additional details. Simply move the cursor over the plan. The information will automatically be displayed in a yellow box.

### ADDITIONAL MENU:

# HTML documentation

No database required  
Can be used independently of Docusnap  
Own HTML Viewer



# Analysis



Safety and security



License management



Business



Dependencies



IT Security

- Discovery
  - NTFS Analysis
  - Online Analysis
  - Filter Path
  - Report Jobs (csv)
  - NTFS Filter
  - User/Group Filter
  - Blocked Inheritance
  - Special Permissions
  - Explicit Permissions
- Inventory
  - Docusnap Sports
    - DOCUSNAPSPO RTS.COM
      - File System
        - Servers
          - DOSPF501
            - ADMINS
            - CS
            - DS
            - Departments
              - Reports
              - \_HAM\_Testing
              - Accounting
              - Blackboard
              - Development
              - HR
              - IT
                - Management
                - Marketing
                - Procurement
                  - Reports
                  - Contract Management
                  - Correspondence
                  - Cost Management
                  - Sourcing Strategy
                  - Supplier
                  - Supply Chain Management
                  - Sales
                  - Shipment
                  - IT\_Global
                  - Management\_Global
                  - Marketing\_Global
                  - print\$
                  - UPDATES\_STANDALONE
                  - Worldwide
                - CIFS
                - DFS
                - SharePoint
                - Exchange
  - PROD.DOCUSNAPSPO RTS.COM
  - SALES.DOCUSNAPSPO RTS.COM

+ New : Data IT Security Analysis

Enable Remove Current View Principal Report Directory Report Permission Origin User/Group Structure

User / Group

Search

+Add + Resolve Group + Resolve Group Recursively

Remove  Select all  Deselect all

Effective Permissions

- DOCUSNAPSPO RTS\r.edmunds
- DOCUSNAPSPO RTS\Accounting\_D

Explicit Permissions

- Creator Owner (DOCUSNAPSPO RTS\Administrator)
- DOCUSNAPSPO RTS\Administrator
- DOCUSNAPSPO RTS\Administrator
- DOCUSNAPSPO RTS\Management\_D
- DOCUSNAPSPO RTS\MSA\_FA\_D
- DOCUSNAPSPO RTS\Procurement\_D
- Local System

Inherited Permissions

- Local System

Share Permissions

- Everyone

| Type                              | Basic Permissions | Special Permissions | Inheritance |
|-----------------------------------|-------------------|---------------------|-------------|
| Allow                             |                   |                     |             |
| Deny                              |                   |                     |             |
| Full Access                       |                   |                     |             |
| Modify                            |                   |                     |             |
| Read and Execute                  |                   |                     |             |
| List Folder Contents              |                   |                     |             |
| Read                              |                   |                     |             |
| Write                             |                   |                     |             |
| Traverse Folder                   |                   |                     |             |
| Execute File                      |                   |                     |             |
| List Folder                       |                   |                     |             |
| Read Data                         |                   |                     |             |
| Read Attributes                   |                   |                     |             |
| Read Ext. Attributes              |                   |                     |             |
| Create Files                      |                   |                     |             |
| Write Data                        |                   |                     |             |
| Create Folders                    |                   |                     |             |
| Append Data                       |                   |                     |             |
| Write Attributes                  |                   |                     |             |
| Write Ext. Attributes             |                   |                     |             |
| Delete Subfolders and Files       |                   |                     |             |
| Delete                            |                   |                     |             |
| Read Permissions                  |                   |                     |             |
| Take Ownership                    |                   |                     |             |
| This Folder Only                  |                   |                     |             |
| Subfolders and Files Only         |                   |                     |             |
| Subfolders Only                   |                   |                     |             |
| Files Only                        |                   |                     |             |
| This Folder, Subfolders and Files |                   |                     |             |
| This Folder, Subfolders and Files |                   |                     |             |
| This Folder and Subfolders        |                   |                     |             |
| This Folder and Files             |                   |                     |             |

# Safety and security

## Safety analysis

- Status virus protection, backup
- Windows firewall rules

## Authorization analysis

- Effective permissions
- Graphical representation

License

Discovery

Inventory

Documentation

IT Security

License Management

All Jobs

Connect

Physical Infrastructure

Management

New

Assignment

Export

Import

Exclude Systems

Overview

Docusnap Sports

Reports

- Groups Company
- Product Company Details
- Product Company ELP Report
- Products Assignment List
- Products Company Brief Overview
- Products Company License Usage
- Products Company Multiple Versions
- Products Company Not Installed
- Products Sites

License Management

- License Management
- Undesired Licensing
- Software
- Currently Installed Software

New Edit License Reports

Open Refresh Report Designer Search Edit Bookmark Thumbnail View Schedule as Job

itelio



Group: Microsoft OS - Server

| Licensing                        | Available | Identified by Docusnap | Correction Value (manual) | Total Software Installation | Software Installation vs Licenses | Upgrade/Downgrade | Total |
|----------------------------------|-----------|------------------------|---------------------------|-----------------------------|-----------------------------------|-------------------|-------|
| Microsoft Windows Server 2012 R2 | 5         | 3                      | 0                         | 3                           | 2                                 | 0                 | 2     |
| Microsoft Windows Server 2016    | 1         | 16                     | 0                         | 16                          | -15                               | 0                 | -15   |
| Microsoft Windows Server 2019    | 20        | 12                     | 0                         | 12                          | 8                                 | 0                 | 8     |



## License management

Organizing the license agreements

Recording the installed software

Determination of license requirements

- Dashboard
- Sites
- Racks
- Site Elements
- Rack Elements
- Add. Info
- Favorites

Sites

+ ✓ 🗑️ 📄

| Name                      | Site Type | Status     | Additional Information              | Change Image                        |     |
|---------------------------|-----------|------------|-------------------------------------|-------------------------------------|-----|
| London                    | City      | No Changes | <input type="checkbox"/>            | <input checked="" type="checkbox"/> | ... |
| LO-BranchOffice           | Building  | No Changes | <input type="checkbox"/>            | <input checked="" type="checkbox"/> | ... |
| LO-BO-GF                  | Floor     | No Changes | <input type="checkbox"/>            | <input checked="" type="checkbox"/> | ... |
| LO-BO-GF-01_Production    | Room      | No Changes | <input type="checkbox"/>            | <input checked="" type="checkbox"/> | ... |
| LO-BO-GF-02_Warehouse     | Room      | No Changes | <input type="checkbox"/>            | <input checked="" type="checkbox"/> | ... |
| LO-BO-GF-03_Marketing     | Room      | No Changes | <input type="checkbox"/>            | <input checked="" type="checkbox"/> | ... |
| LO-BO-GF-04_ServerRoom    | Room      | No Changes | <input type="checkbox"/>            | <input checked="" type="checkbox"/> | ... |
| LO-Headquarters           | Building  | No Changes | <input type="checkbox"/>            | <input checked="" type="checkbox"/> | ... |
| LO-HQ-FL_I                | Floor     | No Changes | <input type="checkbox"/>            | <input checked="" type="checkbox"/> | ... |
| LO-HQ-FL_I-01_HR          | Room      | No Changes | <input type="checkbox"/>            | <input checked="" type="checkbox"/> | ... |
| LO-HQ-FL_I-02_HR          | Room      | No Changes | <input type="checkbox"/>            | <input checked="" type="checkbox"/> | ... |
| LO-HQ-FL_II               | Floor     | No Changes | <input type="checkbox"/>            | <input checked="" type="checkbox"/> | ... |
| LO-HQ-FL_II-01_Consulting | Room      | No Changes | <input type="checkbox"/>            | <input checked="" type="checkbox"/> | ... |
| LO-HQ-FL_II-02_Consulting | Room      | No Changes | <input type="checkbox"/>            | <input checked="" type="checkbox"/> | ... |
| LO-HQ-GF                  | Floor     | No Changes | <input type="checkbox"/>            | <input checked="" type="checkbox"/> | ... |
| LO-HQ-GF-01_Recruitment   | Room      | No Changes | <input type="checkbox"/>            | <input checked="" type="checkbox"/> | ... |
| LO-HQ-GF-02_ServerRoom    | Room      | No Changes | <input type="checkbox"/>            | <input checked="" type="checkbox"/> | ... |
| Munich                    | City      | No Changes | <input type="checkbox"/>            | <input checked="" type="checkbox"/> | ... |
| MU-BranchOffice           | Building  | No Changes | <input type="checkbox"/>            | <input checked="" type="checkbox"/> | ... |
| MU-BO-FL_I                | Floor     | No Changes | <input type="checkbox"/>            | <input checked="" type="checkbox"/> | ... |
| MU-BO-FL_I-01_Sales       | Room      | No Changes | <input checked="" type="checkbox"/> | <input checked="" type="checkbox"/> | ... |
| MU-BO-FL_I-02_Sales       | Room      | No Changes | <input type="checkbox"/>            | <input checked="" type="checkbox"/> | ... |
| MU-BO-GF                  | Floor     | No Changes | <input type="checkbox"/>            | <input checked="" type="checkbox"/> | ... |
| MU-BO-GF-01_Sales         | Room      | No Changes | <input type="checkbox"/>            | <input checked="" type="checkbox"/> | ... |
| MU-BO-GF-02_ServerRoom    | Room      | No Changes | <input checked="" type="checkbox"/> | <input checked="" type="checkbox"/> | ... |
| MU-Headquarters           | Building  | No Changes | <input type="checkbox"/>            | <input checked="" type="checkbox"/> | ... |
| MU-HQ-BM_I                | Floor     | No Changes | <input type="checkbox"/>            | <input checked="" type="checkbox"/> | ... |
| MU-HQ-BM_I-01_IT          | Room      | No Changes | <input type="checkbox"/>            | <input checked="" type="checkbox"/> | ... |
| MU-HQ-BM_I-02_ServerRoom  | Room      | No Changes | <input type="checkbox"/>            | <input checked="" type="checkbox"/> | ... |
| MU-HQ-FL_I                | Floor     | No Changes | <input type="checkbox"/>            | <input checked="" type="checkbox"/> | ... |
| MU-HQ-FL_I-01_Lab         | Room      | No Changes | <input type="checkbox"/>            | <input checked="" type="checkbox"/> | ... |
| MU-HQ-FL_I-02_Accounting  | Room      | No Changes | <input type="checkbox"/>            | <input checked="" type="checkbox"/> | ... |
| MU-HQ-GF                  | Floor     | No Changes | <input type="checkbox"/>            | <input checked="" type="checkbox"/> | ... |
| MU-HQ-GF-01_Accounting    | Room      | No Changes | <input type="checkbox"/>            | <input checked="" type="checkbox"/> | ... |
| MU-HQ-GF-01_Controlling   | Room      | No Changes | <input type="checkbox"/>            | <input checked="" type="checkbox"/> | ... |
| New York                  | City      | No Changes | <input type="checkbox"/>            | <input checked="" type="checkbox"/> | ... |
| NY-BranchOffice           | Building  | No Changes | <input type="checkbox"/>            | <input checked="" type="checkbox"/> | ... |
| NY-BO-BM_I                | Floor     | No Changes | <input type="checkbox"/>            | <input checked="" type="checkbox"/> | ... |
| NY-BO-BM_I-01_ServerRoom  | Room      | No Changes | <input type="checkbox"/>            | <input checked="" type="checkbox"/> | ... |
| NY-BO-FL_I                | Floor     | No Changes | <input type="checkbox"/>            | <input checked="" type="checkbox"/> | ... |
| NY-BO-FL_I-01_Sales       | Room      | No Changes | <input type="checkbox"/>            | <input checked="" type="checkbox"/> | ... |
| NY-BO-FL_I-02_Sales       | Room      | No Changes | <input type="checkbox"/>            | <input checked="" type="checkbox"/> | ... |

- Edit
- Add to Dashboard
- Add to Favorites
- Additional Information
- Edit Description
- Change Parent Site

Business

Mapping of departments

Site management

Definition of processes

Definition of business services

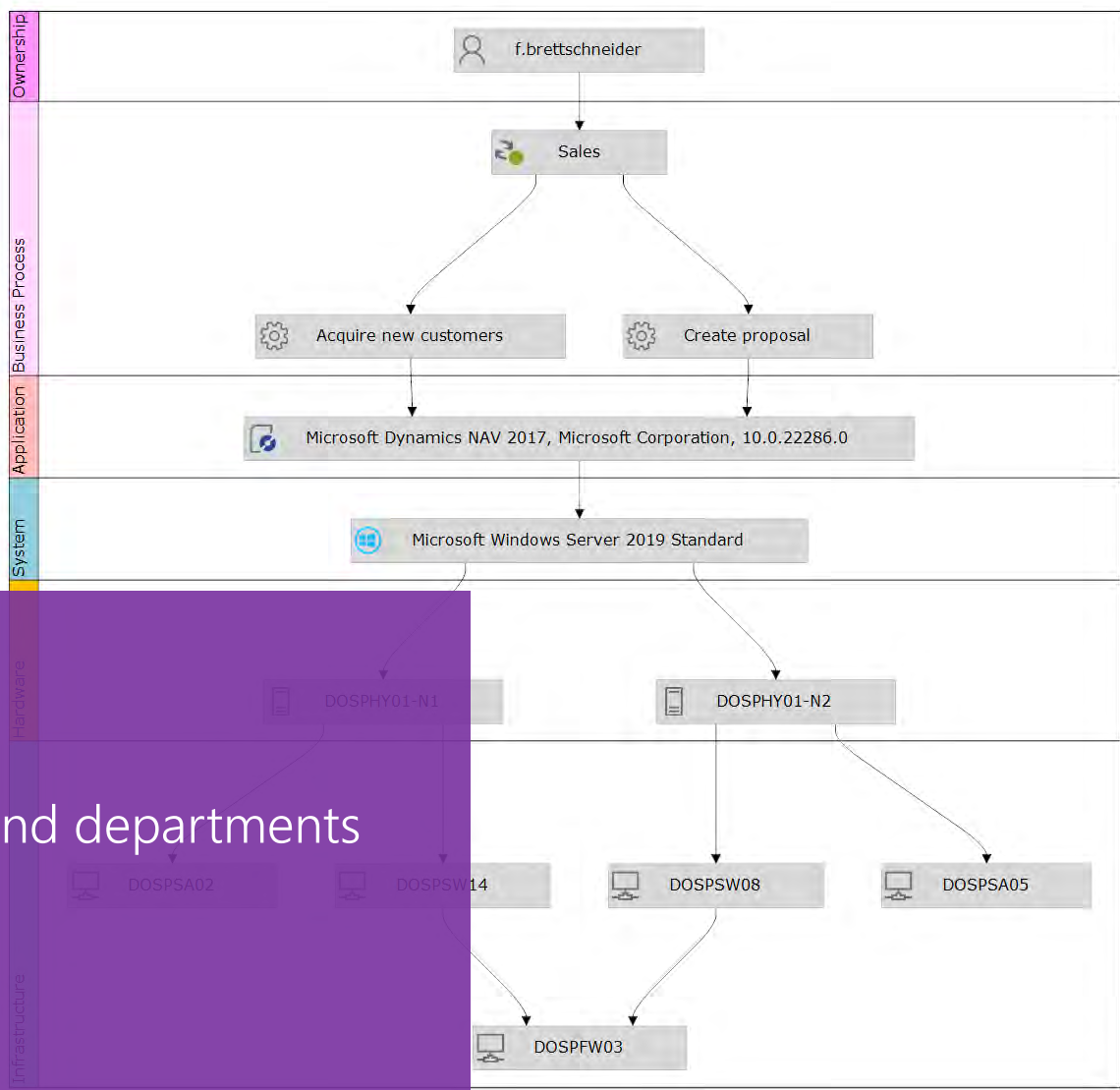
- Discovery
- Inventory
- Documentation
- IT Security
- License Management
- All Jobs
- Connect
- Physical Infrastructure
- Management

- Documents
- Overviews
  - Topology Map
  - Network Map
  - Active Directory
  - Exchange
  - Hyper-V
  - All Wizards

- Docusnap Sports
  - IT Documentation
    - IT Service - Example
    - OBASHI - Example
      - Views
        - New Customer Acquisition
          - Ownership
          - Business Process
          - Application
          - System
          - Hardware
          - Infrastructure
          - Maps
            - View Map
  - Documents
  - Concepts
  - Diagrams
  - Physical Infrastructure
  - Standard Maps

New Open Editor Analysis

Layout Filter Path Highlight Path Straight Connections Remove Empty Levels



# Dependencies on IT

- Assignment of processes and departments
- Definition of IT services
- Display of error chains

# Licensing model & services



Licensing of Docusnap



Docusnap contract model



Our services



# Licensing of Docusnap

## Subject to license

- Windows
- Linux
- macOS
- HP-UX
- Thin clients

## Not subject to license

- Router
- Printers
- Switches
- Mobile devices

# Docusnap contract model

## Purchase license

incl. 1 year service contract/  
incl. 3 years service contract

Docusnap as a purchase license  
with automatically renewing  
service contract.

## Annual subscription

Docusnap as a rental variant  
for maximum flexibility.



# Our services

Support

Trainings: on-site or remote

Webinars

Customizing



**Document it now!**

We understand IT.