

## **AHD-WAOP SA**

### **Alarm Panel (BNWAS)**



- ***Additional alarm indicator for guard alarm systems in accordance with BNWAS***
- ***For installation, e.g., in the officer's cabin***
- ***Easy to integrate into existing systems***
- ***Available as a flush-mount version and for surface mounting***

The AHD-WAOP system components are used to set up a so-called Bridge Navigation Watch Alarm System (BNWAS).

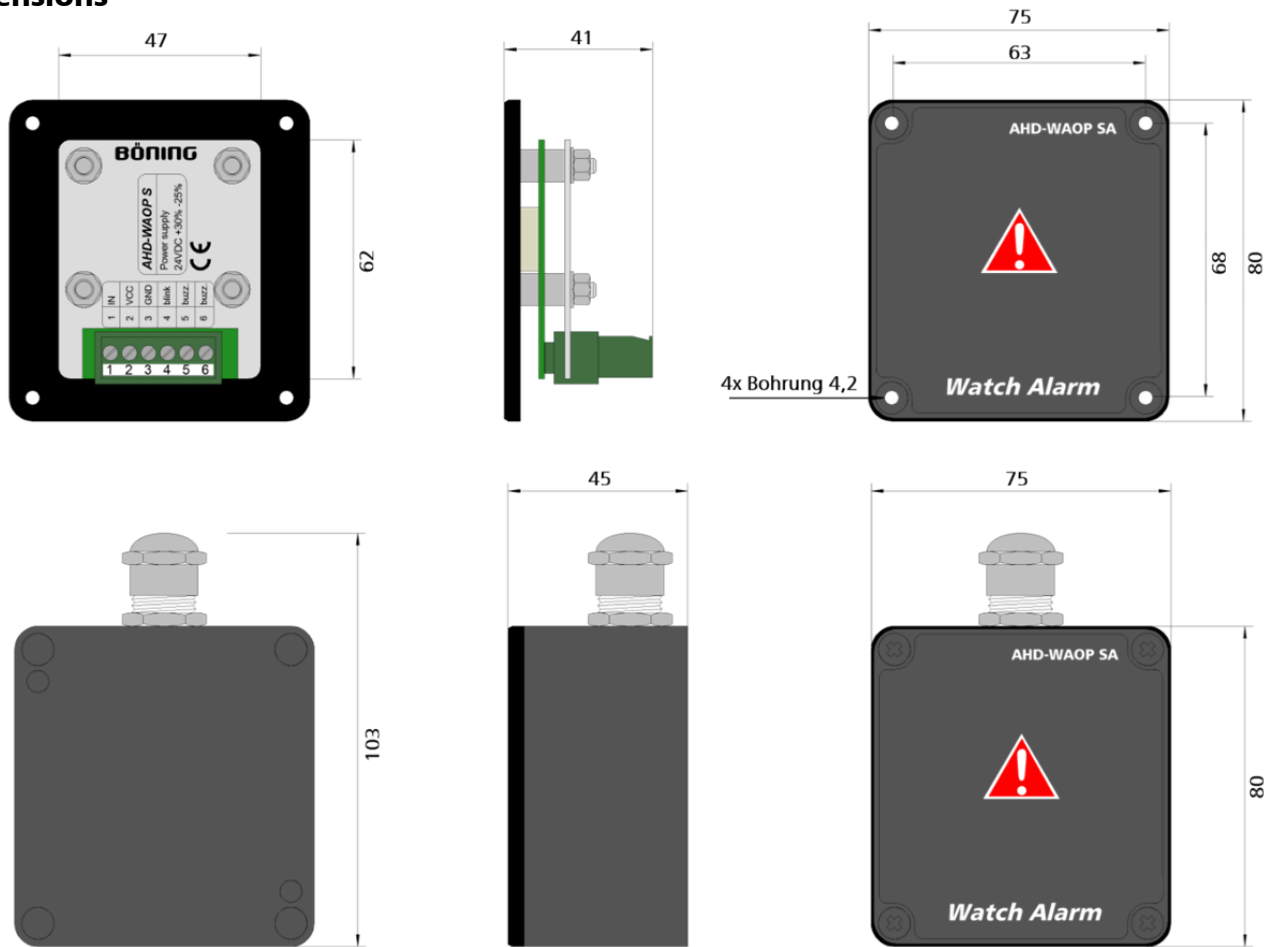
Depending on requirements, additional AHD-WAOP SA alarm panels can be used to serve as local notification points for active guard duty alarms. Alarms are given acoustically and visually.

The device is available in two versions:

- As a flush-mounted unit for installation in desks, consoles, or walls with the appropriate wall depth (AHD-WAOP SA)
- As a surface-mounted unit with IP 65 protection class, also suitable for outdoor use (AHD-WAOP SA AP)

Note: This panel does not include an alarm acknowledgment function.

## Dimensions



## Technical Data

|                                    |  |
|------------------------------------|--|
| Power supply                       | 24 V DC (+30% -25%)  |
| Current consumption                | Max. 50 mA   |
| Ambient temperature                | -15°C to +70°C   |
| Storage temperature                | -50°C... +85°C   |
| Weight                             | Approx. 0.4 kg   |
| Protection class                   | IP 56 (front)<br>IP 65 (front) AP<br>IP 20 (rear)  |
| External dimensions (mm)           | 75 mm x 80 mm x 45 mm<br>(Surface-mount version)<br>75 mm x 80 mm x 41 mm<br>(Flush-mount version) |
| Panel cutout (flush-mount version) | 48 mm x 63 mm  |
| Interfaces                         | 1 x External buzzer<br>1 x External optical signal   |
| Part number                        | AHD-WAOP SA: 16110<br>AHD-WAOP SA AP: 15052  |