



Your Space, Your Way
100% Bespoke Garden Rooms

GARDEN PODS

GARDEN ROOMS

BESPOKE SPACES

EXTENDED HEIGHT



WELCOME

Thank you for considering The Green Rooms for your garden room project. We specialise in creating beautifully crafted, functional spaces that are entirely bespoke—designed around the way you live, work, and unwind.

From your first consultation to the final handover, our focus is on exceptional craftsmanship, clear communication, and the use of high-quality materials that ensure every garden room is built to last. No two spaces are ever the same—because no two clients are.

In the following pages, you'll discover our approach, explore examples of our work, and see what sets us apart.

We look forward to bringing your vision to life.

Warm regards,



James Austin
Founder, The Green Rooms

Contents

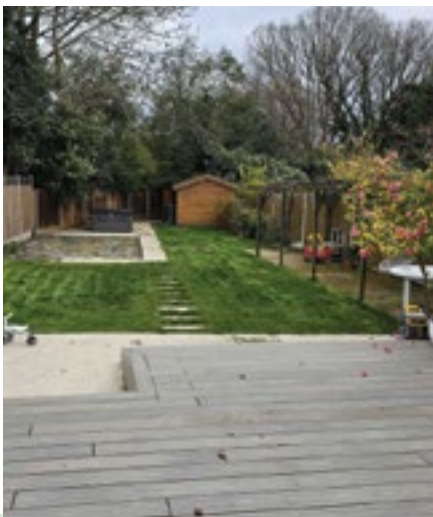
First Steps	4
Not All Garden Rooms Are Created Equal	6
Build Structure	8
Windows & Doors	10
Cladding Choices	12
Electrics	14
Climate Control	15
Flooring & Decking	16
Finishing	17
Garden Pods	18
Garden Rooms	20
Garden Rooms With "Secret" Storage	22
Garden Rooms With Shelters	24
Extended Height Garden Rooms	26
Case Study - Garden Gym	28
Case Study - Golf Simulator Studio	30
Case Study - Music Room	32
Why Choose The Green Rooms?	34
What Our Customers Say	35



FIRST STEPS

CONSULTATION

We start with a complimentary consultation to understand your vision and needs for your garden room. Whether you have a clear plan or need inspiration, we'll listen carefully and offer expert advice tailored to your preferences. This is your chance to share ideas, explore possibilities, and ask any questions as we work together to bring your vision to life.



SITE SURVEY

After the consultation, we conduct a free site survey to assess your space and its unique features. This visit helps us identify potential challenges and ensure our design fits seamlessly into your environment, enhancing both the functionality and beauty of your garden room.





DESIGN

With insights from the consultation and site survey, we create detailed designs for your garden room. We work closely with you, refining the design to ensure it reflects your vision, maximises space, and complements your home and garden. The result is a beautifully crafted garden room tailored to your lifestyle.

AGREEMENT

After fine-tuning the designs and finalising details like budget and overall vision, we'll move on to the agreement stage. We believe in complete transparency, so our quotes are detailed and comprehensive, covering every aspect of the project from start to finish. This way, you can be confident that there won't be any hidden costs or unexpected surprises along the way.

Our goal is to ensure a smooth and stress-free experience, allowing you to focus on the excitement of creating your perfect garden room.



So what's included in our quotes?

DELIVERY: We handle the transportation of all materials to your site.

PROFESSIONAL INSTALLATION: Our expert team ensures flawless installation.

GROUND SCREW FOUNDATION: Sustainable and durable, minimising environmental impact.

INSULATED SIPS CONSTRUCTION: High-performance panels for year-round comfort.

FULL ELECTRICAL PACKAGE: Complete electrical installation with safety certification.

DOORS & WINDOWS: Premium quality for aesthetics, security, and insulation.

FULLY PLASTERED INTERIOR: Smooth, paint-ready finish for a polished look.

FLOORING: Durable, stylish options to suit your taste.

SKIRTING BOARD: A finishing touch that enhances interior appeal.

CLADDING: High-quality external cladding for protection and visual impact.

WASTE CLEARANCE: Responsible removal and disposal of construction waste.

10-YEAR GUARANTEE: Coverage on materials and workmanship for your peace of mind.



NOT ALL GARDEN ROOM ARE CREATED EQUAL

With so many options available, finding the perfect garden room can feel overwhelming. While many providers seem similar, the differences in quality, craftsmanship, and service are significant. From premium materials to full customisation and dedicated aftercare, we go beyond the standard to deliver truly bespoke garden rooms. Here's what sets us apart.



SOME COMPETITORS

FOUNDATION



Concrete bases offer a solid foundation but have notable drawbacks. By sealing the ground surface, they block natural water drainage and may crack if the ground shifts. Their installation requires significant disruption, lengthy curing time, and has a higher environmental impact.

STRUCTURE



Traditional timber frames with insulation offer basic functionality but fall short in strength, thermal efficiency, and soundproofing. This method is prone to air leaks, reducing overall energy efficiency and durability.

TIMBER CLADDING



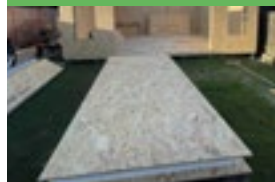
Redwood and pine cladding may be affordable, but they require regular maintenance to protect against weathering, warping, and decay. Over time, this can lead to higher costs and more effort to keep them looking and performing well.

GROUND SCREWS: A SMARTER FOUNDATION



Ground screws penetrate deep into the ground, minimising the risk of shifting from ground settlement. They offer a stable, mess-free base with no curing time and can be adjusted for precise results on any terrain.

SIPS: THE SUPERIOR CHOICE



SIPs provide superior strength, insulation, and soundproofing. While costing more upfront, their durability and energy efficiency deliver long-term savings, making them the smart choice for modern garden rooms.

OUR TIMBER CLADDING: DURABLE & LOW MAINTENANCE



We use high-quality cladding like oak, cedar, and charred larch, naturally resistant to rot and decay. While they cost more upfront, their durability and low maintenance ensure a long-lasting, beautiful garden room.



COMPOSITE
CLADDING

SOME COMPETITORS

ENTRY LEVEL COMPOSITE CLADDING



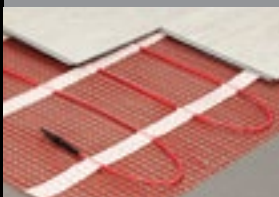
Competitors may use low-quality plastic cladding that is prone to fading under UV exposure and lacks fire resistance. These materials not only degrade quickly but also compromise safety, offering little long-term value and no meaningful guarantees.

BASIC FINISHING



Many competitors skip plastering, opting for melamine boards or pre-finished panels that can make interiors feel less refined. When reviewing the electrical specification, ensure your supplier includes essentials such as mains connection, testing, inspection, and certification, as these are often left for the customer to arrange, leading to added hassle and cost.

HIGH RUNNING COSTS



Many timber-frame constructions lack the same level of insulation requiring additional heating, to maintain a comfortable environment. While effective, these systems come with higher running costs and increased carbon footprint.

FINISHING

ECO
FRIENDLY



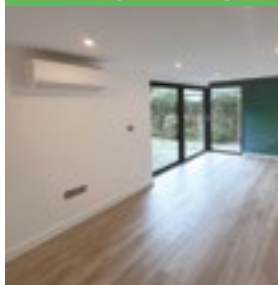
THE
GREEN
ROOMS

PREMIUM COMPOSITE CLADDING: 25 YEAR GUARANTEE



Our mid- and high-end composite cladding is UV-resistant, ensuring it maintains its colour and appearance for years without fading. It is also fire-rated for added safety and peace of mind. Backed by a 25-year guarantee, it combines durability, style, and low maintenance for a superior finish.

PREMIUM FINISHING



Our garden rooms are fully plastered for a smooth, high-quality interior finish. We provide a certified electrical package: mains connection, testing, inspection, and certification. We use a high quality wood-effect laminate flooring paired with skirting boards for a durable and stylish look. You can choose from a range of samples to ensure it suits your taste. We also offer professional decoration services or, if you prefer, leave the finishing touches to you.

ENERGY EFFICIENT



Our rooms provide exceptional insulation that minimises the need for heating or cooling. This results in a consistently comfortable space throughout the year, with reduced energy usage and lower running costs ensuring your garden room is both eco-friendly and cost-efficient.

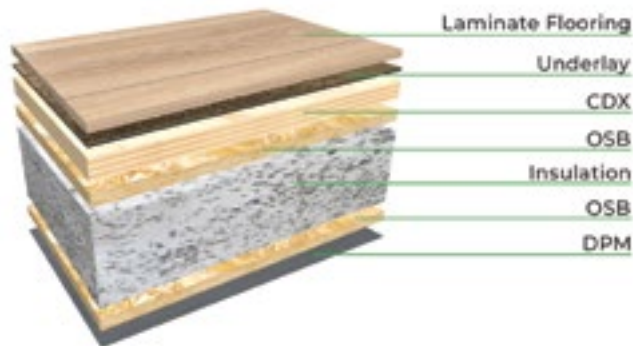


BUILD STRUCTURE

FOUNDATIONS

We start with strong, eco-friendly foundations using ground screws that are both highly durable and sustainable. Our hot-dipped, zinc-coated ground screws, ranging from 80cm to 1.2m in length, provide robust support for any size garden room. These screws are fully recyclable and a zero-landfill option, ensuring a minimal environmental footprint.

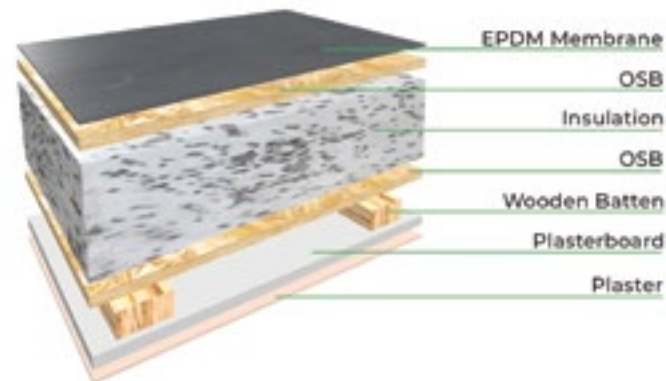
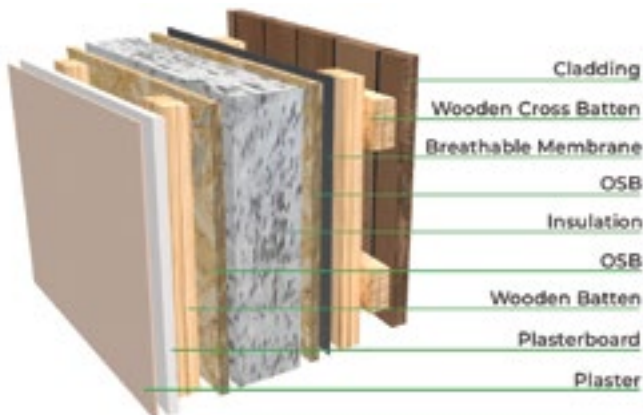
Unlike traditional concrete slabs, ground screws cause minimal disruption to your garden's natural ecosystem. They allow rainwater to drain naturally, preserving the health of your landscape. Plus, they adapt to uneven terrain without cracking or shifting, offering long-lasting stability that's built to endure.



FLOOR

We build from the ground up with precision and care. Your garden room will rest on a rock-solid foundation of structural insulated panels (SIPs), ensuring warmth and comfort no matter the weather. The SIP foundation is not only strong but also smart, offering a perfectly level, stable base that keeps moisture and cold at bay.

On top of this solid foundation, we lay high-quality laminate flooring, available in a range of finishes to suit your style. It's the perfect way to add that personal touch to your space, combining durability with elegance.



WALLS

Your garden room's walls are built with high-performance SIPs, ensuring superior insulation. We add vertical timber battens to create discreet channels for hidden pipes and cables, leaving the interior sleek and clutter-free. Then, we finish with plasterboard and a smooth layer of plaster for a flawless look.

Want to make the space truly yours? We offer bespoke options like feature walls, custom colours, and even sound-dampening acoustic panels. Need to mount heavy equipment? No problem—we can reinforce the walls to handle anything you need.

ROOF

We don't cut corners with the roof either. Our design includes at least 5 inches of sturdy structural insulated panels (SIPs), wrapped in a premium EPDM rubber membrane. This top-tier material creates a waterproof seal, backed by a manufacturer's 25-year guarantee, so you'll enjoy a warm, dry space all year round.

Our thoughtfully designed roof features a gentle slope to ensure smooth drainage. If you're looking for even more natural light, why not consider a skylight? Many of our clients love the extra daylight it brings into their garden rooms.



WINDOWS & DOORS

MATERIALS

We use aluminium for all our doors due to its strength, durability, and sleek, modern look. Aluminium is highly stable in all temperatures, resistant to warping, fading, and corrosion, ensuring long-lasting performance.

Our standard windows are supplied in aluminium; however, we can offer uPVC as a budget-friendly option.



COLOURS

Our windows and doors come in black or anthracite grey as standard. For a custom touch, we can produce them in any bespoke colour. uPVC options can also have a white interior to complement lighter décor.



BIFOLD DOORS

A stylish, space-saving option that folds neatly to create a seamless connection between your indoor and outdoor space. Made from aluminium, they offer expansive views, excellent insulation, and high-security locks.



FRENCH DOORS

Available in aluminium or uPVC, French doors provide a timeless design with a wide opening for easy garden access and unobstructed views.



SLIDING DOORS

Perfect for maximising space, sliding doors move along a track without swinging out, making them ideal for compact areas. Their large glass panels flood your room with natural light.



HERITAGE-STYLE DOORS

Also known as Crittall-style doors, these bring an industrial-chic aesthetic, blending modern and traditional styles while framing stunning garden views.



CASEMENT WINDOWS

A popular choice for ventilation and natural light. Available in aluminium or uPVC, they come in various sizes, shapes, and configurations.



SLOT WINDOWS

Sleek and modern, these wide, short windows offer extra natural light and ventilation while maintaining privacy.



FRENCH WINDOWS

Similar to casement windows but without a central post, allowing for a wider, unobstructed opening.



CORNER WINDOWS

Floor-to-ceiling glass wrapping around a corner, offering panoramic views and a seamless indoor-outdoor feel.



TILT & TURN WINDOWS

A versatile design that can swing open fully or tilt inward for controlled ventilation.



BIFOLD WINDOWS

Just like bifold doors, these open wide to merge indoor and outdoor spaces—great for entertaining.



SKYLIGHTS

Bring in natural light from above, brightening your space and creating a more open feel.



CLADDING CHOICES



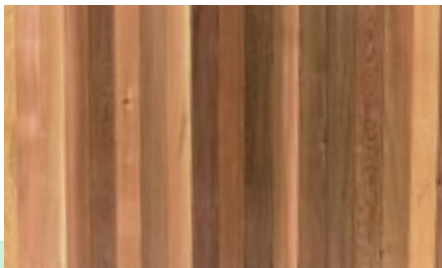
CHARRED SPRUCE (SHOU SUGI BAN)

For a bold and striking aesthetic, Charred Spruce, also known as Shou Sugi Ban, is a Japanese wood-burning technique that enhances durability while making the surface resistant to insects, decay, and fire. The deep-charred, velvety black finish offers a dramatic and contemporary look, making it a stand out choice for modern garden rooms.



WESTERN RED CEDAR

A premium choice, Western Red Cedar is valued for its rich colour, distinctive grain, and outstanding durability. Naturally resistant to rot and decay, it offers a high-end finish that adds warmth and rustic charm to any garden room. Despite its higher price, its beauty and longevity make it one of the most sought-after cladding options.



OAK CLADDING

Offering timeless beauty and durability, oak cladding naturally resists rot and decay while acting as an insulator, keeping your garden room comfortable year-round. With minimal maintenance, oak remains strong and elegant for years to come.





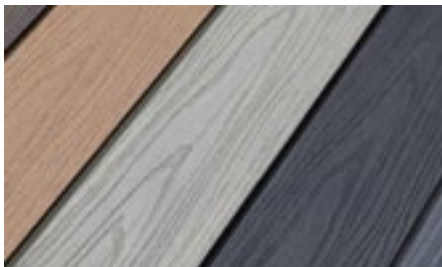
JAMES HARDIE BOARD

A durable, low-maintenance fibre cement cladding, James Hardie Board provides a sleek, contemporary finish while being resistant to moisture, rot, and fire. It offers the appearance of traditional timber without the upkeep and is available in a range of colours.



COMPOSITE CLADDING

Designed for durability and low maintenance, composite cladding combines the look of natural timber with superior resistance to rot, warping, and splintering. Made from recycled plastic and wood fibres, it requires no painting, oiling, or sealing and is UV stable, ensuring long-lasting colour.



METAL BOX PROFILE SHEETS

A cost-effective and durable choice, metal box profile cladding is ideal for boundary-facing walls. With a thick-grain, double-layer coating, these sheets withstand harsh weather and impacts with minimal maintenance—perfect for areas with limited access.





ELECTRICS

Every Green Room is fully wired and certified by a qualified electrician, ensuring the highest standards of safety, reliability, and craftsmanship. Whether you're working, relaxing, or entertaining, our range of electrical options allow you to tailor your space precisely to your needs.



STANDARD ELECTRIC PACK

As part of our standard package, we equip each room with light switches, double power sockets, and internal downlights, all finished in a sleek white. This ensures a clean and modern look that complements any decor style, providing functionality and aesthetics to enhance your space effortlessly. Perfect for creating a bright and welcoming environment.

NOT QUITE YOUR STYLE? If the standard electrics package doesn't quite match your vibe, you can upgrade to a look that does. Whether you're drawn to blue and brass sockets, elegant Corston fittings, or the convenience of smart sockets, we've got options to suit every style.

From classic to contemporary, these finishing touches help make your garden room feel truly yours.



WALL LIGHTS

Turn your garden room into a captivating night time retreat with the perfect lighting! Choosing the right lights can create a magical atmosphere, making your garden room the ideal spot for relaxing evenings under the stars.



CANOPY LIGHTS

Add a touch of enchantment to your garden by fitting canopy lights on your garden room's canopy. This charming addition not only beautifies your outdoor space but also creates a warm, inviting atmosphere, perfect for evening relaxation and entertainment.



EXTERNAL WEATHERPROOF DOUBLE POWER SOCKET

Ideal for everything from lawn care to garden entertaining – enjoy convenient outdoor power, whatever the weather.



WIFI

Boost your work-from-home setup with our WiFi pack! This package includes the supply and installation of a robust armoured CAT 6 Ethernet cable, expertly fitted from your home router all the way to your garden room, ensuring a strong, reliable connection.

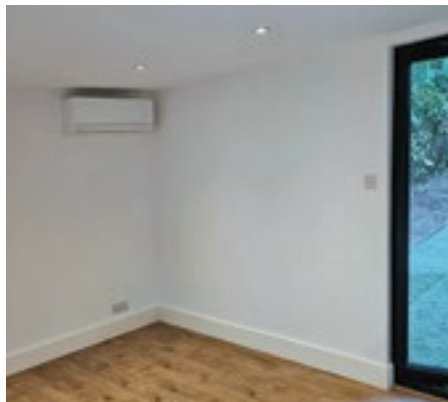
CLIMATE CONTROL

Whilst our garden rooms are built with Structural Insulated Panels (SIPs) to keep you warm in winter and cool in summer, you may wish to add air conditioning or a heater for personalised climate control.



SMART HEATERS

Designed for quick and efficient heating, smart wall-mounted heaters are perfect for garden rooms. Easily controllable via a Smart App, they let you set timers and schedules effortlessly. With some models, you can enjoy the convenience of voice control through a smart speaker. It's an ideal way to keep your garden room cosy and comfortable.



AIR CONDITIONING

Enjoy ultimate comfort with our smart-controlled air conditioning, designed to provide cozy warmth in winter and refreshing coolness in summer. This energy-efficient, whisper-quiet system allows easy adjustments, ensuring your garden room remains a perfect retreat for any activity throughout the year. Embrace a consistently comfortable, versatile space that enhances your home and lifestyle, no matter the season.





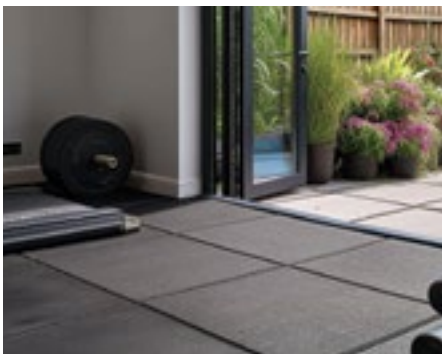
FLOORING & DECKING

Your garden room deserves a floor that feels as good as it looks. That's why we offer a carefully selected range of premium flooring options—each chosen for its durability, comfort, and style. Whether you're looking for the warm character of timber, the elegance of parquet, or the resilience of gym-grade rubber, we'll help you find the perfect finish to suit your lifestyle.



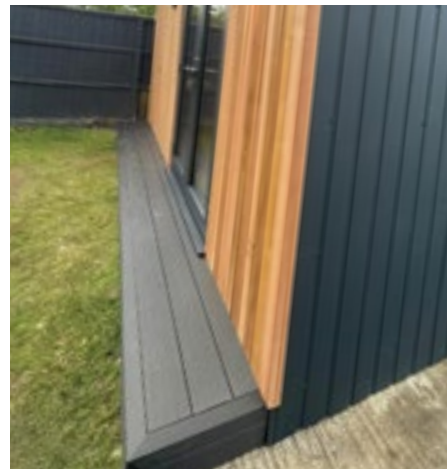
LAMINATE FLOORING

Our high-quality laminate flooring brings the natural beauty of wood into your garden room—without the upkeep. Each plank features a textured grain finish for a tactile, authentic timber look underfoot. Built from compressed natural fibres and finished with a tough protective coating, it's designed to handle everyday life while maintaining its elegance. With a glueless locking system, installation is seamless and clean, ensuring a perfect fit every time. Durable, stylish, and effortlessly practical, this is a flooring choice that balances form and function beautifully, making it ideal for everything from home offices to creative studios.



GYM FLOORING

If your garden room will serve as a dedicated fitness space, our 15mm professional gym flooring is the ideal choice. Made from heavy-duty sprung rubber, it's engineered for impact absorption, grip, and durability—standing up to weights, cardio sessions, and high-intensity workouts with ease. The cushioned surface also reduces fatigue and joint strain, offering added comfort while you train. Sleek, functional, and incredibly hardwearing, this flooring turns your garden room into a private gym that's as stylish as it is practical.



COMPOSITE DECKING

Enhance the entrance to your garden room with a composite step or decking area—perfect for creating a seamless transition between indoors and out. Built from durable, low-maintenance materials, our composite decking resists fading, warping, and splintering, making it ideal for year-round use. Whether you want a single step for easier access or a spacious deck for relaxing and entertaining, we can design it to complement your garden room perfectly. It's a practical and stylish addition that completes the look.

FINISHING

All of our garden rooms are beautifully finished with a high-quality plaster skim finish as standard, giving you a clean and smooth canvas to start with. Now, the fun part begins—deciding how to personalise it! Will you opt for a uniform paint colour throughout, or perhaps introduce a striking feature wall to add some flair? The choice is entirely yours. We're excited to see how you'll make the space uniquely your own!



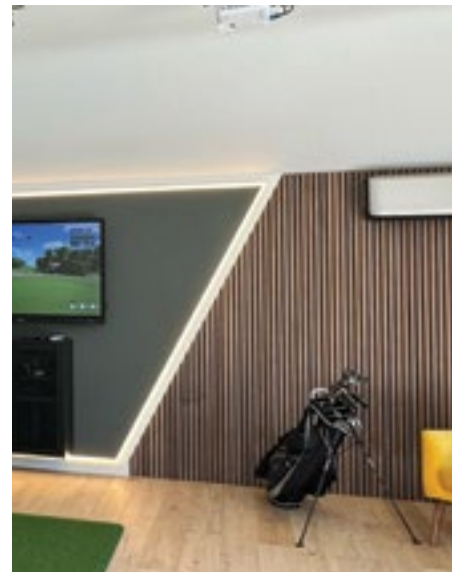
LUXE PAINT FINISH

All of our garden rooms come fully plastered as standard, ready for decoration. For a flawless, move-in-ready look, you can upgrade to our Luxe paint finish. This includes three coats of high-quality paint in your chosen colour, with the option to add a second colour for a feature wall. It's the perfect way to complete your space with a clean, professional finish that reflects your style.



INTEGRAL MAGNETIC BLINDS

Sleek, low-maintenance, and built into the glazing, our integral magnetic blinds are a modern solution for controlling light and privacy. Sealed between the glass panes, they stay dust-free and operate smoothly using a discreet magnetic slider — perfect for doors and windows where a clean, uncluttered look is key.



ACOUSTIC WALL PANELS

Enhance both the look and sound of your garden room with our Acoustic Wall Panels. Made from real wood and recycled materials, these panels are as sustainable as they are stylish. Designed to reduce echo and improve sound quality, they're ideal for music studios, home offices, or media rooms. Available in a range of finishes, they add warmth, texture, and a refined, contemporary feel to any space.



GARDEN PODS

Step into the world of compact and affordable outdoor elegance with our Garden Pods!

Our Garden Pods offer a smart, compact solution for those seeking extra space without complexity. Perfect as a home office, creative studio, or garden retreat, each pod combines premium design with everyday practicality. The front elevation features your choice of high-end cladding, while the remaining sides are finished in zero-maintenance metal. Choose from aluminium bifold, French, or sliding doors to flood the space with light and connect seamlessly to the outdoors. Built with care and intention, our pods focus on what truly matters—comfort, durability, and timeless design—making them the ideal addition to any modern garden.







GARDEN ROOMS

**A generous space to relax, create, or entertain
— in your own garden.**

What sets our Garden Rooms apart from our Pods is the integrated canopy—a striking architectural feature with LED downlights, perfect for creating a welcoming atmosphere after dark. Choose from aluminium bifold, sliding, or French doors to suit your style, and enjoy a wide range of window styles and sizes to personalise your space. Whether you're hosting, working, or unwinding, our Garden Rooms offer flexibility and elegance in equal measure. Starting from 3m x 2.5m, they deliver generous, light-filled living with a seamless indoor-outdoor connection—crafted for year-round comfort and everyday enjoyment.







GARDEN ROOMS WITH “SECRET” STORAGE

Smart storage, seamless design
- crafted for beautiful, clutter-free living.

Our Garden Rooms with integrated storage are designed to offer style and practicality in perfect harmony. A concealed storage area is tucked neatly behind a “secret” door, maintaining the clean lines and modern aesthetic of your garden room. It’s the ideal way to keep tools, furniture, or seasonal items out of sight without compromising on design. Whether you’re creating a peaceful office, a creative studio, or a cosy retreat, this clever addition ensures your space stays calm, organised, and inspiring—so you can focus fully on work, rest, or play in a beautifully refined environment.



This “Secret” Storage Shed features the upgraded Shed pack. With Laminate flooring and skirting board to match.

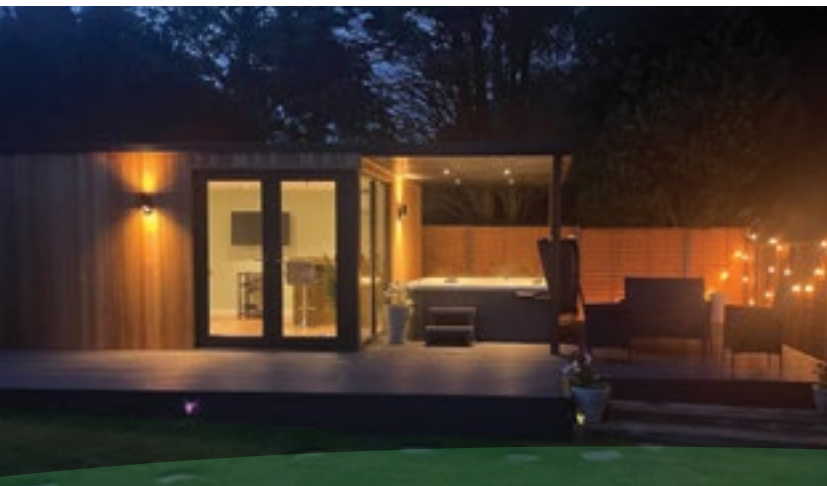




GARDEN ROOMS WITH SHELTERS

Create your own private spa-like retreat with a garden room and integrated outdoor shelter.

Designed for those who love to relax or entertain outside, our Garden Rooms with extended shelter areas offer the perfect spot for a hot tub, lounge seating, or an al fresco dining setup. The shelter is seamlessly built into the structure, providing protection from the elements while enhancing the overall aesthetic. With integrated LED downlights and space for outdoor speakers or heating, it's a year-round haven. Whether you're soaking under the stars or enjoying a peaceful morning coffee, this setup brings luxury outdoor living to your own back garden.







EXTENDED HEIGHT GARDEN ROOMS

Where space meets scale - discover the elegance of our extended height garden rooms.

Designed for those who need a little more headroom—literally—our extended height garden rooms offer a sense of openness and grandeur beyond the standard. Perfect for golf simulators, home gyms, yoga studios, or simply those who love a more spacious feel, the increased internal height creates an airy, uplifting environment. The elevated design also allows for taller glazing options, bringing in even more natural light and enhancing your connection with the outdoors. With the same craftsmanship, insulation, and bespoke detailing The Green Rooms is known for, this is outdoor space—on a whole new level.







CASE STUDY - Garden Gym

Transforming Unused Space into a Functional Garden Gym

In Chobham, we transformed a previously neglected, sloping strip of land into a stunning garden room gym. Our client, Nick, had an awkward, narrow space down the side of his house that had been overlooked for years. Recognising its potential, we converted this unused area into a fully functional gym, solving the problem of wasted outdoor space.

The project came with its own challenges. With underground cables running beneath the site, we

opted for concrete piles instead of our usual ground screws to avoid damaging the cables. This solution provided a stable, level foundation, allowing us to safely and effectively construct the 5.8m x 5.3m garden gym.

The completed gym is a stylish, insulated space with 3m black aluminium bifold doors and a skylight that fills the room with natural light. Clad in Western Red Cedar for a sleek, modern look, the gym features NAL55 Silvered Oak flooring from V4's Natureffect Aqualock collection, combining the authentic look of wood with durability for a high-traffic fitness area.

One of Nick's key requests was a hidden storage area

for his lawnmower and garden tools. We created a clever storage room accessible via a "secret" door on the outside, keeping equipment neatly tucked away while preserving the gym's clean, modern interior.

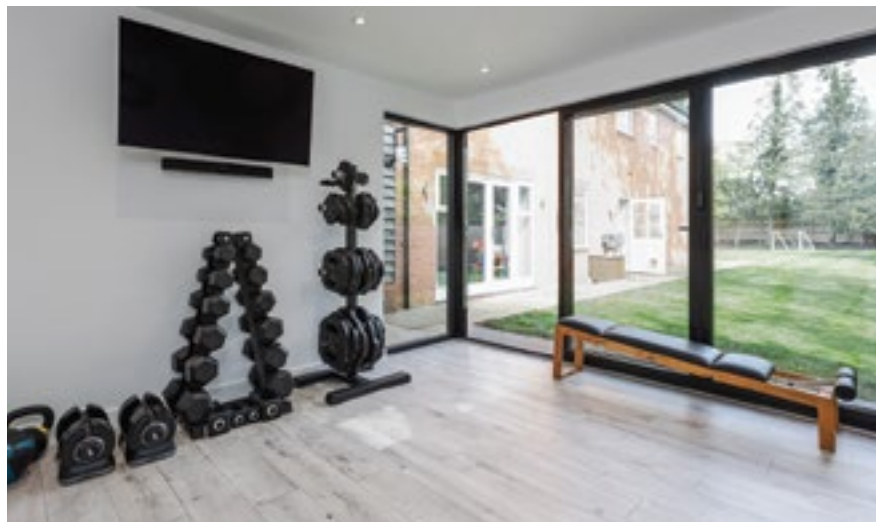
Inside, the gym is designed for both functionality and comfort, with Wi-Fi-controlled air conditioning, LED downlights, and plenty of power sockets for gym equipment. The hidden storage area adds valuable practicality without compromising the sleek, uncluttered aesthetic.

Nick was thrilled with the results, saying: "Incredible attention to detail, customer service, materials, and



quality of craftsmanship. Could not be happier with what James and his team built for us and perfectly on schedule too!"

This project perfectly illustrates how a custom-built garden room gym can enhance your fitness routine and transform unused outdoor spaces into practical, stylish areas. If you have an awkward or overlooked part of your garden, we can help you create something truly special, just like Nick's garden gym in Chobham.



Project Specification



Room

Garden Gym with Hidden Storage



Dimensions

5.8 x 5.3m



Cladding

Western Red Cedar
& Metal Box Profile



Flooring

Silvered Oak Natureffect
Aqualock Laminate



Window & Door Finish

Black Aluminium



Optional Extras

Skylight



Location

Chobham, Surrey



Built

2023



CASE STUDY - Golf Simulator Studio

Ultimate Home Golf Experience

We recently completed a bespoke extended-height garden room, purpose-built as a premium home golf simulator space. Designed for a client seeking a professional-standard golf experience at home, this project showcases how cutting-edge technology and thoughtful design can come together to create a luxury retreat in the garden.

Working in partnership with a leading golf simulator specialist, we integrated the latest simulator

technology into a space engineered for performance, comfort, and style. The increased internal height allows for unrestricted swings, making it ideal for serious practice sessions.

The exterior combines Red Western Cedar with Charred Larch cladding, creating a striking contrast between natural warmth and modern sophistication. This combination not only enhances the visual appeal but ensures durability and low maintenance in all weather conditions.

Access is via sleek black aluminium bifold doors with built-in Venetian blinds for privacy and light control. A matching bifold window runs along one side, opening

the room fully to the outdoors on warmer days and improving airflow during long sessions.

Inside, a silver air conditioning unit keeps the room climate-controlled year-round and looks sharp against the wooden acoustic panel feature wall. This wall not only improves sound quality for a more immersive experience but adds texture and depth to the room's design. Lighting was carefully planned to create an atmosphere that feels equally suited to training and entertaining.

We installed a hard-wearing, wood-effect laminate floor that offers both resilience and elegance—ideal for high-traffic use and providing a warm, sophisticated



finish that balances the modern design with homely comfort.

Outside, we added a covered canopy area over a screened hot tub—offering our client the chance to relax after a round in their own private spa-like setting. The entire area flows together beautifully, creating a multifunctional escape just steps from the house.

This project perfectly reflects The Green Rooms' commitment to blending innovation with craftsmanship. Whether it's for sport, leisure, or luxury, we design garden rooms that enhance lifestyles and exceed expectations.



Project Specification



Room

Extended Height Garden Room



Dimensions

6.9 x 4.6m



Cladding

Western Red Cedar
& Charred Larch



Flooring

Indian Summer Oak
Rustic Effect Laminate



Window & Door Finish

Black Aluminium



Optional Extras

Golf Simulator Set Up
Upgraded Air Conditioning
Shelter for Hot Tub



Location

Lyne, Surrey



Built

2024



CASE STUDY - Music Room

From Garden to Greatness: A Bespoke Music Studio with a Cinematic Twist

In a quiet corner of Surrey, we designed and built a stunning garden music studio for a professional music producer looking to elevate his home working environment. Our client needed more than just an office — he needed a creative sanctuary for music production, and a versatile family space that could double as a home cinema for his kids.

The result? A 5.5m x 3m garden studio clad in beautiful Western Red Cedar, with clean lines and a contemporary finish that blends effortlessly into its surroundings. Full-width, 5m heritage-style aluminium bifold doors bring an elegant touch to the exterior while flooding the space with natural light.

To reduce long-term upkeep, we used zero-maintenance dark grey metal sheet cladding on the boundary-facing walls — a durable and practical choice that protects the structure while remaining visually discreet. A sleek slot window on the side wall offers additional light without compromising wall space for studio monitors and equipment.

Built with SIPs (Structural Insulated Panels), the studio benefits from excellent thermal and sound insulation as standard, making it a quiet, comfortable environment to work in all year round. Inside, it's equipped with Wi-Fi-controlled air conditioning, LED downlights, smart switches, and electric blinds — giving our client full control over lighting, temperature, and ambience with a tap on his phone.

One stand out feature is the integrated projector and drop-down screen, turning the studio into a home cinema room at the touch of a button — perfect for winding down with the kids after a long studio session.



This space is more than just a music studio — it's a multi-functional retreat that perfectly balances work, creativity, and family life. Whether recording, mixing, or watching movies with the family, our client now has a purpose-built environment that meets his lifestyle needs without compromise.

This project showcases how we can transform even a modest garden footprint into a high-spec, custom-built space with style, comfort, and cutting-edge functionality.

Let us help you create a garden studio tailored to your passions, just like this one.



Project Specification



Room

Garden Room



Dimensions

5.5m x 3m



Cladding

Western Red Cedar



Flooring

Indian Summer Oak
Rustic Effect Laminate



Window & Door Finish

Anthracite Aluminium



Optional Extras

Air Conditioning
Heritage Style Bifold Doors



Location

Guildford



Built

2023



WHY CHOOSE THE GREEN ROOMS?

At The Green Rooms, we know that your garden room is more than just an additional space – it's an extension of your home and lifestyle.

Here's why so many customers choose us:

1. BESPOKE DESIGN & HANDCRAFTED QUALITY



We don't believe in one-size-fits-all. Every garden room we build is designed specifically for you, tailored to your preferences, needs, and space. Our skilled team handcrafts each project, ensuring exceptional quality and attention to detail in every element.

2. SUPERIOR MATERIALS & DURABILITY



We use the highest quality materials, including structurally insulated panels (SIPs) for strength and superior insulation, and premium cladding options. Our materials come with long-lasting warranties, giving you peace of mind that your investment will stand the test of time.

3. ENERGY EFFICIENCY & SUSTAINABILITY



Our garden rooms are designed to be energy-efficient, helping you stay warm in the winter and cool in the summer while reducing energy costs. We're committed to sustainable practices, using eco-friendly materials wherever possible.

4. EXPERTISE YOU CAN TRUST



With years of experience in designing and building bespoke garden rooms, we bring a wealth of knowledge and expertise to every project. We handle everything from design to completion, ensuring a smooth, stress-free experience for you.

5. PERSONALISED SERVICE



From your first consultation to the final handover, you'll work closely with our team to ensure every aspect of your garden room is exactly as you envision. We're here to guide you through the process and bring your ideas to life.



WHAT OUR CUSTOMERS SAY



Google
★★★★★

Nick

Incredible attention to detail, customer service, materials and quality of craftsmanship. Could not be happier with what James and his team built for us and perfectly on schedule too!

Google
★★★★★

Kate

I would thoroughly recommend James and the team at The Green Rooms. We had a couple of other companies quote for our garden room but as soon as I met James I knew that he would do a great job. The whole process was so easy that I kept thinking something must go wrong. It didn't! James is really responsive and patient with any queries and the team are a credit to him. They are polite and tidy and produce an excellent finish. We absolutely love our garden room which we use as a cinema room and home office and cannot recommend The Green Rooms highly enough.

Google
★★★★★

Jag

We can't speak highly enough of James and his team. From quotation to start to finish they were professional, hard working and brilliant. We are so pleased with the finished article. Great communication throughout the build (unlike so many in the trade). Total attention to detail and left the site clean and tidy too. Would highly recommend.

Google
★★★★★

Philip

I've had an excellent experience with The Green Rooms; James and the team did a great job of constructing my garden office/storage room at a competitive price. Finish is very good and they have been very helpful to answer all of my questions, even after the build is complete. Highly recommended.





Lyne Lane
Lyne
Surrey
KT16 0AN



01932 640242



INSTANT QUOTE

info@thegreenrooms.com
www.thegreenrooms.com