

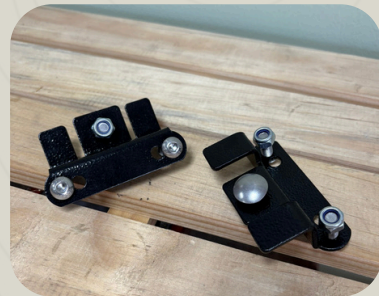


FITMENT INSTRUCTIONS

QUICK-EN-SUITE TO RTT

TOOLS REQUIRED:

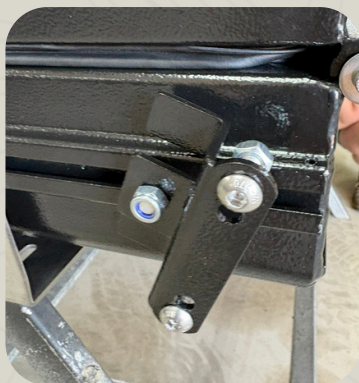
- 13mm Spanner
- 5 Allen Key



TO FIT

Please use the images with the steps as a reference to help you with the fitment.

1. Open the Quick-en-Suite to RTT brackets carefully. Make sure not to cut the brackets while unwrapping.
2. Using the cup square bolts provided in the bracket set, slide the brackets into the accessory rail on the side where you want to install the shower.



3. Measure the distance between the shower's mounting holes. Adjust the brackets to match this distance, then tighten them securely.



4. Mount the shower using the Q-e-S Fitment Instructions onto the brackets and fasten it firmly.



PLEASE DON'T HESITATE TO CONTACT US IF YOU NEED ANY SUPPORT REGARDING THE FITMENT.
THANK YOU FOR YOUR SUPPORT, WE HOPE YOU LOVE YOUR QUICK PITCH PRODUCT.