

# FITMENT INSTRUCTIONS

## HIGH LIFT JACK BRACKET

### TOOLS REQUIRED:

- 2 x 13mm Spanner

### TO FIT

*Please use the images with the steps as a reference to help you with the fitment.*

1. Open the brackets from the packaging, ensure that the brackets include:

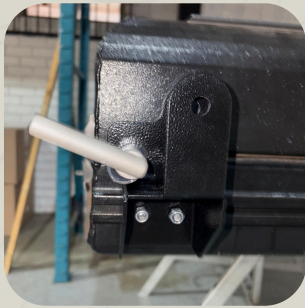
- 2 x Cup square bolts
- 1 x Locking bolt
- 2 x Hex heads



2 x Cup  
Square Bolts

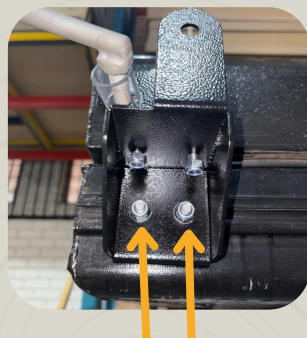
Locking Bolt

**2.** Use the cup square bolts and slide them into the RTT accessory on the side rail. Space the two (2) brackets to a position where they line up with the holes in the high lift jack.

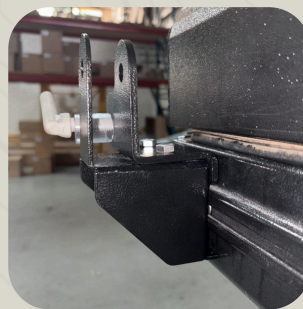


Hole in HLJB and Bracket should align

**3.** Tighten the two cup square bolts that attaches the bracket to the RTT

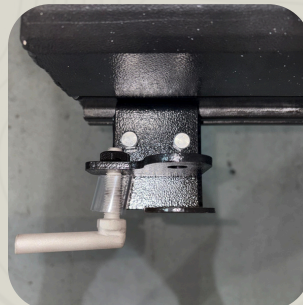
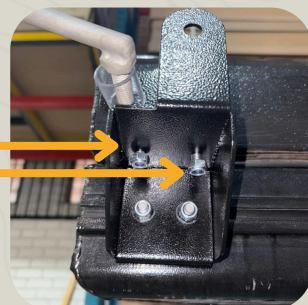


Cup Square Bolts



**4.** Tighten the two hex head bolts that clamps the bracket onto the RTT accessory rail.

Hex Head Bolts



PLEASE DON'T HESITATE TO CONTACT US IF YOU NEED ANY SUPPORT REGARDING THE FITMENT.  
THANK YOU FOR YOUR SUPPORT, WE HOPE YOU LOVE YOUR QUICK PITCH PRODUCT.