



# FITMENT INSTRUCTIONS

## QUICK RELEASE BRACKETS

### TOOLS REQUIRED:

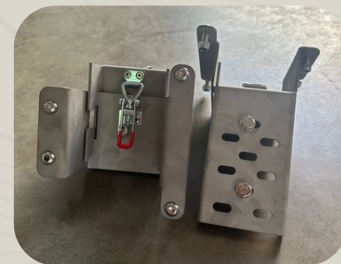
- 13mm Spanner
- 5 Allen Key
- Drill
- 5mm Drill bit
- Pop Rivet

### TO FIT

*Please use the images with the steps as a reference to help you with the fitment.*

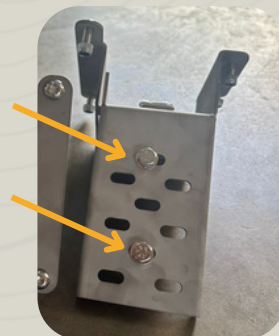
#### **Unpack & inspect**

1. Open the box carefully, so you do not cut the brackets.



#### **Prepare the mounting bolts**

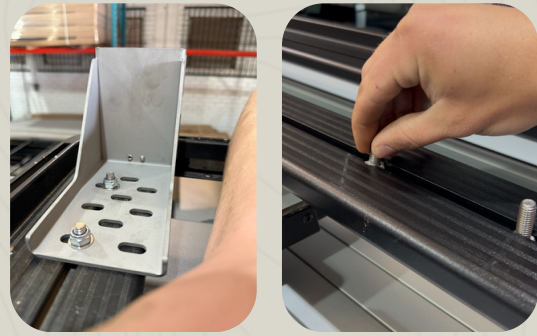
2. Use the supplied bolts in the base of the foot bracket (as shown in the reference image).
3. Slide these bolts into the slot of your mounting surface, whether it is a roof rack or load bars.



### **Position the brackets**

**4.** Use the slots in the base of the bracket to slide and adjust the foot bracket into the desired position.

**5.** On a double cab, it is recommended to move the bracket as far back as possible for best support and clearance.



---

### **Secure the brackets**

**6.** Once the bracket is lined up correctly, fasten the bolts securely using a 13 mm spanner.

**7.** Double-check that all brackets are firmly tightened before mounting the awning.

**8.** Repeat the process for the other foot bracket and mount it as far forward as possible to have a better weight distribution.



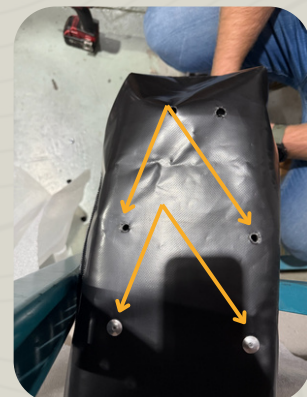
---

### **Mounting the Release Bracket onto the Awning**

**9:** Remove existing fasteners.

**10:** On the awning panel, as in the image, remove the two large flange pop rivets on the back panel that secure the bag.

**11:** Next, remove the two button-head bolts at the hinge point.





### **Fit the first release bracket (hinge side)**

**12:** Take the bracket with one short flange and one long flange.

**13:** Position the bracket at the hinge point.

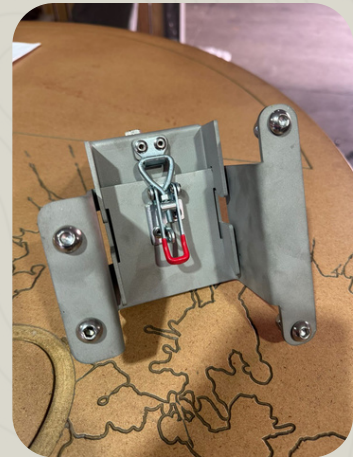
**14:** Using the supplied bolts, secure the bracket with:

**15:** Two (2) bolts into the hinge of the awning

**16:** Two (2) bolts into the awning pan

**17:** Tighten firmly using a 13 mm spanner and an 8 mm Allen key.

**18:** Refer to the photo below for the correct orientation.



### **Fit the second release bracket (front side)**

**20:** Clip the second release bracket onto the front foot bracket.

**21:** Measure the distance between the mounting holes and mark out the drilling points.

**22:** If the holes line up with pre-existing holes, you may use them instead of drilling.

**23:** Drill the holes (if required).

**24:** Fasten the bracket using the supplied bolts, tightening with a 5 mm Allen key and a 13 mm spanner.



PLEASE DON'T HESITATE TO CONTACT US IF YOU NEED ANY SUPPORT REGARDING THE FITMENT.  
THANK YOU FOR YOUR SUPPORT, WE HOPE YOU LOVE YOUR QUICK PITCH PRODUCT.