



FITMENT INSTRUCTIONS

AWNING TO TENT BRACKET FITMENT

TOOLS REQUIRED:

- Drill
- 8mm Drill Bit
- 5 Allen Key
- 13mm Spanner
- Sika Flex



TO FIT

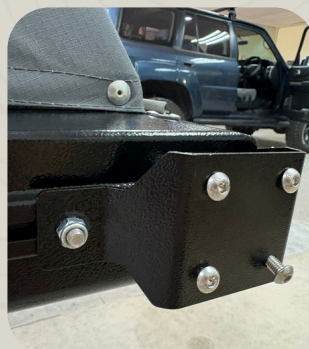
Please use the images and the steps as a reference to help you with the fitment.

1. Open the packaging carefully, ensure that you do not cut the the list below while opening:

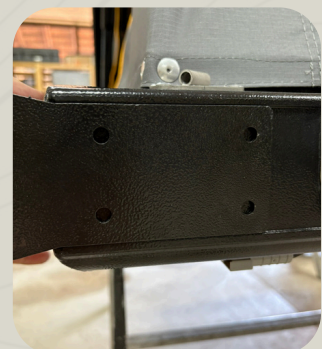
- 2 x Brackets
- 3 x M8 Cup Square bolts
- 10 x M8 Button heads



2. Use the Corner bracket that bolts onto the back of the tent (Refer to photo 1), and slide the cup square bolt into the side rail of the tent. Place the bracket in place and loosely tighten the cup square. (Refer to photo 2)



1. Side of Tent

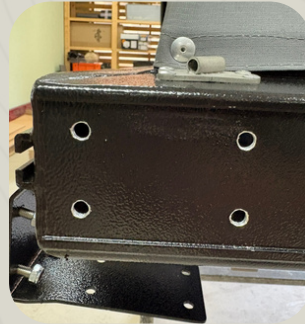


2. Back of Tent

3. Drill 4 holes: From the back of the tent, where the latches are located, mark out the four (4) using the bracket as a template (See picture below). Drill using the 8mm drill bit where you marked out.

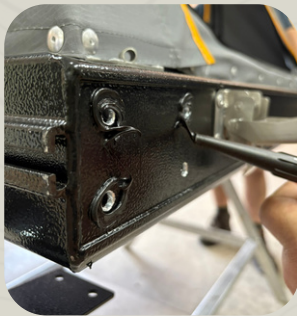


Marking of Holes



Drill out holes

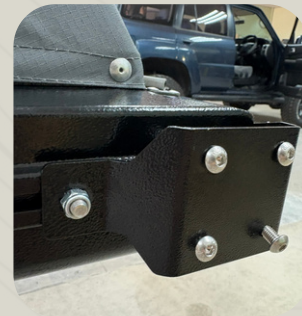
4. Fasten the bracket: Use silicon and seal the holes in the tent (Refer to photo below). After you have applied the silicon, hold the bracket in place and use the four (4) M8 button heads supplied. Fasten the bracket at the back of the tent and tighten the cup square bolt on the side of the tent.



Silicon



Fastened bolts



Fastened bolts

5. Mounting the front bracket. Use the 2 cup squares in the bracket and slide them into the accessory rail at the front of the tent and loosely tighten (See photo below).



6. Measure from the hinge holes on the awning and adjust the bracket on the tent accordingly. Fasten the bracket in place.

7. When all is lined up, you can now fit the awning to your Quick Pitch RTT.

PLEASE DON'T HESITATE TO CONTACT US IF YOU NEED ANY SUPPORT REGARDING THE FITMENT.
THANK YOU FOR YOUR SUPPORT, WE HOPE YOU LOVE YOUR QUICK PITCH PRODUCT.