

Vertical Garden Specifications

Turn-key Garden Installations

Crafted with Preserved Plants & Installed by GOTW Trained Crew

Declare.

fitwel

Healthier Hospitals

BREEM

WELL

Red List Free

LEED v4.1

HPD
VERSION 2.3

100%
BIODEGRADABLE

MINDFUL
MATERIALS

Sustainable Minds
Transparency Catalog

ASTM
INTERNATIONAL
E-84 Class 1

CDPH
Compliant with VOC
Standards

Third
Party
Verified

Model	Gardens with Moss Combinations	Gardens with Foliage with Flower Foliage
Tier 1	Up to 50% Moss coverage over Flat Moss canvas	Up to 50% Foliage/Moss coverage over Flat Moss canvas
Special Tier	Ball Moss or Lichen dominant designs	50 to 75% Foliage coverage over Flat Moss, Ball Moss, or Lichen canvas
Tier 2	N/A	75 to 100% Foliage/Moss coverage over Flat Moss canvas

Garden Panel Components:

- Preserved Plants:** Preserved Moss, Lichen, Forest, Grass, Fern, Eucalyptus, Flower foliage & Hydrangea species.
- Backing Board:** ¼" Thick maple plywood laminated with formaldehyde-free (NAF-No-added formaldehyde), soy-based assembly process.
- Adhesive:** A solvent-free adhesive that meets the strict requirements of Indoor Environmental Quality (IEQ).
- Standard Frame (Add on):** ¾" thick, 3" deep AWI premium-grade wood with satin white or satin black finish, includes 3/4" plywood backing. (Typical Section details on page 4 & 5).
- Metal Angle 1 (Add on):** ½" thick, 1 ¼" x 1 ¼" metal angle with black finish. (Typical Section details on pages 7 & 8).
- Metal Angle 2 (Add on):** ½" thick, 2" x 2" metal angle with black finish, includes 3/4" plywood backing. (Typical Section details on pages 10 & 11).
- Frameless Finish (Add on):** Special finish to disguise the edges of the garden panels. (Typical Section details on pages 13 & 14).

While all gardens are custom created, it's important to maintain the structural integrity & morphology of the preserved plants used. To maintain the utmost longevity and visual standards, **below are the requirements for sizes:**

Model	Size/Minimum
Tier 1	12" minimum. For sizes 6" – 12" is priced at Special Tier level. Less than 6" not possible
Special Tier	4" minimum for Lichen and 6" minimum for Flat Moss canvas designs
Tier 2	6" minimum. Preserved plant selection may be limited due to scale

Weight:

lbs 1.4 – 1.8/sqft depending on preserved plants and Model# selection (excludes add on frame weight).

How to Specify:

- ✓ **Pattern** is rendered by Garden on the Wall® for approval as a part of the submittal process.
- ✓ **Color/Plant Species** TBD during Design Rendering as a part of the submittal process.
- ✓ **Size TBD per CD.** All dimensions will be coordinated with Shop Drawings and will be verified in the field.

Installation & Edge Details:

- ✓ **Minimum of 1" depth required** for seamless integration that ensures the edges of our garden panels are disguised. An integration that conceals the edges of our garden panels is essential. If a recessed installation isn't possible, an alternative edging solution—such as picture framing, trim, metal angles, or a frameless finish must be used (to be provided by GOTW or others).
- ✓ **¾" Plywood Blocking** to be provided by GC.
- ✓ **Garden panels are attached** to the vertical surfaces with screws.
- ✓ **A 7-year warranty certificate** is to be issued by Garden on the Wall® upon completion of the Installation and Touch-up/Micro-mossing.

Spec Division:

Division 9 Special Wall Surfaces 097700.

3_Part Spec available upon request.

Copyright © 2025 Garden on the Wall® LLC. All Rights Reserved.

Sustainability, Health & Safety Credentials with 3RD Party Testing:

- ✓ Published Health Product Declaration HPD (v 2.3).
- ✓ Red List Free.
- ✓ Flame Spread and Smoke Index per ASTM E84: Class 1 or A.
- ✓ Declare Label.
- ✓ 100% Biobased Carbon Content per ASTM 6866.
- ✓ Complies with:
 - California Department of Public Health (CDPH) VOC standards for both Classroom and Office Scenarios.
 - BREEAM Building Standards.
 - Healthy Hospitals Initiative (HHI).
- ✓ Listed in:
 - Mindful MATERIALS database.
 - Sustainable Minds Transparency Catalog.

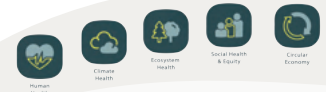
Credit/Points Contribution:

- ✓ LEED® v4 and LEED® v4.1
- ✓ The WELL v2 Building Standard™
- ✓ fitwel®

NRC / Sound Absorption Test:

0.44 for all Model# Selections.

Please contact info@gardenonthewall.com for additional documentation support.



garden on the wall®
THE ART OF PRESERVED NATURE

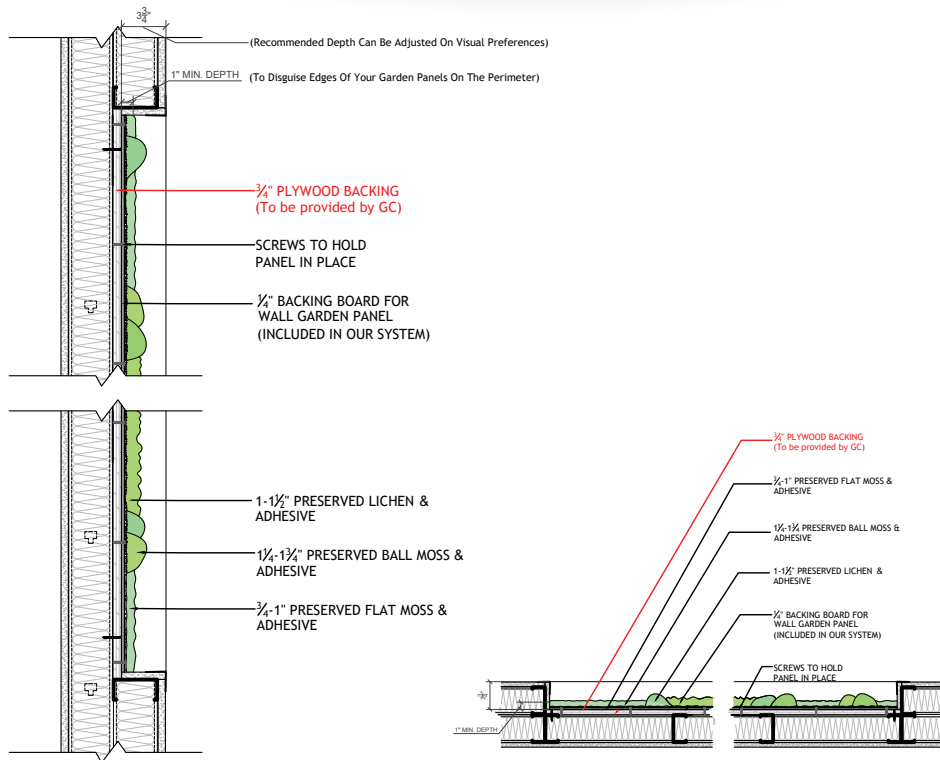
Vertical Garden Specifications

Turn-key Garden Installations

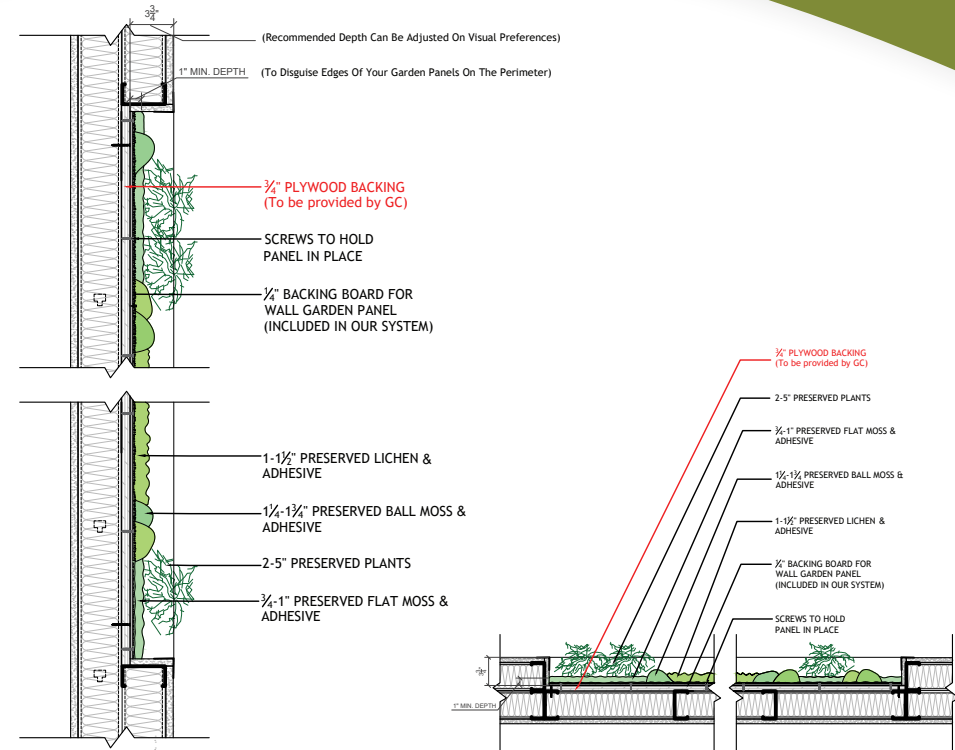
Crafted with Preserved Plants & Installed by GOTW Trained Crew



Gardens with Moss Combinations



Gardens with Moss & Foliage (w/ Flower Foliage)



Tier 1 & Special Tier

Recessed Wall - Typical Section/Plan Details

Copyright © 2025 Garden on the Wall® LLC. All Rights Reserved.

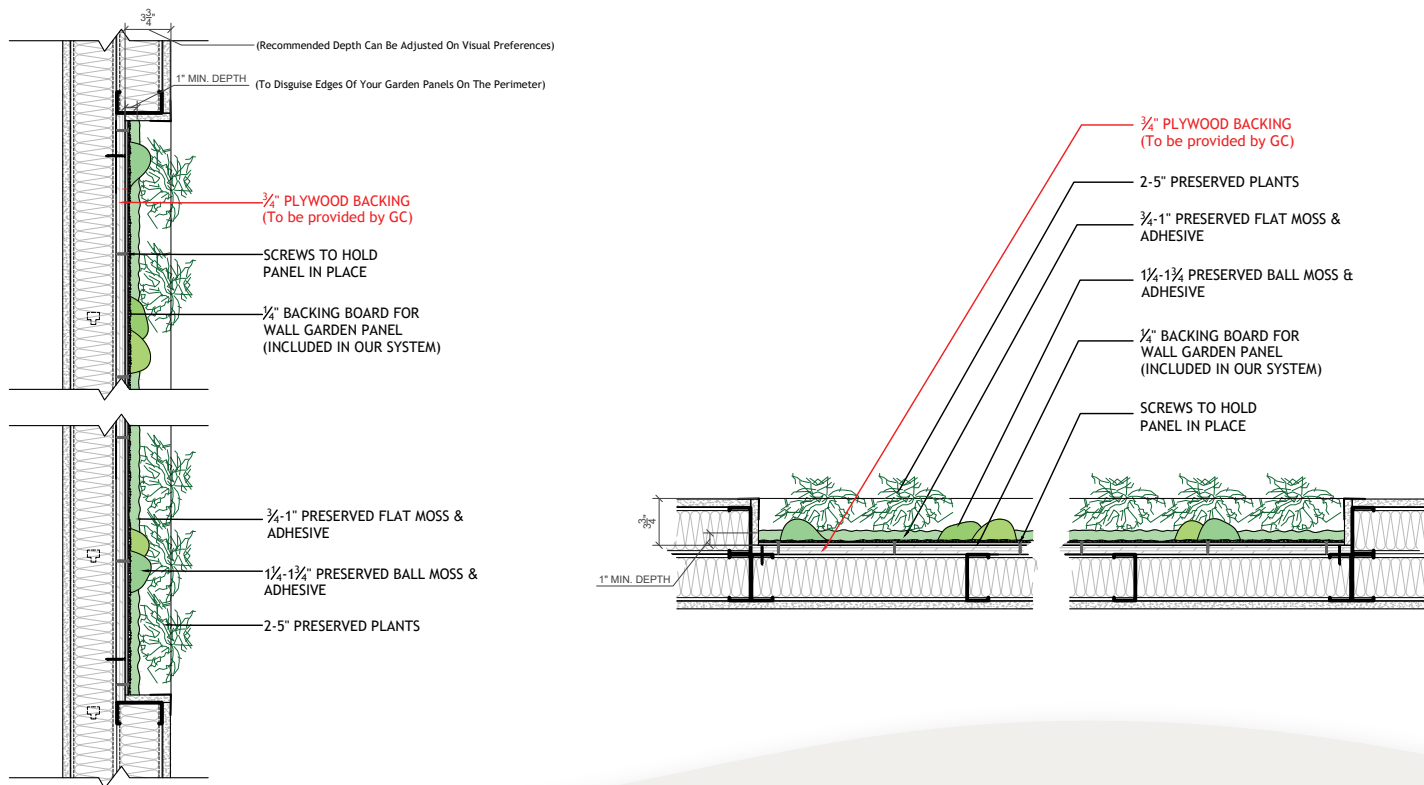
Vertical Garden Specifications

Turn-key Garden Installations

Crafted with Preserved Plants & Installed by GOTW Trained Crew



Gardens with Moss & Foliage (with Flower Foliage)



Tier 2

Recessed Wall - Typical Section/Plan Details

Copyright © 2025 Garden on the Wall® LLC. All Rights Reserved.

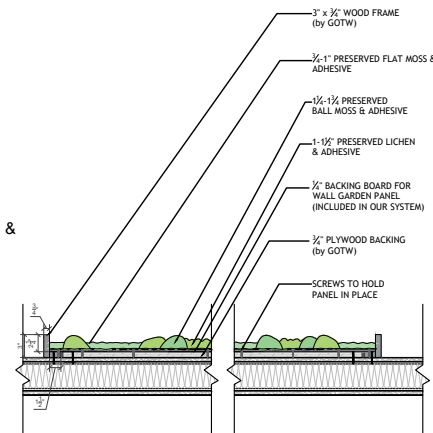
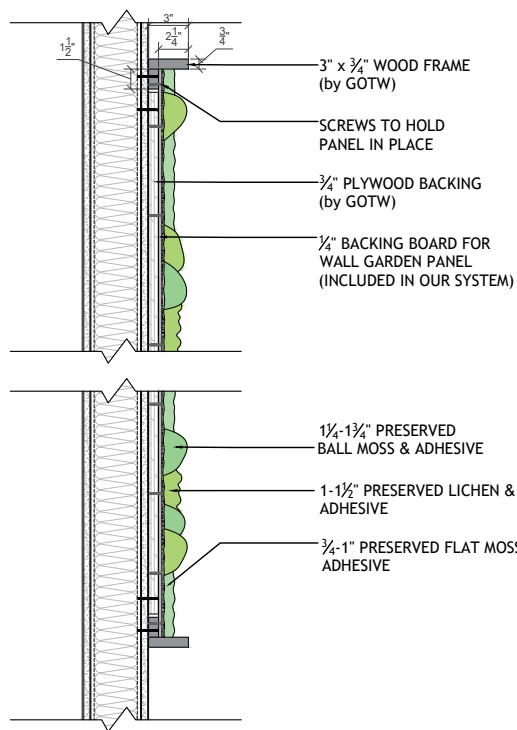
Vertical Garden Specifications

Turn-key Garden Installations

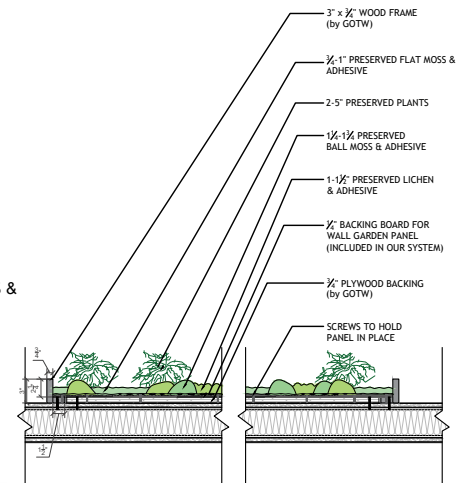
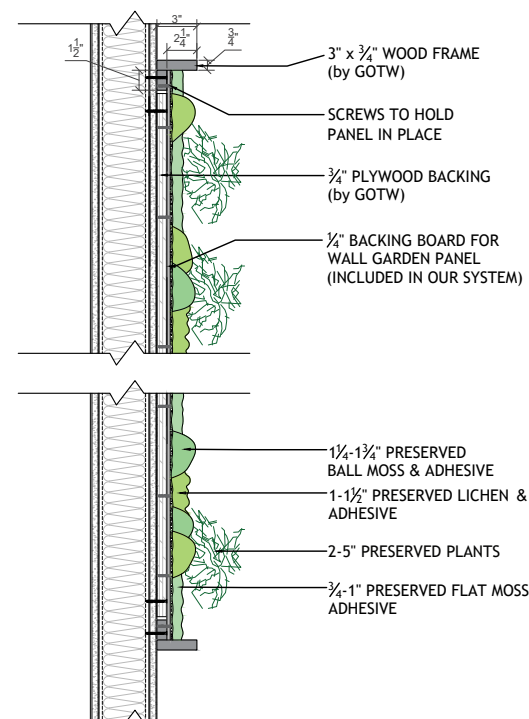
Crafted with Preserved Plants & Installed by GOTW Trained Crew



Gardens with Moss Combinations



Gardens with Moss & Foliage (w/ Flower Foliage)



Tier 1 & Special Tier

On-site Framing (Add on) - Typical Section/Plan Details

Copyright © 2025 Garden on the Wall® LLC. All Rights Reserved.



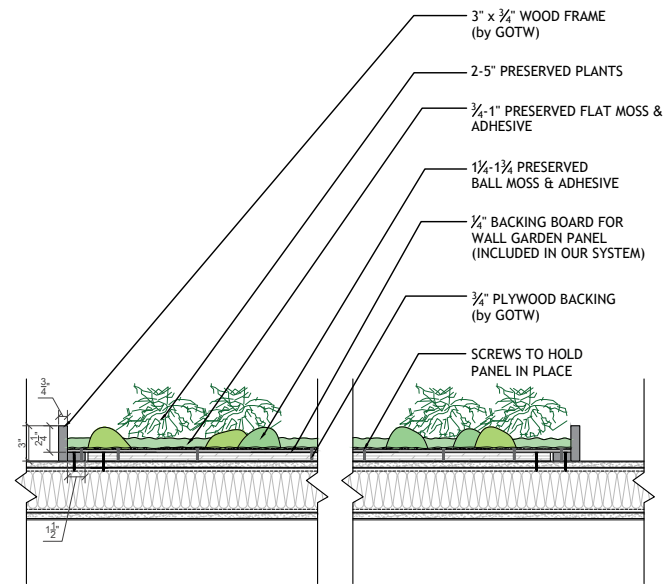
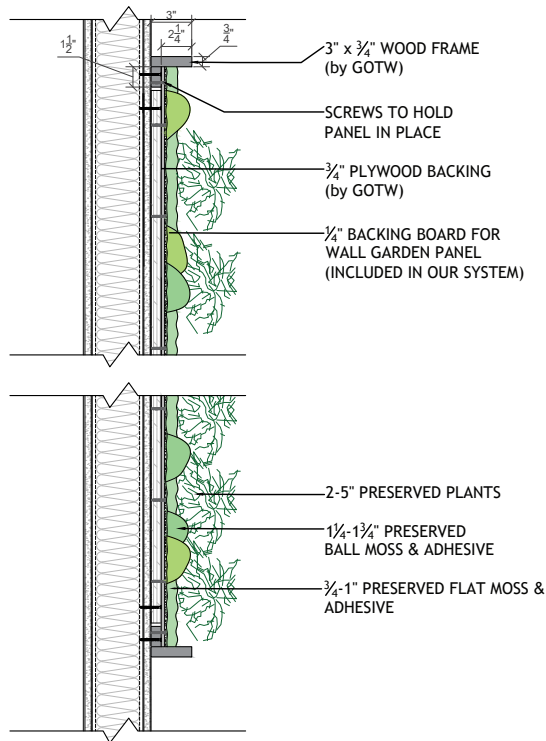
Vertical Garden Specifications

Turn-key Garden Installations

Crafted with Preserved Plants & Installed by GOTW Trained Crew



Gardens with Moss & Foliage (with Flower Foliage)



Tier 2

On-site Framing (Add on) - Typical Section/Plan Details

Copyright © 2025 Garden on the Wall® LLC. All Rights Reserved.

garden  on the wall®
THE ART OF PRESERVED NATURE

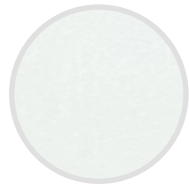
Vertical Garden Specifications

Turn-key Garden Installations

Crafted with Preserved Plants & Installed by GOTW Trained Crew



$\frac{3}{4}$ " thick and 3" deep wood



Satin White
Benjamin Moore OC-151


Rectilinear & Curvilinear



Satin Black
Benjamin Moore CC-654B


Rectilinear & Curvilinear



Standard On-site Framing Options - Vertical Gardens

Copyright © 2025 Garden on the Wall® LLC. All Rights Reserved.

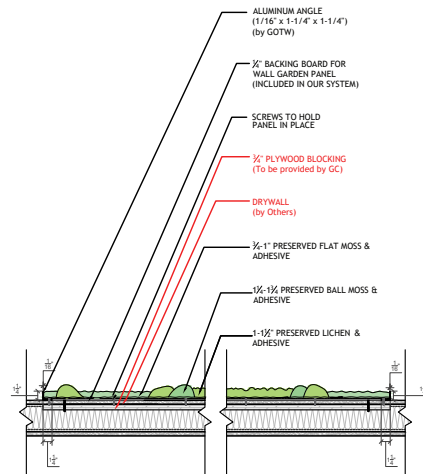
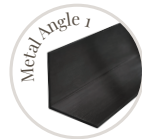
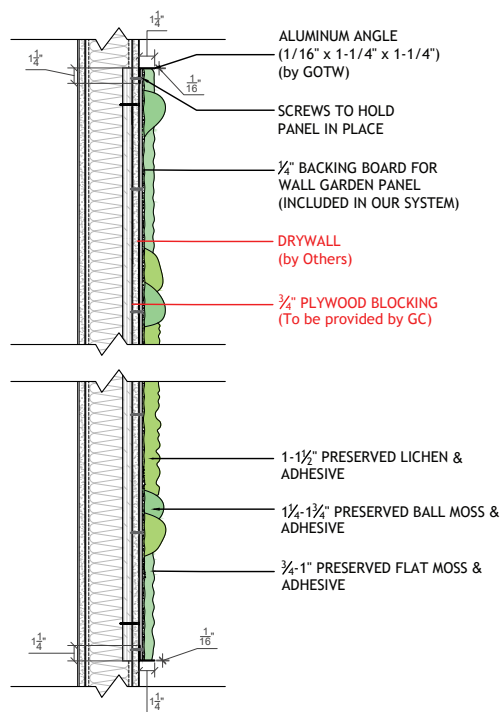
Vertical Garden Specifications

Turn-key Garden Installations

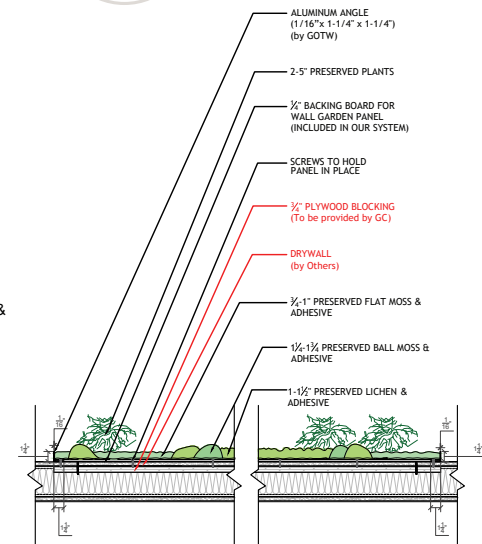
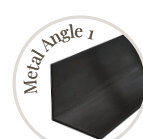
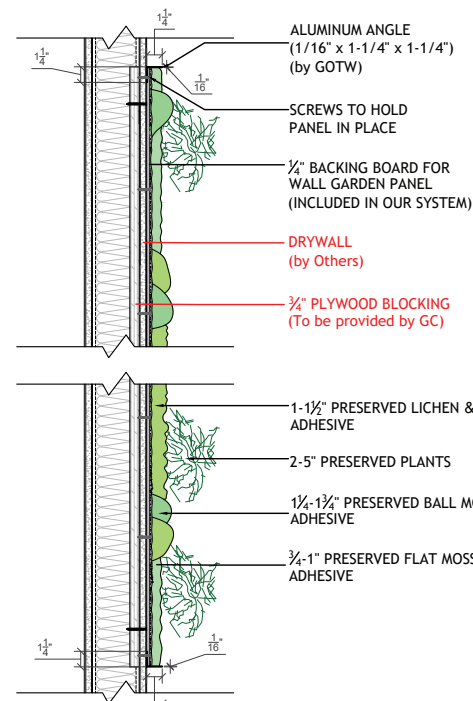
Crafted with Preserved Plants & Installed by GOTW Trained Crew



Gardens with Moss Combinations



Gardens with Moss & Foliage (w/ Flower Foliage)



Tier 1 & Special Tier

Metal Angle 1 (Add on) - Typical Section/Plan Details

Copyright © 2025 Garden on the Wall® LLC. All Rights Reserved.

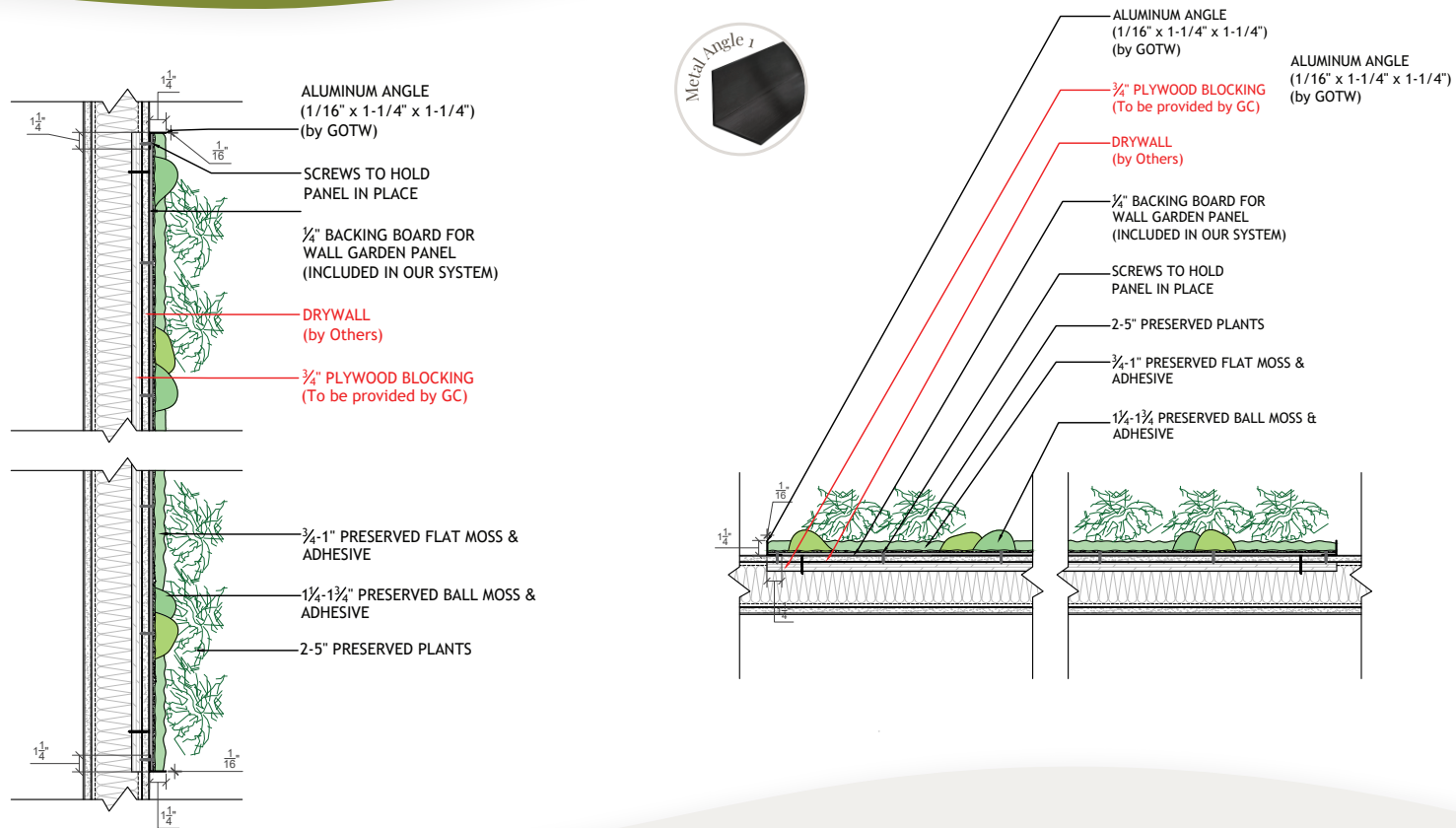
Vertical Garden Specifications

Turn-key Garden Installations

Crafted with Preserved Plants & Installed by GOTW Trained Crew



Gardens with Moss & Foliage (with Flower Foliage)



Tier 2

Metal Angle 1 (Add on) - Typical Section/Plan Details

Copyright © 2025 Garden on the Wall® LLC. All Rights Reserved.

Vertical Garden Specifications

Turn-key Garden Installations

Crafted with Preserved Plants & Installed by GOTW Trained Crew



1/16" x 1-1/4" x 1-1/4"



Metal Angle 1 (Add on) - Typical Section/Plan Details

Copyright © 2025 Garden on the Wall® LLC. All Rights Reserved.

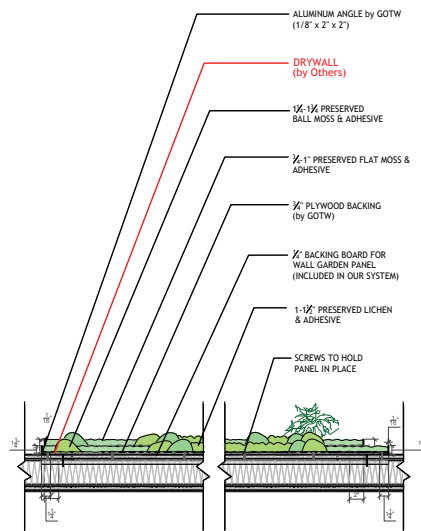
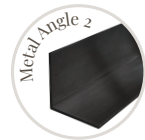
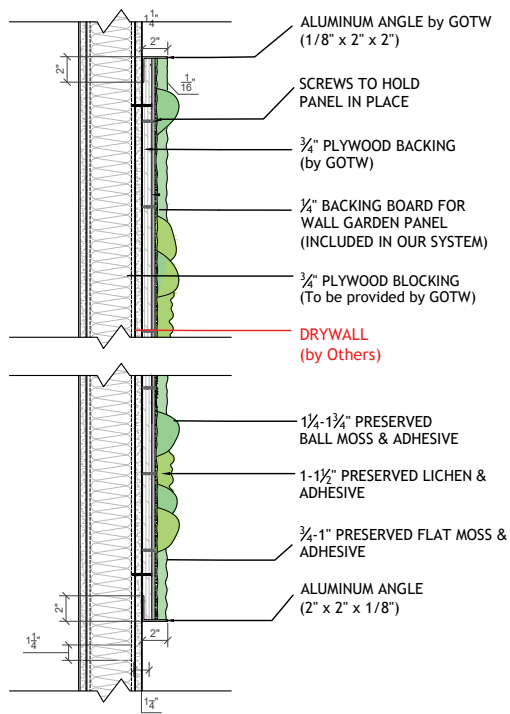
Vertical Garden Specifications

Turn-key Garden Installations

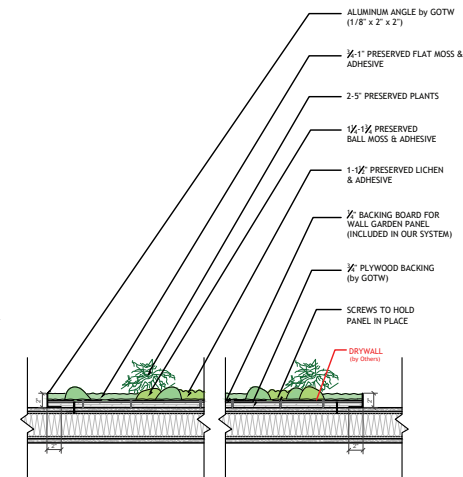
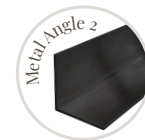
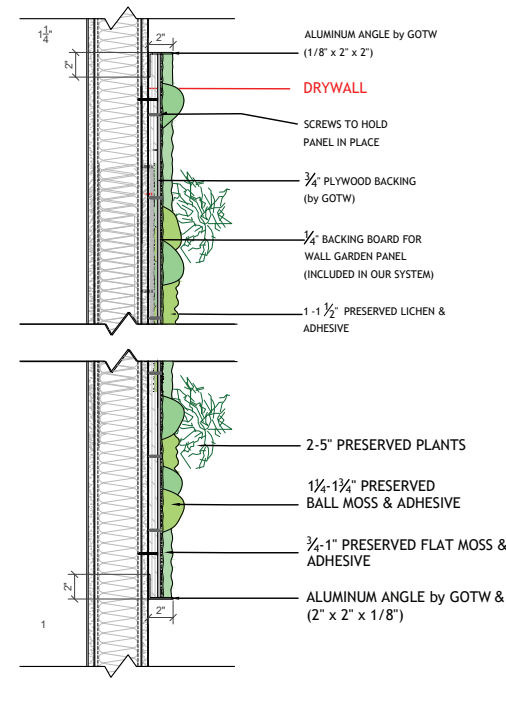
Crafted with Preserved Plants & Installed by GOTW Trained Crew



Gardens with Moss Combinations



Gardens with Moss & Foliage (w/ Flower Foliage)



Tier 1 & Special Tier

Metal Angle 2 (Add on) - Typical Section/Plan Details

Copyright © 2025 Garden on the Wall® LLC. All Rights Reserved.

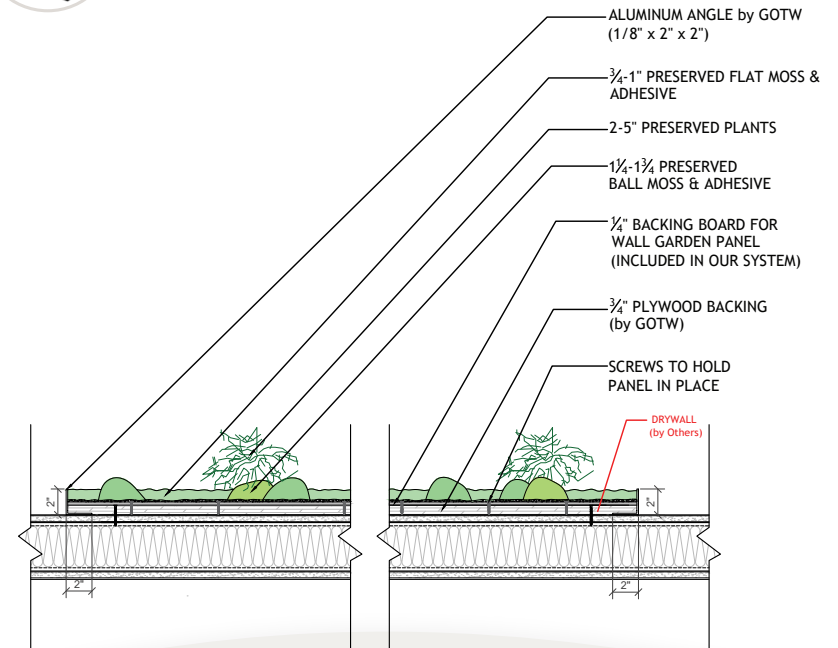
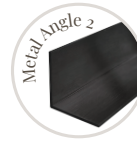
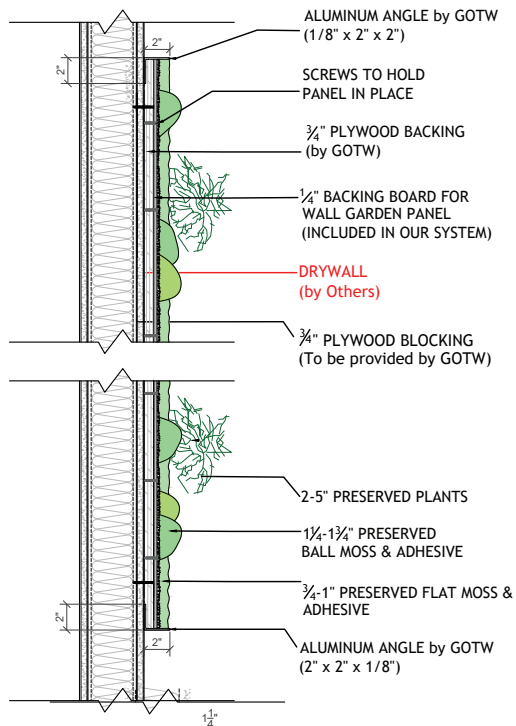
Vertical Garden Specifications

Turn-key Garden Installations

Crafted with Preserved Plants & Installed by GOTW Trained Crew



Gardens with Moss & Foliage (with Flower Foliage)



Tier 2

Metal Angle 2 (Add on) - Typical Section/Plan Details

Copyright © 2025 Garden on the Wall® LLC. All Rights Reserved.

garden
on the wall®

THE ART OF PRESERVED NATURE

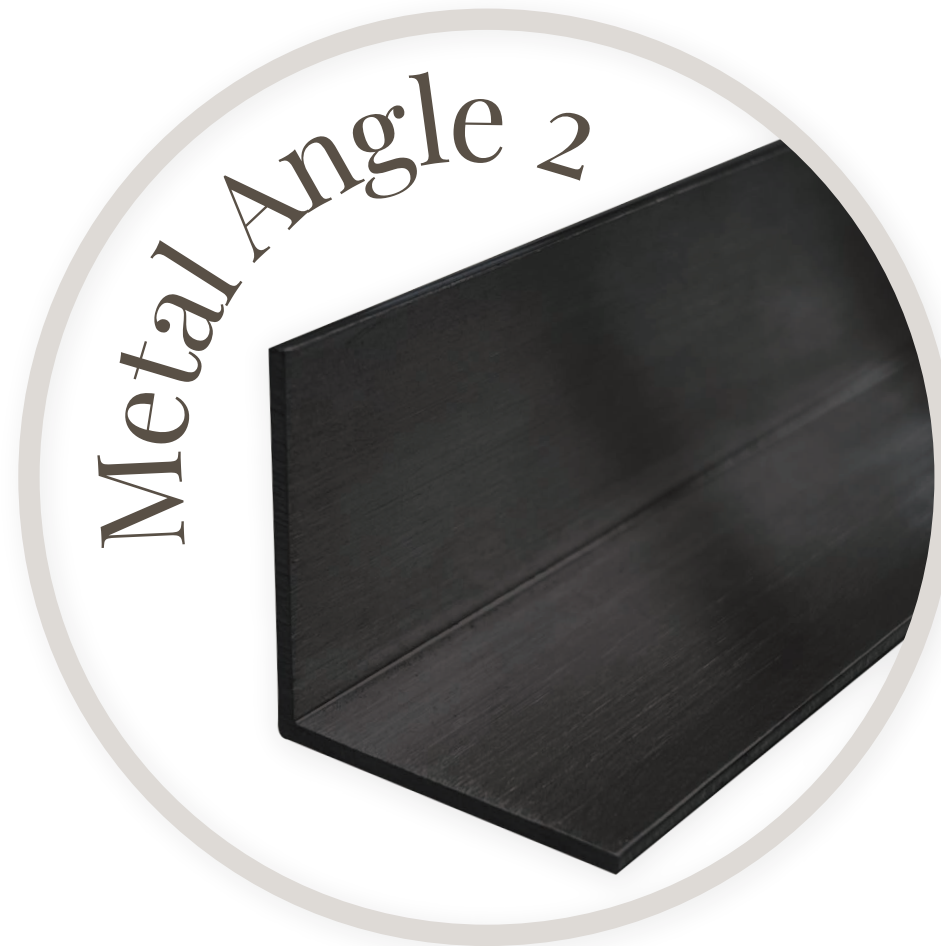
Vertical Garden Specifications

Turn-key Garden Installations

Crafted with Preserved Plants & Installed by GOTW Trained Crew



1/8" x 2" x 2"



Metal Angle 2 (Add on) - Typical Section/Plan Details

Copyright © 2025 Garden on the Wall® LLC. All Rights Reserved.

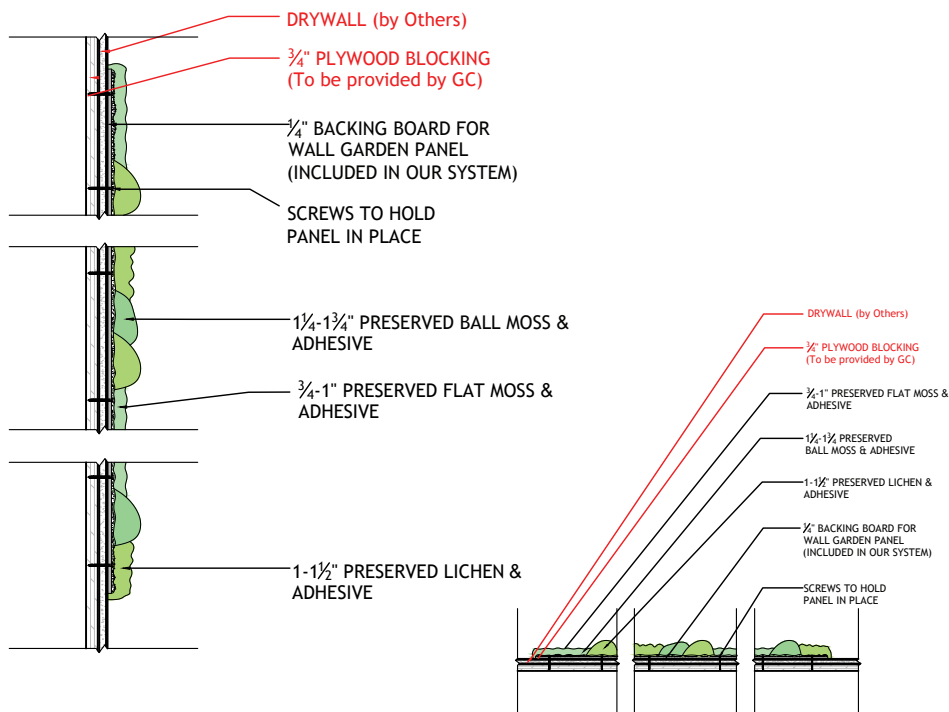
Vertical Garden Specifications

Turn-key Garden Installations

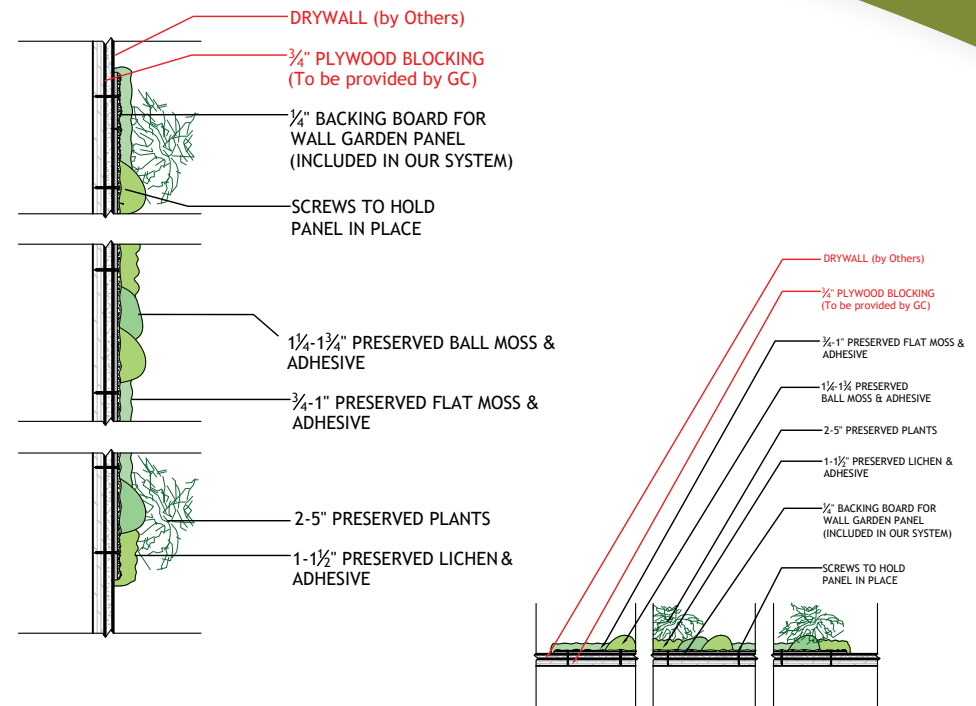
Crafted with Preserved Plants & Installed by GOTW Trained Crew



Gardens with Moss Combinations



Gardens with Moss & Foliage (w/ Flower Foliage)



Tier 1 & Special Tier

Frameless Finish (Add on) - Typical Section/Plan Details

Copyright © 2025 Garden on the Wall® LLC. All Rights Reserved.

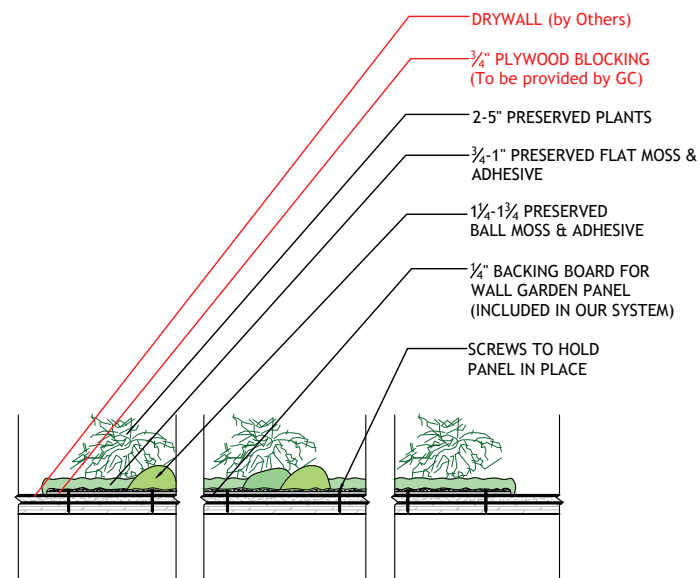
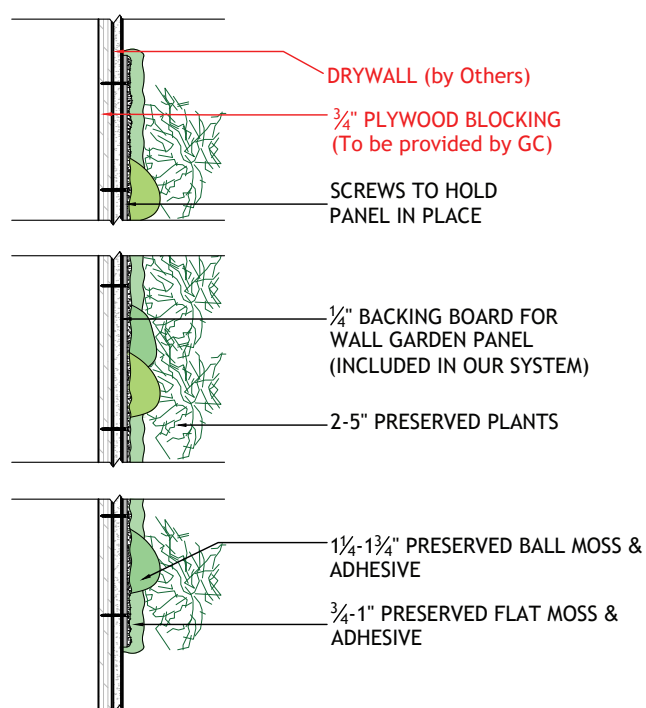
Vertical Garden Specifications

Turn-key Garden Installations

Crafted with Preserved Plants & Installed by GOTW Trained Crew



Gardens with Moss & Foliage (with Flower Foliage)



Tier 2

Frameless Finish (Add on) - Typical Section/Plan Details

Copyright © 2025 Garden on the Wall® LLC. All Rights Reserved.

Vertical Garden Specifications

Turn-key Garden Installations

Crafted with Preserved Plants & Installed by GOTW Trained Crew



frameless finish example



Frameless Finish (Add on) - Typical Section/Plan Details

Copyright © 2025 Garden on the Wall® LLC. All Rights Reserved.