

# Vertical Garden Specifications

## Turnkey Garden Installations

Crafted with Preserved Plants & Installed by GOTW Trained Crew

Declare.

fitwel

Sustainable Minds  
Transparency Catalog

CDPH  
Compliant with VOC  
Standards

hpd  
VERSION 2.3

mindful  
MATERIALS

BREEAM  
VER 4 & 5  
2019

Red List  
Free

WELL

100%  
BIO-BASED

LEED v4.1

ASTM  
INTERNATIONAL  
E-84 Class 1

Third  
Party  
Verified

Model	Gardens with Moss Combinations	Gardens with Foliage with Flower Foliage
Tier 1	Up to 50% Moss coverage over Flat Moss canvas	Up to 50% Foliage/Moss coverage over Flat Moss canvas
Special Tier	Ball Moss or Lichen dominant designs	50 to 75% Foliage coverage over Flat Moss, Ball Moss, or Lichen canvas
Tier 2	N/A	75 to 100% Foliage/Moss coverage over Flat Moss canvas

### Garden Panel Components:

- Preserved Plants:** Preserved Moss, Lichen, Forest, Grass, Fern, Eucalyptus, Flower Foliage & Hydrangea species.
- Backing Board:** ¼" thick maple plywood laminated with formaldehyde-free (NAF-No-Added formaldehyde), soy-based assembly process.
- Adhesive:** A solvent-free adhesive that meets the strict requirements of Indoor Environmental Quality (IEQ).
- Standard Frame (Add on):** ¾" thick, 3" deep AWI premium-grade wood with satin white or satin black finish, includes ¾" plywood backing. (Typical Section details on page 4 & 5).
- Metal Angle 1 (Add on):** 1/16" thick, 1 1/4" x 1 1/4" metal angle with black finish. (Typical Section details on page 7 & 8).
- Metal Angle 2 (Add on):** 1/8" thick, 2" x 2" metal angle with black finish, includes ¾" plywood backing. (Typical Section details on page 10 & 11).
- Frameless Finish (Add on):** Special finish to disguise the edges of the garden panels. (Typical Section details on page 13 & 14).

While all gardens are custom created, it's important to maintain the structural integrity & morphology of the preserved plants used. To maintain the utmost longevity & visual standards, below are the requirements for sizes:

Model	Size/Minimum
Tier 1	12" minimum. For sizes 6" - 12" is priced at Special Tier level. Less than 6" not possible
Special Tier	4" minimum for Lichen and 6" minimum for Flat Moss canvas designs
Tier 2	6" minimum. Preserved plant selection may be limited due to scale

### Weight:

**lbs 1.4 - 1.8/sqft** depending on preserved plants and Model# selection (excludes add on frame weight).

### How to Specify:

- Pattern** is rendered by Garden on the Wall® for approval as a part of the submittal process.
- Color/Plant Species** TBD during Design Rendering as a part of the submittal process.
- Size TBD per CD.** All dimensions will be coordinated with Shop Drawings and will be verified in the field.

### Installation & Edge Details:

- Minimum of 1" depth required** for seamless integration that ensures the edges of our gardens panels are disguised. An integration that conceals the edges of our gardens panels is essential. If a recessed installation isn't possible, an alternative edging solution - such as picture framing, trim, metal angles, or a frameless finish must be used (to be provided by GOTW or others.)
- ¾" Plywood Blocking** to be provided by GC.
- Garden panels are attached** to the vertical surfaces with screws.
- A 7-year warranty certificate** is to be issued by Garden on the Wall® upon completion of the Installation and Touch-up/ Micro-mossing.

### Spec Division:

Division 9 Special Wall Surfaces 097700.

**3\_Part Spec** available upon request.

Copyright © 2025 Garden on the Wall® LLC. All Rights Reserved.

### Sustainability, Health & Safety Credentials with 3<sup>rd</sup> Party Testing:

- Publishing Health Product Declaration HPD (v2.3).
- Red List Free
- Flame Spread and Smoke Index per ASTM E84: Class 1 or A.
- Declare Label
- 100% Bio-based Carbon Content per ASTM 6866.
- Complies with:
- California Department of Public Health (CDPH) VOC standards for both Classroom and Office Scenarios.
- BREEAM Building Standards.
- Healthy Hospitals Initiative (HHI)
- Listed in:
  - Mindful MATERIALS database.
  - Sustainable Minds Transparency Catalog.

### Credit/Points Contribution:

- LEED® v4 and LEED® v4.1
- The WELL v2 Building Standard™
- fitwel®

### NRC/Sound Absorption Test:

**0.44 for all Model# Selections.**

Please contact [info@gardenonthewall.com](mailto:info@gardenonthewall.com) for additional documentation support.



garden  
on the wall®

THE ART OF PRESERVED NATURE

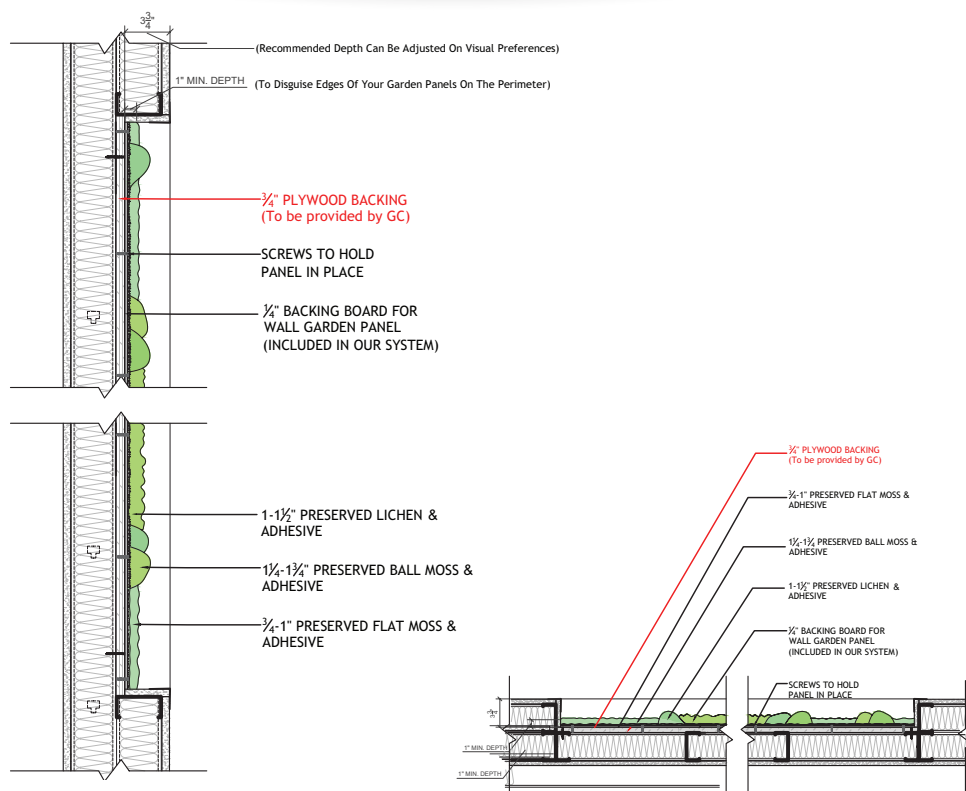
# Vertical Garden Specifications

## Turnkey Garden Installations

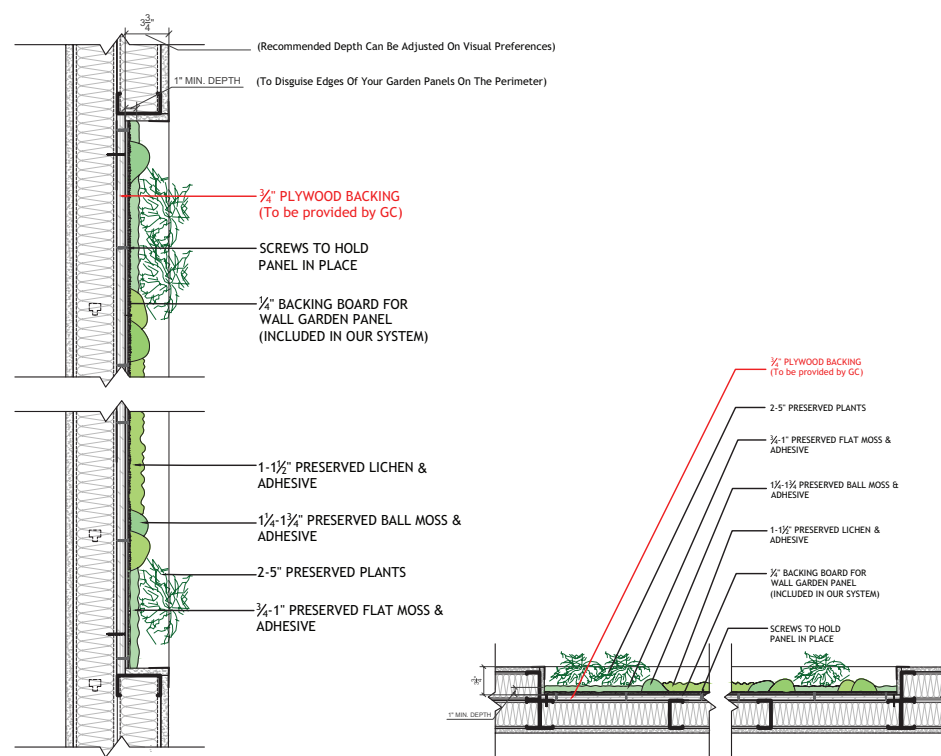
Crafted with Preserved Plants & Installed by GOTW Trained Crew



### Gardens with Moss Combinations



### Gardens with Moss & Foliage (w Flower Foliage)



### Tier 1 & Special Tier

## Recessed Wall Typical Section/Plan Details

Copyright © 2025 Garden on the Wall® LLC. All Rights Reserved.

garden  
on the wall®

THE ART OF PRESERVED NATURE

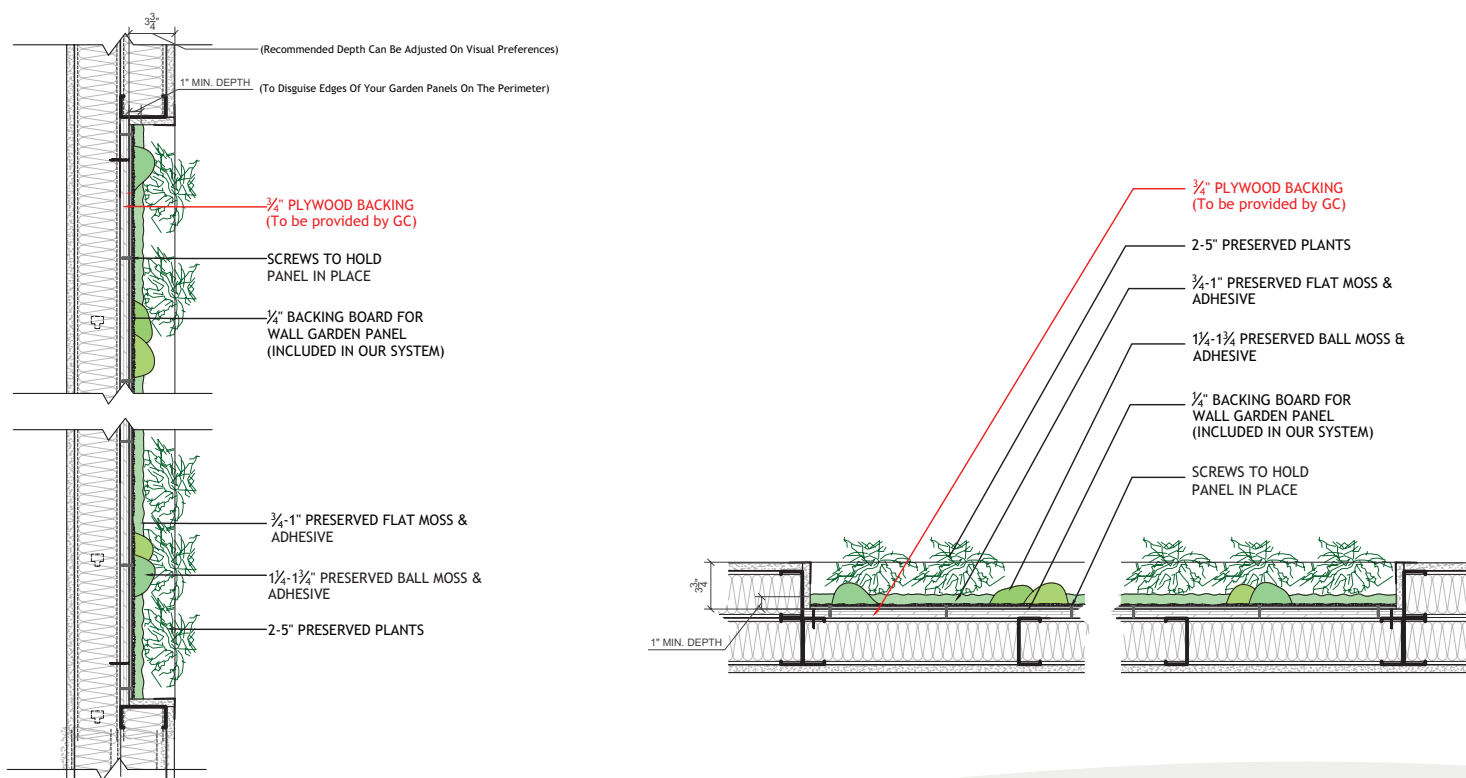
# Vertical Garden Specifications

## Turnkey Garden Installations

Crafted with Preserved Plants & Installed by GOTW Trained Crew



### Gardens with Moss & Foliage (w Flower Foliage)



### Tier 2

## Recessed Wall Typical Section/Plan Details

Copyright © 2025 Garden on the Wall® LLC. All Rights Reserved.

garden  
on the wall®

THE ART OF PRESERVED NATURE

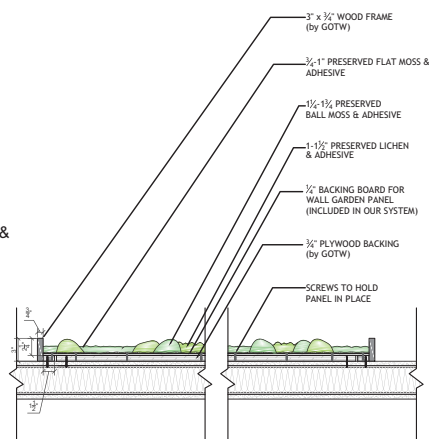
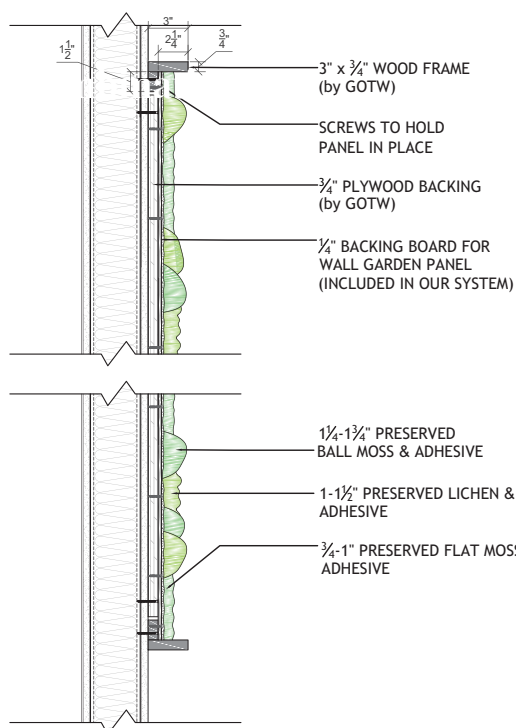
# Vertical Garden Specifications

## Turnkey Garden Installations

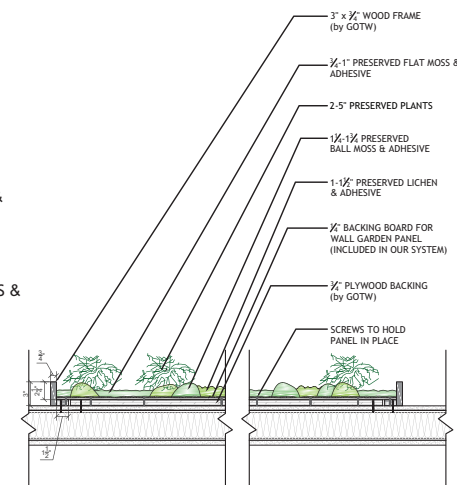
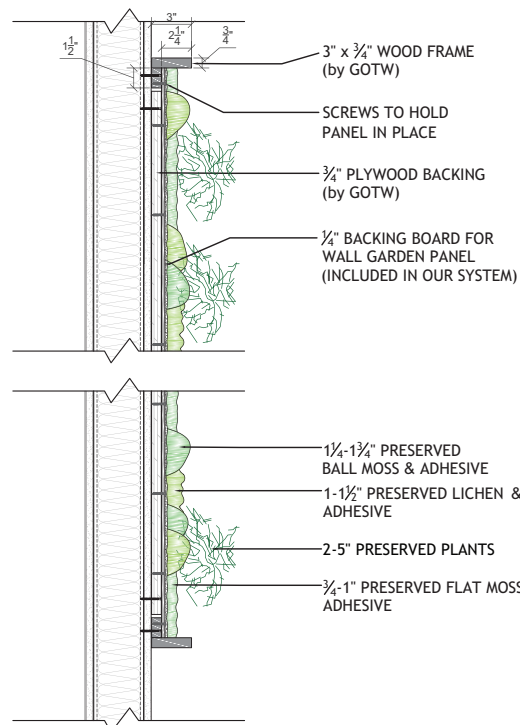
Crafted with Preserved Plants & Installed by GOTW Trained Crew



### Gardens with Moss Combinations



### Gardens with Moss & Foliage (w Flower Foliage)



### Tier 1 & Special Tier

## On-site Framing (Add on) Typical Section/Plan Details

Copyright © 2025 Garden on the Wall® LLC. All Rights Reserved.

garden  
on the wall®

THE ART OF PRESERVED NATURE

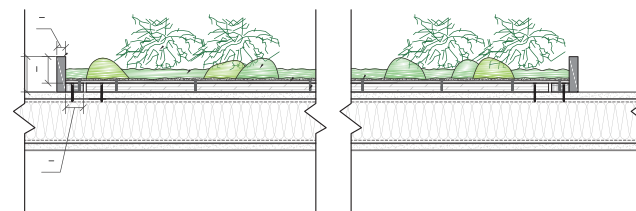
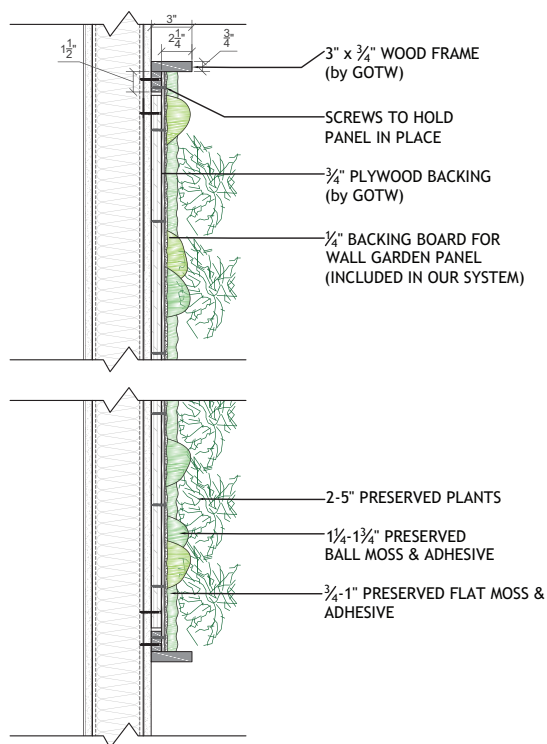
# Vertical Garden Specifications

## Turnkey Garden Installations

Crafted with Preserved Plants & Installed by GOTW Trained Crew



## Gardens with Moss & Foliage (w Flower Foliage)



Tier 2

**On-site Framing (Add on)**  
Typical Section/Plan Details

Copyright © 2025 Garden on the Wall® LLC. All Rights Reserved.

garden  
on the wall®

THE ART OF PRESERVED NATURE



# Vertical Garden Specifications

## Turnkey Garden Installations

Crafted with Preserved Plants & Installed by GOTW Trained Crew



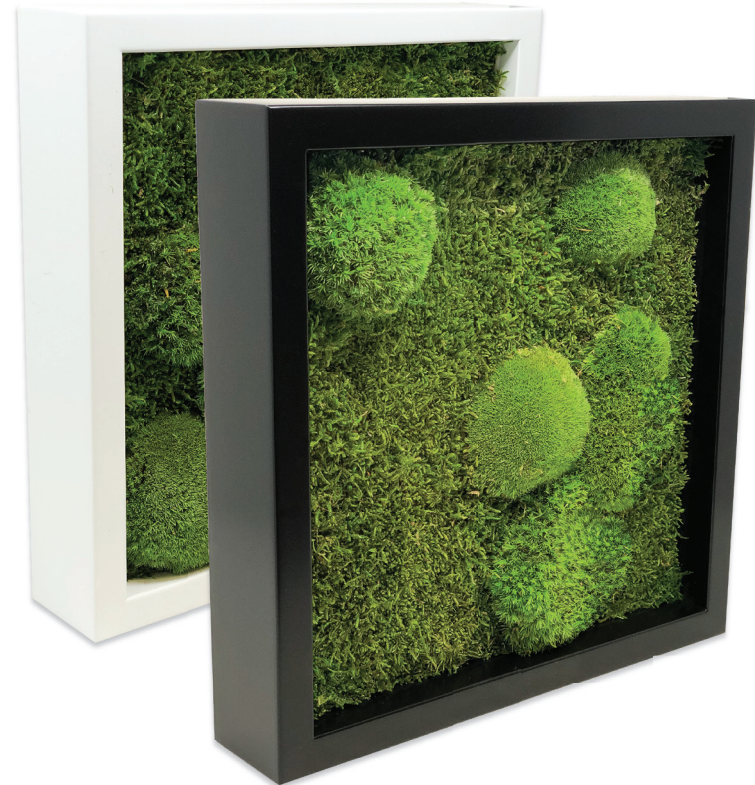
Satin White  
Benjamin Moore OC-151

  
Rectilinear Only



Satin Black  
Benjamin Moore CC-654B

  
Rectilinear Only



$\frac{3}{4}$ " thick and 3" deep wood

**Standard On-site Framing Options (Add on)**  
Typical Section/Plan Details

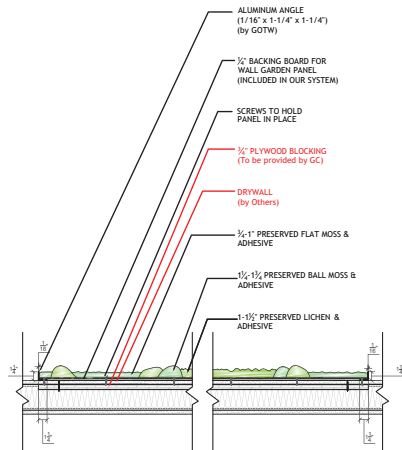
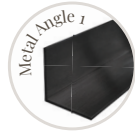
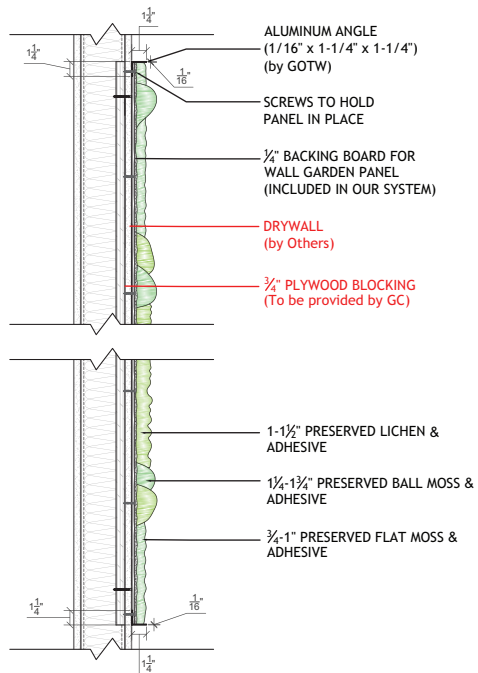
# Vertical Garden Specifications

## Turnkey Garden Installations

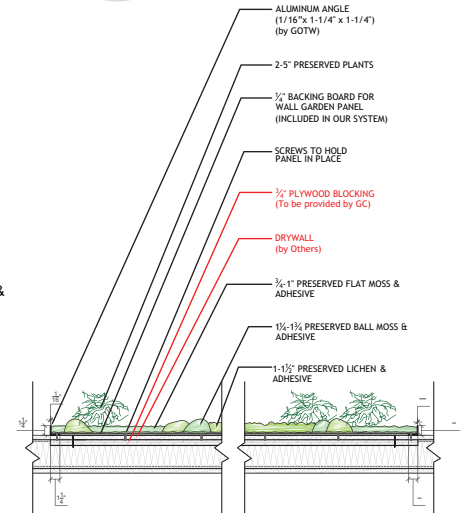
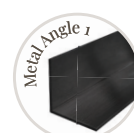
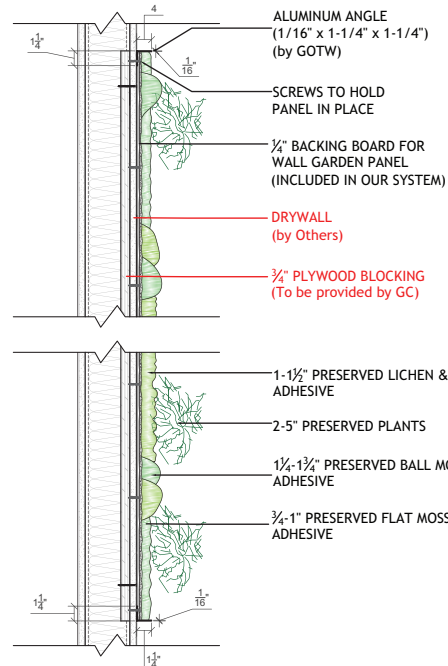
Crafted with Preserved Plants & Installed by GOTW Trained Crew



### Gardens with Moss Combinations



### Gardens with Moss & Foliage (w Flower Foliage)



### Tier 1 & Special Tier

## Metal Angle 1 (Add on) Typical Section/Plan Details

Copyright © 2025 Garden on the Wall® LLC. All Rights Reserved.

garden  
on the wall®

THE ART OF PRESERVED NATURE

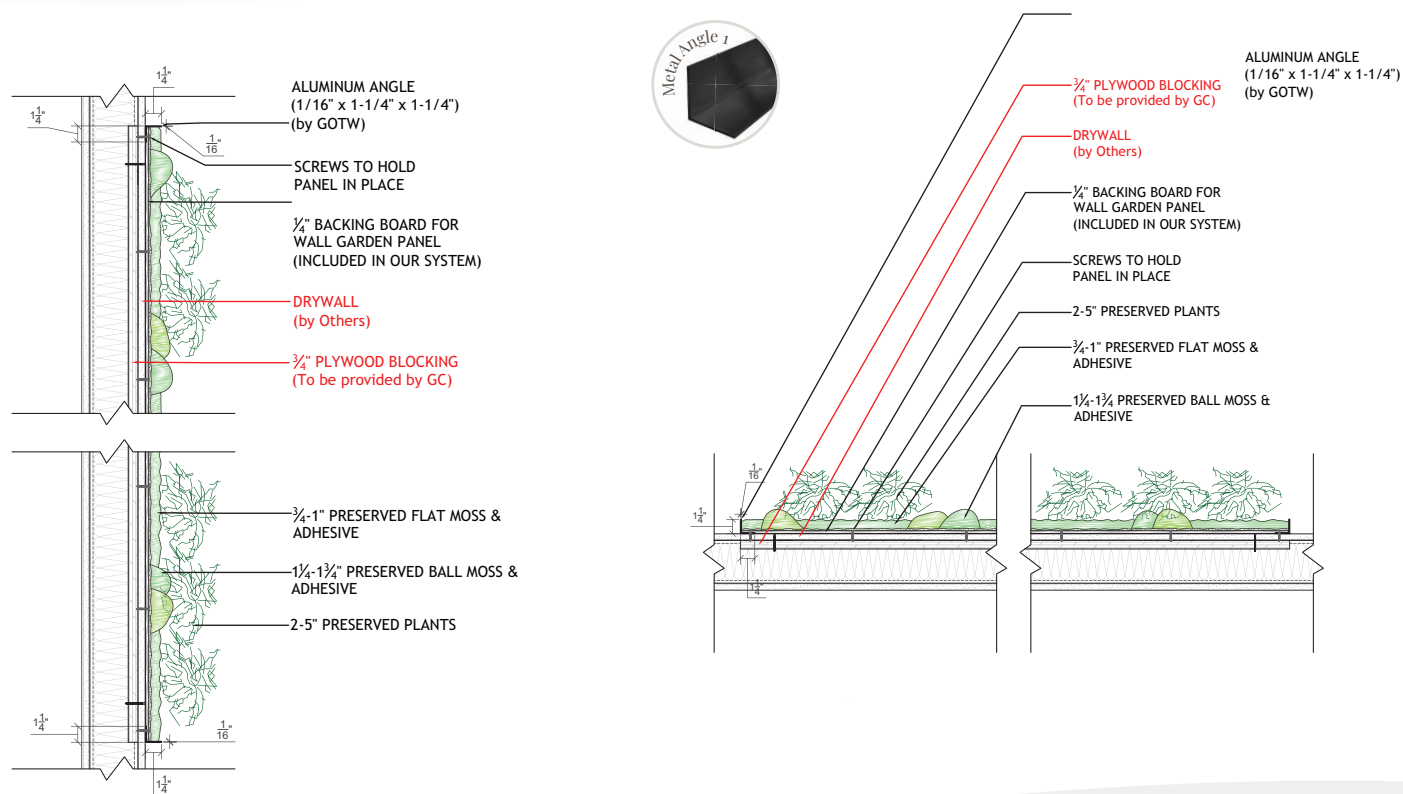
# Vertical Garden Specifications

## Turnkey Garden Installations

Crafted with Preserved Plants & Installed by GOTW Trained Crew



### Gardens with Moss & Foliage (w Flower Foliage)



### Tier 2

## Metal Angle 1 (Add on)

### Typical Section/Plan Details



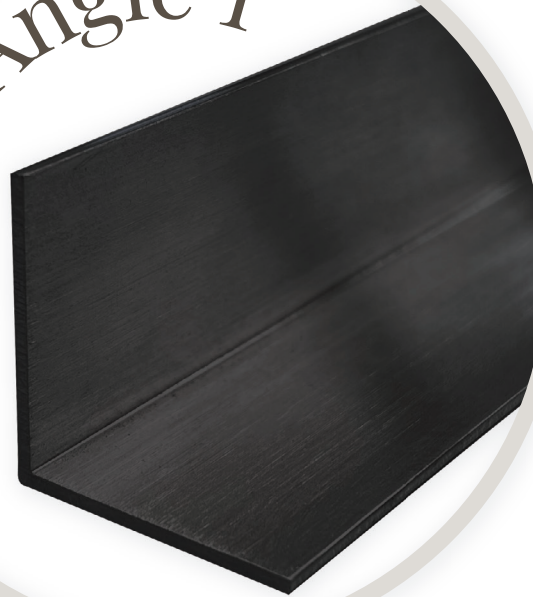
# Vertical Garden Specifications

## Turnkey Garden Installations

Crafted with Preserved Plants & Installed by GOTW Trained Crew



Metal Angle 1



$\frac{1}{16}" \times 1\frac{1}{4}" \times 1\frac{1}{4}"$

**Metal Angle 1 (Add on)**  
Typical Section/Plan Details

Copyright © 2025 Garden on the Wall® LLC. All Rights Reserved.

garden  
on the wall®

THE ART OF PRESERVED NATURE

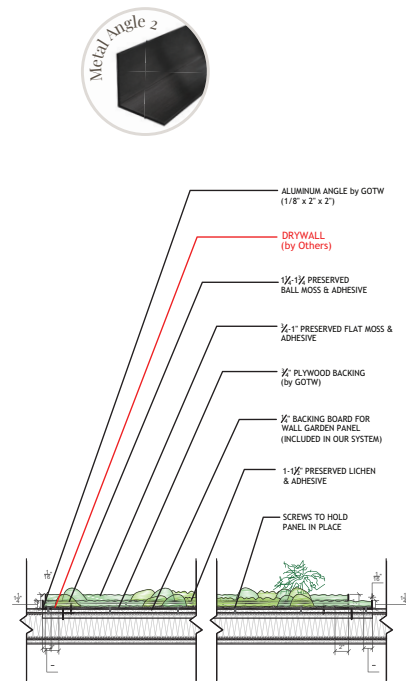
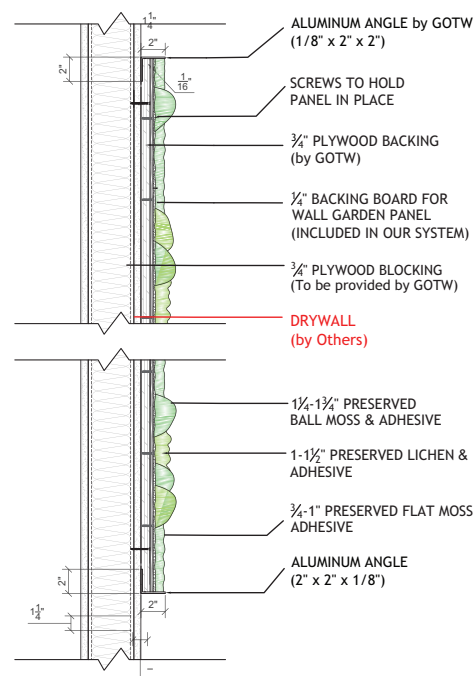
# Vertical Garden Specifications

## Turnkey Garden Installations

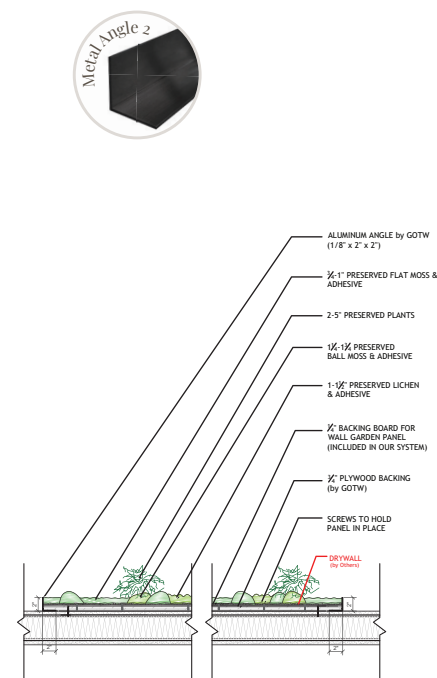
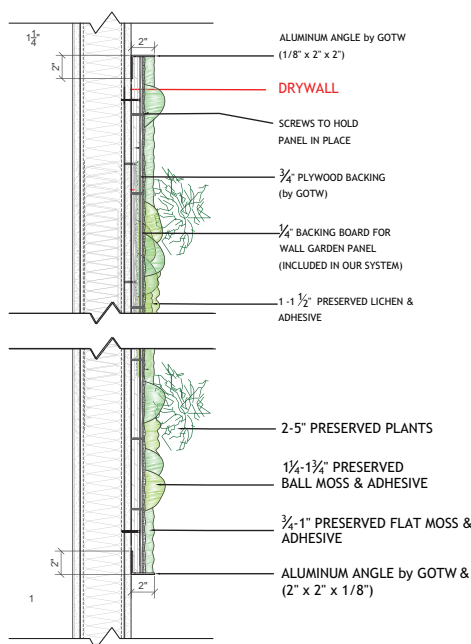
Crafted with Preserved Plants & Installed by GOTW Trained Crew



### Gardens with Moss Combinations



### Gardens with Moss & Foliage (w Flower Foliage)



### Tier 1 & Special Tier

## Metal Angle 2 (Add on) Typical Section/Plan Details

Copyright © 2025 Garden on the Wall® LLC. All Rights Reserved.

garden  
on the wall®

THE ART OF PRESERVED NATURE

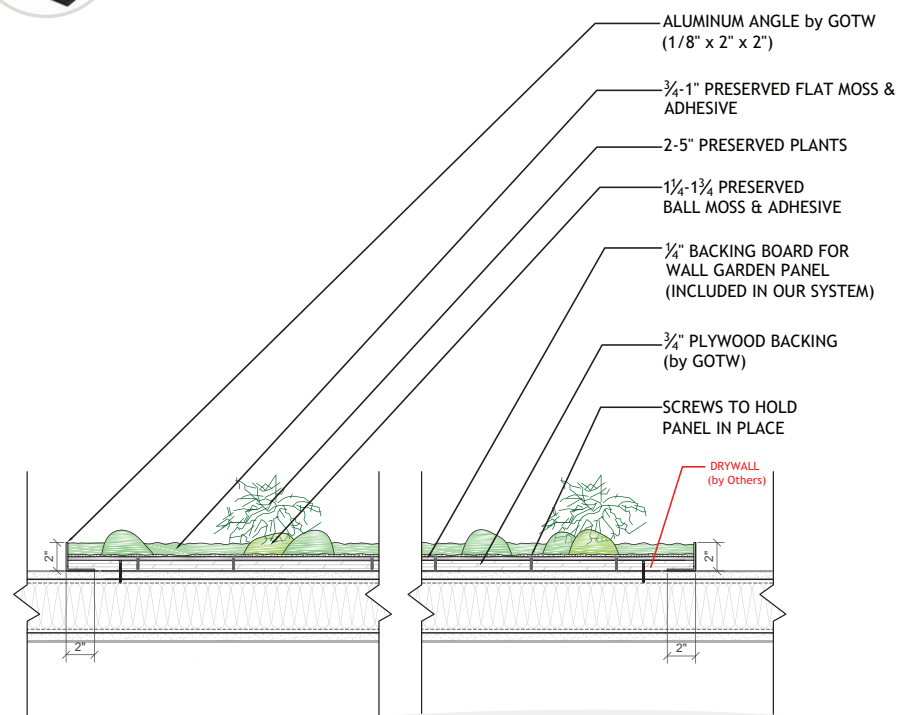
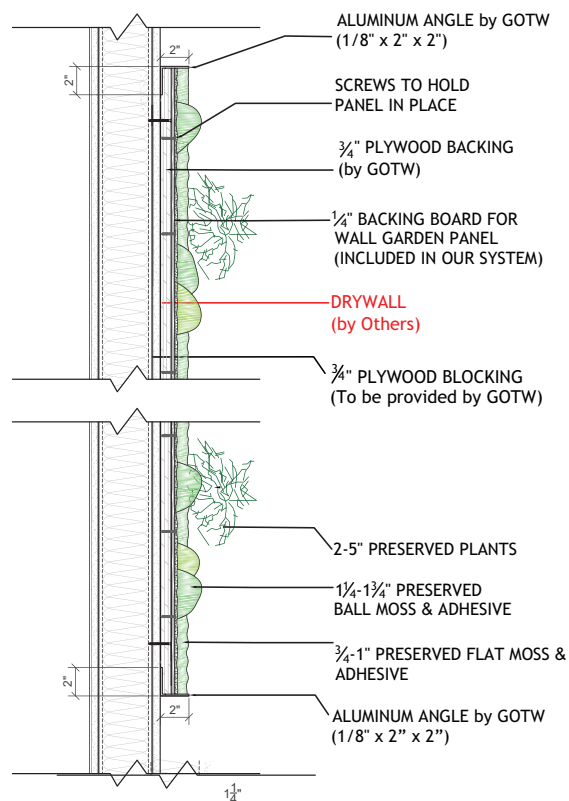
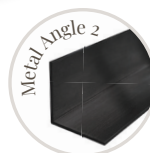
# Vertical Garden Specifications

## Turnkey Garden Installations

Crafted with Preserved Plants & Installed by GOTW Trained Crew



## Gardens with Moss & Foliage (w Flower Foliage)



## Tier 2

## Metal Angle 2 (Add on) Typical Section/Plan Details

Copyright © 2025 Garden on the Wall® LLC. All Rights Reserved.

garden  
on the wall®

THE ART OF PRESERVED NATURE

# Vertical Garden Specifications

## Turnkey Garden Installations

Crafted with Preserved Plants & Installed by GOTW Trained Crew



Metal Angle 2



$\frac{1}{8}$ " x 2" x 2"

### Metal Angle 2 (Add on) Typical Section/Plan Details

Copyright © 2025 Garden on the Wall® LLC. All Rights Reserved.

garden  
on the wall®

THE ART OF PRESERVED NATURE

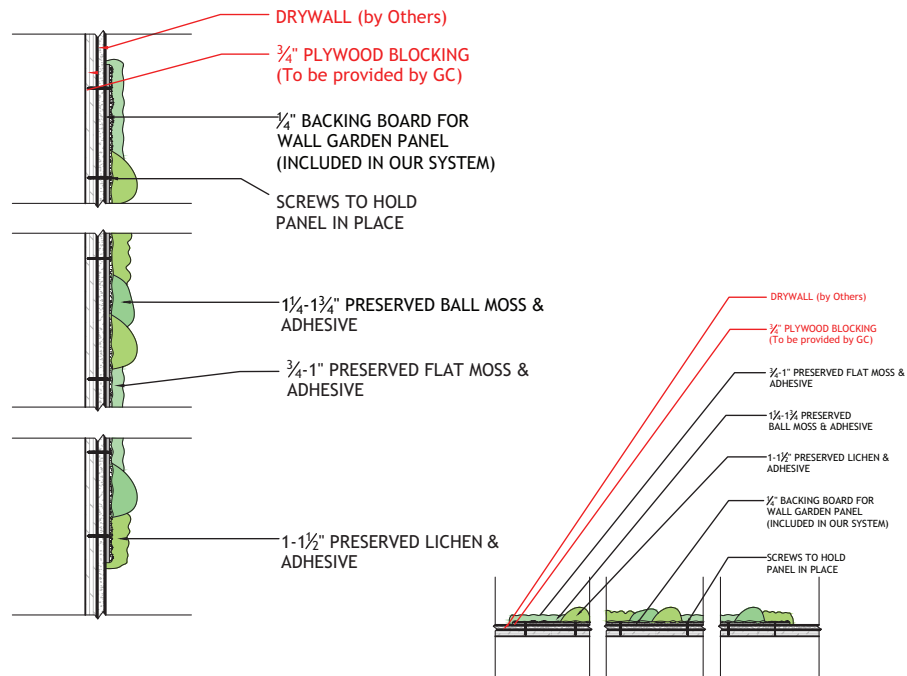
# Vertical Garden Specifications

## Turnkey Garden Installations

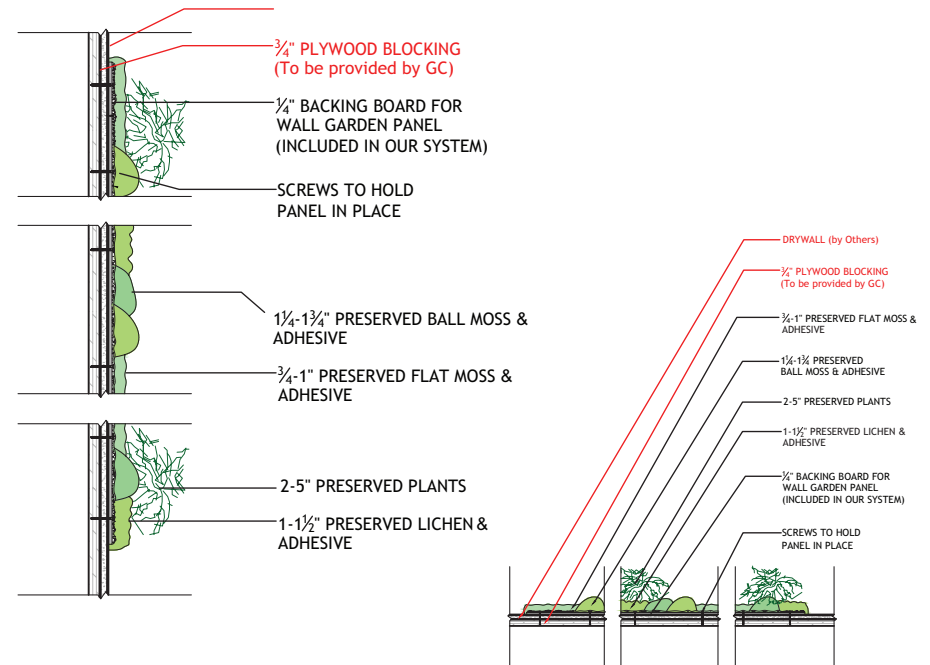
Crafted with Preserved Plants & Installed by GOTW Trained Crew



### Gardens with Moss Combinations



### Gardens with Moss & Foliage (w Flower Foliage)



### Tier 1 & Special Tier

## Frameless Finish (Add on) Typical Section/Plan Details

Copyright © 2025 Garden on the Wall® LLC. All Rights Reserved.

garden  
on the wall®

THE ART OF PRESERVED NATURE



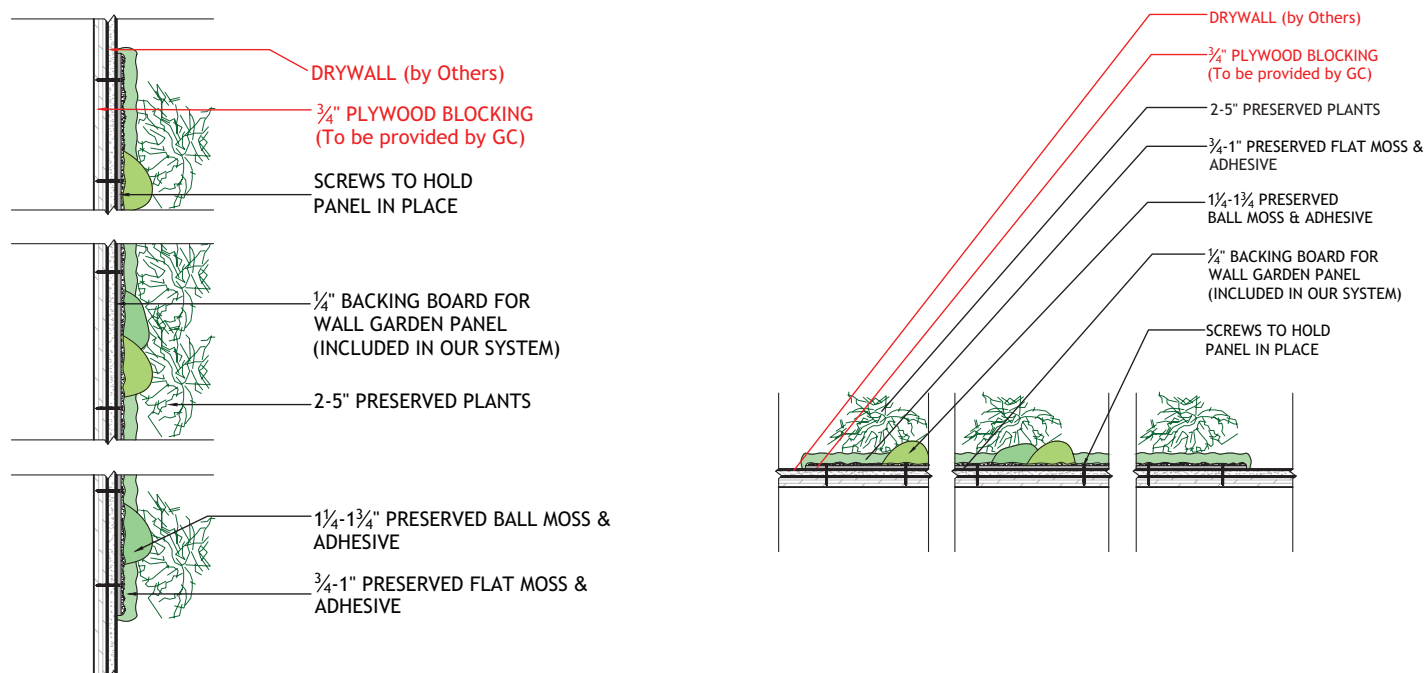
# Vertical Garden Specifications

## Turnkey Garden Installations

Crafted with Preserved Plants & Installed by GOTW Trained Crew



### Gardens with Moss & Foliage (w Flower Foliage)



Tier 2

**Frameless Finish (Add on)**  
Typical Section/Plan Details

Copyright © 2025 Garden on the Wall® LLC. All Rights Reserved.

garden  
on the wall®

THE ART OF PRESERVED NATURE



## Frameless Finish Examples

**Frameless Finish (Add on)**  
Typical Section/Plan Details