



# Vindlér™ Constellation

## Revolutionary Global Geolocated RF Data

SNC's Vindlér™ is a space-based collection service designed to detect and geolocate specific objects from low-Earth orbit (LEO) by targeting radio frequency (RF) emissions across various bands, including VHF, UHF, L, S, X and Ku/Ka bands.

The collection-as-a-service model leverages Vindlér satellites to collect, process and geolocate RF signals from various sources such as maritime vessels, aircraft and communications systems.

# 14

14 simultaneous collections



Everywhere on earth

# 7

7 Bands spanning 30GHz



Constellation optimized for performance, coverage and revisit



1 km geolocation accuracy

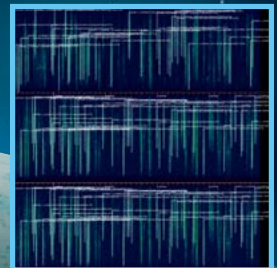
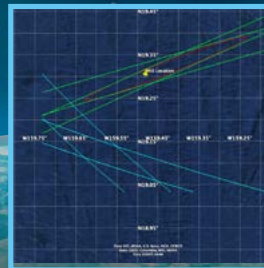
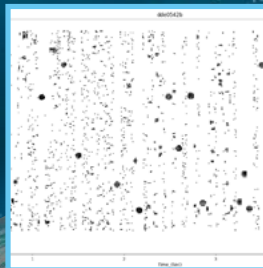
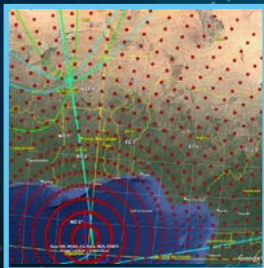
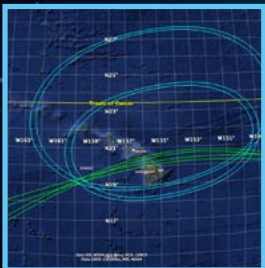


On-orbit signal processing



## Commercial RF Data

Combining a broad RF collection spectrum with high collection capacity enables new insights in support of national security, disaster response and commercial activity.



# Muon Space

Muon Space is the Space Mission partner designing, building and operating SNC's Vindlér Constellation.

# Vindlér Specifications

|                                     |  |  |  |
|-------------------------------------|--|--|--|
| <b>Orbit Altitude</b>               | 550 km   | <b>Frequency Range</b>                       | 120 MHz - 31 GHz   |
| <b>Geolocation Accuracy</b>         | 1 km @ nadir   | <b>Observation/ collection bandwidth</b>     | 2 GHz / 200 MHz across 14 simultaneous channels                                  |
| <b>Total Capacity of the System</b> | 1.5 TB/day   | <b>Revisit Rate of Initial Constellation</b> | Anywhere on earth every 1-3 days   |
| <b>Signals</b>                      | Handset radios, GNSS jammers, satellite phones, AIS, ADS-B, radars, and more | <b>On-orbit signal processing</b>            | Onboard containerized applications can be executed based on mission requirements |

## Products/Applications

Vindlér data products are used by government agencies, commercial entities, and non-profits to monitor illicit activities such as illegal fishing, illegal mining, smuggling, and jamming operations. The Vindlér capability enables applications in defense, intelligence, maritime domain awareness, and emergency response by providing insights into global RF activity. Examples of emitters detected with Vindlér include:

- Push-to-talk radios
- Marine radars
- Satellite phones
- GNSS jammers
- V-sat terminals
- Maritime AIS
- Aviation Mode A/C
- ADS-B

Visit SNC at Booth 413 to learn more about the Vindlér constellation.



SNC  
3076 Centreville Rd., Suite 114  
Herndon, VA 20171  
www.sncorp.com  
mst@sncorp.com



Mission Optimized  
Constellations

info@muonspace.com

© 2025 Muon Space, Inc.  
2250 Charleston Road, Mountain View,  
California 94043  
www.MuonSpace.com