



**SPCA** HAMILTON/  
BURLINGTON

# BUILDING A PET-FIRST FUTURE

Impact Report 2025-2026

**SPECIAL  
EDITION!**



**Unleash**  
with **Love**  
My **SPCA**



# A LETTER FROM OUR BOARD CHAIR

I am pleased to reflect on another year of meaningful progress for the Hamilton/Burlington SPCA. Our community's animal welfare needs have evolved and significantly increased. In response, **we have broadened our programs and services** to ensure we are meeting those needs with compassion and innovation.

From expanded outreach initiatives such as our Pet Pantry which served over **3.6M pet meals in 2025** to our outreach wellness programs and our renewed commitment to proactive education, our team continues to adapt and grow, always keeping the wellbeing of animals and their human companions at the centre of our mission.

**We are well underway with a significant fundraising campaign to support the construction of a new best-in-its-class animal welfare hub.**

Our current facility has served us well, but it no longer meets the demands of our expanding operations. The new hub will offer enhanced functionality, increased

space, and improved resources, enabling us to provide even better care and support to animals in need and the families who love them.

We will have the added benefit of repurposing our existing facility once the new facility is built, allowing us to provide more opportunities and capacity to our regional and provincial partners.

Throughout these exciting changes, the Board, our employees and our volunteers remain deeply committed to the sustainability of our organization. Balancing expansion with stewardship, we are carefully planning for the future to ensure our growth is responsible and enduring.

From years of saving to help us prepare for this moment, to investing in sustainable practices and maintaining strong community relationships, **we are building a foundation that will support animal welfare in our region for many years to come.**



To our employees, volunteers, donors, partner organizations, and everyone who contributes to our mission—thank you.

Your dedication inspires us to dream bigger, act bolder, and achieve greater impact for the animals and communities we serve.

**Deb Brown**  
Chair, Board of Directors

# A MESSAGE FROM OUR PRESIDENT & CEO

## To Our Donors, Volunteers, Community Partners, and Friends

What you hold in your hands is not just a report — it is a love letter to everyone who has given time, generosity, or heart to the HBSPCA. **Every story here exists because of you:** because a donor believed, a volunteer showed up, or a family chose to adopt. This impact belongs to all of us.

## A Historic Milestone: Humane Canada Accreditation

I am especially proud to share that the HBSPCA earned accreditation from Humane Canada — one of only a few organizations in Canada to do so. This rigorous, independent recognition confirms that **we meet the highest standards in animal care, governance, transparency, and community impact.** It tells you, our supporters, that your trust is well-placed and your contributions are stewarded with excellence. This badge of honour belongs to every person who helped us earn it.

## Your Impact & Our Boldest Vision Yet

Your support powered expanded outreach through our Pet Pantry, deepened Pet Health Outreach Clinics, and enabled thousands of animals to receive expert veterinary care. We strengthened our role with Ontario's Provincial Animal Welfare Services and reached a landmark long-term agreement with the City of Hamilton. **Through the Unleash Love campaign, we are creating Canada's first Animal Wellness Hub** — a centre for affordable veterinary care, walk-in clinics, expanded shelter capacity, community education, and training for future veterinary professionals. This is no longer a dream — it is a promise.



## The Heart of the HBSPCA: You

To our volunteers — you are the soul of this organization, showing up day after day for every animal. To our staff and medical team — your skill and compassion make this work possible. To our donors — every gift is an act of faith, and we honour that trust. And to our partners, the City of Hamilton, corporate supporters, and rescue allies — thank you for proving that animal welfare strengthens our entire community.

Nearly 140 years ago, the HBSPCA was founded on the belief that progress for animals is progress for humanity. Today, accredited to the nation's highest standard and preparing to build this country's first Animal Wellness Hub, that idea has never been more alive. **We are reaching for the stars — and we want you reaching with us. From the bottom of my heart, thank you. Let's keep building. Together.**

**John Gerrard**  
CEO, Hamilton/Burlington SPCA

# HUMANE CANADA ACCREDITATION

## One of Only Three in Canada

The Hamilton/Burlington SPCA is proud to be **among just three animal welfare organizations in Canada to achieve Humane Canada Accreditation** — a rigorous, independent evaluation of animal welfare, governance, transparency, and accountability.

This five-year accreditation confirms that every aspect of our work — from shelter operations to community programs — meets national, evidence-based standards. **It reflects not only the care we provide for animals but also the ethical and transparent way we operate**, building trust with our community and supporters.

“Being one of only three organizations in Canada to earn Humane Canada Accreditation shows our community that supporting the HBSPCA means supporting animal care done right — with accountability, compassion, and expertise,” says John Gerrard, President & CEO.

**Achieving this milestone is a tribute to the dedication of our staff, volunteers, and supporters**, whose compassion and expertise make high-quality care possible.

Humane Canada Accreditation reinforces our ongoing focus on improving programs, advancing best practices, and leading the future of animal welfare in Canada.



# PET FIRST PHILOSOPHY

*We're for pets.*

Some people protect forests or adopt highways. Others rescue whales or save the oceans.

*We're for pets.*

The big ones and the little ones. The sunbathers and the mess makers. The jumpers and the thumpers. The purebreds and pure delights. We're for rescues and rehabs. For the lonely, the lost and the left behind. We're for education and advocacy. For the kind of care that turns heads and wags tails.

Because progress for animals is progress for humanity. This was our founding idea nearly two centuries ago. And it's what Pet First is all about: Unleashing a world where animals and humans bring out the best in each other.

Every cat. Every dog. Every life.

**ALWAYS PET FIRST.**

## STRATEGIC PLAN 2025-2028

Imperatives



### ELEVATE CARE

Strive to provide every companion animal in need with access to better care.



### BUILD CONNECTIONS

Inspire, mobilize and educate our community to be the voice for animals.



### STEWARD CAPITAL

Secure, steward and deploy financial capital to drive impact.

Drivers

- ➔ Build new campus to increase access to enhanced care.
- ➔ Embed community wellness to reach more vulnerable animals.
- ➔ Improve and expand the current shelter experience for animals.
- ➔ Reimagine the delivery of compassionate hospital care.

- ➔ Re-establish brand loyalty through community presence and partnerships.
- ➔ Educate humans to create a compassionate community.
- ➔ Advocate for the rescue and protection of animals.

- ➔ Modernize and secure operational infrastructure.
- ➔ Prioritize financial health through efficient asset management.
- ➔ Steward a diverse revenue portfolio to reduce operational risk.

# BUILDING CANADA'S FIRST PET-FIRST ANIMAL WELFARE HUB

## The Crisis Ahead

Across Canada, animal welfare organizations are facing a growing capacity challenge. More animals are entering shelters, veterinary services are becoming less accessible, and rising costs are forcing many families to make difficult decisions about the pets they love. These pressures are already being felt in Hamilton–Burlington. **Our current shelter and hospital are operating beyond their original design, with nearly every available space**

**repurposed for animal care just to keep pace with demand.** These challenges have contributed to longer wait times for essential services, including spay/neuter and intake, and have placed added strain on staff and volunteer resources.

**Unleash Love is our response** — a bold plan to build Canada's first Pet-First Animal Welfare Campus to ensure our community has the capacity to care for animals today and for generations to come.



## The Solution: Shelter

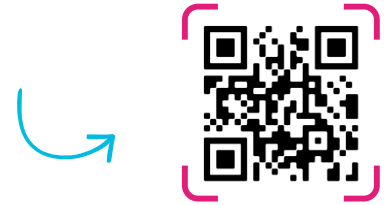
We are reimagining animal sheltering by prioritizing outdoor space, modern housing, and more efficient pathways to adoption. **The new shelter will more than triple our current housing capacity** and offer intentionally designed low-stress environments. From **canine condos and feline rooms with catios** to thoughtfully designed spaces with natural light and outdoor access, every element is intended to help animals heal, socialize, and move more quickly into loving homes.

## The Solution: Veterinary Access

**We're creating Canada's first non-profit walk-in veterinary clinic and full-service community hospital**, making high-quality care accessible. The hospital will combine urgent care, surgery, diagnostics, and teaching under one roof, serving both shelter and community animals. By delivering **affordable, compassionate care while training the next generation of veterinarians**, we are removing barriers to access and expanding our capacity to treat and heal more animals than ever.



# BRINGING OUR VISION TO LIFE



## Where Passion Meets Action

Volunteers are the heartbeat of the HBSPCA, **delivering over 90% of daily care and operations.** The new Hub will strengthen this foundation with dedicated training, collaboration, and recognition spaces, empowering community

members to work confidently alongside staff. From adoptions and animal care to outreach and administration, volunteers lead with skill, compassion, and pride—helping build Canada’s largest volunteer-powered animal welfare movement.

## Redefining Compassionate Goodbyes

The End-of-Life Centre provides private, dignified spaces for families to say goodbye, supported by on-site cremation and aftercare. With four farewell rooms and a peaceful lobby, more pets and **families can access affordable, empathetic care during life’s most difficult moments.**



## Shaping Compassionate Leaders

We will empower children, youth, and future veterinary professionals to develop empathy, responsibility, and humane care. Through camps, workshops, and school partnerships, students gain practical skills and hands-on experience. **As Canada’s first shelter-medicine teaching hospital, the new Hub offers classrooms, labs, and observation spaces** where learners engage directly in real-world animal care, helping build the next generation of compassionate leaders.

# ANIMAL. WELFARE. HUB.

## THREE WORDS, MASSIVE IMPACT



### Putting Pets First, Every Step of the Way

Every decision, every space and every detail of the new campus starts with pets. **Designed through a Pet-First lens, the Hub prioritizes animals health, safety, and wellbeing**—from calming environments to enriched outdoor spaces and clean-air exchanges. We are redefining what “animal welfare” means. Beyond adoptions and spay/neuter services, this

integrated campus will provide physiotherapy, behaviour support, clinics, grooming, and healing spaces—all designed to meet the needs of pets throughout their lives. **One location, one destination. Streamlined care with access for all families, regardless of financial or social barriers.** As Canada’s first shelter-

medicine teaching hospital, the campus will train the next generation of veterinarians and advance innovative practices—ensuring every pet benefits from forward-thinking care. **Together, we’re shaping a future where pets thrive, families are supported, and every act of compassion creates a lasting impact.**

There’s So Much More to Explore



# BE PART OF THE CHANGE



## Together, We Unleash Love

The Hamilton/Burlington SPCA's Unleash Love Animal Welfare Hub is a **once-in-a-generation opportunity** to revolutionize animal care and community health in the region. By **bringing shelter, veterinary, education and outreach services into a 55,000 ft<sup>2</sup> hub**, HBSPCA will triple animal capacity, provide accessible healthcare and create vibrant community spaces for people and pets.

You're invited to **join HBSPCA in unleashing love**—building a future where every animal has access to the care they need.



## Please Contact Brad Grabell:

- ✉ [unleashlove@hbspca.com](mailto:unleashlove@hbspca.com)
- ☎ (365) 336-7154
- 🌐 [unleashlove.ca](http://unleashlove.ca)

Book a Meeting



# WOVEN INTO EVERY PART OF THE HBSPCA



- ▶ **88,770**  
Volunteer Hours Contributed
- ▶ **28,941+**  
Hours Spent Fostering Animals
- ▶ **7,300**  
Hours Volunteered Cleaning Kennels
- ▶ **2,600**  
Hours Spent Assisting with Animal Surgeries
- ▶ **2,709**  
Hours Volunteered in Dog Walking & Days Out

## Powered By Volunteers

From supporting our hospital team and assisting with animal care to kennel cleaning, enrichment, administration, events, and custodial support — **volunteers power our mission every single day.** Their time, compassion, and dedication enable us to care for more animals, expand our programs, and reach further into the community than we ever could on our own.

**There are many ways to volunteer.** Community members contribute their time in ongoing roles, students gain hands-on experience through co-op placements, and in 2025, we were proud to participate in the Canada Summer Jobs program. We welcomed summer students who explored potential career pathways while making meaningful contributions to animal welfare.

**Simply Put, We Could Not Do This Without Them.**



Join the  
Pack!

# EXPERT CARE, EVERYDAY



## Essential Surgeries, Greater Impact

Spay and neuter surgeries are a cornerstone of responsible pet care. By providing these procedures to both shelter animals and pets in our community, we help prevent overpopulation, reduce the number of animals entering our care, and support better health outcomes.

**Timely access to spay and neuter services helps pets live longer, healthier lives** while creating positive, lasting impacts for animals and families across our region.

## A Chip, A Chance to Return

Keeping pets safe is always a top priority. **Our hospital provides microchipping for all animals in our care as well as for community pets,** helping families feel secure and greatly increasing the likelihood that lost pets are returned home. These simple yet powerful preventative measures support lifelong safety and well-being.



Hospital Services

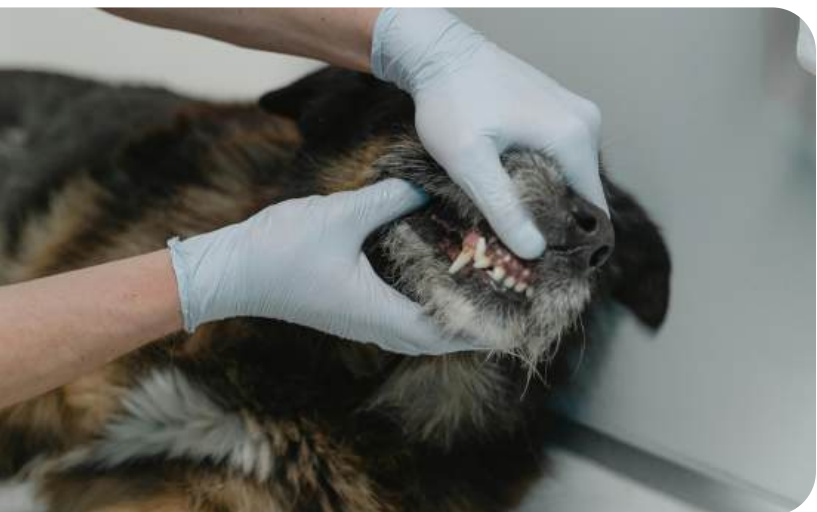


▶ 4,151

Pets Spayed/Neutered



# SPECIALIZED CARE, GREATER ACCESS



## Expanding Our Dental Program

Dental health is a vital part of a pet's overall well-being, yet it is often one of the most overlooked aspects of care. **This year, we expanded capacity in our dental suite by 50%** with the addition of a part-time veterinarian dedicated to dentistry and mentorship. This investment enables us to provide more dental procedures for animals in our care while supporting the training of veterinary professionals—strengthening the quality of care today and for the future.

## Opening Dental Services to the Community

With our expanded veterinary team and enhanced dental suite, **we are preparing to offer dental services to the public** in the 2026 - 2027 fiscal year. This will allow more pets in our community to receive essential dental care, promoting overall health and wellbeing. By extending these services beyond the shelter, we can support families, prevent future health issues, and ensure more animals get the care they deserve.

## Advancing Our Team and Services



Dr. Dave Kerr joined the HBSPCA team with extensive experience and leadership. He strengthens our veterinary program everyday through clinical expertise, mentorship, and guidance for staff and students.



Dr. Sam Palmer, a graduate of St. George's University in Grenada, brings a strong passion for surgery. Her skills expand our surgical capacity, helping more animals receive timely care.



Dr. Steph Dam transitioned from part-time to full-time this year, expanding her impact across the HBSPCA team. She has also developed advanced dental skills, increasing care for animals.



Dr. Tammy Hornak leads our Remote Veterinary Services, delivering essential care to pets in underserved communities. Her work ensures animals in crisis receive compassionate treatment wherever they are.

# HONOURING EVERY LIFE WITH DIGNITY

## Compassionate End-of-Life Care

Saying goodbye to a beloved pet is never easy, and **our End-of-Life Care program supports families with compassion, privacy, and respect.** We provide a peaceful environment to honour each pet's life, along with meaningful memorial options.

Families can also choose **Pet Mausoleum plaques and niches as a permanent resting place at the HBSPCA**, or commemorate their pet on our Precious Memories Wall—both in-shelter and online—ensuring they are remembered and celebrated for years to come.



750

Pet Parents Utilized the Compassionate End of Life Program for Their Pet

Get Pet Loss Support



## Support Through Every Stage of Loss

Losing a pet can be incredibly difficult, and no one should have to navigate that grief alone. The **HBSPCA's Pet Loss Support program offers resources and guided support for those experiencing loss**, anticipating difficult decisions, or coping with grief at any stage. Through monthly support sessions led by an experienced bereavement counsellor, participants can share memories, process emotions, and find comfort in a compassionate, understanding community.

We are actively advancing this program to reach more families and provide even stronger guidance, because supporting pet owners through loss is a vital part of our mission to care for both animals and the people who love them.



# GIVING EVERY PET A SECOND CHANCE



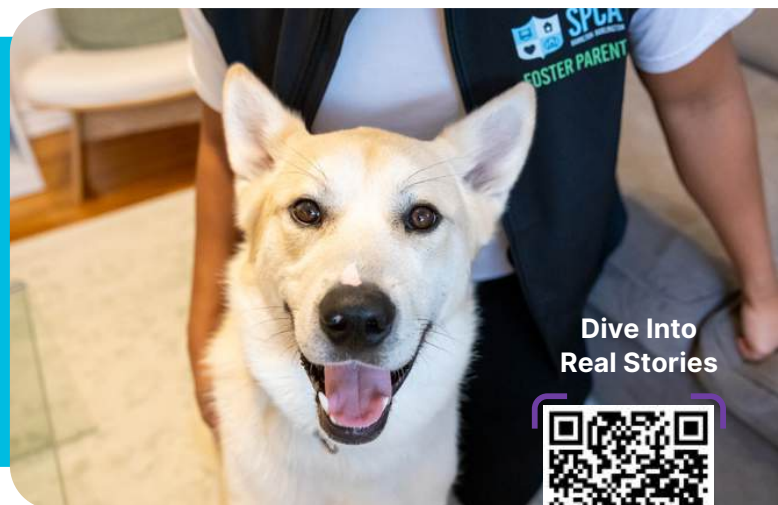
## Shelter Care at the HBSPCA

Our shelter provides a safe, supportive environment where every animal receives individualized care. **From medical attention and enrichment to socialization and behaviour support, we help pets heal and prepare for adoption.** Each journey is guided by a team of skilled staff and volunteers, ensuring that animals thrive physically, emotionally, and socially. Every day in our shelter is an opportunity to set them up for a happy, healthy future and to connect them with the family they deserve.

## From Foster to Forever

“Hi, I’m Leo! I arrived at the HBSPCA anxious and struggling with separation habits. In my foster home, I found calm, routine, and gentle guidance that helped me relax, grow confident, and show my true self. **Thanks to fostering, I was ready for my forever home — it gave me the second chance I needed to thrive.**”

- Leo, HBSPCA Alumni



Dive Into  
Real Stories



## Introducing: FlexFoster

**FlexFoster is a brand-new addition to our foster program,** created to provide pets with a loving temporary home when their regular foster family needs a break—weekends, trips, or unexpected emergencies. We implemented this role to reduce stress for both pets and foster families, keeping animals out of the shelter while supporting long-term foster placements. **This new option**

**makes fostering more flexible, sustainable, and accessible** for families who want to help but may occasionally need support. By bridging these short-term gaps, FlexFoster ensures pets continue to thrive in a home environment, while foster families can be away without worry. It’s an exciting way to expand our foster network and give even more animals the second chances they deserve.

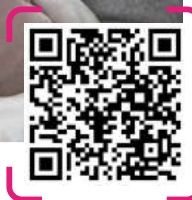
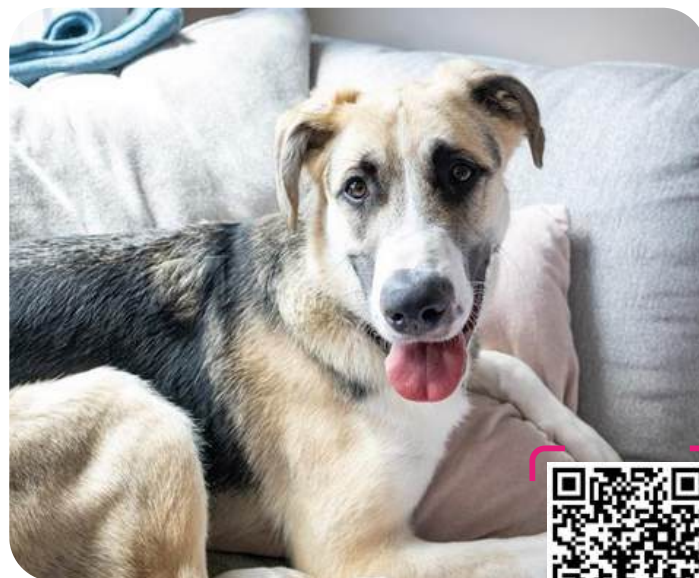
- ▶ **460**  
Foster Placements
- ▶ **120**  
Foster Parents
- ▶ **22**  
Foster Fails

# FROM CARE TO CONNECTION

## Adoptions: Giving Pets a Second Chance

Rocky came to the HBSPCA when his owner could no longer care for him. As a large dog, he needed extra space, attention, and patience. After a brief adoption that didn't work out, **our team provided behavioral support and training to prepare him for his next home.**

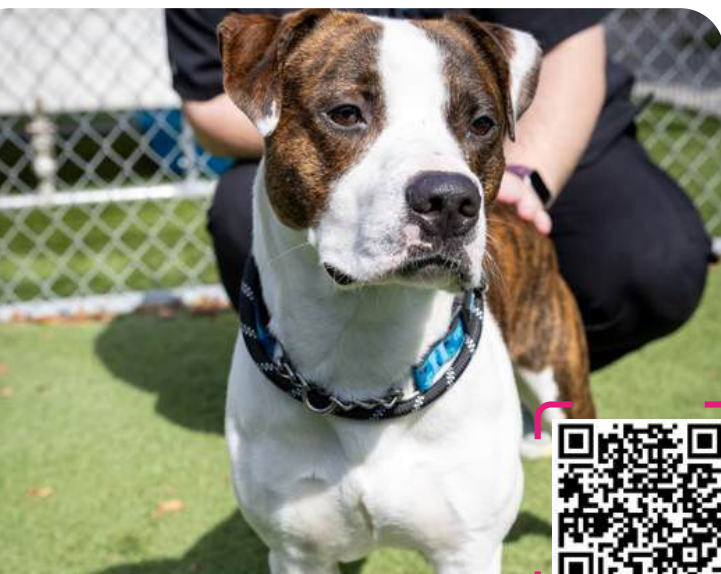
Jade met Rocky at the shelter and felt an instant connection. Since then, **he's settled into his forever home with her**, bringing joy, companionship, and comfort. Rocky's story shows how patience, support, and the right match give every animal a true second chance.



Meet Rocky & His New Family

## Enrichment & Training: Thriving Every Day

**While at the shelter, Milo also received training and support** to build confidence and calm in new situations. Obedience classes and behavioral lessons help dogs like Milo trust humans, understand boundaries, and thrive in new homes when the time comes. Our team keeps pets active and engaged with puzzle feeders, walks, playtime, and daytime trips for dogs, and sunny catios with toys and perches for cats. **Enrichment isn't just fun; it strengthens health, happiness, and readiness for life in their forever homes.**



Watch Milo's Adventure



▶ **1,363**  
Adoptions

▶ **1,273**  
Surrenders

# CARING FOR PETS BEYOND OUR DOORS



## Temporary Clinics, Lasting Impact

Pet Health Outreach Clinics are designed to meet families where they are. Many continue to be delivered in community locations, **transforming shared spaces into temporary clinics** before equipment, medications, and supplies are packed up and moved again. Previously, even clinics held at our shelter operated this way.

### Our Partners:

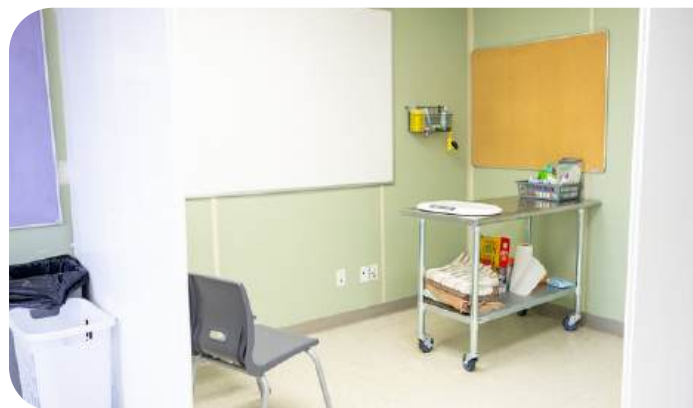


## A Dedicated Space for Accessible Care

This year, as our organization continued to grow and evolve, new space opened up on our property. Rather than leave it unused, **we embraced the opportunity to strengthen this essential program.** That space was proudly transformed into a dedicated clinic area for Pet Health Outreach. **The impact was immediate.**

With a consistent, fully equipped environment designed specifically for these clinics, our team can focus less on set-up and logistics and more on delivering care. The dedicated space reduces stress for pets and families, improves efficiency, and allows us to host more clinics at our shelter.

**By maximizing the resources already available to us, we expanded access to affordable veterinary care** — helping more families keep the pets they love healthy and at home.



# TRACKING OUR IMPACT

## Care Where It's Needed Most

Pet Health Outreach delivers accessible veterinary care directly into the community. **By removing barriers and meeting families where they are**, the program promotes prevention, keeps pets healthy, and helps families stay together.



## A Record Year for Outreach

This year marked a major milestone for Pet Health Outreach, with **the number of clinics held tripled compared to last year**. This significant growth reflects our commitment to expanding access to care and meeting more families where they are.

By increasing our reach across the community, we delivered more preventive services, supported more pets, and strengthened our ability to keep animals healthy and families together.



- ▶ **6,500+**  
Number of Vaccinations Administered
- ▶ **3,349**  
Number of Pets Examined  
910 Dogs, 777 Cats
- ▶ **125**  
Number of Clinics Held
- ▶ **28**  
Number of Host Locations

# FEEDING PETS, SUPPORTING FAMILIES



- ▶ **1,442,820**  
Meals Delivered Directly to Pet Owner's Doors
- ▶ **50+**  
Food Bank Partners Across Hamilton/Burlington
- ▶ **2,203,060**  
Meals Distributed Through Our Network of Community Food Partners
- ▶ **80%**  
Percentage of Volunteers in Pet Pantry Operations

## Food, Care, and Community

No pet should go hungry. **The HBSPCA Pet Pantry provides food and supplies to families facing temporary financial challenges**, helping pets stay safe, loved, and at home.

Since its launch, the program has become the **largest in Canada, serving thousands of pets across Hamilton and Burlington**. Last year, the Pet Pantry also supported pets affected by wildfires by sending over a total of 110,000 lbs of life-saving pet food to partner organizations in Manitoba, Thunder Bay, and Northern Ontario.

Powered by generous donors and dedicated volunteers, the Pet Pantry continues to grow — reaching more families, providing more food, and responding faster than ever.

Read About  
Wildfire Relief



See The  
Impact



# ON THE ROAD FOR PETS AND FAMILIES



## Expanding the Road to Support

As demand for Pet Pantry deliveries grew, we realized our shared program vehicles weren't enough — families sometimes waited 30–60 days for food. To respond faster, we called on our community for support.

**Within 24 hours, local donors stepped up. Thanks to the generosity of the O'Brien Family Foundation and Driving Force Burlington, the HBSPCA added three high-roof Ford Transit vans to our fleet. These dedicated vehicles allow us to deliver food directly to homes, dramatically reducing wait times and reaching families who face barriers** like limited mobility or lack of transportation.

This isn't just about more vans on the road — it's about keeping pets in their homes, supporting families, and responding to need with speed and compassion.

Explore the Details 



## Partner Spotlights:



# HELPING CATS THRIVE OUTDOORS



## TNVR in Action

Community Cats are free-roaming cats with no verifiable owners. They can be feral or friendly, young or old, and they live throughout Hamilton and Burlington—in streets, parks, farms, and forests. The HBSPCA’s Community Cat Program uses evidence-based Trap-Neuter-Vaccinate-Return (TNVR) practices to **provide care, stabilize populations, and improve outcomes for cats while keeping communities safe.** Our onsite recovery suite ensures cats can rest and heal in a calm, temperature and scent-controlled environment before returning to their colonies.



## Annual Community Cat Solutions Initiative

Last April, our first Community Cat event brought staff, volunteers, and community members together for five days of action. The team trapped, neutered, vaccinated, and returned **65 cats, while 16 more were assessed and placed for adoption**, giving them a start in loving homes.

The energy, teamwork, and dedication from everyone involved made the event a tremendous success.

This year, we aim to exceed last year’s results, helping even more cats and creating stronger outcomes for both animals and the community.

## Winter Care for Community Cats

During winter, **we handcraft outdoor shelters** with the help of volunteers, providing warmth, protection, and safety for community cats during harsh weather.

Learn About Our Annual Initiative



# BUILDING BETTER OUTCOMES FOR COMMUNITY CATS

Explore the Program



## Strategic Cat Care

Our Community Cat Program targets high-volume areas first, then expands outward to surrounding neighbourhoods. By working directly with colony caregivers and taking our team on the road, **we provide hands-on TNVR support while maximizing impact across the region.**



## Start Your TNVR Journey

**The HBSPCA offers TNVR 101 education sessions**, both in-person and virtual, to support anyone interested in helping community cats humanely. Participants **learn the Trap-Neuter-Vaccinate-Return process, safe handling techniques, and responsible colony management.**

Attending TNVR 101 is a great first step for those considering becoming a colony caregiver, helping cats thrive while supporting healthier, more stable communities.

## Impact at a Glance:

▶ **192**  
Community Cats Moved into the Adoptions Program

▶ **402**  
Cats TNVR'd in the Community Cat Program

▶ **1,230**  
Kittens Prevented  
(Through TNVR Services)

▶ **30,000-45,000**  
Community Cats in Hamilton

# EXPANDING CARE THROUGH REMOTE CLINICS



## Bringing Care Closer

For many remote and Northern communities, access to veterinary care is limited — or completely unavailable. Families who deeply love their animals often face significant barriers to essential services like vaccinations, spay/neuter surgeries, and urgent medical treatment.

**That's why the HBSPCA launched Remote Community Veterinary Services:** to close the care gap and ensure geography does not determine an animal's quality of life.

This program brings veterinary expertise directly to communities that would otherwise go without. By working collaboratively with local partners and leaders, our team delivers high-quality, compassionate care where it is needed most.

**But this initiative is about more than medical treatment.**

## It's About:

- Preventing suffering before it begins
- Supporting families who want to care responsibly for their pets
- Reducing overpopulation through accessible spay/neuter and birth control services
- Strengthening trust between communities and animal welfare organizations

Learn About  
the Program



# REACHING PETS, STRENGTHENING COMMUNITIES

The impact extends far beyond each appointment. Healthier animals mean stronger communities. Preventative care reduces future crises. And meaningful partnerships ensure solutions are rooted in respect and collaboration.

Remote Community Veterinary Services reflects our belief that **animal welfare must be accessible, equitable, and proactive — not reactive.**

Because every animal deserves care, no matter where they live.

## Impact at a Glance

- ▶ **600+**  
Veterinary Services Delivered
- ▶ **181**  
Non-surgical Birth Control Implants Administered
- ▶ **200+**  
Microchips Administered
- ▶ **400+**  
Animals Examined & Treated



# EDUCATE. INSPIRE. ENGAGE.



## Turning Curiosity Into Action

Humane education is key to building a more compassionate community. Through programs like Summer Camp, workshops, tours, and group visits, **participants gain hands-on experiences that connect them directly to animal care.**

One area that has seen exciting growth this year is our birthday party program—welcoming young animal lovers into the shelter for interactive, memorable celebrations. **These experiences combine fun with learning**, giving children the opportunity to explore the shelter, take part in enrichment activities, and even meet animals, all while building empathy and understanding.

These programs go beyond education, helping to shape a community where animals are valued, cared for, and protected.

## Empowering Care, One Person at a Time

There's something for everyone, at every age. Celebrate the human-animal bond with these immersive community learning experiences.



See What We Offer

Book a Birthday



# LEARNING. LEADING. LOVING ANIMALS.

## The HBSPCA Summer Camp

**Summer Camp returned to the HBSPCA in 2025, bringing hands-on learning and meaningful connections with shelter animals.** Campers explored animal care, created enrichment, and learned how to advocate for animal welfare through interactive activities and guest speakers.

In 2026, Summer Camp will pause as construction begins on our new facility—an exciting step toward expanding our impact. We look forward to welcoming campers back into an even better space in the future.



## Tours & Field Trips: See, Learn, Connect

Tours and field trips offer an engaging way to connect with animal welfare through real-world experiences. **Visitors explore the shelter, learn how we care for animals, and take part in hands-on activities like creating enrichment and supporting daily care.**

With opportunities to meet animals and hear their stories, these visits inspire empathy, deepen understanding, and show how every individual can make a difference.



See What  
We Offer

# SPREADING JOY, ONE PAW AT A TIME

## The HBSPCA's Pet Visiting Program

Bringing the comfort and joy of animal companionship to those who may not otherwise experience it.

Volunteers and their Pet Ambassadors visit long-term care facilities, hospitals, universities, shelters, and community centres, sharing affection, smiles, and uplifting interactions.

**Participants benefit from reduced anxiety, improved mood, and decreased loneliness.**



## New This Year: Corporate Comfort Crew

In early 2026, we launched our Corporate Comfort Crew to bring the joy and comfort of pets into workplaces. Long hours, high stress, and social isolation can take a toll on well-being, but our ambassadors create moments of calm, play, and connection that uplift employees and bring a sense of companionship to their day.

By sharing the unique comfort only animals can provide, **this program helps people feel supported, less stressed, and more connected** — proving that even a short visit from a furry friend can make a meaningful difference for someone.

▶ **450**

**Hours of Pet Visits**

▶ **47**

**Host Locations Across Hamilton/Burlington**



**Our ambassadors can visit your workplace too!** Check out the program details and bring the magic of animal companionship to your team.

**Program Details Here**

# LOVE THAT LIVES ON

## Legacy Giving at the Hamilton/Burlington SPCA

For many people, love for animals is woven through a lifetime — in paw prints across kitchen floors, in quiet companionship, in the simple comfort of a warm presence at the end of the day.

For some, that love is also written into the future.

Legacy gifts are deeply personal acts of compassion. They reflect a belief that **every animal deserves safety, dignity, and a place to belong** — not only today, but for years to come. Through a gift in a will or other planned arrangement, supporters ensure that their care for animals continues long after they are gone.

### Because of Legacy Supporters:

- Injured animals receive life-saving medical care.
- Frightened pets are given time, patience & the chance to trust again.
- Families find their newest companions.
- The organization can plan confidently for the future of animal welfare in the community.

Legacy giving is not about the end of a life. It is about the continuation of values. It is a quiet promise that compassion will outlast a lifetime.

Every bequest becomes part of an enduring circle of care — **transforming loss into hope, and memory into meaningful action.**



In 2025-2026 the Hamilton/Burlington SPCA received **17 bequests**. We are grateful to the donors who planned for the future.



Start Your  
Legacy



# SHOPPING THAT SUPPORTS ANIMAL CARE



## Pet Thrift

### Every Purchase Makes a Difference

Located inside the HBSPCA shelter, our Pet Thrift Store offers a welcoming, in-person shopping experience where every purchase helps support animals in our care and the services they rely on.

With a constantly changing selection, visitors can find **gently used pet items at affordable prices**—making pet care more accessible while supporting our mission.

### You Might Find:

- Collars, leashes, and harnesses
- Toys and treats
- Coats and seasonal gear
- Accessories and supplies
- Enrichment games and tools



Every purchase gives back—helping us care for more animals in need.

### Get Involved:

Donate gently used pet items, shop in-store, or spread the word—every action helps support animals in our care.



Learn  
More



# PLAY FOR IMPACT

## The HBSPCA Lottery

A fundraising initiative that helps support the cost of caring for animals in need. Funds raised provide essential medical treatment, shelter, food, and rehabilitation for animals who arrive in our care, ensuring they receive the support they need on their journey to adoption.

It's a meaningful way for the community to get involved while directly contributing to animal welfare in Hamilton and Burlington.

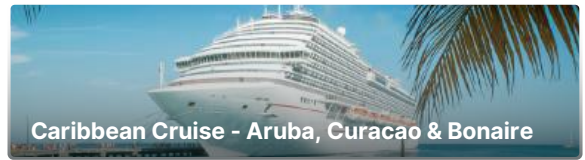
## Introducing the 50/50 Raffle

This past year, we introduced a 50/50 raffle as a new addition to our fundraising efforts, offering another way for supporters to get involved. Alongside the traditional lottery, the raffle helped raise additional funds for animal care while giving participants the chance to win cash prizes.

Every ticket purchased continues to directly support animals in our shelter, helping provide medical care, comfort, and second chances.

Our first-ever 50/50 raffle raised an amazing \$22,772 to help provide care, healing, and second chances for animals in our community.

# SPCA HAMILTON/BURLINGTON FALL LOTTERY & 50/50 RAFFLE



VACATION OR CASH, YOUR CHOICE!



# STAYING TRUE TO OUR ROOTS



## Advocating For Animals

At the HBSPCA, we don't just care for animals in our shelters—we fight for their well-being in our communities and beyond.

**In 2025, we launched our Animal Advocacy Initiative** to amplify the voice of those who cannot speak for themselves. Through petitions, emails to decision-makers, and targeted campaigns, we are influencing policies and laws that protect animals and improve their lives.

This work stays true to our 139-year history, ensuring our mission extends beyond the shelter walls—**because advocating for animals is just as important as caring for them.**

### Use Your Voice!

Learn more about our advocacy efforts and how you can help create meaningful change.

**Become An Advocate**



# GROWING TO SERVE MORE

## Expanding Our Footprint With Purpose

This year marked an important milestone for the Hamilton/Burlington SPCA: **we expanded to three dedicated locations** — each with a distinct purpose, all working together to serve animals and the people who love them.

As construction begins on our new Unleash Love campus, our administrative team relocated from the on-site portable at the shelter to a separate office space. This move was not about adding overhead — it was about making room for growth.

Today, our three locations include:

- Shelter & Companion Animal Hospital
- Pet Pantry
- Administrative Office

**Each space exists for one reason: to strengthen our ability to serve.**



## Smarter Space. Stronger Service.

Creating dedicated space has allowed us to grow thoughtfully — expanding staff roles and, importantly, increasing volunteer engagement across the organization.

With more room to coordinate, train, and collaborate, we are able to:

- Welcome more volunteers
- Increase operational efficiency
- Respond more quickly to rising demand
- Support more animals and families

**As needs grow, expanding our operational capacity ensures we can meet today's challenges while preparing for tomorrow.**

# SPECIAL THANKS TO OUR 2025–2026 COMMUNITY SPONSORS, SUPPORTERS, PARTNERS AND DONORS

## Community and Institutional Partners

- Adult Community Support Program
- Binbrook Senior Euchre Club
- Bishop Ryan Catholic Secondary School
- Burlington Badminton Club
- Canadian Red Cross
- Columbia International College
- Country Canines Play Park
- CUPE Local 44
- Greater Good Charities
- Hamilton Child & Family Supports
- Hamilton Football Officials Association
- Hamilton Police Association
- Hamilton Police Services
- Hayden Secondary School
- Hydro One Employees' & Pensioners' Charity Trust Fund
- Lyonsgate Montessori School
- McMaster University Libraries
- Orchard Park Secondary School
- St Paul's Anglican Church
- United Way of Eastern Ontario
- United Way of Greater Toronto

## Businesses

- 2 Itzus & You
- 3D Warehousing & Logistics
- Advanced Office Solutions
- AGL Grass
- Airport Ford Lincoln Ltd
- All in Property Maintenance
- Amazon
- Ancaster Toyota
- Anna's Lottery Shop
- Arterra Wines Canada Inc
- Assurance Insights Inc.
- Assurant
- Aviva Canada
- Azura Infant Feeding Support
- Badger Communications & Media Training Inc.
- Beattie Pet Hospital
- Bell Canada
- Best Buy
- Blue Sky Glass Studio
- Bone Density Clinic
- Brant Financial Group
- BrokerLink Insurance
- Brookfield
- By Hook or By Needle
- CAA Corporate
- Canal Block

- Cascadia Metals Ltd
- Centura Tile
- CIBC Canada
- Comand Group
- Computacenter Canada Inc.
- Convoy Logistics Providers Ltd
- Country Canines Play Park
- Cowan Insurance
- Dalzotto Homes
- De Lage Landen Financial Services Canada Inc.
- Dillon Consulting Limited
- Dr. Frank J. Hayden Secondary School
- Dundas Downtown BIA
- Eastflo Industrial Sales Inc
- Economical Insurance
- Elihan Tech
- Enbridge Pipelines Inc
- Evergreen Crematorium
- Fairweather Brewing Company
- Flying Camel Advertising Design PR
- Form & Build Supply Management Inc.
- Four Daughters Inc
- GamePlan Marketing Inc.
- Genesis Aviation, Inc.
- GFL Environmental Inc
- Global Pet Foods
- Google
- Halwell Dumfries Mutual Insurance Company
- Hamilton 7
- Hamilton Cannabis Co
- Hill's Pet Nutrition
- Hitachi Energy
- HPG Sales
- Imperial Coin & Stamp
- Intact Insurance
- Ivy North Corporation
- Jackson Square Dental
- JTI-Macdonald Corp
- JTLawler Inc
- LCBO
- Leggat Dealer Management Services
- Lexington RV Resort
- Lintack Architects Inc
- Lugowy Professional Corp
- Mabel's Labels Inc
- Manulife Financial
- Medicine Professional Corporation
- MemoryFox, Inc.
- Metropolitan College

- Microsoft
  - Midgley & West Limited
  - MLC Ecosystem Restoration Inc
  - MTE Consultants Inc
  - My Lucky Lotto Shop
  - My Sam Services
  - National Steel Car Ltd
  - Nestle Purina Petcare Canada
  - NFP Insurance
  - No Frills
  - NO9254ME Inc
  - Norstar Windows & Doors Ltd
  - North America Construction (1993) Ltd.
  - Northern Perspective
  - Novel Vet Clinic
  - P1M Corp
  - Pacific Life Foundation
  - Parker Hannifin
  - Parkview Nursing Centre
  - Paw.com
  - Pet Valu Binbrook
  - Pet Valu Canada Inc.
  - Pet Valu Red Hill
  - Playhouse Cinema Inc
  - Port X Logistics
  - Quartz Productions ULC
  - Rain Digital Communications Inc
  - Raytheon Technologies
  - RBC
  - RELX Inc
  - River Birch Threads
  - Robinson Consultants Inc.
  - RW McLennan Consulting Inc
  - Salesforce
  - Samuel, Son & Co., Limited
  - Schbeuder Electric
  - Security Financial Services
  - Seismic Software, Inc.
  - Serene HealthCare Clinic
  - Siemens Canada
  - Sonepar Canada
  - South Meadow
  - Space Ops Inc
  - SPD Sales
  - Sports Equipment of Toronto Ltd.
  - Stoney Creek Community Services Corporation
  - Stoney Creek Furniture
  - Stryker
  - Sun Life Financial
  - Suri Insurance and Investments Inc
  - Tapestry Community Capital
  - TD Commercial Banking
  - The Book Umbrella
  - The CLOROX Company
  - The Contour Room
  - The Daniels Corporation
  - The Mazza Team
  - The Rental Dept Inc.
  - The Squire - Pub on Locke
  - Tiercon Automotive
  - Titan Recycling Inc.
  - Toke Cannabis
  - Toronto Police Association
  - Uber Freight
  - VCA Canada Kingsway
  - Veronics Instruments Inc.
  - Village Hair Design
  - Wentworth-Halton X-Ray and Ultrasound Inc
  - Wink Property Investment
  - WM. Groves Limited
  - Your Neighbourhood Credit Union Ltd
- ### Foundations
- Barbara Malcolmson Memorial Fund
  - Bastedo Family Foundation
  - Bryce Family Fund
  - Canadian Red Cross
  - CGC Charitable Foundation
  - Charities Aid Foundation Canada
  - Cheryl and David Sergeant Trust
  - Claude Broughton Charitable Foundation
  - Cowan Foundation
  - Diane & Colin Brown Foundation
  - Dr. & Mrs. Bernard A. Wiechula Foundation
  - Elisabeth Couprie Charitable Fund
  - Eric S. Margolis Family Foundation
  - Glen & Debra Swire Charitable Fund
  - House of Love Foundation
  - Jennings Family Foundation
  - Joe, Filomena and George Seliga Holdings Fund
  - Karen & Peter Turkstra Family Foundation Fund
  - Lucky Lacey Foundation
  - Marta & Owen Boris Foundation
  - McLennan Family Charitable Account
  - Nancy & George Ruttle Foundation
  - Ontario Trillium Foundation
  - Pacific Life Foundation
  - Rauchwerger Zeller Family Fund
  - Sam and Roma Mercanti Foundation
  - SLG Family Foundation
  - The Apollo Fund
  - The Fiera Capital Foundation
  - The Gilmour Fund
  - The Marjorie Pearce Foundation
  - The Phenix Fund for Animal Welfare
  - The Schwenger Family Foundation
  - The Smash & Monk Foundation
  - The Wilson and Becke Foundation
- ### Media Partners
- CHCH TV
  - The Hamilton Spectator
  - Bell Media
  - Hamilton City Magazine
  - Cable 14

# BY THE NUMBERS



- ▶ **70,000+**  
Hours of Care
- ▶ **88,770**  
Volunteer Hours
- ▶ **3,349**  
Community Pets Served in  
over 125 Clinics
- ▶ **3,645,880**  
Pet Meals Distributed
- ▶ **4,151**  
Pets Spayed/Neutered

▶ **ZERO**  
Healthy or Treatable  
Animals Euthanized

See The Impact





**SPCA** HAMILTON/  
BURLINGTON

**Unleash**  
with **Love**  
My **SPCA**



Charitable Registration  
Number: 119236750 RR0001



**HELP US UNLEASH THE  
FUTURE OF ANIMAL CARE.**



**Address:**  
245 Dartnall Road,  
Hamilton ON, L8W 3V9

**Phone:**  
905-574-7722

**Email:**  
[info@hbSPCA.com](mailto:info@hbSPCA.com)

**Admin Hours:**  
Monday - Friday  
9am - 5pm