

MedPark

S1

**NEW BONE
NEW LIFE**

DENTAL

NATURAL BONE SUBSTITUTE



NEW BONE NEW LIFE

Keywords



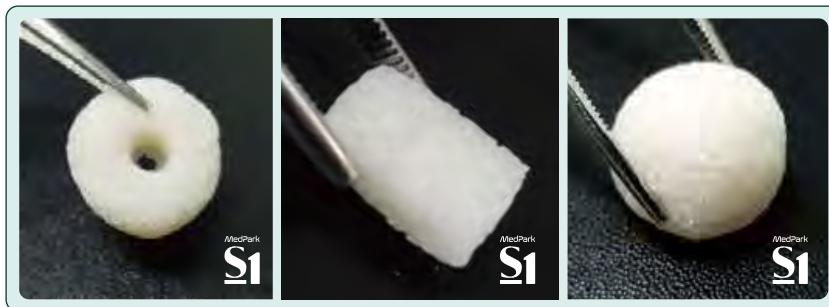
VS



S1 (Bovine Bone)

Bovine Bone Mineral

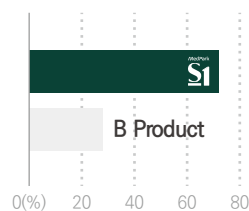
- 1 Excellent adhesion and fixation
- 1 Rigid Space Maintenance
- 1 Excellent osteoconduction



S1 (Bovine Bone)

- 1 Easy to manipulate
- 1 Various indications

1 High porosity



Porosimeter Test

- Percentage of porosity is more than 70%
- High porosity allows rapid penetration of growth factors

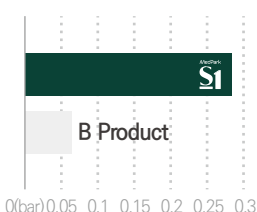
1 Improved Hydrophilicity



Hydrophilicity Test

- Porous structure makes blood circulation easily

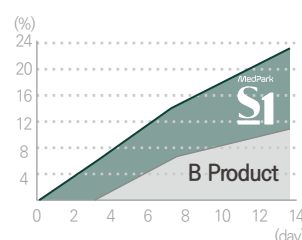
1 Excellent shape maintenance



Pressure Test

- Perfect shape maintenance against high pressure from outside compared to other bone

1 Bone formation rate



Mass Increase Test

- High attachment rate of ions to S1
- 21% increase in mass after 14 days due to high adhesive rate of ions

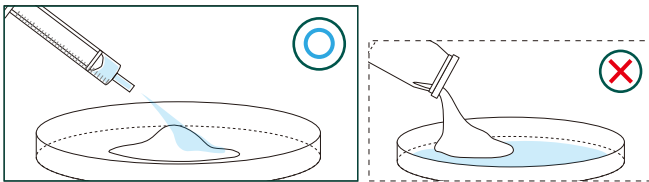
Quick Guide

✓ Please apply the liquid as indicated

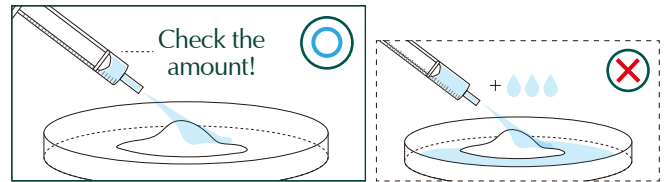
✓ Do not mix with other bonegraft

✓ Each package is for one-time use only

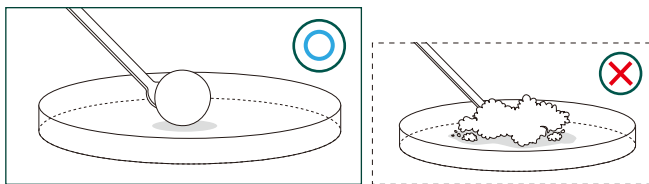
✓ Mix with solutions well enough



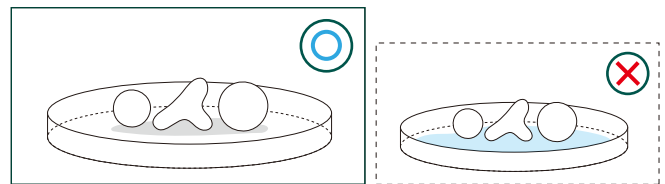
1 Place S1 in the tray and hydrate the materials with saline



1 Please use the recommended amount of saline only.



1 Knead the dough enough for at least 30 seconds by using hands or tools to form a lumpy shape before using S1.



1 Do not soak in saline after shaping for a surgery

Recommended Hydration Amount

Particle size	Weight	Recommended Hydration Amount
0.2 ~ 1.0 mm (Powder Type)	0.5cc ($\approx 0.25\text{g}$)	0.3 cc
	1cc ($\approx 0.5\text{g}$)	0.6 cc
	2cc ($\approx 1.0\text{g}$)	1.2 cc

Particle size	Weight	Recommended Hydration Amount
1.0 ~ 2.0 mm (Chip Type)	0.75cc ($\approx 0.25\text{g}$)	0.4 cc
	1.5cc ($\approx 0.5\text{g}$)	0.8 cc
	3cc ($\approx 1.0\text{g}$)	1.6 cc
	6cc ($\approx 2.0\text{g}$)	3.2 cc

Concept of customized Bonegraft material

Sticky Bone without Blood Collection!

Bovine Bone Mineral

Unable to mold
Lack of retentivity

Scattered & Flowing

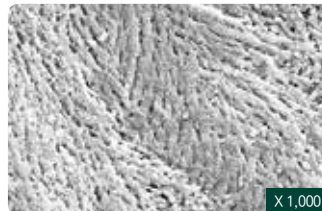
Blood collection to make
sticky bone

Moldable & Customizing

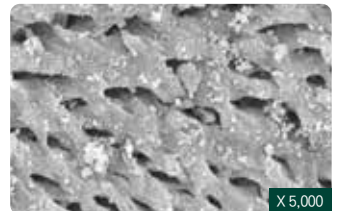
Customized build up

Sticky bone made easily
with saline or blood

BOVINE BONEGRAFT



X 1,000



X 5,000

S1 has similar structural characteristics with human bones

Due to its high porosity, S1 provides the most optimal environment for promoting osteoblast adhesion, blood vessel formation, and bone regeneration.

Innovative technology

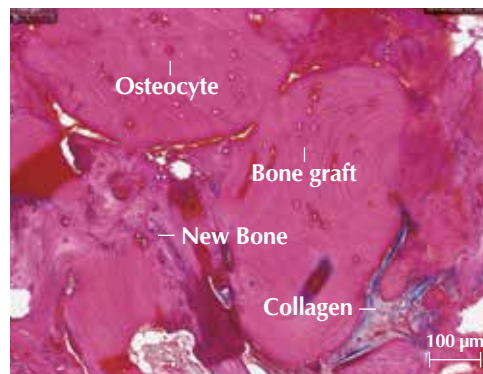
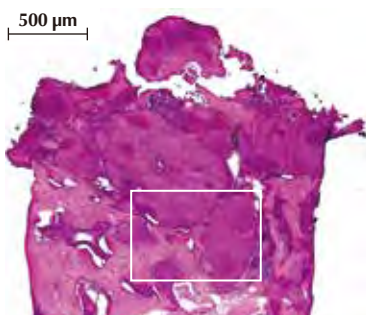
Check it out for yourself !

Biopsy

※ Hematoxylin & Eosin Stain

Case 1 | #14, Ridge augmentation

Patient Info : 65 years-old, Female

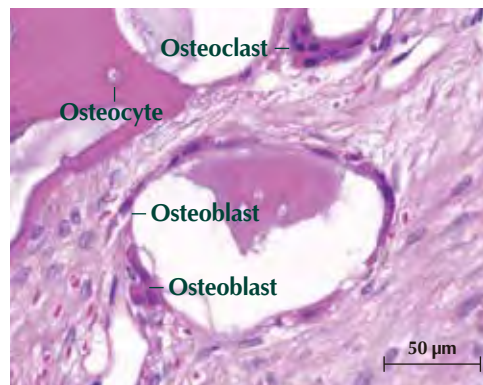
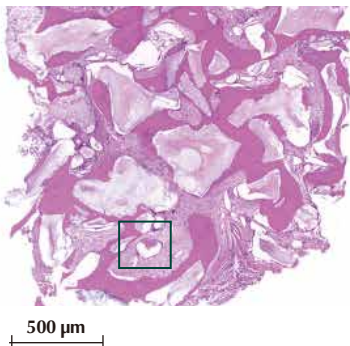


Clinical Opinion

- Excellent bone formation around bone graft material
- The graft materials appeared surrounded by newly formed bone
- No sign of inflammation or immune rejections

Case 2 | #26, Sinus graft

Patient Info : 73 years-old, Female



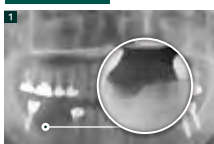
Clinical Opinion

- Excellent osteoconduction as it shows osteoclasts and new bone formation
- No evidence of inflammation or immune rejection

Clinical cases

Case 1

Patient Info : 59 years-old, Female



Before surgery



Placing Fixture



Grafting S1



Suture



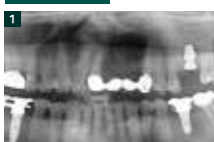
After grafting S1



Final prosthesis

Case 2

Patient Info : 66 years-old, Male



Before surgery



Placing Fixture (Implant placement at #11, #21, #22)



Grafting S1



4 months after S1 graft



X-ray after final prosthetics



Final prosthesis

MedPark



E-mail biz@medpark.net
www.medpark.net