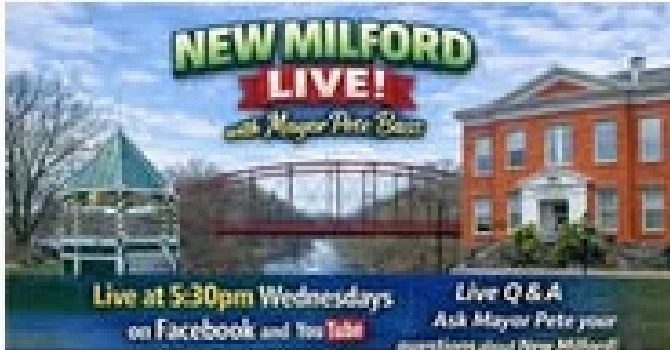


Mayor's Update

The Best Town in the USA!

Volume 7, Issue 44, June 23, 2026



Articles in this newsletter:

- *New Milford Live!*
- *Miles off Main*
- *Tech Talk Webinar*
- *Faith Night*
- *Open Maker Space*
- *Ice Cream Crawl*



Journey through the heart of downtown New Milford! Beginning and ending at Roger Sherman Town Hall, your route takes you along Main Street, Bank Street, Railroad Street, and Church Street where you'll discover local businesses, historic charm, and the community spirit that makes downtown a welcoming destination for residents and visitors alike! Pick up your journal at any of the five locations listed below. Visit at least **THREE (3)** participating businesses on **EACH STREET** to collect their "stamps" in your thinking journal. Participating businesses will have a flyer posted in their windows. To complete the challenge, collect a minimum of 12 "stamps" and record the date of each visit in your journal. After collecting your stamps, bring your journal to Town Hall to receive your Official Medal of Completion. Happy Exploring! **NO PURCHASE NECESSARY.**



Bank Street

- TOBACCO SHOPPER & MORE, 11 Bank St.
- GRASSROOTS CREAM, 11 Bank St.
- GRAND OPENING, 11 Bank St.
- PAUL WORTON JEWELRY, 11 Bank St.
- THE HUNT, 21 Bank St.
- JOHN SAULON, 21 Bank St.
- A-101, 31 Bank St.
- CONFRATERNITY COLLEGIUM, 31 Bank St.
- EVERGREEN LAKE B&B, 31 Bank St.
- BAWLE STREET THEATER, 31 Bank St.
- PLAY, 31 Bank St.
- JANE'S CLOSET SHOP, 31 Bank St.
- COMMON BUTTER, 31 Bank St.

Railroad Street

- RETICEMAK, 11 Railroad St.
- THE WHEELBARROW, 11 Railroad St.
- QUALITY 24, 11 Railroad St.
- ALL ABOUT PIZZERIA, 11 Railroad St.
- BEANS, 11 Railroad St.

Church Street

- JESSIE'S ICE CREAM, 11 Church St.
- MONROE TOWNS, 11 Church St.
- DOCK'S GARDENS, 11 Church St.
- VILLAGE CENTER FOR THE ARTS, 11 Church St.
- NEW MILFORD PUBLIC LIBRARY, 11 Church St.
- MULTI-COLOR, 11 Church St.
- REUNION BOOKS & TA, 11 Church St.
- BLON, 21 Church St.
- BEYOND BREAD, 21 Church St.
- JOSEPH'S RESTAURANT, 21 Church St.

Church Street

- WINE TASTING, 11 Church St.
- WINE & CO, 11 Church St.
- MAKIN' TADES, 11 Church St.
- BOTH CHAIR FLOWERS, 11 Church St.
- WINE & CO, 11 Church St.



Roads Update.....

Our DPW crews will be working on the following roads:

The Roadside mowers will be in the areas of Wellsville, Merryall, and Clatter Valley.

(Expect Delays)

The Tree Crew will be working in various locations around town, cleaning up brush and downed trees.

(Expect delays and possible road closures)

The Sweeping Crew will be working in the areas of Camen Hill. (Expect Delays)

The Gravel Road Maintenance Crew will be working on Judds Bridge. (Expect Delays)

CSR Truck will be out addressing concerns around town; watering, sign maintenance, and trash pick up.

In the Community...



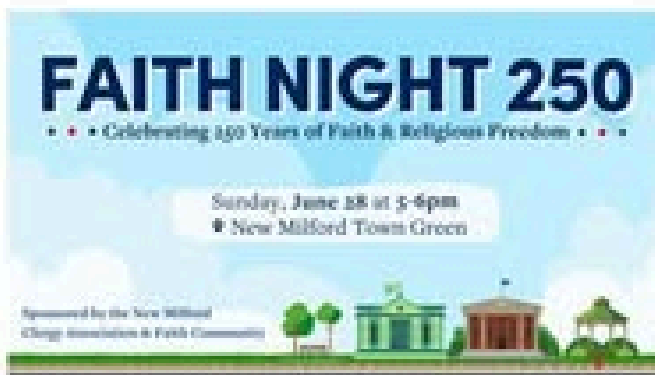
[Tech-Talk Webinar](#)

[Tech-Talk Webinar: Add Audio & Video to Presentations Like a Pro](#)

Wednesday, June 24 - 3:00-4:00 PM

Learn how to enhance presentations with audio and video using Canva, PowerPoint, and Google Slides. Discover how to sync music to slide timing, avoid overlapping, automate playback, and create a seamless viewer experience. Walk away with practical techniques to elevate engagement and deliver polished, professional presentations every time.

To learn more, call NMPL at
860-355-1191

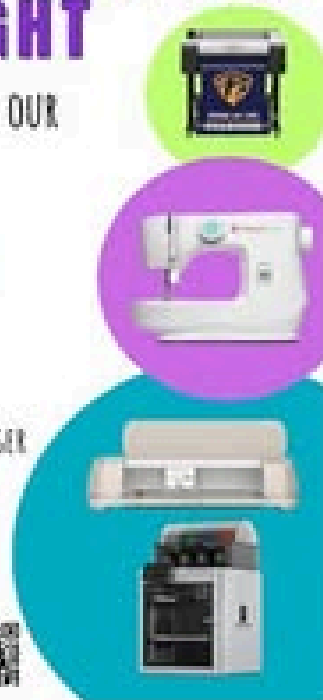


OPEN MAKERSPACE NIGHT

DROP IN AND EXPLORE OUR CREATIVE TECH!

WED, JUNE 24
5:30 - 7:30 PM

- BAMBU 3D PRINTER
- CIRCUT EXPLORE
- SEWING MACHINE & SERGER
- LARGE FORMAT PRINTER
- COLD LAMINATOR
- DIGITAL MICROSCOPE



JULY 1ST—AUGUST 31ST



KIMBERLY FARM

Visit eight of the participating New Milford Businesses & bring your receipts to the Mayor's Office to receive an "I Survived the New Milford Ice Cream Crawl" T-Shirt

Want your flyer featured in our upcoming newsletter?

Contact: KJohnson@newmilfordct.gov