
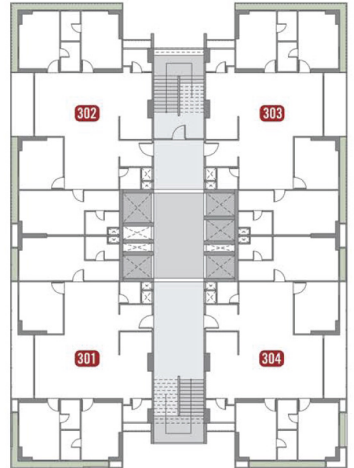


# 4 BHK

UNIT PLAN (TYPE - 1)

-  4 Units On Each Floor
-  East Or West Facing
-  Vaastu Compliant
-  4 Integrated Elevators (OTIS)
-  1 Service Elevator






Area	Sq Mtr.	Sq.Ft.
<b>Carpet Area</b>	178.65	1923
<b>Built-up</b>	193.00	2075
<b>Super Built-up</b>	353.00	3800



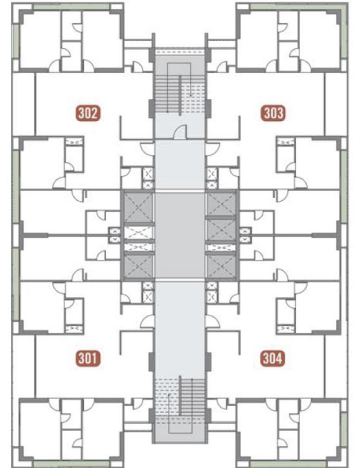
# 4 BHK

UNIT PLAN (TYPE - 2)



-  4 Units On Each Floor
-  East Or West Facing
-  Vaastu Compliant
-  4 Integrated Elevators (OTIS)
-  1 Service Elevator

Area	Sq Mtr.	Sq.Ft.
<b>Carpet Area</b>	178.65	1923
<b>Built-up</b>	193.00	2075
<b>Super Built-up</b>	353.00	3800



# SPECIFICATIONS



## STRUCTURE

- Earthquake-resistant RCC frame with Seismic Level 3 quality controls.



## FLOORING

- Premium branded vitrified /ceramic tile flooring.
- Glossy Finish: Living room, Dining, Kitchen, Store areas passage.
- Matt Finish: All Bedrooms.
- Anti-skid finish in all bathroom flooring.
- All balconies with premium flooring.



## WASH AREA

- Anti Skid finish: flooring with dado of ceramic/ glazed tile Up to sill level.



## KITCHEN

- Smart marble counter top sandwich platform.
- Sink: High-quality stainless-steel sink from premium brands.
- Smart marble dado up to lintel level on walls above counter.



## DOORS

- Doors secured with high-end locking technology.
- Main Door: FRD & veneer finish with 7.5 ft height (Fire Resistant Door).
- Other Doors: Solid Core Flush Doors with laminate.
- Door Frame-Teakwood or equivalent frames.



## WINDOWS

- Premium slimline aluminium windows with UV-resistant glass.



### **PLUMBING WORK**

- Pipes: CPVC/UPVC water supply lines.
- Advanced Geberit HDPE Silent Drainage System for Solid Waste Management
- Fitting: Jaguar or equivalent premium accessories.



### **AIR CONDITIONER**

- AC piping sleeves: AC piping provision in all bedrooms, Dining and living room.



### **ELECTRICAL**

- Power Backup: Designed for 500–750 KW supply with 100% DE backup for common areas.
- Wiring: Concealed copper wiring with fire retardant insulation  
Individual Energy Meter for Every unit.
- Premium ELCB & MCB with concealed distribution box.



### **PAINT**

- External walls: Textured with Acrylic paint.
- Internal walls: Gypsum plaster with putty finish/ Cement mala plaster.



### **SAFETY & SECURITY**

- CCTV: 24/7 Surveillance Cameras Across the property.
- Fire: Designated floors for safe assembly during emergencies.
- Fire Resistant main doors for all apartments.
- Elevators-High Speed Access controlled Lifts.
- Specially designed skip floors and dedicated refuge areas for fire Safety and emergency access.



### **ESSENTIAL UTILITIES & SUSTAINABILITY**

- A Sewage Treatment Plant (STP) with a capacity of 365 KL per day Has been provided to treat and recycle wastewater, Ensuring a sustainable supply for irrigation and flushing while Conserving groundwater.
- In addition, rainwater harvesting, a convenient garbage chute system, And solar energy solutions further strengthen the project's commitment To eco-friendly and sustainable living.