

The Recycler

Oregon's Recycling System is Getting an Upgrade—

Here's What You Need to Know!

Oregon's Plastic Pollution and Recycling Modernization Act (RMA) will improve recycling and create a new system that shares the cost of recycling. Local governments, recycling companies, and the producers of packaging and paper products will all help fund recycling programs.

What You Can Expect

Expect changes to your recycling list in the next few years. The facilities that sort your recycling are upgrading to improve sorting. Recycling facilities will have more tracking and transparency. This will help ensure your recyclables find a new life.

Why This Matters

The RMA aims to improve recycling by bringing consistency, transparency, and new funding to the system. This new system is designed to be easier, more effective, and trustworthy, no matter where you live in Oregon.

What Can You Do?

Keep recycling! Every time you recycle correctly, you make a difference.

Visit www.Sanipac.com to stay informed about local recycling updates and learn how you can help reduce waste in our community.

**We're excited about what's coming -
Let's recycle better, together!**



COMMINGLE RECYCLE INSTRUCTIONS:

All recycling must be clean! Separating recyclables from your trash reduces the amount of waste that ends up in landfills, saves energy and reduces emissions!

INCLUDE ONLY THE FOLLOWING ITEMS:



PLASTIC

Bottles, round containers, buckets, and rigid plant pots
Caps OK if screwed on. All items must be 2 inches by 2 inches or larger.



METAL

Aluminum and steel cans, and scrap metal
Less than 10 pounds and 18 inches.



CARDBOARD AND CARTONS

Flattened cardboard, packaging boxes, and food and beverage cartons
Pizza boxes must be empty with no food residue.

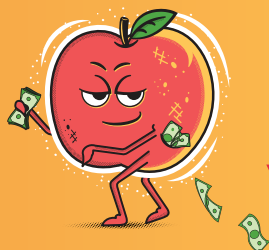


PAPER

Newspaper, magazines, office paper, paper egg cartons, mail, paperback books, paper bags, and non-metallic gift wrap

 **We Recycle**

The opportunity to recycle is available for all residents with waste hauling service and businesses.
[OAR_340-090-0030, 340-090-0040]



To save money and help your perishables last as long as possible go to
www.DontLetGoodFoodGoBad.org
to learn more.



MONSTER

IN YOUR CLOSET?



DESKTOPS



LAPTOPS



PRINTERS



TABLETS



KEYBOARDS



MICE



TVs/MONITORS

Electronics Disposal Ban

Electronic waste is prohibited from disposal in the garbage or at disposal sites such as landfills, incinerators, and transfer stations.

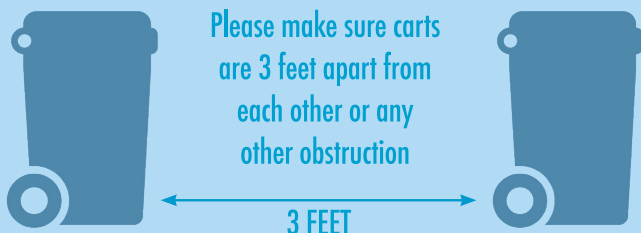


oregon E-CYCLES
oregonecycles.org

Oregon E-Cycles: Free Recycling for Computers, Monitors, Desktop Printers and TVs
www.oregonecycles.org
1-888-532-9253

If your television, computer, monitor, or printer is in working condition please consider donating, upgrading, or repairing it before taking them for e-cycling.

Please remember your carts may be placed out no earlier than 7:00pm on the day prior to your regularly scheduled collection, and empty receptacles must be removed from curbside no later than midnight on the day of collection.



Multi-Family tenants are provided the opportunity to recycle in Oregon through landlord tenant law:
https://oregon.public.law/statutes/ors_90.318

YARD DEBRIS & KITCHEN COMPOSTING

Place in your gray yard debris cart anything that grows above the ground. Including: fruits, vegetables, coffee grounds, plate scrapings, meat, bones, dairy products, baked goods, kitchen trimmings, grass, leaves, branches up to 4" in diameter, brush, fruit tree discards, and vegetation.

CLOSE THE LID
120 LBS LIMIT
NO DIRT OR ROCKS
NO BAGS

NO PET WASTE
NO POISON OAK
NO COMPOSTABLE WARES
(PLATES, SILVERWARE, CUPS)



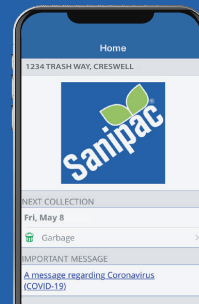
P.O. Box 10928 Eugene, OR 97440
541-736-3600 sanipac.com

NEVER MISS YOUR COLLECTION DAY AGAIN!

With our Sanipac Mobile App you can:

- Sign Up for waste collection reminders
- Receive Service Alerts for collection delays
- Search how to properly dispose of materials

Download it for free at the Apple or Android store.



HAUL-i-DAYS

If your pick up day falls on or following one of these holidays, your pick up will be one day later ending with Friday's pick up being done on Saturday. Example: Thanksgiving Day only affects Thursday and Friday customers.

New Years Day
Memorial Day
4th of July
Labor Day
Thanksgiving Day
Christmas Day

SAVE RESOURCES AND MONEY!

Harvesting, mining raw materials, processing, and manufacturing new merchandise is responsible for **32%** of greenhouse gas emissions. Visit the websites below to find inspiration for waste prevention in your life.

www.goodwill.org • www.svdps.org
www.bringrecycling.org • www.nextsteprecycling.org
www.habitatlane.org • www.extension.oregonstate.edu



Printed on recycled paper