

# The Recycler

**Sanipac is ready to help businesses reach their goals to reduce contamination.**

Use this handout to share with your staff and clients. If you want more help to reach your goal, give our office a call to get more tips.



**YES**

## COMINGLE— Rinsed out items, DO NOT BAG items



### PLASTIC

Bottles, round containers, buckets, and rigid plant pots. Caps OK if screwed on. All items must be 2 inches by 2 inches or larger.



### METAL

Aluminum and steel cans, and scrap metal. Less than 10 pounds and 18 inches.



### CARDBOARD AND CARTONS

Flattened cardboard, packaging boxes, and food and beverage cartons. Pizza boxes must be empty with no food residue.



### PAPER

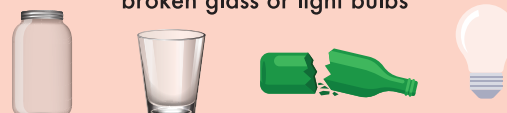
Newspaper, magazines, office paper, paper egg cartons, mail, paperback books, paper bags, and non-metallic gift wrap.

## X Common Contaminants

**NO** Styrofoam, clamshells, shredded paper, bagged recycling, items with food or beverages, clothes, shoes, small appliances, container lids, Aerosol cans, Aluminum foil, no plastic film or plastic bags

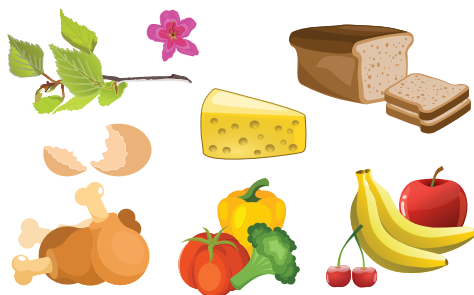


**NO** Canning jars, household cups, broken glass or light bulbs



## FOOD WASTE— DO NOT BAG items

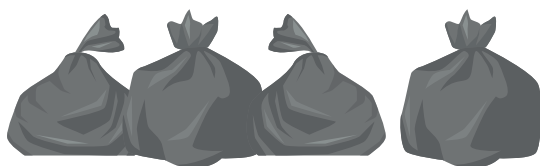
Including food scraps, branches no bigger than 4" in diameter, bones, baked goods, dairy, and plant trimmings.



**NO** liquids, oil, cardboard, napkins, pet waste, compostable cutlery, packaging, rubber bands or too containers



## TRASH—



**NO** Needles, fluorescent light bulbs, batteries, aerosol cans, E-waste, liquids (including paint), oils, tires or bulk items



# MONSTER IN YOUR CLOSET?



Effective January 1st, 2026  
more items can be recycled  
through Oregon E-Cycles.

## Electronics Disposal Ban

Electronic waste is prohibited from disposal in the garbage or at disposal sites such as landfills, incinerators, and transfer stations.

**Oregon E-Cycles:** Free Recycling for common electronics. 1-888-532-9253



TVs



Monitors



Desktops



Tablets



Printers  
\*Excludes 3D



Laptops



VCRs, DVD  
Players \*NEW



Game Consoles  
\*NEW



Keyboard,  
Mouse



Routers,  
Modems  
\*NEW



Cable Receivers,  
Digital Converter  
Boxes \*NEW



Music  
Players  
\*NEW

If your electronics are in working condition please consider donating or repairing the items before taking them for e-cycling.



## HAUL-i-DAYS

If your pick up day falls on or following one of these holidays, your pick up will be one day later ending with Friday's pick up being done on Saturday. Example: Thanksgiving Day only affects Thursday and Friday customers.

**New Years Day**  
**Memorial Day**  
**4th of July**

**Labor Day**  
**Thanksgiving Day**  
**Christmas Day**



## OFFICE REMODEL OR CLEANUP PROJECT?

We offer roll off service to Eugene, Springfield, Creswell, Veneta, and the surrounding areas. We can usually have a roll off delivered to your job site within 24 hours. Please call us for availability at 541-736-3618.

**Need Junk Removal? Call 541-736-3600**

**Recycling can save your business money on your trash bill.** Please let us know if you'd like to increase your recycling services. We are also available to perform a waste audit for your business to let you know what materials you are throwing away most. Call us at 541-736-3600.

### Tips for effective Commercial Recycling:

- Regularly distribute educational materials to those using the container.
- Post clear, up-to-date signage near containers.
- Maximize space by breaking down boxes.

Please give us a call if you would like to discuss options for your business!

## Helpful Recycling Information & Resources

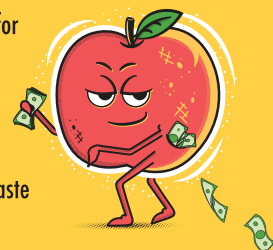
Making new products uses energy and creates pollution. Reduce your waste volume by keeping materials out of the landfill, donating, and shopping at reuse stores. Below are some helpful websites for waste prevention, reuse, recycling, and composting in our area.

[www.goodwill.org](http://www.goodwill.org) • [www.svdps.org](http://www.svdps.org) • [www.nextsteprecycling.org](http://www.nextsteprecycling.org)  
[www.materials-exchange.org](http://www.materials-exchange.org) • [www.bringrecycling.org](http://www.bringrecycling.org)  
[www.habitatlane.org/restore](http://www.habitatlane.org/restore) • <https://sqbiofuels.com/>  
[BurritoBrigade.org](http://BurritoBrigade.org) • [FoodForLaneCounty.org](http://FoodForLaneCounty.org)

## JOIN OTHER BUSINESSES AND BE PART OF THE SOLUTION TO STOP WASTED FOOD.

An estimated 40% of all food produced or imported for consumption in the US is never eaten. Learn more about reducing food waste at <https://dontletgoodfoodgobad.org/>

Contact Sanipac if your business is interested in commercial composting, or how to keep your food waste free of contamination. [Sanipac.com/services](http://Sanipac.com/services)



### Interested in Home Composting?

OSU's extension services provide free home composting workshops in Lane County. <https://extension.oregonstate.edu/lane>

### Working on a Construction Project?

Shop supplies at Bring Recycling or invite Bring to visit your project site! They have programs to help with recycling and material recovery. <https://bringrecycling.org/services/consulting/construction-materials-recovery-and-reuse-program/>

Multi-Family tenants are provided the opportunity to recycle in Oregon through landlord tenant law: [https://oregon.public.law/statutes/ors\\_90.318](https://oregon.public.law/statutes/ors_90.318)



P.O. Box 10928 Eugene, OR 97440  
541-736-3600 [sanipac.com](http://sanipac.com)



Printed on  
recycled paper