

# The Recycler

## Wasting Food Wastes More Than Food!

The food supply chain is complex and generates significant greenhouse gas emissions. When food is wasted, the resources used to grow, harvest, process, transport, store, and cook that food are wasted too. (epa.gov)

Households across the state are reducing food spoilage with tips and tricks that make a big difference. Reducing food spoilage saves real money and helps to save resources.

### 1) Plan ahead

Plan out meals for a few days or a week so you only buy what you need.

### 2) Store Food properly

Not all foods can be stored the same. Learn more about optimal food storage at <https://savethefood.com/storage>.

### 3) Freeze before food goes bad

Freezing food helps extend its life.

### 4) Get Creative

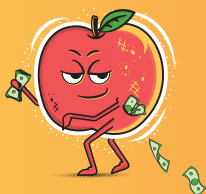
Use your imagination to creatively use up leftovers like soups, casserole, salads, etc. Incorporate a fun theme, Wasteless Wednesdays, Leftover Buffet one day a week for dinner.



## JOIN OTHERS AND BE PART OF THE SOLUTION TO STOP WASTED FOOD.

An estimated 40% of all food produced or imported for consumption in the US is never eaten. Learn more about reducing food waste at [dontletgoodfoodgobad.org](http://dontletgoodfoodgobad.org)

Whole wheat flour should be kept in the fridge?! Learn more about optimal food storage at [savethefood.com/storage](http://savethefood.com/storage)



FOOD SCRAPS can be mixed with YARD WASTE



## Interested in FOOD PRESERVATION?

Go to [extension.oregonstate.edu/lane](http://extension.oregonstate.edu/lane) and click on Nutrition Education to learn more information or find local workshops.



Oregon State University  
Extension Service  
Lane County



**NO BATTERIES IN SANIPAC CONTAINERS.**

Check our app to learn where to dispose.

# MONSTER

IN YOUR CLOSET?



Effective January 1st, 2026  
more items can be recycled  
through Oregon E-Cycles.

## Electronics Disposal Ban

Electronic waste is prohibited from disposal in the garbage or at disposal sites such as landfills, incinerators, and transfer stations.



TVs



Monitors



Desktops



Tablets



Printers  
\*Excludes 3D



Laptops



Game Consoles  
\*NEW



VCRs, DVD  
Players  
\*NEW



Keyboard,  
Mouse



Routers,  
Modems  
\*NEW



Cable Receivers,  
Digital Converter  
Boxes \*NEW



Music  
Players  
\*NEW



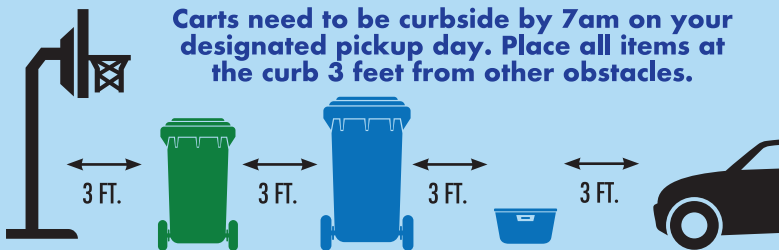
**oregon  
E-CYCLES**  
oregonecycles.org

## Oregon E-Cycles:

Free Recycling for  
common electronics.  
1-888-532-9253

If your electronics are in  
working condition please  
consider donating or  
repairing the items before  
taking them for e-cycling.

Carts need to be curbside by 7am on your  
designated pickup day. Place all items at  
the curb 3 feet from other obstacles.



## HAUL-i-DAYS

If your pick up day falls on or following one of  
these holidays, your pick up will be one day later  
ending with Friday's pick up being done on  
Saturday. Example: Thanksgiving Day only  
affects Thursday and Friday customers.

New Years Day  
Memorial Day  
4th of July  
Labor Day  
Thanksgiving Day  
Christmas Day

## YARD DEBRIS & KITCHEN COMPOSTING

Place in your gray yard debris cart anything that grows above the ground.  
Including: fruits, vegetables, coffee grounds, plate scrapings, meat, bones,  
dairy products, baked goods, kitchen trimmings, grass, leaves, branches up  
to 4" in diameter, brush, fruit tree discards, and vegetation.

**CLOSE THE LID**  
**120 LBS LIMIT**  
**NO DIRT OR ROCKS**  
**NO BAGS**

**NO PET WASTE**  
**NO POISON OAK**  
**NO COMPOSTABLE WARES**  
**(PLATES, SILVERWARE, CUPS)**

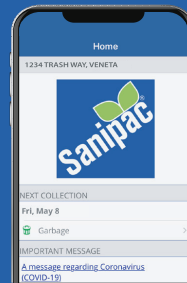
In the City limits of Veneta, yard debris will be picked up  
weekly during the months of April, May, and November.

# NEVER MISS YOUR COLLECTION DAY AGAIN!

With our Sanipac Mobile App you can:

- Sign Up for waste collection reminders
- Receive Service Alerts for collection delays
- Search how to properly dispose of materials

Download it for  
free at the Apple  
or Android store.



## COMMINGLE RECYCLE INSTRUCTIONS:

All recycling must be clean! Separating  
recyclables from your trash reduces the  
amount of waste that ends up in landfills,  
saves energy and reduces emissions!

**INCLUDE ONLY THE FOLLOWING ITEMS:**



### PLASTIC

Bottles, round containers,  
buckets, and rigid plant pots  
Caps OK if screwed on. All items  
must be 2 inches by 2 inches or  
larger.



### METAL

Aluminum and steel  
cans, and scrap metal  
Less than 10 pounds and  
18 inches.



### CARDBOARD AND CARTONS

Flattened cardboard,  
packaging boxes, and  
food and beverage cartons  
Pizza boxes must be empty with  
no food residue.



### PAPER

Newspaper, magazines,  
office paper, paper egg  
cartons, mail, paperback  
books, paper bags, and  
non-metallic gift wrap

## COMMON CONTAMINANTS:



**X** Bagged  
Recycling

**X** Food &  
Beverages



**X** Styrofoam

**X** Clamshells



**X** Shredded  
Paper



**X** Textiles  
(Clothes, Shoes)



P.O. Box 10928 Eugene, OR 97440  
541-736-3600 sanipac.com



Printed on  
recycled paper