

eMaps open eir Civil Engineering Infrastructure Service

User Help (19/11/2019)

1. Introduction

open eir¹ is the largest wholesale telecommunications operator in the Republic of Ireland with the most extensive network both in terms of capacity and geographic reach. Our civil engineering infrastructure (CEI), consisting of underground ducts and telegraph poles, accommodates the fiber and copper cables needed to deliver nationwide fixed, mobile and broadband services.

eMaps open eir Civil Engineering Infrastructure Service provides a simple web client that enables users to view and request maps of open eir's civil engineering infrastructure. The information provided is compiled from open eir's passive access records (PAR) and meets requirements from telecommunications operators, other utilities, government bodies, and the construction industry.²

The service is publicly available over the Internet with user self registration and self service. To access follow the URL link below.

- <https://cei.openeir.ie>

¹ open eir is a trading name of eircom Limited, Registered as a Branch in Ireland Number 907674, Incorporated in Jersey Number 116389. Branch Address: eircom Limited, 2022 Bianconi Avenue, Citywest Business Campus, Dublin 24, D24 HX03

² Whilst every effort has been made to ensure the accuracy of the information and material provided, open eir assumes no responsibility for, gives no guarantees, undertakings or warranties concerning the accuracy, completeness or up to date nature of the information provided and does not accept any liability whatsoever arising from any errors or omissions.

2. Registration, user profile and login

First time users register by clicking the button at the bottom of the Sign in page.



Sign in to eMaps open eir Civil Engineering Infrastructure Service

This service provides a simple web client that enables users to view and request maps of open eir's civil engineering infrastructure.

Username


Password

[I've forgotten my password](#)

Accept [Terms & Conditions](#)

Not yet registered?

Follow the instructions accepting the Terms and Conditions and completing the information requested on the Register Now page. When completed press the 'Activate' button and the system will then send an email to the user containing an account activation link.



Register Now

Please note that all fields are mandatory.
Special chars: -_>()&"'áéíóúÁÉÍÓÚ**

Email Address

Confirm Email Address

Password

Password must be at least 6 characters long and contain 1 number and 1 alphabetic character.

Confirm Password

Mr

First Name

Last Name

Company

Contact Number


Address

Security Question

Security Answer

After activation you can log into the system by entering your email address and password, ticking the terms and conditions box and pressing the login button.

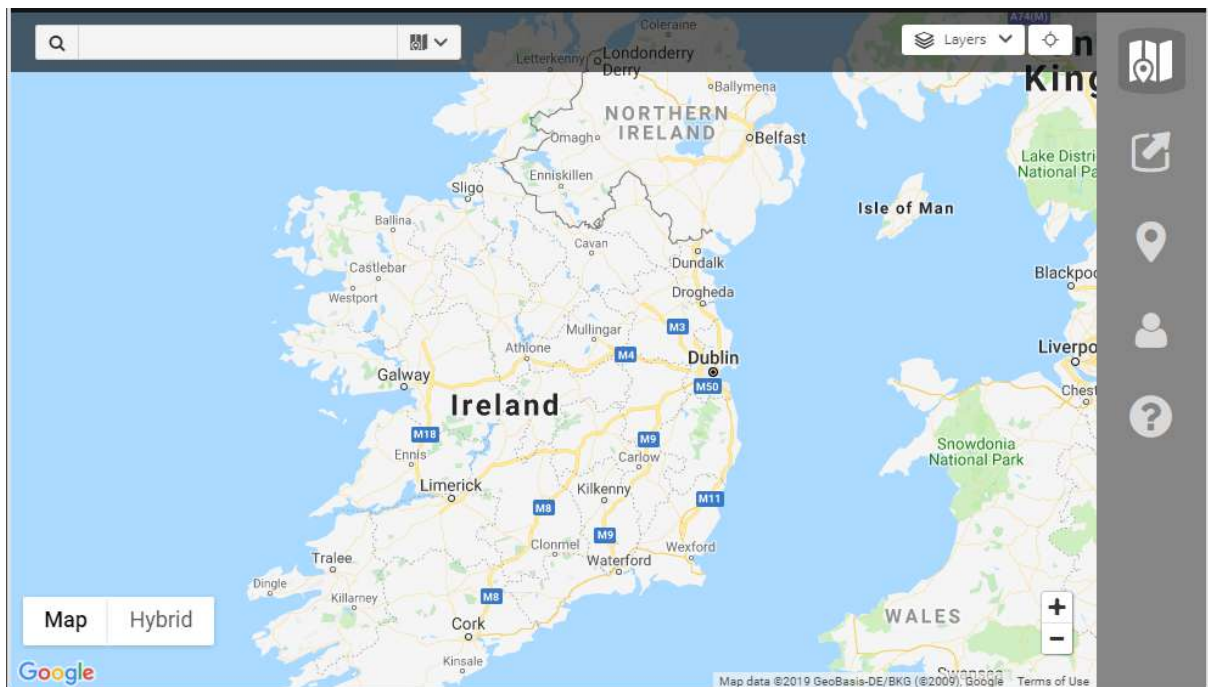
If you have lost your password you can click the 'I've forgotten my password' link. This opens the Reset your password dialogue.

Reset your password 



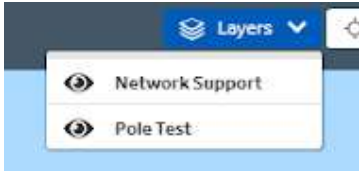
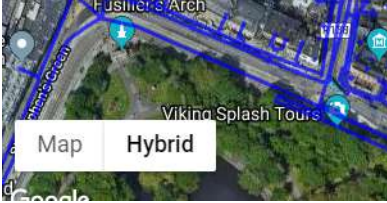

Password must be at least 6 characters long and contain 1 number and 1 alphabetic character.

3. Main Screen

The main display shows a Google road map view. Search and other functions are provided as dialogue fields / buttons. As a user zooms into local level views open eir's civil engineering infrastructure information appears.

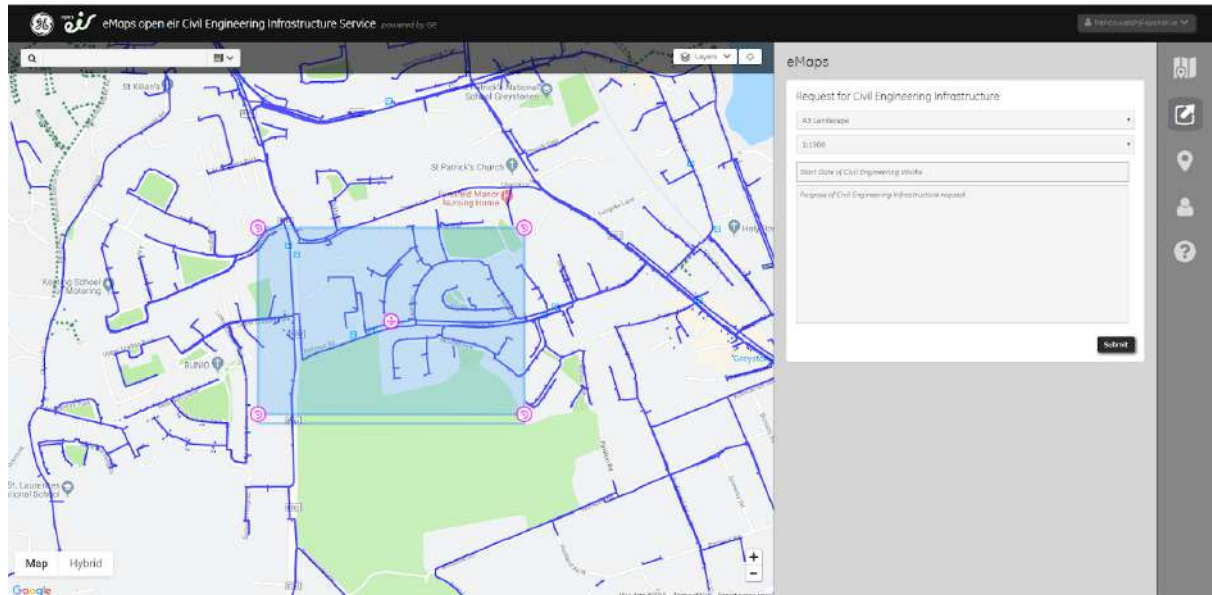


3.1. The main map view

	<p><u>User Icon</u> Clicking on the user icon located to the right of the title bar above the Main Screen gives 2 choices;</p> <ul style="list-style-type: none"> • Edit Profile - Opens the Edit User Profile dialogue window. • Sign Out - Logs out of the eMaps CEI Service.
	<p><u>Address Search</u> Dialogue field located left and just below the title bar. You can use the free text search tool to locate an address of interest. The list of results is displayed as you type.</p>
	<p><u>Layers drop down</u> Drop down located right and just below the title bar. Toggling on / off the:</p> <ul style="list-style-type: none"> • Network Support displays / conceals the view of open eir's civil engineering infrastructure. • Pole Test displays / conceals the view of open eir's pole data.
	<p><u>Map / Hybrid</u> Buttons located at the bottom left of the window. The Map default option displays a Google background roads map. Clicking the Hybrid option changes to a Google satellite photographic background.</p>
	<p><u>Pan and Zoom</u> Panning on the map is controlled by clicking and dragging or swiping as typically found on web mapping applications. The +/- buttons, located on the bottom right of the window, lets users zoom in / out to different level map views.</p>

3.2. The eMap request tab

Clicking the eMaps tool allows users create a PDF plot of an area of interest showing open air's civil engineering infrastructure.



Once you have found the area of interest open the request tab as shown above.

- The shaded area in the main map shows the plot area. This can be adjusted by clicking on the area and moving / rotating as required.
- In the eMap dialogue;
 - Select the layout output sheet orientation
 - Select the layout output scale
 - Enter the relevant date
 - Add the reason for the civil engineering infrastructure map request
 - Press the Submit button

Check your inbox for returned email with attached PDF civil engineering infrastructure eMap plot.

3.3. The Coordinate search tab

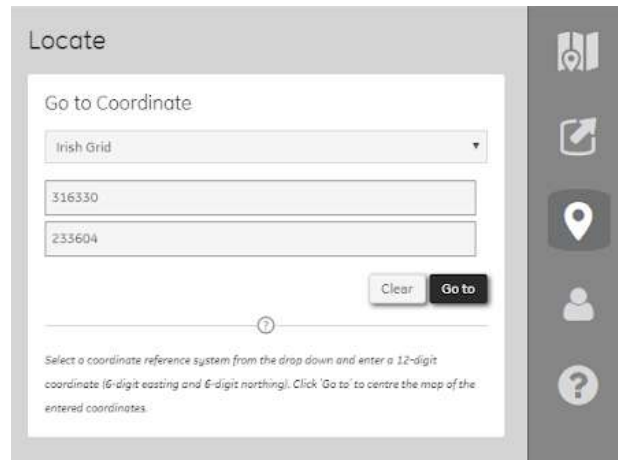
Opening the coordinate search tab allows you to enter location coordinates and go to that location in the map view.

- Select the coordinate system
 - 1965 Irish Grid (Eastings / Northings in Meters)³
 - WGS 84 (Longitude / Latitude in decimal degrees).⁴

³ TM65 / Irish Grid -- Ireland (EPSG:29902)

⁴ WGS 84 - World Geodetic System 1984 (EPSG:4326)

- Enter the Eastings or Longitude and Northings or Latitude values.
- Pressing the ‘Go To’ button will center the main map view on the location defined.



Locate

Go to Coordinate

Irish Grid

316330

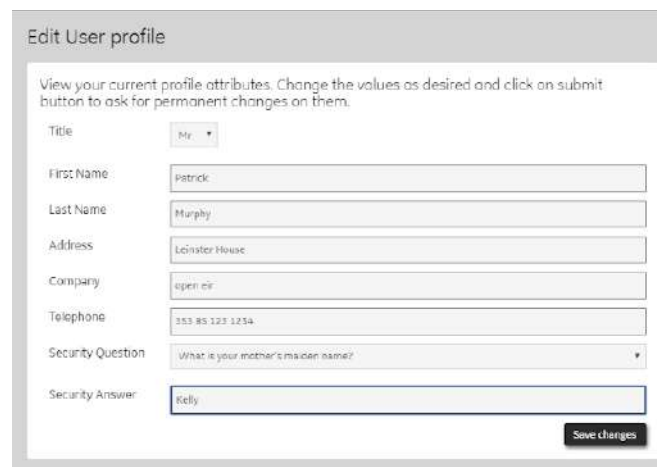
233604

Clear Go to

Select a coordinate reference system from the drop down and enter a 12-digit coordinate (6-digit easting and 6-digit northing). Click 'Go to' to centre the map of the entered coordinates.

3.4. The User settings Tab

Selecting the user settings tab opens the Edit User Profile dialogue, see the example below.



Edit User profile

View your current profile attributes. Change the values as desired and click on submit button to ask for permanent changes on them.

Title

First Name

Last Name

Address

Company

Telephone

Security Question

Security Answer







Save changes

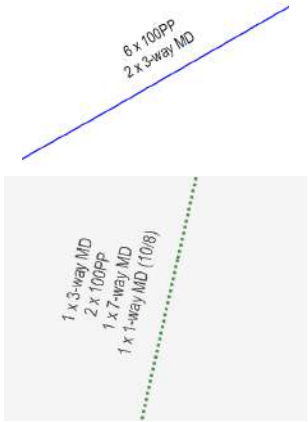
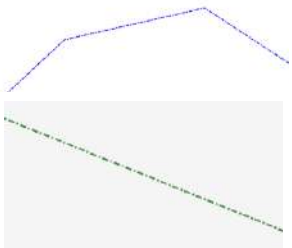

3.5. Help

This tab open the user help document.

4. Appendix

4.1. Object Description and Symbols

Object	Description	Symbol
Building	Displays an outline of exchange (central office) buildings. <ul style="list-style-type: none"> Annotation shows the exchange name. 	
Cabinet	Displays location of roadside cross connection cabinets. <ul style="list-style-type: none"> Annotation shows the exchange code and cabinet reference number. 	
Underground Utility Box	Underground Utility Box (Chamber / Joint Box / Manhole / Vault) locations. The symbols used indicate box type, see main types below. <ul style="list-style-type: none"> Colour indicates status, blue In Service / green Proposed. Annotation shows the box number. 	
	Buried Box The cover / top is under ground level hidden by soil or road surface...	497 
	Chamber Typically medium and large utility boxes (Newer records)	496 
	Handhole Typically small utility boxes	 1266
	Manhole Typically medium and large utility boxes (Older records)	 2468

<p>Underground Route</p>	<p>Track indicating approximate run of trenches containing buried conduits (pipes / duct) and telecommunication cables.</p> <ul style="list-style-type: none"> • Colour indicates status, solid-blue In Service / dashed-green Proposed. • Annotation indicates the number and sizes of conduits (duct) laid in the trench. 	
<p>Aerial Route</p>	<p>Track indicating approximate run of overhead telecommunication cables.</p> <ul style="list-style-type: none"> • Colour indicates status, dot-dashed-blue In Service / dot-dashed-green Proposed. 	
<p>Telegraph Poles</p>	<p>Displays locations of telegraph poles recorded in the pole test database.</p>	

4.2. Browser Support

The application has been tested with the following web browsers:

- Microsoft Internet Explorer version 11.0.9600.19180
- Microsoft Edge Version 38.14393.268.0
- Mozilla Firefox version 63.0.3 (64 bit)
- Google Chrome version 71.0.3578.75 (64 bit)
- Apple Safari (OSX 10.1.2, IOS 10.2.1)