

**RECOVERY
BEYOND**



2025 ANNUAL REPORT



Table of Contents

- 01 - MEMBER TESTIMONIALS**
- 02 - A LETTER FROM THE EXECUTIVE DIRECTOR**
- 03 - WHO WE ARE**
- 04 - OUR MISSION & VISION & VALUES**
- 05 - 2025 PROGRAM HIGHLIGHTS**
- 06 - 2025 PROGRAM HIGHLIGHTS CTD.**
- 07 - 2025 BY THE NUMBERS**
- 08 - 2025 FINANCIAL REVIEW**
- 09 - CELEBRATING OUR DONORS**
- 10 - CELEBRATING OUR COMMUNITY PARTNERS**
- 11 - 2025 TRAIL MAP**
- 12 - 4 WAYS TO GET INVOLVED**
- 13 - 4 WAYS TO VOLUNTEER**
- 14 - 2026 STAFF & PEER ADVISORY COUNCIL**
- 15 - 2026 BOARD OF DIRECTORS**
- 16 - PHOTO COLLAGE**
- 17 - CONTACT US**

Member Testimonials

“Camp RB was truly an incredible event. You and your team did such an outstanding job bringing everything together and running the program so seamlessly. It was clear how much effort, thought, and care went into making it all happen, and it really showed in every detail.

The event wasn't just well-organized—it was meaningful. It felt like it genuinely brought people together, creating a safe, supportive, and welcoming space where attendees could connect and feel a true sense of community. That experience meant so much to everyone who participated and left a lasting impact.

Thank you for everything you did to make Camp RB such a success. The dedication and heart you poured into it made all the difference.”

“What Recovery Beyond is doing by providing an active outdoor community for those in recovery is important and meaningful, and to see it in action up close and personal like I got to do at the Scavenger Hunt was impactful. I know it takes money to keep programs like this running and it brings me joy to help out a little bit.”

“Recovery Beyond has helped me build meaningful connections with people who truly understand recovery. I've met so many great people through Recovery Beyond and having community and support has been incredibly important and helpful in my journey.”

A Letter from The Executive Director

As I reflect on my time at Recovery Beyond since I started in December, I keep coming back to a simple moment that happens again and again in our community.

It's the moment before something begins.

Someone arrives, sometimes early or unsure, and pauses. Maybe they're sitting in their care of standing just off to the side, wondering if they'll fit, wondering if they're ready.

And then someone walks up and says, "Hey, glad you're here."

It's a small moment, But it represents something much bigger.

Because recovery isn't just about what we leave behind, it's about what we rebuild. Connection. Confidence. A sense of belonging. A life that feels full again.

That is what this community makes possible.

Over the past year, we have continued to grow, not just in numbers, but in depth. Our membership expanded over 600 individuals, our programs increased to over 200 events, and more people than ever found their way into this community. But what stands out most is not the growth itself, It's what happens because of it!

We see people arrive looking for something different. They come back. They begin to trust themselves again.

And over time, many step into something even more meaningful...they start supporting others. They volunteer. They lead. They become the person they once needed when they first showed up.

This is how Recovery Beyond works.

Belonging leads to growth. Growth leads to purpose. And purpose leads people to give back, creating a cycle that strengthens the entire community. That cycle is only possible because of the people who make it real.

To our volunteers: you are the ones creating space for others to feel seen, welcomed, and supported. To our donors and partners: your generosity makes it possible for this community to grow and reach those who are still searching for a place to belong. To our board: thank you for your steady guidance and belief in this work. And to our members: your willingness to show up, again and again, is what brings this community to life.

As we look ahead, the opportunity in front of us is clear. For every person who has found Recovery Beyond, there are many more who are still looking for connection, for support, and for a way forward.

What we have built together works. Now the question is how many more people can we reach.

Recovery Beyond is not something created by a small team, it is something built by a community. Every welcome, every shared experience, every act of encouragement contributes to something larger than any one of us.

If this community has impacted you in any way, you are part of that story.

Thank you for being part of what makes this possible.

With Gratitude,
David Uhl
Executive Director

Who We Are

Recovery Beyond is a nonprofit community redefining what recovery can look like—rooted in connection, built through shared experience, and powered by the outdoors.

We believe that recovery from substance use isn't just about sobriety—it's about rediscovering joy, purpose, and belonging. Our approach centers on building strong, supportive relationships through healthy, life-giving activities that inspire growth and healing.

We offer access to a wide range of experiences for people actively in recovery, from local meetups and monthly community events to guided group adventures like hiking, kayaking, snowshoeing, and even mountaineering. Whether it's fishing at a quiet lake or the challenge of a summit climb, our events are designed to spark connection, build confidence, and celebrate the journey of recovery.

In addition to outdoor programming, we also provide individual peer support to help those needing a little more assistance in their personal recovery plans. Our goal is to walk alongside our members, wherever they are in their recovery journey.

At Recovery Beyond, we believe the outdoors and recovery are for everyone! Thanks to the generosity of our donors and the strength of our volunteer community, membership remains free and our events are low or no-cost to our members.

At Recovery Beyond, we're not just getting through—we're getting outside, getting connected, and getting back to life.

Our Mission

Our mission is to support individuals in recovery from substance use by building community, fostering connection, and providing meaningful outdoor experiences.

Our Vision

Recovery Beyond will be a leader in long-term recovery support, known for building connected communities and creating access to transformative outdoor experiences for people overcoming substance use.

Our Values

Member-Centered

We're dedicated to supporting our members throughout their recovery journey.

Excellence and Enjoyment

Pursuing professionalism while prioritizing enjoyment and fun in all endeavors.

Graceful Leadership

Leading with grace and forgiveness, balanced with accountability when needed.

Transparency and Honesty

Committing to open, honest communication in all interactions.

Belonging and Access

The outdoors and recovery are for EVERYONE.

2025 Program Highlights

Members

Our community grew to 614 members in 2025 — officially reaching into 16 different WA counties: King, Pierce, Kitsap, Thurston, Snohomish, Clallam, Clark, Cowlitz, Grays Harbor, Lewis, Skagit, Whatcom, Yakima, Benton, Spokane, and San Juan!

Recovery Recess

(November)

A day full of play, laughter, and connection! Recovery Recess brought people together for a giant indoor recess at Black Diamond Camp, where the gym came alive with activity. We bounced from ping pong to foosball, basketball to axe throwing, the rappel wall to the ropes course, with a puzzle table for those who wanted something a little quieter. We gathered around the campfire for s'mores, had good snacks, and had lots of time for connection!

North Bend Trail Fest

(October)

Continuing our long-standing support from Scott Sowle, Mountain Running Races waived the \$75 racing fee for any member who wanted to complete the 10k trail run at the North Bend Trail Fest in October. It was a rainy and windy day, but that didn't stop the fun! We had 8 runners and lots of volunteers! In addition, a portion of registration fees for the 30K Trail Race were donated to Recovery Beyond.

Spring Kickoff

(March)

A new tradition bringing our community together to kickoff the outdoor season! 84 people attended as we revealed new events and activities for the coming year – as well as raffled away fun prizes that included new outdoor gear.

Camp Recovery Beyond

(August)

This year, 83 members joined us on the Olympic Coast for a weekend full of connection, laughter, and unforgettable memories. From conversations, the weekend was filled with joy, support, and community. It truly was the best weekend ever!

Friendsgiving Potluck

(November)

Over 65 RB friends and family gathered at Recovery Cafe SODO for what we plan to be our annual Friendsgiving Potluck!

2025 Program Highlights, ctd.

- Hiking
- Mountaineering
- Paddling
- Camping
- Trail Running & Walking
- Beach Combing
- Kite Flying
- Sailing
- Climbing
- Cycling
- Kickball
- Leavenworth Trail Fest
- Bowling
- Forest Bathing
- Nature Walks
- Urban Walks
- Sailing
- Snowshoeing
- Recovery Day at the Mariners
- Camp Recovery Beyond
- North Bend Trail Fest
- Point Defiance. Zoo Visit
- River Float
- Thanksgiving Day 5k
- Avalanche Awareness Training



2025 by the Numbers

Programming with Purpose

In 2025, the team set out to create programming that was both purposeful and intentional in design. This transformation in approach reflects a commitment to shaping initiatives that not only support recovery, but also enhance the overall quality and meaning of life. By year's end, we finished with 614 members.

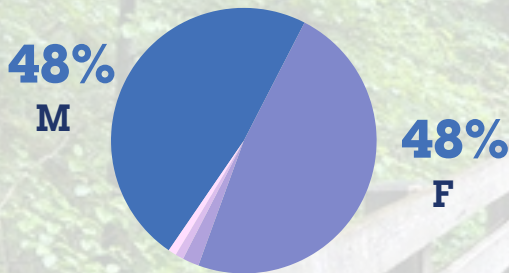
210

Total group activities and events

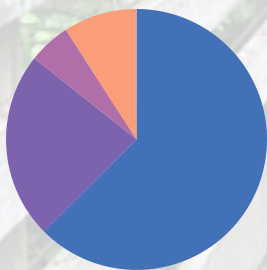
2195

Attendees at activities and events

Who We Serve



48% identify as female



Members by County

384 King County
142 Pierce County
32 Snohomish County
56 Other
43 years- Average Age

Key Success Metrics

MEASURING IMPACT: RECOVERY CAPITAL & MEMBER PROGRESS

Our members complete monthly check-ins and we track their recovery journey using these key metrics:

1. BRIEF ASSESSMENT OF RECOVERY CAPITAL (BARC-10)

A short, 10-question survey that measures the personal and social resources (recovery capital) that support long-term recovery

- Score Range: 6–60
- Score for sustained recovery: 47+
- Our Members' Average Score: 51.3



2. RECOVERY PROGRESS SELF-RATING

Members rate their own recovery progress on a scale of 1–6

Our Members' Average Score: 5.3



3. OUTCOMES RATING SCALE (ORS)

Measures well-being and functioning

- Target Score: 25
- Our Members' Average Score: 27.14



4. CRAVINGS RATING SCALE (CRS)

Assesses the intensity of substance cravings

- Target Score: <10
- Our Members' Average Score: 3,5

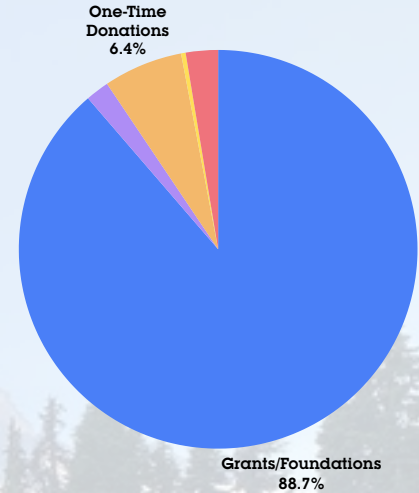


2025 Financial Review

2025 Revenue

Contributions Revenue	
Grants/Foundations	\$632,886
Recurring Donations	\$13,880
One-Time Donations	\$46,185
Total Contributions Revenue	\$692,951
Miscellaneous Revenue	\$2,633
Fundraising Revenue	\$18,903
Total Revenue	\$717,116

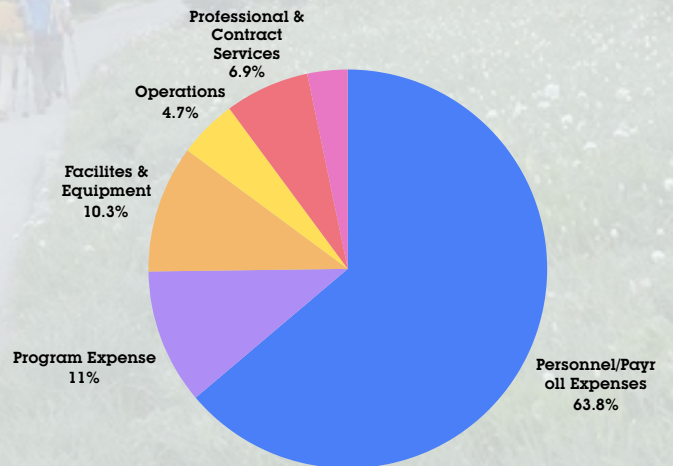
Revenue by Class



2025 Expenses

Personnel & Payroll Expenses	\$397,896
Program Expense	\$68,666
General Expense	\$34,220
Facilities & Equipment	\$64,653
Operations	\$29,425
Professional & Contract Services	\$42,606
Insurance	\$20,225
Total Expenses	\$657,692

Expense by Class



Thank You for Your Support!

We truly could not do what we do without you. Your generous personal contributions keep our programs running, spread hope, and support lifelong recovery in our local community.

Ian & Christy Acker	Thomas & Karen Easton	Melanie Johnson	Emily Riehl
Addiction Battlefield	Cole Eckerman	Esther Jordan	Tarunay Roy
Cedric Akion	Jennifer Edinger	John & Marisol Joynt	Alden Ryno
Tawni Alailima	Laura Eichhorn	Linus Kamb	Amberly Schmitt
Diana Albertson	Stanton Engineering	Matthew Lachner	Edouard Seryozhenkov
Jasmine Albertson	Britany Ferrell	Tony Lamothe	Alex & Alexis Shanoian
Nellie Albertson	Tim File	Brandi Land	Derek Shepherd
Paul Anderson Foundation	Bradley Finegood	Lyn Lauzon	Jonathan Shroyer
Betsy Armstrong	Mark Fisher	Anne Legato	Andrew Simmons
Hilary Ball	Karen Forner	William Lewis	Patricia Simmons
Andrew Beadle	Olga Gaistruk	Robert Lindslov	Kathleen Smith
Mitch & Rosanna Bemet	Leah Frost	Joseph Lindstrom	Bryan & Paula Sohl
Annie Bilotta	Susan Frost	Barbara Luxenberg	Scott Sowle
Janice Bodine	Avery & Alecia Genge	Erin Mauga	Jenny Stanton
Tristan & Krysta Botersong	Bill & Danielle Goodgion	Scott Moran	Gary Stariha
Mariann Bradbum	Ronnie Goodgion	Victor Mueller	Colleen Stephens
Janet & David Bradshaw	Sally Goodgion	Alvin Muse	David Stringer
Brittany Brese	Sophie Goodgion	Andy & Janine Myers	Andrea Suarez
David Bridges	Dennis Grady	Karen Nager	Marcus Taylor
Krissy Brokmeyer	Amanda Gray	Tim Nelson	Jennifer Thomsen
Mark Brown	Eric Greene	Zyndor Ochoa	Tue (TK) Tran
Kim Buike	Nimala Grutzius	Monty Oliver	Megan Tweedy
LaVina Bumer	Felicia Guity	Matt Olsen	Jeffrey Ursino
Tim Bumer	Margery Gullick	Lukas Olsen	Mark & Sue Ursino
Mark & Tonyia Caimes	Gina Haines	Tim Patty	Christian Ursino
Tommy Carpino	Linda Haley	Dawn Payne	David Ursino
Jennifer Casto	Brad Halbach	Mark & Deb Perry	Leanne Ursino
Bobbie Catton	Marcia Hansen	Troy Perry	Lisa Ursino
Brittany Clark	Stephanie Harris	Raul Perez Lopez	Damont Vann
Keri Clark	Louise Harris	Joanne & Manuel Perry	Heather Venegas
David Claunch	John Herrera	Kristy Peterson	WA HCA
Oris Dean	Naomi Herrera	Krysta Peterson	Tom Walsten
Lynne Deskins	Terry & Shari Hill	Monica Pickley	Steve Walton
Andy Dewey	Connie Holloway	Chris Poulos	Alec Weller
Greg & Elisabeth Desroiers	Doug & Renee Holman	Steven & Kristine Pimentel	Monika Whitley
Nancy & Hugh Ditzler	Mark & Carolyne Howley	Mia Priedmore	Evan Williams
Philip Donahoe	Annemarie Jameson	Marshall Reinsch	Tisch Williams
Wayne & Annie Dutton	Huber-Lovins Philanthropy	Taylor Richards	Monica Wynn
Luke Duvall	Jameson Johnson	Jamies Riehl	Edward Yang
			Daisy Yen

Celebrating Our Community Partners

They are the cornerstones of our organizational model who offer support via programming spaces, participant referrals, networking opportunities, and resource sharing. We are so grateful to our community partners for helping us continue to expand our reach and services!

KING COUNTY

AMFM Healthcare | A Positive Alternative | A Supportive Community for All Snoqualmie Valley | Art Alchemy Coaching | Acres of Diamonds | Bhadra Recovery | Boulder Care | City of Issaquah | Evergreen Treatment Services | Hazelden Betty Ford | Holman Recovery Center | Horizon Health | Hotel California (By the Sea) | Ideal Option | Influence the Choice | Issaquah Community Services | Jones Community Solutions | Lighthouse Mental Health | Nourishing Network | Lakeside-Milam | Maple Valley Community Center | NAMI Eastside | New Era Mental Health | Northpoint Recovery | Northpoint Seattle | Nourishing Network | Oxford House Incorporated | Peer Kent | Peer Seattle | Peers Empower Peers | Raging River Recovery Center | Recovery Cafe | Recovery Navigator Program | Roots of Compassion Therapy | Sage Counseling Coaching | Sounds Behavioral Health | The Salvation Army | Together Center | The Sober Curator | Union Gospel Mission | Valley Cities Behavioral Health Care | Valley Defenders | Vashon Youth and Family Services | Washington Recovery Alliance | Washington Alliance for Quality Recovery Residences | We Care Daily Clinics | Weld | Wild Grief

PIERCE COUNTY

Nine Line Veterans Services | On the Road with Partner Cafe | Pierce County Alliance | Pierce County District Court | Prosperity Wellness Center | Newport Healthcare

SNOHOMISH COUNTY

Evergreen Recovery Center | Holman Recovery Center | Lighted Pathways Recovery Solutions | Smokey Point Behavioral Hospital

THURSTON COUNTY

Overhaul-Unrelenting Transfiguration (The O-UT Program) | Supreme Living Community Se4rvices | Wild Grief

2025 Trail Map

RECOVERY BEYOND

OUTDOOR RECOVERY COMMUNITY

Reach Experiences
Challenges & Excursions

CAMP RECOVERY BEYOND
Annual Summer Campout!

Adventures & Play
Outings for Fun & Fitness

Service & Outreach
Projects Helping Meet Local Needs

Training & Education
Safety & Skills / Health & Wholeness

Community Socials
Monthly Gatherings for Friends & Family

Hiking • Backpacking • Mountaineering • Camping • Paddling
Walking & Running • Snow Sports • Team Sports • Art & Music
Fishing • Biking • Sailing • Cooking & Gardening • Recovery Circles

What if recovery was just another word for living?

@recoverybp recoverybp.com

4 Ways to Get Involved

RECOVERY BEYOND

If you believe the power of an outdoor recovery community
can help fuel healthy recovery...

If you believe recovery
can become just another word for living...

Walk this journey with us!

JOIN

If you are in recovery, we provide peer support through outdoor activities and adventures at low or no cost to our members.

VOLUNTEER

A highly valued and essential presence, volunteers help us meaningfully guide and support those living in recovery.

PARTNER

The best community partnerships overlap passions, leverage resources, and enhance impact. Contact us to explore partnering.

DONATE

Support our members and mission through financial and gear donations to our non-profit outdoor recovery community.



recoverybp.org



@recoverybp



(253) 778-6161



1505 NW Gilman Blvd Suite #2
Issaquah, WA 98027

4 Ways to Volunteer



4 WAYS TO VOLUNTEER



recoverybp.org



[@recoverybp](https://twitter.com/recoverybp)

ACTIVITY LEADS

OPEN TO ALL

QUALIFIED LEADERS OF
ACTIVITIES & EVENTS

Activity Leads are qualified and reliable leaders of Recovery Beyond Activities & Events who provide knowledge, skills, planning, and guidance to Recovery Beyond members in a safe and encouraging manner. Commitment varies based on interests and availability.

ACTIVITY HELPERS

OPEN TO ALL

HELPERS SUPPORTING
ACTIVITIES & EVENTS

Activity Helpers are the hands, feet, and hearts that fill in the gaps to help make Recovery Beyond Activities & Events possible! Commitment varies based on interests and availability. Options are available for specific activities or general help around events.

FIRST AID

OPEN TO CERTIFIED ONLY

TRAINED HELPERS SUPPORTING
ACTIVITIES & EVENTS

First Aid Volunteers are trained and certified emergency responders whose presence and skills provide peace of mind and enhance the safety during higher risk Recovery Beyond Activities & Events. Commitment varies based on interests and availability.

PEER GUIDES

OPEN TO MEMBERS ONLY

TRUSTED MEMBERS
HELPING MEMBERS

Peer Guides are trusted and compassionate Recovery Beyond members who help fellow members feel like they belong and are cared about in a real way. This volunteer role is a good step for members who are considering pursuing careers in peer support.

INTERESTED? PLEASE FILL OUT OUR WEBSITE [VOLUNTEER INTEREST FORM!](#)

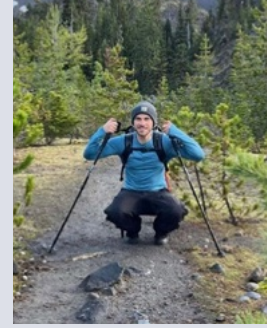
2026 Staff



David Uhl
Executive Director



Mark Adams
Director of Programs



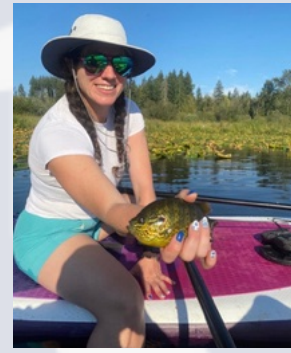
Taylor Richards
Community Partner Specialist



Camille Haley
Program & Marketing
Coordinator



Cristal Borrelli
Member Engagement &
Peer Support Specialist



Manda Graizel
Development Manager

2026 Peer Advisory Council



Zyndor Ochoa
President



Jennifer Edinger
Council Member



Krysta Botersong
Council Member



David Stringer
Council Member



Tabatha Dallman
Council Member



Jessica Valdez
Council Member

2026 Board of Directors



**Mark Perry
President**



**Brad Halbach
Vice President**



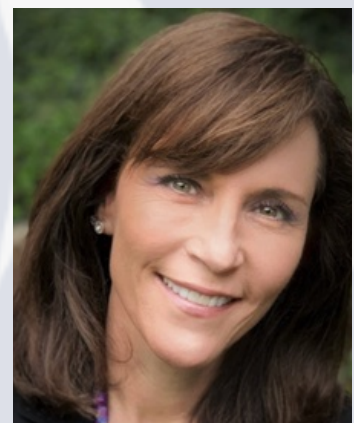
**Amberly Schmitt
Treasurer**



**Joseph Lindstrom
Board Member**



**Ian Acker
Board Member**



**Karen Forner
Board Member**



**Bill Goodgion
Board Member**



**Zyndor Ochoa
Board Member**



CONTACT US

Phone: (253) 778-6161

Email: info@recoverybp.org

Website: www.recoverybp.org

Social Media: [@recoverybp](#)

1505 NW Gilman Blvd,
Suite 2, Issaquah, WA 98027