



CHIEF'S CHAIR

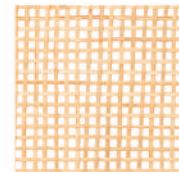
PRODUCT CODE: ST-ACR 01 A

MATERIALS: TEAK WOOD ARMREST & LEGS, UPHOLSTERED SEAT,
TEAK WOOD FRAME WITH CANE WEAVE HEADREST

MATERIAL FINISH SAMPLE:



BASE FINISH



CANE WEAVE PATTERN

OVERALL DIMENSION: 24" X 31" X 34"
61cm x 79cm x 86cm

SEATING HEIGHT: 16.5" (41cm)

ARMREST HEIGHT: 23" (59cm)



ALTERNATE FINISH: OAK WOOD

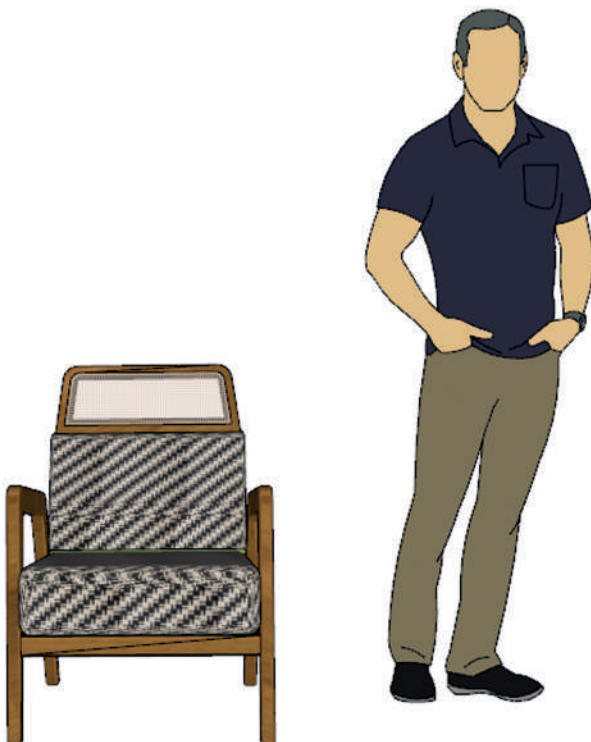


IMAGE FOR REPRESENTING SCALE