

FROM KNOWLEDGE MANAGEMENT SYSTEMS TO EVIDENCE-INFORMED IMPACT

Transforming information into decisions, adaptations, and improvements

1. INFORMATION/KNOWLEDGE GENERATED

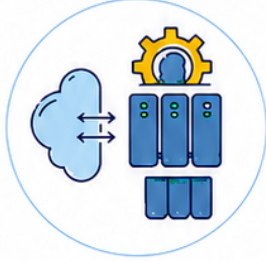
Organizations generate diverse information and knowledge from learning, research, and practice.



- Monitoring data
- Evaluations
- Research
- Lessons Learned report or brief
- Case Study
- Training Material
- And more

2. KNOWLEDGE MANAGEMENT SYSTEMS IN PLACE

Systems and tools support the collection, organization, and sharing of knowledge.



- Repositories and libraries
- Collaboration platforms
- Knowledge portals
- Dashboards and data visualizations
- Learning management systems
- Search and tagging
- Version control and curation
- Access and permissions
- Automation and alerts

3. KNOWLEDGE ACCESSIBLE

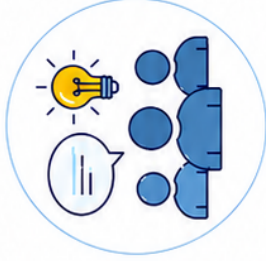
People can easily find and access relevant, quality knowledge.



- Search and discovery
- Structured information
- Metadata and tagging
- Filter and relevance
- User-friendly access
- Mobile and offline access
- Timely and up-to-date
- Open and inclusive access

4. KNOWLEDGE UNDERSTOOD

People interpret, discuss, and derive insights from the knowledge.



- Contextual analysis
- Discussion and reflection
- Sense-making
- Insight generation
- Critical thinking
- Lessons identified
- Evidence synthesis

5. KNOWLEDGE APPLIED

Insights inform decisions and guide actions in real work.



- Decision-making
- Adaptation
- Problem-solving
- Planning and design
- Policy and strategy
- Resource allocation
- Innovation
- Behavior change

6. IMPACT & LEARNING STRENGTHENED

Actions lead to better outcomes and continuous learning.



- Improved results
- Fewer recurring problems
- Stronger outcomes
- Institutional learning
- Accountability
- Adaptive organization
- Continuous improvement

ENABLERS ACROSS THE JOURNEY



Leadership commitment



Incentives for use, not just production



Culture of trust, reflection, and adaptation



Integration of internal and external knowledge



Continuous measurement and feedback



“What decisions, adaptations, and improvements were influenced by the knowledge we produced?”