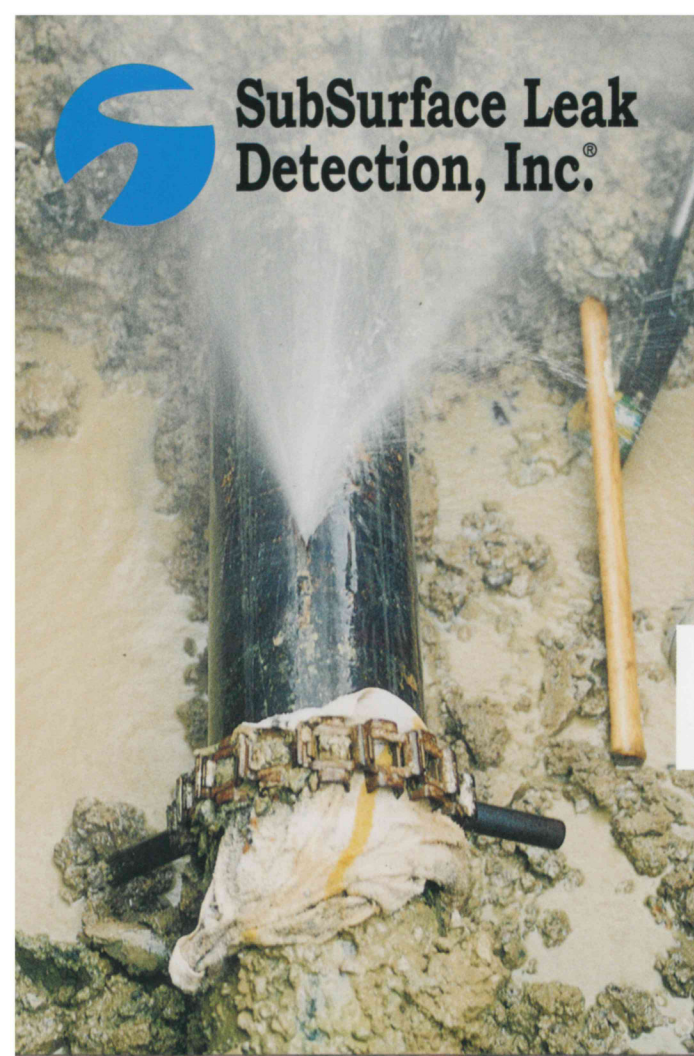




**SubSurface Leak  
Detection, Inc.®**

**MODEL LC-5000  
LEAK NOISE CORRELATOR**





# The LC-5000 Leak Noise Correlator

Compact and Light-Weight. The Main Processor Unit, weighing less than 5 lb., can easily be carried all day

**The Main Processor Unit displays up to 6 Correlations on one screen. User can easily drill into individual correlation from touch screen.**



## Ruggedly Built & Weather-Tight

The Main Processor Unit and the Transmitter Sensors can operate in rain storms, sub-zero temperatures and direct sun for hours.

## Rechargeable Batteries

Runs all day on Lithium Ion Batteries.

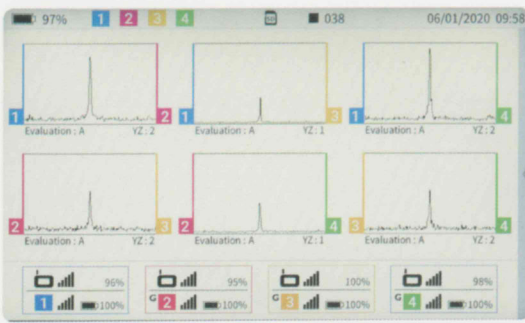
## High Sensitivity Transmitting Sensors Standard

The new LC-5000 Transmitting Sensors are very sensitive, small in diameter, and totally submersible. 4 times the resolution of its predecessor the LC-2500.

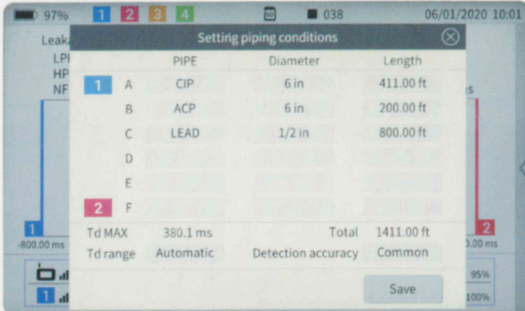
## Easy To Set Up & Run – 3 Steps & You Are On Your Way

Input pipe materials, diameters, and lengths by simply selecting them in the program menus. Automatic functions can do the rest.

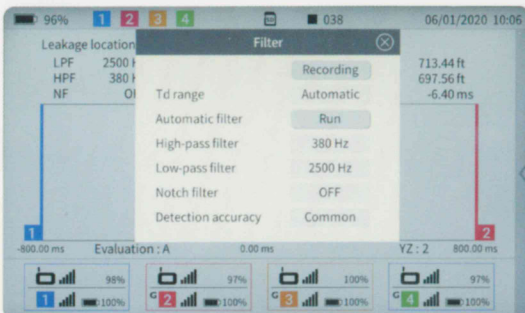
# Easy To Set Up & Run



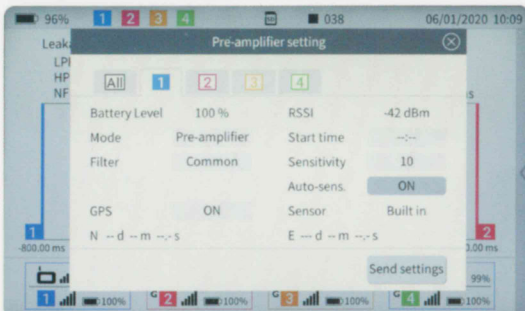
**MAIN CORRELATION SCREEN**, is the “home page” where every correlation begins. Icons at the bottom relay signal & battery strength.



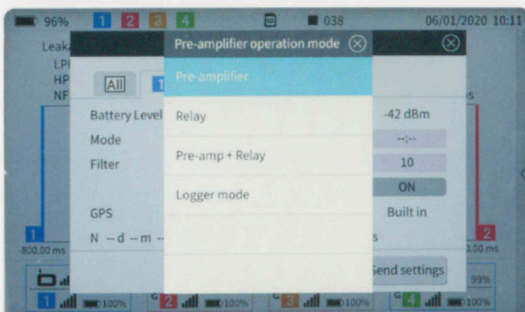
In **PIPE DATA SCREEN**, user enters Material, Diameter & Lengths from the easy touch screen menu.



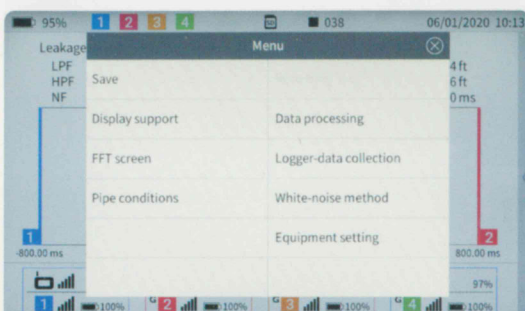
In **FILTER SCREEN**, user can adjust High & Low-Pass Filter ranges & adjust Notch Filter.



In **TRANSMITTER SENSOR SETTINGS**, the user can program & send settings to all units or select individual units for Relay or Relay & Pre-Amp Mode.



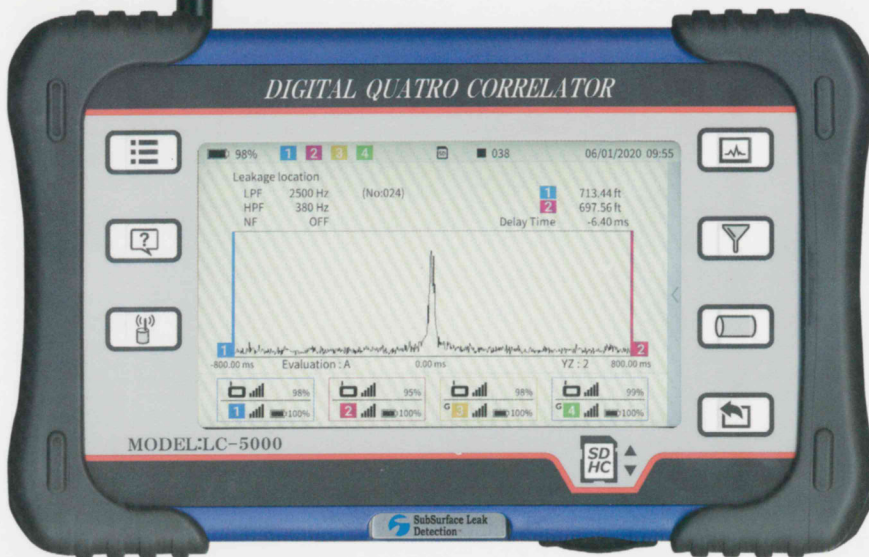
In **PRE-AMPLIFIER / TRANSMITTER MODE**, user has options for programming as Transmitters, Relays, Transmitter / Relays or Logger Mode for overnight or Short Term Deployment.



**MENU SCREEN**, is where user selects various functions like Data processing, Logger data retrieval, Equipment setting as well as FFT & White noise features.



# Powerful Transmitter with Radios That Go Over Hills and Around Buildings



## Pre-amp / Transmitter

“hear” the leak sounds at pipe locations and transmit them to the main processor.



aviation-grade  
stereo  
headphones  
are standard.



High sensitivity  
small diameter

## LC-5000 Transmitter Sensors

standard for all  
pipe materials.



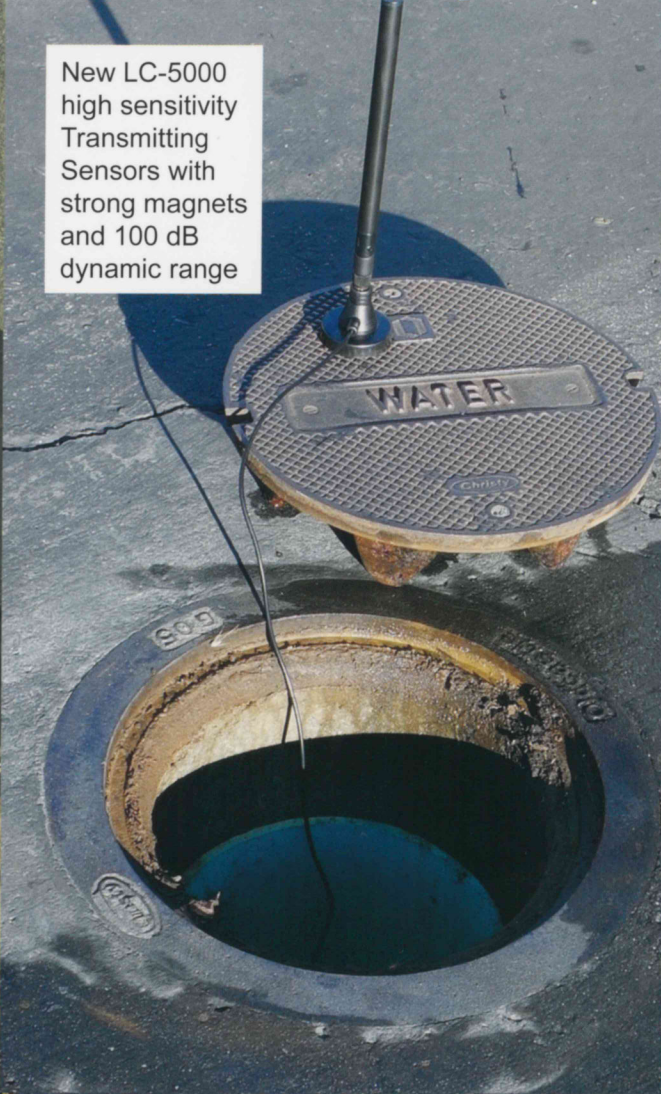
## Patented Submersible Sensors

Deploying all 4 Transmitting Sensors allows for up to 6 correlations on Main Unit main screen.





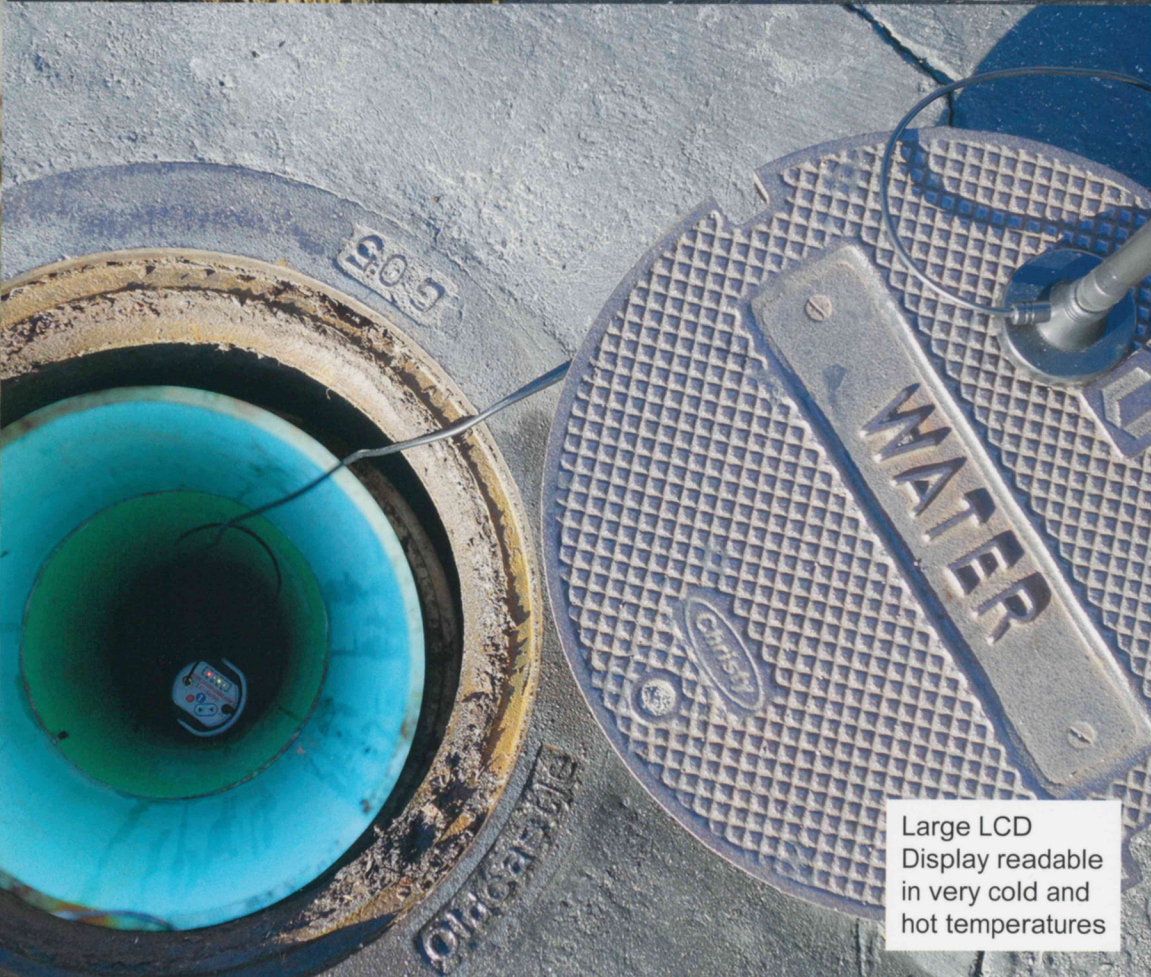
Main Processor Unit with 24 bits digital signal processor (DSP) for much faster correlations



New LC-5000 high sensitivity Transmitting Sensors with strong magnets and 100 dB dynamic range



Powerful transmitter radios with 500 mWatts output to send signals 3000 ft.



Large LCD Display readable in very cold and hot temperatures



# MODEL LC-5000 LEAK NOISE CORRELATOR

1



7



2



4



3



## The LC-5000 System Includes:

- 1 LC-5000 Main Processor Unit
- 2 2 or 4 Transmitting Integrated Sensors
- 3 6-inch Antenna Extensions
- 4 Pedestals for Transmitting Sensors
- 5 Headphones (see inside) & Battery Recharging Cables
- 6 Instruction Manual and SDHC Card
- 7 "Heavy Duty" Composite Carrying Case

## Specifications

### Main Processor Unit

- Operating Temperature Range : -10 to 140°F
- Applicable Standard : IP52 (weather tight)
- External Dimensions : 10.7 inches (W) x 7.0 inches (D) x 3.2 inches (H)
- Weight : Approx. 4.8 lb. (with batteries)
- Battery : Lithium Ion (rechargeable)
- Continuous Operating Time : 8 hours minimum (at 20°C, backlight OFF)
- Minimum Operating Voltage : 4.2V
- Input : Radio x4 or Cable x2
- Display : 7-inch TFT LCD with touch screen
- Operation : Polarity correlation
- Td Range :  $\pm 50\text{ms}$ ,  $\pm 100\text{ms}$ ,  $\pm 200\text{ms}$ ,  $\pm 400\text{ms}$ ,  $\pm 800\text{ms}$ ,  $\pm 1600\text{ms}$ , 3200ms or automatic setting
- Time Resolution : 25  $\mu\text{s}$  (in  $\pm 50\text{ms}$  range), 50  $\mu\text{s}$  (in  $\pm 100\text{ms}$  range), 100  $\mu\text{s}$  (in  $\pm 200\text{ms}$  range), 200  $\mu\text{s}$  (in  $\pm 400\text{ms}$  range), 400  $\mu\text{s}$  (in  $\pm 800\text{ms}$  range), 800  $\mu\text{s}$  (in  $\pm 1600\text{ms}$  range)
- Filter Range : THRU, 80Hz to 5,000Hz (4 low and 4 high)
- Notch Filter : OFF, 50Hz, 60Hz
- Auto Filter : Automatically selected from FFT operation
- Data Memory : 100 correlations
- FFT Monitor : 1kHz, 2.5kHz, 5kHz (common to both channels)
- Sound Memory : For 16 seconds
- External Interface : Antenna, Headphone, Power Switch, Cable, RS-232C

## Optional Accessories:

- 8 External Sensors w/10-foot Cable
- 9 Rechargeable Spare Battery for Main Unit

## Specifications:

### Red and Blue Pre-Amplifiers

- Operating Temperature Range : -13 to 140°F
- Applicable Standard : IP68 (weather tight)
- External Dimensions : 3.14 inches (D) x 7.2 inches (H)
- Weight : Approx. 6.3 lb. (with batteries)
- Battery : Lithium Ion (rechargeable)
- Continuous Operating Time : 10 hours minimum (at 20°C, backlight OFF)
- Minimum Operating Voltage : 6.0V
- Input :
  - Input Frequency Range : 20Hz to 5kHz (at THRU filter setting)  
100Hz to 5KHz (at STD filter setting)
  - Input Sensitivity : 50 micro V, max.
  - Signal to Noise Ratio : 35dB, min.
- Radio Communication System :
  - Output Frequency : UHF under approved freq.
  - Modulation : Direct frequency modulation
  - Output Power : 0.5W (500mW)
  - Output Impedance : 50 $\Omega$

### Sensors

- Operation Modes : Correlation / Relay / Logger / Relay+Correlation
- Sensitivity Settings : 2.0 (1 to 20) Steps Manual & Auto
- Filter Setting Modes : Common / Through
- Recording : Audio signal recording (300 Seconds, logger mode only)
- GPS Function : Transmit position coordinates & elevation to the Main Unit
- Weight : 2.2 lbs

Manufactured by:



**SubSurface Leak  
Detection, Inc.®**

P.O. Box 5490  
Incline Village, NV 89450  
office: (775) 298-2701  
Internet: [www.subsurfaceleak.com](http://www.subsurfaceleak.com)  
E-mail: [subsurfacelocators@gmail.com](mailto:subsurfacelocators@gmail.com)

Distributed by:

**Eastcom**



Eastcom Associates  
185 Industrial Pkwy  
Suite G  
Branchburg, NJ 08876