

**ROTHMAN** | REAL  
ESTATE

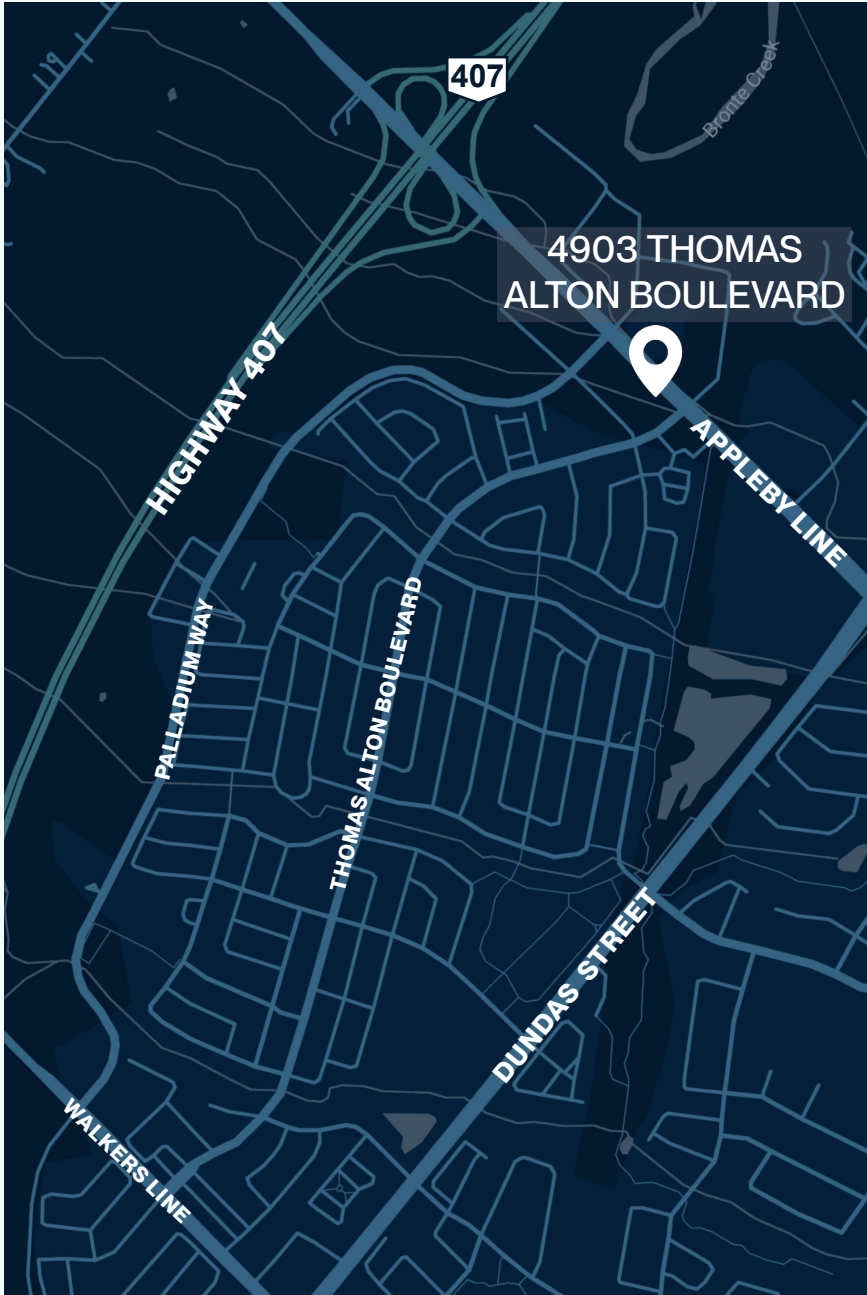
# **4903 THOMAS ALTON BOULEVARD**

**Retail & Office Units For Lease**

BURLINGTON, ONTARIO



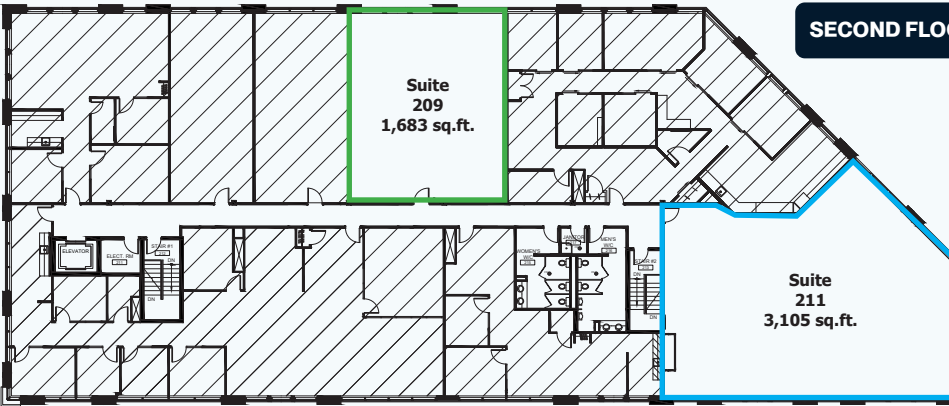
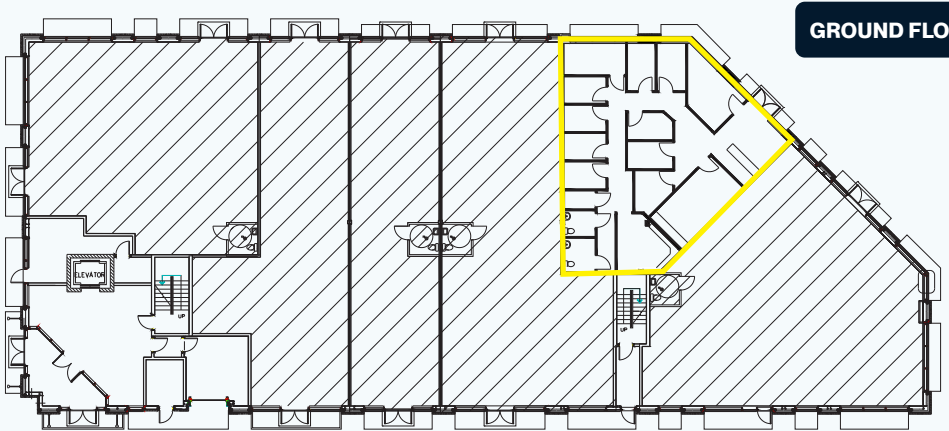
■ LOCATION:



■ AVAILABILITY:

SUITE	SQUARE FOOTAGE	POSSESSION	NOTES
106	2,032 sq. ft.	Immediate	Retail
209	1,683 sq. ft.	Immediate	Office
211	3,105 sq. ft.	Immediate	Office

■ FLOOR PLANS:



## ■ ■ FEATURES:

- Conveniently Located at the Interchange of Appleby Line and Highway 407
- Excellent Sign Visibility from Appleby Line
- Ample Surface Parking Spaces for Staff and Visitors
- Close to many Amenities Including; Restaurants, Banks, Gyms, and Shopping

## ■ ■ CONTACT US:

KATHARINE GIOVANNETTI

E: [leasing@rothmanrei.com](mailto:leasing@rothmanrei.com)

P: 416.630.7589

W: [www.rothmanrei.com](http://www.rothmanrei.com)