

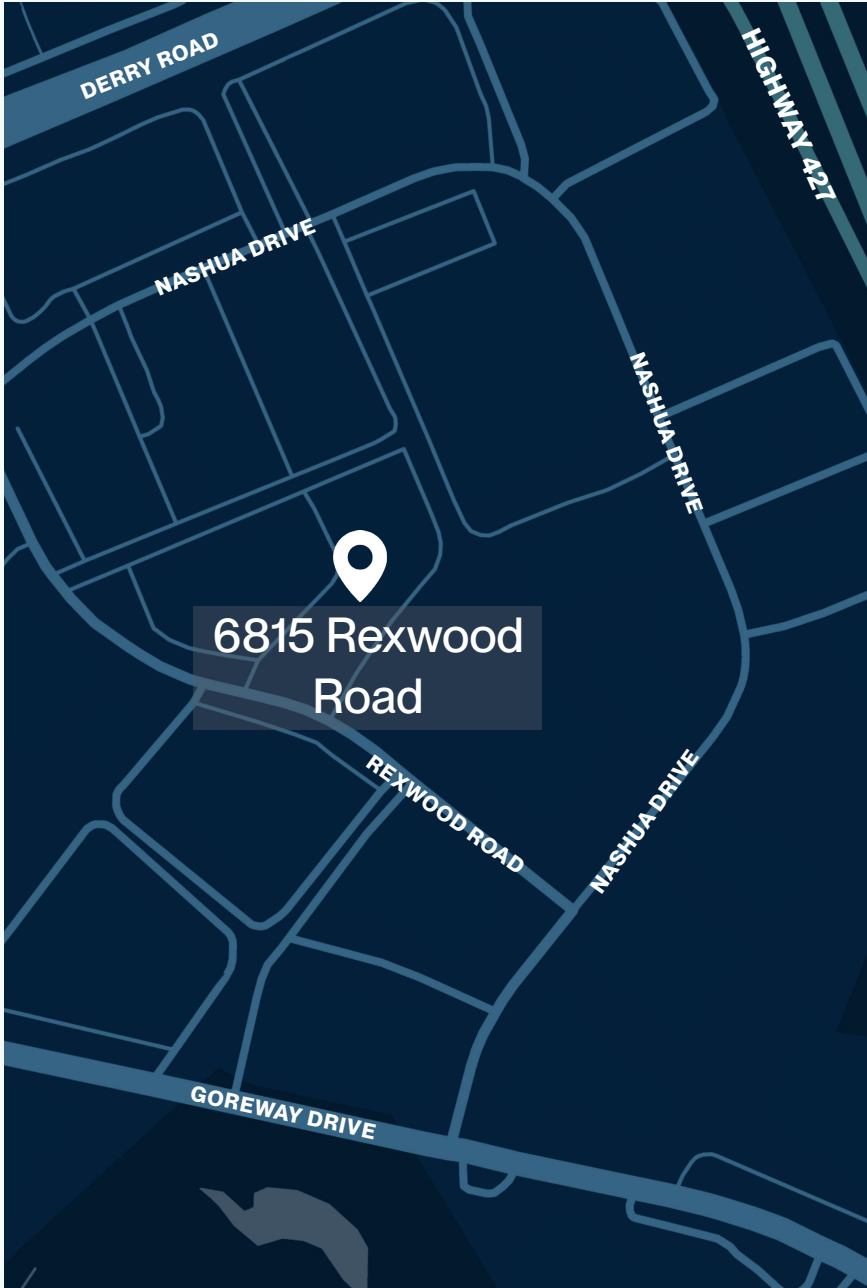


6815 REXWOOD ROAD, UNITS 4-5

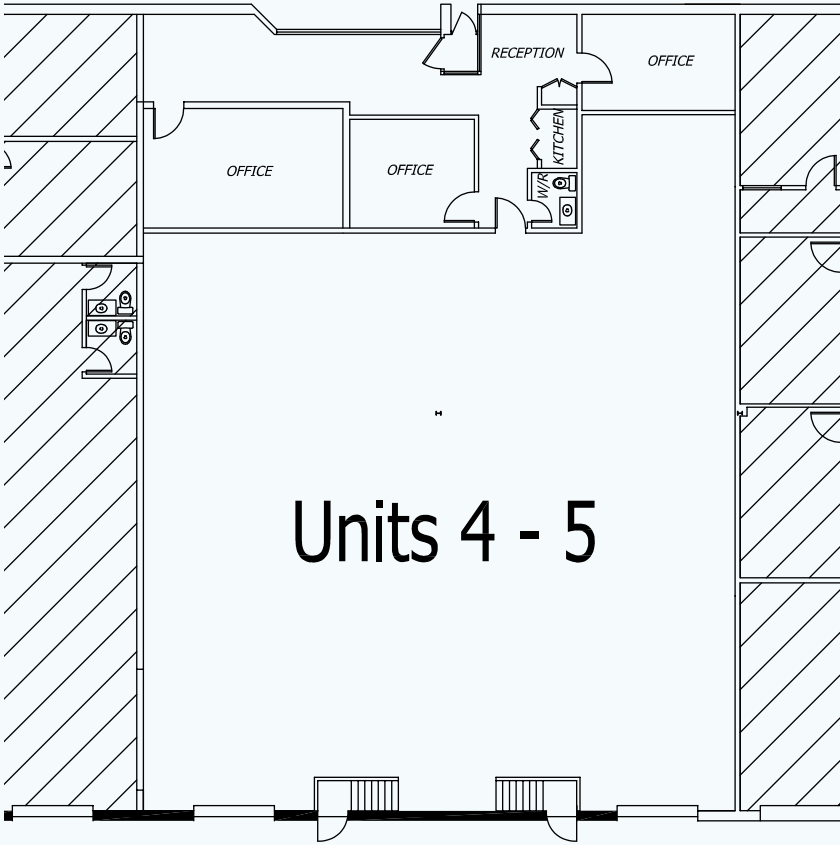
Industrial Units For Lease

MISSISSAUGA, ONTARIO

■ LOCATION:



■ FLOOR PLAN:



■ BUILDING SPECIFICATIONS:

Office:	1,300 sq. ft.	Shipping:	2 Truck Level
Warehouse:	3,720 sq. ft.	Clear Height:	18'
Total:	5,020 sq. ft.	Power:	200 Amps 600 Volts

■ ■ FEATURES:

- Prime Unit in Well-Established Mississauga Industrial Node
- Immediate Access to Highway 427
- Excellent Access to Highways 407, 409, and Toronto Pearson International Airport
- Public Transit at Door Step
- Excellent Shipping
- Ample Surface Parking on Site for Staff and Visitors

■ ■ CONTACT US:

KATHARINE GIOVANNETTI

E: leasing@rothmanrei.com

P: 416.630.7589

W: www.rothmanrei.com