

# Powerful + Connected

Orange's EVSE, our most powerful charger, is built and tested to meet automotive standards and ensure reliable charging. Designed with a NEMA 4 outdoor rated enclosure, Orange Charger can handle everyday wear-and-tear and deliver successful charging sessions in indoor and outdoor parking environments.

OrangeNet is built into all Orange Chargers, providing unmatched connectivity between chargers without recurring fees. A bluetooth connection is all that is needed for a driver to successfully charge with Orange. No network upgrades are required.

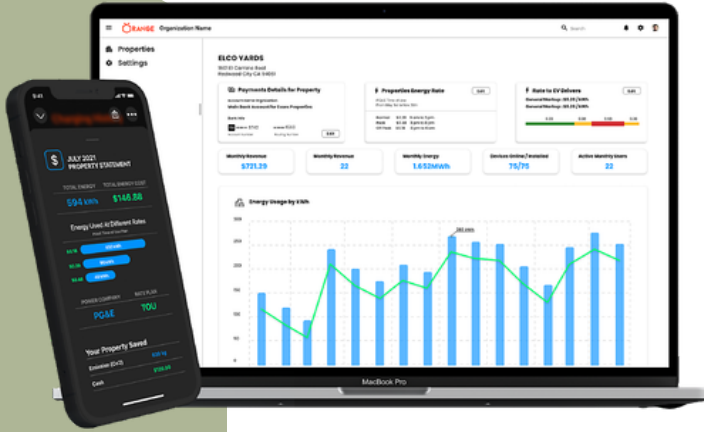
Our OrangeOS software automates billing, tracks energy usage, controls access, and reports utilization data for a seamless management experience with no additional software fees.

Compatible with all plug-in vehicles.



Learn more at [OrangeCharger.com](https://www.OrangeCharger.com)





Dashboard access visualize EV charging data.

## Powerful Software

**Power management:** dynamic load balancing based on charger grouping, vehicle priority, and more. Can be installed with the ability to power manage each port down to 1.6 kW.

**Revenue collection:** set end-user fees, accepts all major credit cards, apple pay, and google pay.

**Reporting:** custom report generation, plus CSV data downloadable any time.

**User management:** group & set permissions for residents, employees, and fleets.

Charger firmware management & continual software updates.

Compatible Mounting Solutions:

- > HCS Pedestal
- > ProMountDuo Universal Pedestal
- > Ruggedized ProMountDuo Pedestal

### Note: Wire gauge for reference only.

Electrician is responsible for correct gauge and local code compliance.

## Product Specifications

Part	920140	920160
Connector type		Hardwired
Voltage (Voltage AC)	208/240 VAC (L-L), single-phase/185 VAC — 264 VAC	
Frequency (Hz)	50 to 60Hz	
Circuit Breaker (A)	40	60
Continuous Current (A)	32	48
Over Voltage (Voltage AC)	5000 RMS Symmetrical Amps at 240 VAC	
Ground Fault Detection	Ground fault protection integral, CCID 20 mA, auto reset	
Dimensions	500 x 226 x 135 mm (19.7 x 8.9 x 5.3 in) (LxWxH)	
Codes and Standards	NEC Article 625, SAE J1772, UL, NOM	
Temperature Range	-22°F to 122°F (-30°C to 50°C)/-40°F to 176°F (-40°C to 80°C)	
Environment/Enclosure rating	Indoor/Outdoor rated/NEMA4-watertight	
Plastic	Injection Molded	
Max Wattage (kW)	9.6	14.4
Operating Wattage (kW)	7.68	11.52
Input Wire Gauge (AWG / mm <sup>2</sup> )	8	6
Connectivity	OrangeNet (Cellular, WiFi, BLE)	
Agency Approvals	UL 2594, UL 2251, UL 2231-1, UL 2231-2, UL 1998, UL 991 C22.2 No. 280-13, CSA C22.2 No. 282, CSA C22.2 No. 281.1, CSA C22.2 No. 281.2, CSA C22.2 No. 0.8 NOM-001-SCFI-2018	
Warranty	3 Year Manufacturing	