



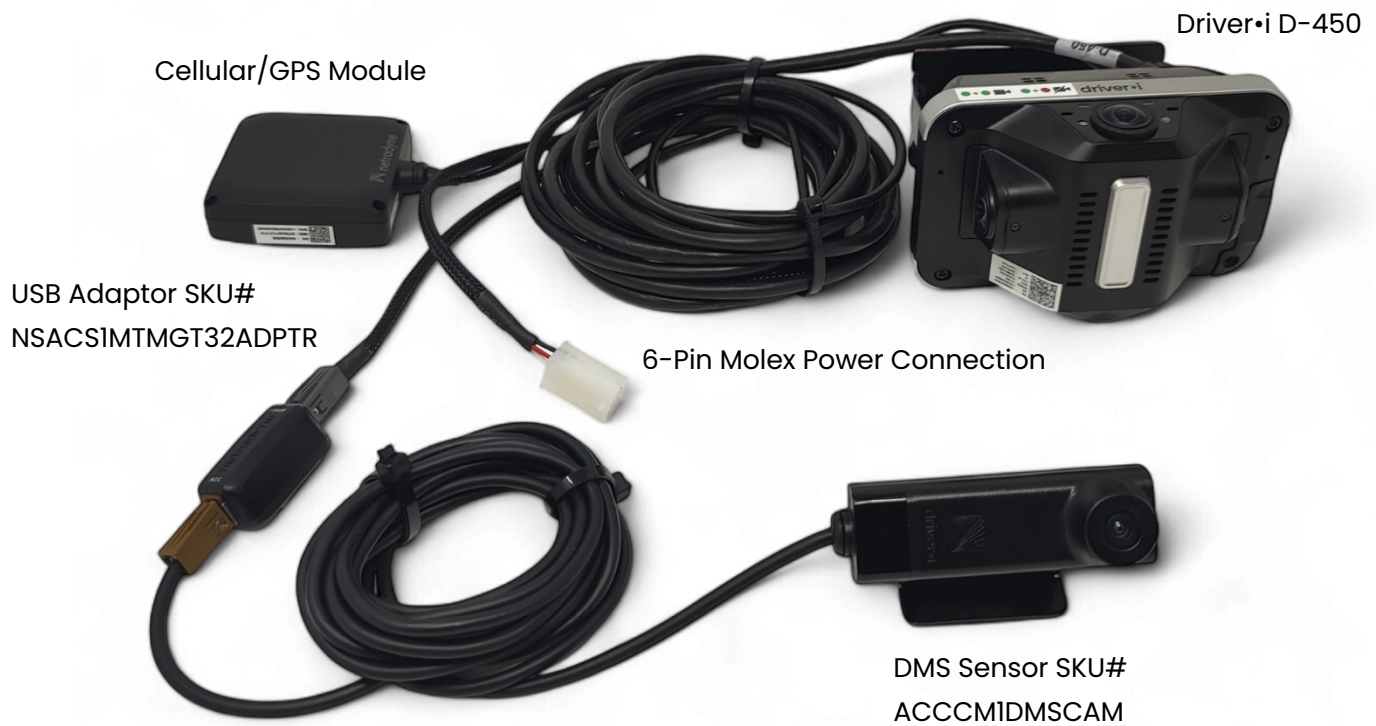
DMS Sensor Installation SOP

March 2025 Version 2.7

Table of Contents

Table of Contents.....	1
DMS Connectivity Outline.....	2
Equipment Required.....	3
Step 1: Install the D-450.....	3
Step 2: Place the DMS on the Vehicle Dash.....	4
Step 3: Pair the DMS using the Driver•i Installer App.....	4
Step 4: Calibrating the DMS	5-6
Step 5: Apply VHB to Mount Location.....	7
Step 6: Verify DMS Installation.....	7
DMS LED Status.....	8
How to Unpair DMS Sensor.....	8

DMS Connectivity Outline



Equipment Required

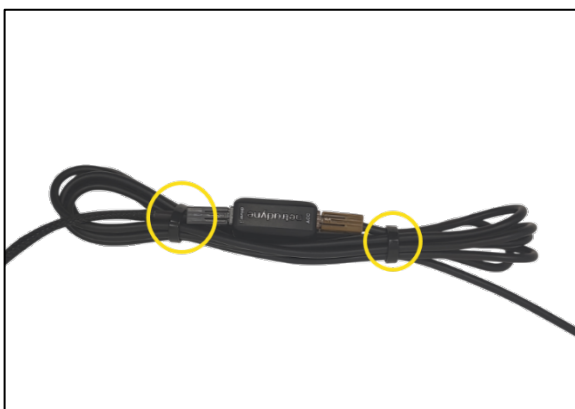
The following equipment is required to complete the installation:

- Netradyne Driver•i D-450
 - OTA 5.6.4.rc.1 or higher
- Driver Monitoring System (DMS) Sensor
- USB Adaptor (One of the following)
 - Male-to-male pass-through
 - Both use GT32 connectors
- Mobile Phone Android or IOS with Driver•i Installer App
 - v6.6 or higher
- Masking Tape or Double-sided tape
- Zip Ties
- T-10 Security Torx Driver or Bit
- >90% Rubbing or Denatured Alcohol
- Small plastic clip



Step 1: Install the D-450

- Assume that a D-450 is already installed.
- During the power cable routing process, attach the male -to-male adaptor or between the D-450 and DMS USB connection.
- Utilize 2 Zip Ties to tie off the excess cable at both ends as shown below.



Step 2: Place the DMS on the Vehicle Dash

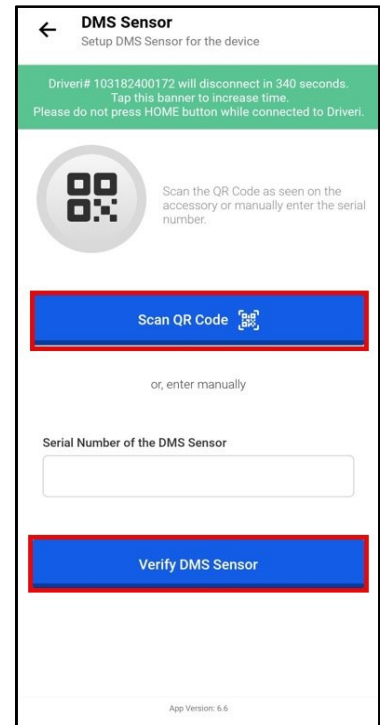
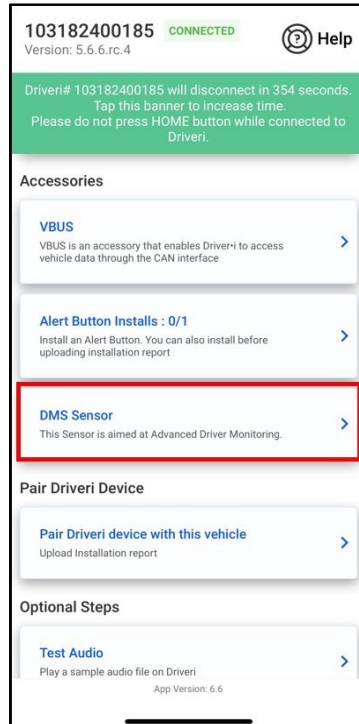
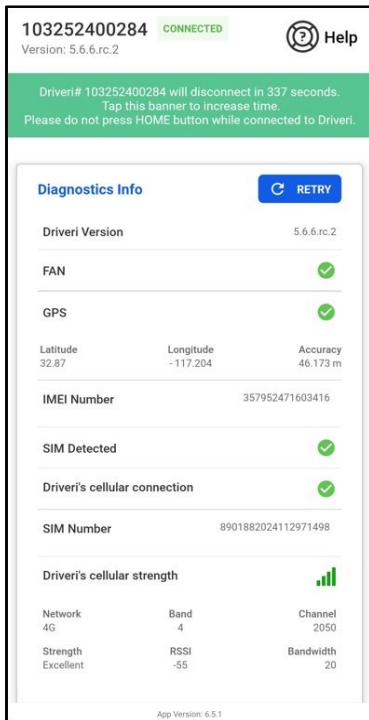
- **Please be advised** that a significant number of vehicle models are equipped with adjustable seats and steering wheels, offering multiple configurations to accommodate driver comfort and visibility.
 - **This variability in seating and steering wheel positioning should be carefully considered when placing the Driver Monitoring System (DMS) sensor on the vehicle dashboard as this could potentially block the sensor and affect the ability of the sensor to function properly.**
- Without removing the tape backing on the VHB, place the DMS sensor flat against the vehicle dash, angled at the driver without any field of view (FOV) obstructions.
 - Please be mindful of the infrared LED.
- Mount must be flat against the dash.
- Place the small clip on the dash to route DMS Sensor cable.
- Loosen the screws on the DMS mount so that it can be adjusted.



We offer a 3-inch mount to accommodate vehicles where steering wheel, seat adjustments and lower dashboards may create clearance issues for calibration.

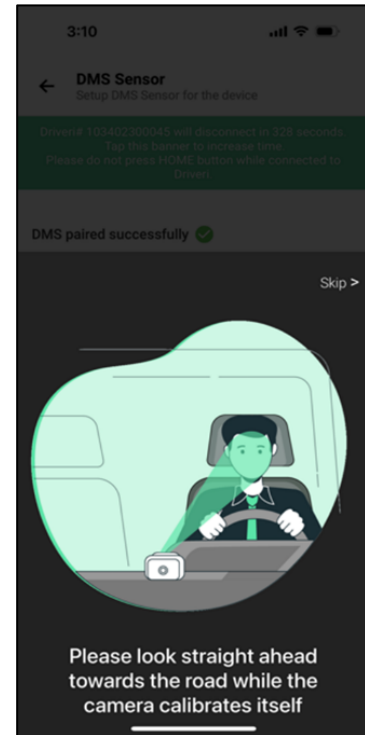
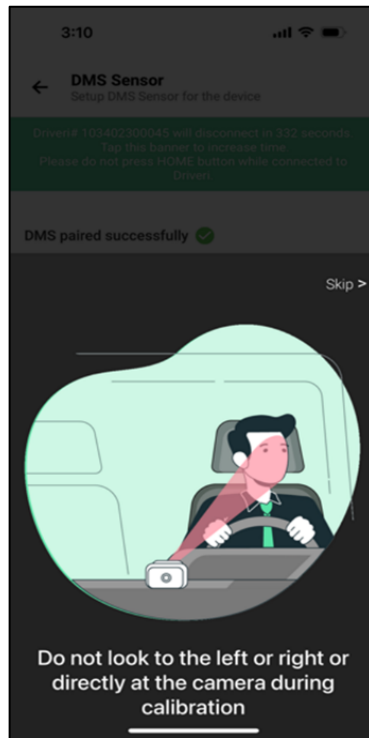
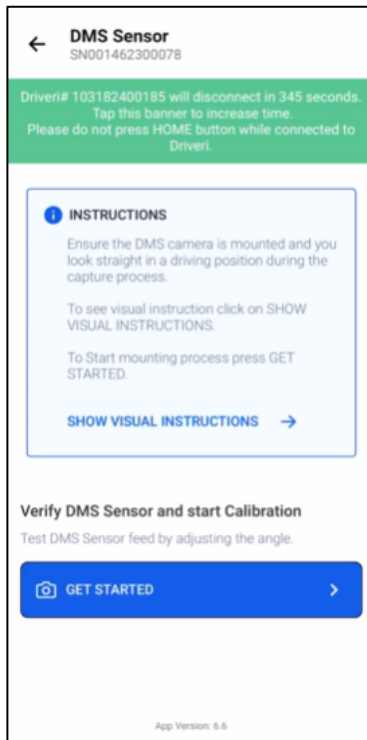
Step 3: Pair the DMS using the Driver•i Installer App

- Connect to the D-450 using the Driver•i Installer App.
- Pair the DMS through the Accessories tab.
- Scan the Serial Number of the DMS.

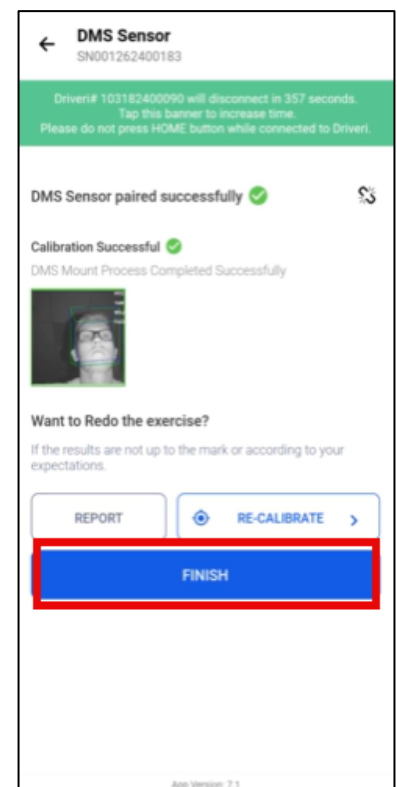
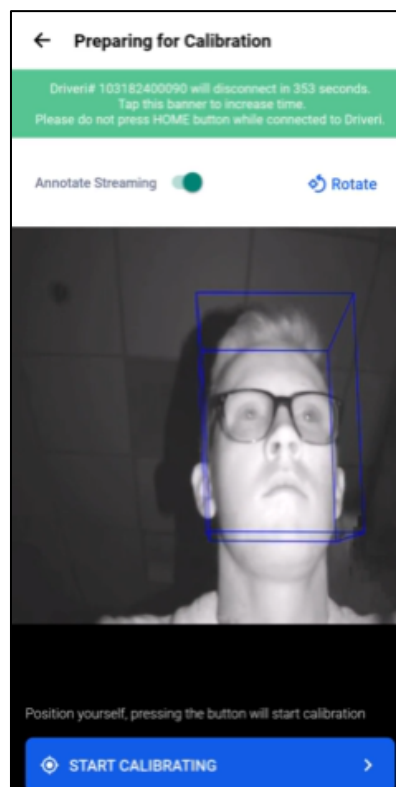


Step 4: Calibrating the DMS

- While still connected to the D-450 over the Installer App, choose the "calibrate sensor" option of the DMS.
- Adjust the position of the DMS until all four dots representing pitch, yaw, roll, Face, are green, Refer to figure 4.
- The installer needs to be in the Driver's seat looking straight ahead at the road.
- When ready, press "calibrate" and wait for the calibration to happen.
- With installer APP still connected, proceed to Step 5.



During calibration maintain normal driving posture.



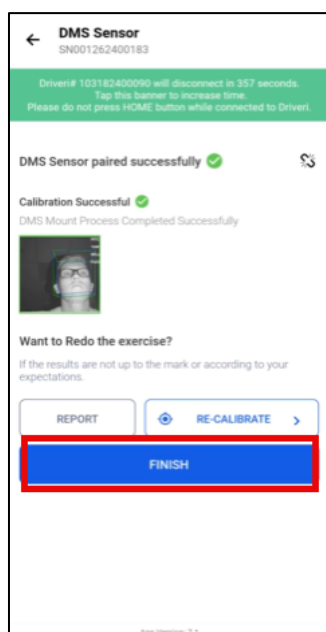
Step 5: Apply VHB to Mount Location

- Once calibrated, tighten the screws of the DMS and mark the edges of the mount on the dash with a boundary made with the masking or double-sided tape.
- Remove the paper covering the VHB and place on the mount back onto the marked area.



Step 6: Verify DMS Installation

- Recalibrate the DMS system one more time, to ensure that the DMS system did not move during the placement process.
 - If the installer app connection was lost before reaching this step, it may be necessary to unpair the DMS in order to reach the calibration step again.

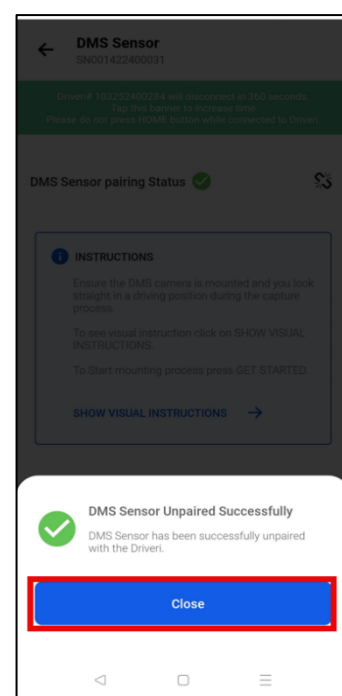
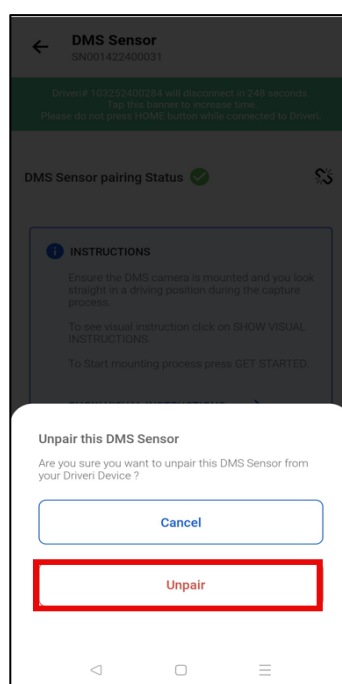
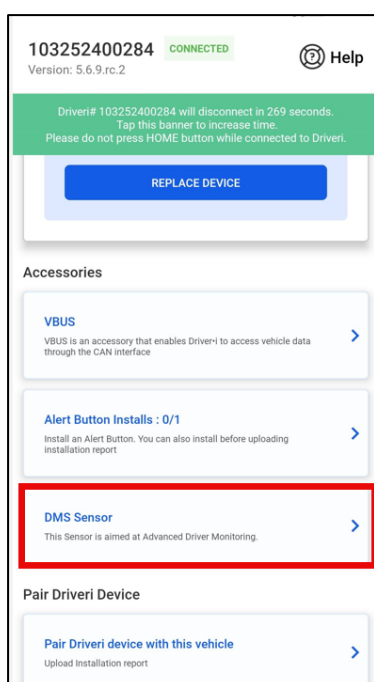


DMS Sensor LED Status

Scenarios	LED Behaviour
DMS Not connected to Driver <i>i</i> or DMS Connected in (LPM) Low Power Mode	No LED*
DMS Needs to Be Paired and Calibrated	YELLOW
DMS Connected but Not Recording (same as Driver <i>i</i> Inward camera)/ Privacy Mode Activated	RED
DMS Connected and Recording	GREEN

**DMS will power ON, only upon connecting to Driver*i*.*

How to Unpair DMS Sensor



FCC PART 15 STATEMENT

This device complies with Part 15 of the FCC Rules. Operating is subject to the following two conditions:

- (1) this device may not cause harmful interference, and
- (2) this device must accept any interference received, including interference that may cause undesired operation.

This equipment has been verified to comply with the limits for a class B computing device, pursuant to FCC Rules. In order to maintain compliance with FCC regulations, shielded cables must be used with this equipment. Operation with non-approved equipment or unshielded cables is likely to result in interference to radio and TV reception. The user is cautioned that changes and modification made to the equipment without the approval of manufacturer could void the user's authority to operate this equipment.

This equipment had been tested and found to comply with the limits for a Class B digital device, pursuant to part 15 of the FCC Rules. See 47 CFR Sec. 15.105(b). These limits are designed to provide reasonable protection against harmful interference in a residential installation. This equipment generates, uses and can radiate radio frequency energy and, if not installed and used in accordance with the instructions, may cause harmful interference to radio communications.

However, there is no guarantee that interference will not occur in a particular installation. If this equipment does cause harmful interference to radio or television reception, which can be determined by turning the equipment off and on, the user is encouraged to try to correct the interference by one or more of the following measures:

Reorient or relocate the receiving antenna.

Increase the separation between the equipment and the receiver.

Connect the equipment to an outlet on a circuit different from that to which the receiver is connected.

Consult the dealer or an experienced radio/TV technician for help.

FCC ID:2AM8R-DMS-10

FCC CAUTION STATEMENT FOR MODIFICATIONS

CAUTION: Any changes or modifications not expressly approved by Netradyné could void the user's authority to operate the equipment.