



MANUSTM

PRODUCT PORTFOLIO 2026

Where Human Motion
Becomes Machine Skill.



MANUS™ METAGLOVES PRO

MILLIMETER-LEVEL PRECISION & FULL HAND CAPTURE

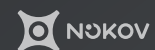
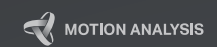
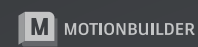
The Metagloves Pro deliver millimeter-level accuracy with no occlusion, no drift, and seamless calibration. Capturing 25 degrees of freedom (DOF), these gloves provide a complete, true-to-life digital representation of the human hand, tracking every joint and micro-movement with precision. This extensive capture capability generates the high-quality, detailed datasets essential for robotics training, embodied AI research, and motion science applications.

INSTANT SETUP & SEAMLESS INTEGRATION

Setup takes seconds. Persistent calibration profiles eliminate the need to recalibrate between takes, users, or battery swaps, allowing for smooth integration into existing tools, software, and production pipelines. Every gesture is captured exactly as it happens, providing reliable, consistent input that accelerates development cycles and research workflows.

ENGINEERED FOR CONTINUOUS PROFESSIONAL USE

Engineered for 24/7 operation with durable materials and long-lasting comfort. Features include hot-swappable interchangeable batteries, a detachable Top Module for multi-user shifts, and optional external USB-C power, ensuring uninterrupted performance in demanding professional environments.



HARDWARE SPECS

| | |
|------------------------|------------------------------------|
| Signal latency | 30ms (wired), 50ms (wireless) |
| Finger sensor type | Absolute position, 3 axis rotation |
| Sensor sample rate | 120Hz |
| Battery duration | up to 3 hours (swappable) |
| Charging time | 2 hours USB-C |
| Weight | 167 grams (incl. battery) |
| Wired communication | USB-C |
| Wireless communication | Bluetooth Low Energy 5 |
| Wireless range | Up to 15 meters |
| Textile information | Multiple Sizes Available |

WHAT'S IN THE BOX?

- 1x Pair of Metaglove Pro Sensor Gloves
- 1x Pair of Metaglove Pro Top Modules
- 1x Wireless Dongle
- 4x Metagloves Pro Battery
- 2x USB-C Cables
- 1x Quick Start Guide
- 1x Travel Case



A hand wearing a grey haptic glove with a white wrist module. The glove has black circular sensors on the fingers and palm. The wrist module is white and rectangular, with a central slot and two side buttons. The hand is positioned against a dark background on the left and a light background on the right.

MANUS™ METAGLOVES PRO HAPTIC

Precision Hand Tracking with Haptic Feedback

MANUS Metagloves Pro Haptic integrate electromagnetic field (EMF) tracking with haptic feedback to deliver millimeter-level hand motion capture and real-time object interaction signals. With 25 degrees of freedom, the system generates anatomically complete datasets of the human hand, capturing every joint and micro-movement for high-fidelity robotic control, embodied AI training, and VR/XR interaction.

CORE TECHNOLOGY

EMF tracking provides millimeter-level accuracy with no occlusion, no drift, and persistent calibration. Integrated Linear Resonant Actuators provide real-time vibrotactile feedback during object interaction, enhancing spatial awareness and accelerating learning in teleoperation and virtual environments. Calibration completes in seconds, with user-specific profiles stored locally on the computer that persist across battery changes and wear sessions.

MODULAR DESIGN

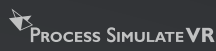
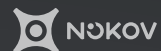
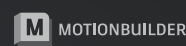
The detachable Haptic Top Module contains all electronics and connectivity, enabling cost-efficient multi-user deployment. Each operator requires only their own sized Haptic Sensor Glove. Swappable batteries and optional USB-C power support continuous 24/7 operation. The system integrates directly into existing pipelines through real-time streaming, industry-standard file export, or full SDK customization.


APPLICATIONS

Designed for teleoperation systems requiring tactile feedback, embodied AI training workflows demanding rich interaction datasets, and XR/VR environments where haptic response improves task performance and immersion. Suitable for robotics research, motion science, and AI development requiring anatomically accurate human hand data.



LIVE DATA STREAM INTEGRATIONS



 Supports haptic feedback

HARDWARE OVERVIEW

| | |
|------------------------|-----------------------------------|
| Signal latency | 30ms (wired), 50ms (wireless) |
| Finger sensor type | 5 EMF sensors with 6 DOF tracking |
| Sensor sample rate | 120Hz |
| Haptic module type | LRA vibration motor |
| Battery duration | up to 3 hours (swappable) |
| Charging time | 2 hours USB-C |
| Weight | 178 grams (incl. battery) |
| Wired communication | USB-C |
| Wireless communication | Bluetooth Low Energy 5 |
| Wireless range | Up to 15 meters |
| Textile information | Size M, L |

WHAT'S IN THE BOX?

| | |
|----|--|
| 1x | Pair of Metaglove Pro Haptic Sensor Gloves |
| 1x | Pair of Metaglove Pro Haptic Top Modules |
| 1x | Wireless Dongle |
| 4x | Metagloves Pro Haptic Battery |
| 2x | USB-C Cables |
| 1x | Quick Start Guide |
| 1x | Travel Case |

MANUS™



MANUS™ QUANTUM METAGLOVES

ACCURATE HAND TRACKING FOR PROFESSIONAL WORKFLOWS

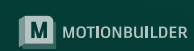
The Quantum Metagloves deliver reliable, drift-free finger and hand tracking with no occlusion and no complex setup. These gloves capture the full range of hand motion with consistent accuracy across sessions, providing clean, dependable data for robotics development, research applications, and motion capture work.

READY IN MINUTES, BUILT FOR REAL WORK

Quick calibration gets you up and running fast, and the gloves maintain stable tracking across extended sessions without drift or recalibration interruptions. Compatible with leading software pipelines and development tools, they integrate smoothly into existing workflows without friction.

DEPENDABLE PERFORMANCE, SESSION AFTER SESSION

Featuring hot-swappable batteries and a robust build designed for regular professional use, the Quantum Metagloves keep pace with demanding schedules. Whether you're running back-to-back capture sessions or long research experiments, the hardware holds up, backed by a 2-year warranty and MANUS' dedicated technical support.



HARDWARE SPECS

| | |
|------------------------|------------------------------------|
| Signal latency | 80ms (wired), 100ms (wireless) |
| Finger sensor type | Absolute position, 3 axis rotation |
| Sensor sample rate | 120Hz |
| Battery duration | up to 3 hours (swappable) |
| Charging time | 2 hours USB-C |
| Weight | 146 grams (incl. battery) |
| Wired communication | USB-C |
| Wireless communication | Bluetooth Low Energy 5 |
| Wireless range | Up to 15 meters |
| Textile information | M/L (washable) |
| Finger attachments | Liner Gloves |

WHAT'S IN THE BOX?

- 1x Pair of Quantum Metagloves
- 1x Wireless Dongle
- 4x Quantum Battery
- 2x USB-C Cables
- 3x Pair of Liner Gloves (S/M/L)
- 1x Quick Start Guide
- 1x Travel Case





EMBODIED AI TRAINING

Collecting real-world manipulation data for Neura 4NE1 with MANUS Metagloves Pro



HAPTIC FEEDBACK IN ACTION

Feeling real-time vibrotactile feedback with Metagloves Pro Haptic

MANUS BODYPACK LITE

UNLIMITED RANGE

Extendible range through WiFi streaming live to any MANUS integration or plug-in or record and export through MANUS Core.

ZERO DATA LOSS

Robust data quality by eliminating packet loss or dropped frames.

INTEGRATED DONGLE

Connect your MANUS Metagloves wirelessly without additional hardware for a seamless experience.

TRIGGERED RECORDING

Recording starts and stops in sync with Vicon, OptiTrack, Qualisys, Xsens, PeelCapture and/or Rokoko.

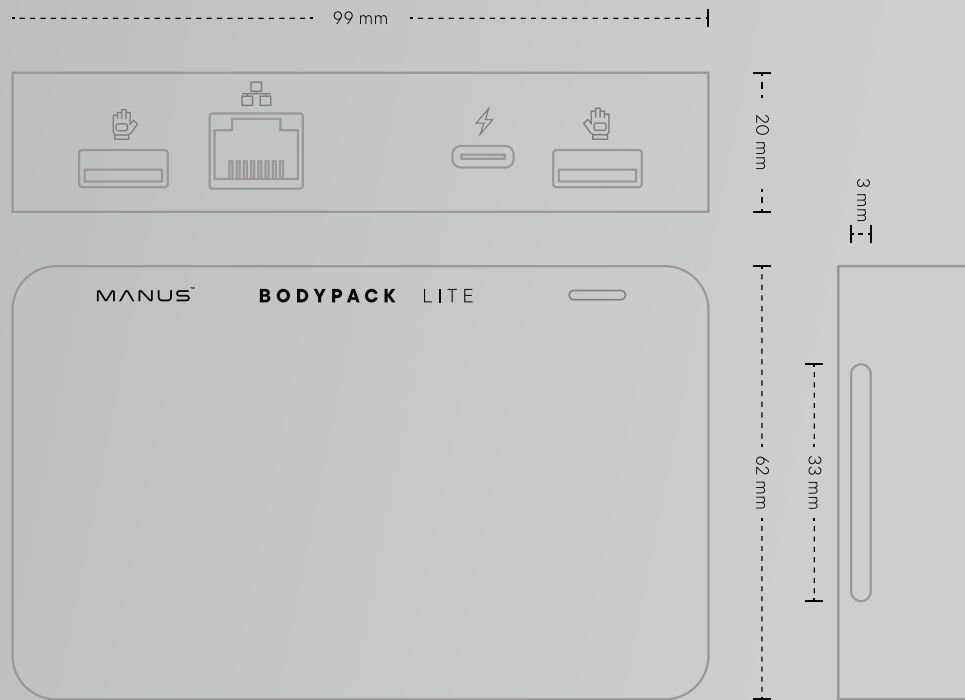
STICK & GO

Can be applied to any motion capture suit with ease with the velco backed casing.

SMALL & LITE

Never experience occlusion and feel the props you are using with your fingertips.





HARDWARE SPECS

| | |
|----------------------|--|
| Wireless | Wi-Fi 6E (2,4GHz, 5GHz, 6GHz) |
| Ethernet | 1 Gbps |
| Wireless Gloves | Metagloves Series, Prime 3 Series (requires Prime 3 Wireless Dongle) |
| Wired Gloves | Metagloves Series, Prime 3 Series |
| Timecode & Sync | Supported, through external device |
| Power | USB Type-C |
| Power Input | 5V/2.4A |
| Power Consumption | ~2.5W |
| Battery Life | ~7 hours (on 19Wh Power Bank) |
| Ports | 2x USB 2.0 Type-A (for MANUS gloves, MANUS Wireless Dongle) |
| Management | Wireless over Wi-Fi, Wired over Ethernet, Wired over USB-C |
| Weight | 95 grams (~3½ ounces) |
| Body Attachment Type | Velcro backed casing, Strap attachment points |

ACCESSORIES

Charging Station

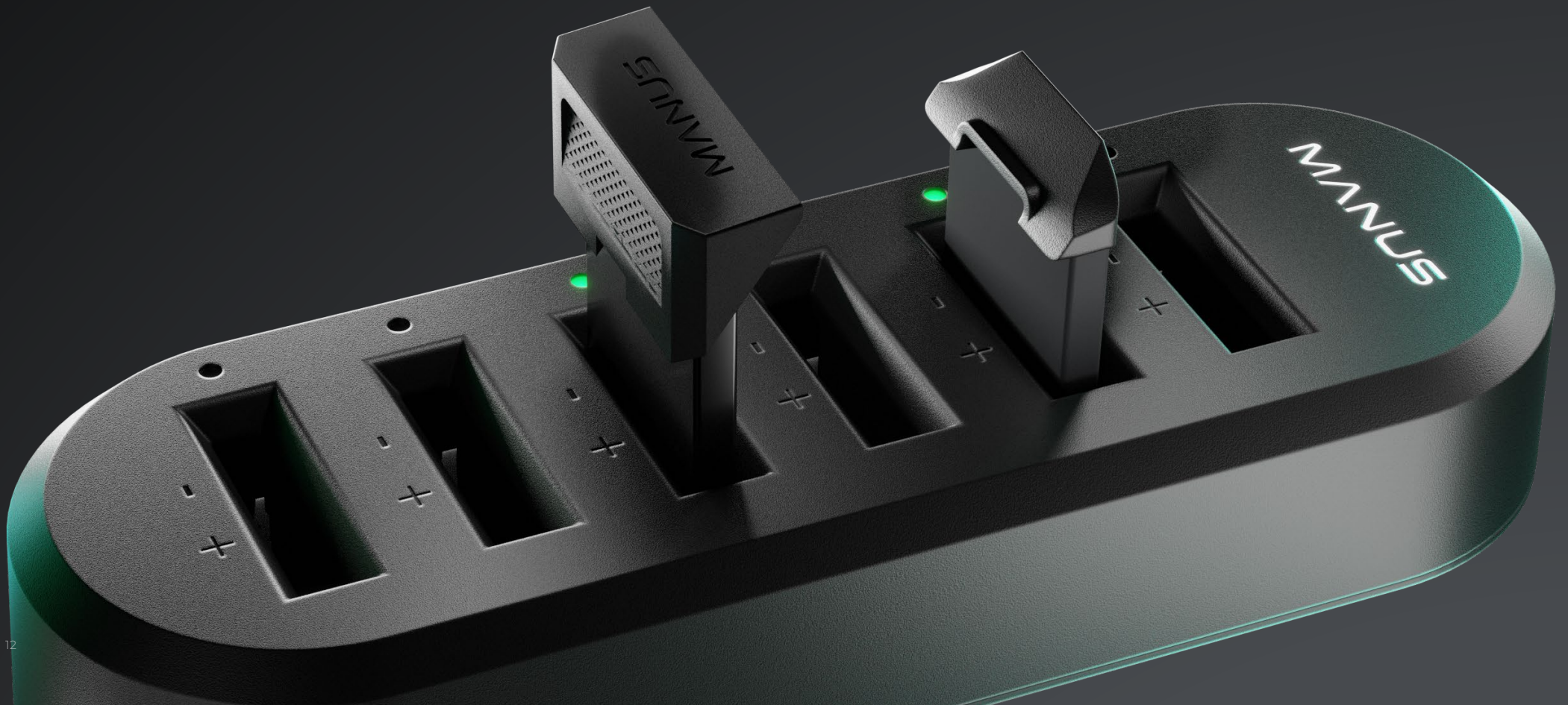
UNINTERRUPTED WORKFLOW

Hot-swappable batteries deliver 3+ hours of continuous use per charge. Keep spare batteries ready in the charging station to maintain uninterrupted workflow throughout your entire session.

Charger Pack

CHARGING STATION +2 BATTERIES

Available for Metagloves Pro, Metagloves Pro Haptic & Quantum Metagloves





Sensor Glove

For Metagloves Pro, sizes XS, S, M, L and XL

For Metagloves Pro Haptic, size M



XSENS Adapters

2 SETS OF 2

Two Xsens Link (pre 2025) adapters, two Link (next-gen) adapters, and two Xsens Awinda adapters



Set of Batteries

Available for Metagloves Pro & Metagloves Pro Haptic



Vive Tracker Adapters

SET OF 2



Optical Tracking Adapters

SET OF 2

Four optical markers, four marker screws & one rigid mounting plate.



Quest 3 Adapters

SET OF 2

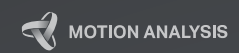
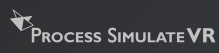
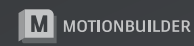



SOFTWARE

MANUS CORE 3

A central platform for configuring gloves and tracking systems, calibrating users, and streaming motion data into 3D engines and third-party tools through plugins and software development kits (SDKs).

LIVE DATA STREAM INTEGRATIONS



 Supports haptic feedback

LICENSES

| | MANUS CORE | MANUS CORE + SDK | MANUS CORE + XR | MANUS CORE + XSENS | MANUS CORE + OPTICAL |
|---|------------|---------------------|--------------------|-----------------------|-------------------------|
| FEATURES | | | | | |
| Start Dashboard | ✓ | ✓ | ✓ | ✓ | ✓ |
| Connect / Update Firmware / Apply License | ✓ | ✓ | ✓ | ✓ | ✓ |
| Calibrate / View Dashboard | ✓ | ✓ | ✓ | ✓ | ✓ |
| Stream to Unreal Engine (Plugin) | ✓ | ✓ | ✓ | ✓ | ✓ |
| Stream to Unity (Plugin) | ✓ | ✓ | ✓ | ✓ | ✓ |
| Recording, Saving & Playback (.mrec) | ✓ | ✓ | ✓ | ✓ | ✓ |
| Exporting (.fbx, .csv) | ✓ | ✓ | ✓ | ✓ | ✓ |
| Stream to Motion Builder (Plugin) | ✓ | ✓ | ✓ | ✓ | ✓ |
| Vicon Post Script | ✓ | ✓ | ✓ | ✓ | ✓ |
| DEVELOPER | | | | | |
| SDK Access (C++) | ✗ | ✓ | ✗ | ✗ | ✗ |
| SDK Core Integrated (Linux Compatible) | ✗ | ✓ | ✗ | ✗ | ✗ |
| ROS2 Package | ✗ | ✓ | ✗ | ✗ | ✗ |
| Raw Sensor Data Stream | ✗ | ✓ | ✗ | ✗ | ✗ |
| XR PARTNER INTEGRATION | | | | | |
| IC.IDO Integrations | ✗ | ✗ | ✓ | ✗ | ✗ |
| Siemens TeamCenter Integration | ✗ | ✗ | ✓ | ✗ | ✗ |
| OpenXR | ✗ | ✗ | ✓ | ✗ | ✗ |
| OPTICAL PARTNER INTEGRATIONS | | | | | |
| Xsens MVN | ✗ | ✗ | ✗ | ✓ | ✗ |
| OptiTrack Motive | ✗ | ✗ | ✗ | ✗ | ✓ |
| Qualisys QTM | ✗ | ✗ | ✗ | ✗ | ✓ |
| Nokov XingYing | ✗ | ✗ | ✗ | ✗ | ✓ |
| FZMotion | ✗ | ✗ | ✗ | ✗ | ✓ |

METAGLOVES PRO

METAGLOVES PRO HAPTIC

QUANTUM METAGLOVES

Fingertip Sensors

| | | | |
|-----------------------------------|---|---|---|
| Technology | 5 EMF sensors with 6 DOF tracking | 5 EMF sensors with 6 DOF tracking | 5 EMF sensors with 6 DOF tracking |
| Data | 3 axis positional and 3 axis rotational | 3 axis positional and 3 axis rotational | 3 axis positional and 3 axis rotational |
| Sampling rate | 120Hz | 120Hz | 120Hz |
| Motion-to-data latency (wired) | 30ms | 30ms | 80ms |
| Motion-to-data latency (wireless) | 50ms | 50ms | 100ms |

Fingertip Haptics

| | | | |
|-----------------------------|---|--------------------------------------|---|
| Technology | - | 5 LRA vibration motors | - |
| Intensity control | - | 256 dynamic levels (per finger) | - |
| Control rate | - | 120Hz | - |
| Feedback type | - | 1-dimensional vibro-tactile feedback | - |
| Feedback latency (wired) | - | 4ms | - |
| Feedback latency (wireless) | - | 16ms | - |

Top Module

| | | | |
|-------------------|--|--|--|
| Sensor connection | Interchangeable sensor connection | Interchangeable sensor connection | Physically attached to sensors |
| Status indication | Battery LED, Status LED | Battery LED, Status LED | Battery LED, Status LED |
| Battery LED | Charging, Fully Charged | Charging, Fully Charged | Charging, Fully Charged |
| Status LED | Connected Wired, Connected Wireless, Starting Up, Connecting, Pairing, Alert, Low Battery, Firmware Update | Connected Wired, Connected Wireless, Starting Up, Connecting, Pairing, Alert, Low Battery, Firmware Update | Connected Wired, Connected Wireless, Starting Up, Connecting, Pairing, Alert, Low Battery, Firmware Update |

Connectivity

| | | | |
|--|--|--|--|
| Connection options | Wired, Wireless | Wired, Wireless | Wired, Wireless |
| Wired communication | USB 2.0 Type-C | USB 2.0 Type-C | USB 2.0 Type-C |
| Wireless communication | MANUS Wireless Dongle (USB 2.0 Type-A) | MANUS Wireless Dongle (USB 2.0 Type-A) | MANUS Wireless Dongle (USB 2.0 Type-A) |
| Wireless dongle communication protocol | Bluetooth 5.0 | Bluetooth 5.0 | Bluetooth 5.0 |
| Wireless dongle range | Up to 15 meters (49 feet) depending on environment | Up to 15 meters (49 feet) depending on environment | Up to 15 meters (49 feet) depending on environment |
| Wireless long range accessories | MANUS Bodypack Lite | MANUS Bodypack Lite | MANUS Bodypack Lite |

Power

| | | | |
|---------------------------|--|--|--|
| Battery type | Interchangeable | Interchangeable | Interchangeable |
| Battery model | Metagloves Pro Battery | Metagloves Pro Haptic Battery | Quantum Metagloves Battery |
| Battery locking mechanism | Snap Fit | Snap Fit | Latch, User Operated |
| Battery life | Up to 3 hours of continuous use | Up to 3 hours of continuous use | Up to 3 hours of continuous use |
| Charging time | ~2 hours | ~2 hours | ~2 hours |
| Charging options | Charge installed battery via USB Type-C (USB 2.0 with 5V/0.5A) | Charge installed battery via USB Type-C (USB 2.0 with 5V/0.5A) | Charge installed battery via USB Type-C (USB 2.0 with 5V/0.5A) |
| Charging accessories | MANUS Charging Station | MANUS Charging Station | MANUS Charging Station |

METAGLOVES PRO

METAGLOVES PRO HAPTIC

QUANTUM METAGLOVES

Weight

| | | | |
|--|-------------------------|-------------------------|-------------------------|
| Glove with electronics (including battery) for a medium hand | 167 grams (5.88 ounces) | 178 grams (6.28 ounces) | 146 grams (5.15 ounces) |
|--|-------------------------|-------------------------|-------------------------|

Dimensions

| | | | |
|------------------------------|----------------------|----------------------|----------------------|
| Hand module height | 60.7mm (2.39 inches) | 60.7mm (2.39 inches) | 65.3mm (2.57 inches) |
| Hand module width | 78.2mm (3.08 inches) | 78.2mm (3.08 inches) | 89.9mm (3.54 inches) |
| Hand module depth | 34.3mm (1.35 inches) | 34.3mm (1.35 inches) | 43.2mm (1.7 inches) |
| Fingertip sensor height | 20.3mm (0.80 inch) | 20.3mm (0.80 inch) | 27.3mm (1.07 inch) |
| Fingertip sensor width | 14.6mm (0.57 inch) | 14.6mm (0.57 inch) | 14.2mm (0.56 inch) |
| Fingertip sensor depth | 9.6mm (0.38 inch) | 9.6mm (0.38 inch) | 10.4mm (0.41 inch) |
| Haptic module height | - | 12.5mm (0.49 inch) | - |
| Haptic module width | - | 12.5mm (0.49 inch) | - |
| Haptic module depth | - | 8.1mm (0.32 inch) | - |
| Wireless dongle height | 27.8mm (1.09 inches) | 27.8mm (1.09 inches) | 27.8mm (1.09 inches) |
| Wireless dongle width | 70.3mm (2.77 inches) | 70.3mm (2.77 inches) | 70.3mm (2.77 inches) |
| Wireless dongle depth | 8.5mm (0.33 inch) | 8.5mm (0.33 inch) | 8.5mm (0.33 inch) |
| Wireless dongle cable length | 43cm (16.93 inches) | 43cm (16.93 inches) | 43cm (16.93 inches) |

Gloves

| | | | |
|---------------------------------------|-------------------------------------|-------------------------------------|---|
| Glove type | Full finger glove | Full finger glove | Fingerless glove or hand strap |
| Fingertip sensor placement | Integrated in glove textile | Integrated in glove textile | Requires additional wearable |
| Fingertip sensor attachment | Removable from glove textile | Removable from glove textile | Removable from wearable |
| Fingertip sensor cables | Fully integrated, entirely enclosed | Fully integrated, entirely enclosed | Partially integrated, mostly exposed |
| Fingertip sensor wearable | - | - | Finger tape, Finger sleeve or Liner glove |
| Fingertip sensor wearable sizes | - | - | 1 size, S/M/L, XXS/XS/S/M/L/XL/XXL |
| Fingertip sensor wearable washability | - | - | No |
| Finger haptic actuator placement | - | Integrated in glove textile | - |
| Finger haptic actuator attachment | - | Removable from glove textile | - |
| Finger haptic actuator cables | - | Fully integrated, entirely enclosed | - |
| Hand module attachment | Attached with integrated latch | Attached with integrated latch | Attached with bayonet and Velcro straps |
| Hand module attachment steps | 1 | 1 | 3 |
| Glove size options | XS, S, M, L | M, L | M/L |
| Glove textile material | 72% polyester, 28% spandex | 72% polyester, 28% spandex | 72% polyester, 28% spandex |
| Glove textile washability | Yes, with electronics removed | Yes, with electronics removed | Yes, with electronics removed |



ADAM SAVAGE'S TESTED

Teleoperation of Thing from "Wednesday"
©2025 RaptorHouse FX. ©2025 Netflix



HUMANVERSE AT BONES STUDIO

Performance Capture for Digital Avatars.
Vicon Mocap System, Quantum Metagloves.

MANUS FOUNDERS

Stephan van den Brink

CEO / Co-Founder

“

We are proud to set the benchmark for hand tracking and manipulation across industries worldwide. Every day, I see our products enabling breakthroughs in robotics labs, accelerating AI training, and powering immersive experiences. My commitment is building scalable solutions for human interaction data. MANUS is here to deliver the tools you need today while continuously innovating for tomorrow's applications.

”

**Maarten Witteveen**

CTO / Co-Founder

“

At MANUS we build high precision data gloves that capture the full spectrum of human hand motion with millimeter-level accuracy. Our gloves power natural teleoperation for robots, train embodied AI, and open new ways to interact in VR/XR, entertainment, and research. I love helping creators, scientists, and engineers turn hand movements into real-world or digital action, making interactions more intuitive, precise, and human.

”



CONTACT INFORMATION

MANUS Technology Group B.V. **HEADQUARTERS**

De Hooge Akker 22 | 5661 NG
Geldrop | The Netherlands
Tel: +31 40 209 4300
sales@manus-meta.com
www.manus-meta.com

