



ONVIF COMPATIBILITY

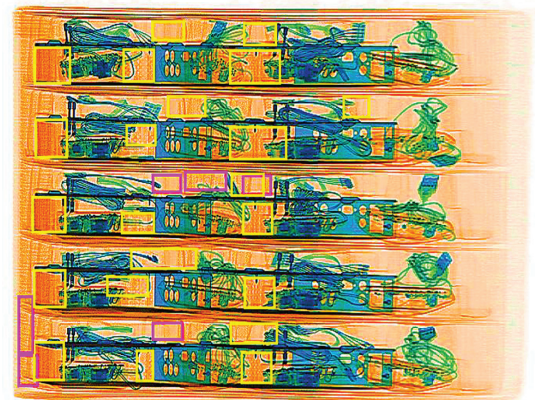
ARTIFICIAL INTELLIGENCE

SPECTRUM 180180 DV (200 kV)

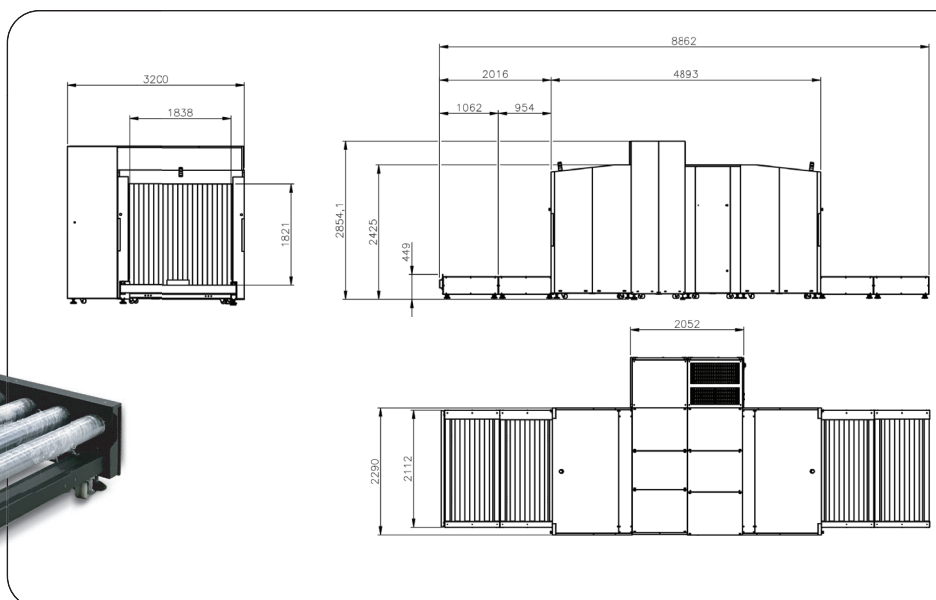
**Dual View technology with
200 kV generators for precise
threat identification.**

The Spectrum 180180 DV 200 kV is an X-ray inspection system with high level of performance, greater clarity and image quality. It was specially designed for meet the needs and applications of airports, customs services, transportation services, carriers, transport operations or any other environment where high security requires thorough screening. The dual-view technology with the 200 kV generators, allows accurate identification of load contents in a single pass.

X-ray images with high
quality and sharpness.



SPECTRUM 180180 DV (200 kV)



STANDARD FUNCTIONS

- Automatic discrimination of organic, inorganic and mixed materials by colorization
- Automatic image saving
- Baggage counter
- Continuous scanning
- Zoom higher than 128x
- Color or black / white image
- Edge highlight
- High penetration function
- Sharpness
- TIP threat image projection
- High density alert
- JPG, TIFF, BMP and VMI image export
- Network connection
- Real-time scanning
- Self-diagnosis system
- Color inversion
- Real-time image manipulation
- Automatic detection algorithm for drugs, explosives and high density materials
- Storage capacity over 60,000 images

SAFETY

- Shielding:
Dose below than 1 μ Sv / h at 0.1 m away from the equipment

OPTIONAL FUNCTIONS AND ACCESSORIES

- Customized painting
- Training software
- Local language
- Remote workstation
- Lockable anti theft console with key
- Remote management software for multiple devices
- Camera
- UPS
- Ability to integrate with conveyor system
- WiFi capability
- ONVIF compatibility
- Modular roller table

SHIPPING CRATING SIZE AND WEIGHT

Product	Package	Qty.	Length	Width	Height	Net Weight	Gross Weight
Spectrum 180180 200kV	1 - SV Module	1	3420 mm	1280 mm	2560 mm	2773 kg	2533 Kg
			134.6"	50.4"	100.8"	6113.4 lbs	5584.3 lbs
	2 - DV Module	1	3420 mm	1280 mm	3075 mm	2285 kg	2008 Kg
			134.6"	50.4"	121.1"	5037.6 lbs	4426.9 lbs
	3 - Side Module	2	2480 mm	1715 mm	2560 mm	1632 kg	1400 Kg
			97.6"	67.5"	100.8"	3597.9 lbs	3086.5 lbs
	4 - Roller Table	1	2310 mm	1200 mm	1140 mm	695 Kg	550 Kg
			90.9"	47.2"	44.9"	1532.2 lbs	1212.5 lbs
	5 - Roller Table	1	2310 mm	1200 mm	1140 mm	645 Kg	500 Kg
			90.9"	47.2"	44.9"	1422 lbs	1102.3 lbs

GENERAL DATA

- Dimensions
8862(L) / 3200(W) / 2854(H) [mm]
348.9"(L) / 126"(W) / 112.4"(H)
- Approximate weight
8391 Kg | 18499 lbs
- Operating temperature and humidity
0°C to 40°C / 5% to 95% (non-condensing)
- Storage temperature and humidity
-40°C to 60°C / 5% to 95% (non-condensing)
- Power supply
208/240 VAC (-15% to +10%);
50 Hz/60 Hz, +/-3 Hz
- Power
2200 VA

GENERAL SPECIFICATIONS

- Tunnel dimensions
1838 mm (W)/1821 mm (H) [mm]
72.36"(W) / 71.69" (H)
- Conveyor speed
0,22 m/s (adjustable)
- Conveyor height
391 mm | 15.4"
- Maximum load on the conveyor
3000 kg | 6613.9lbs
- Standard generator
200 kV (configurable)
- Wire resolution*
36 AWG
- Steel penetration*
49 mm | 1.9"
- Monitor
High resolution,
configurable size
- Cooling
Insulating oil with
forced air cooling
- Beam orientation
Sideward and Diagonal
downward

*Specification according to Test Piece VMI



LEGAL NOTICE:
VMI SECURITY RESERVES THE EXCLUSIVE RIGHT TO
EDIT THE TECHNICAL DATA OF ITS EQUIPMENT.



VMI SYSTEMS CORP
1110 Brickell Avenue, Suite 719A
Miami, FL – USA – Postal code: 33131
Phone +1 305 779 5692
WWW.VMISECURITY.COM