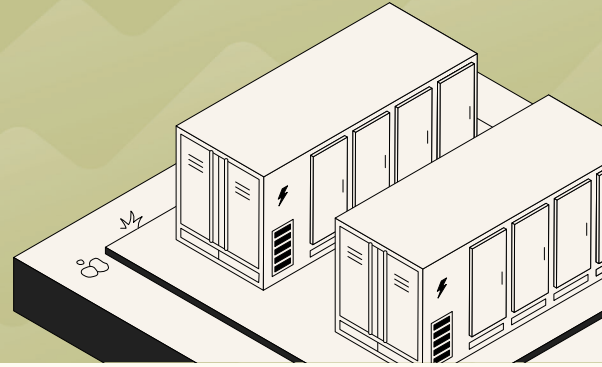


## FACT SHEET

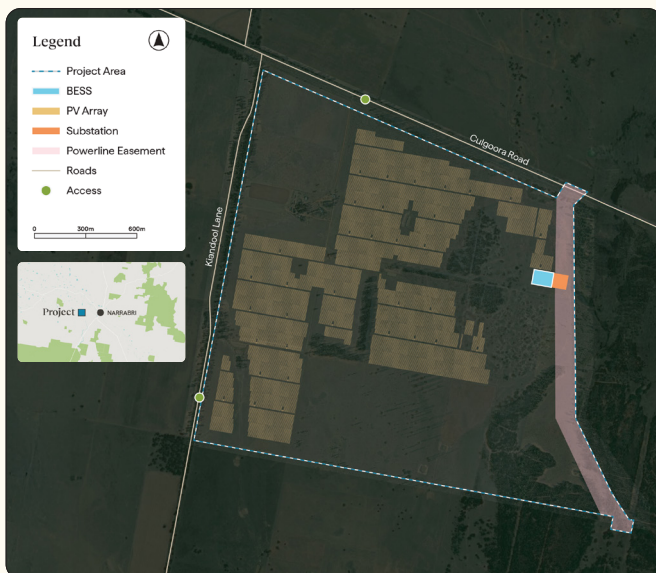
# Narrabri Hybrid Solar Battery Energy Storage System (BESS)



Avenis Energy is proposing to develop a Solar Farm and Battery Energy Storage System (BESS) (the Project) approximately 6 km west of Narrabri.

The purpose of the development is to supply renewable energy to the National Electricity Market (NEM) and support the NEM during peak demand and during adverse network operation. It will ensure stability of supply throughout the region. The Project will involve the development, construction, operation, and eventual decommissioning.

### NARRABRI SITE MAP



## The Project

The Solar Farm is expected to have a capacity of 120MW with a 2-hour storage duration – this is equivalent to powering around 60,000 households per year from the Solar Farm and 190,000\* households for two hours daily from the BESS.

The Project will incorporate the latest industry technology and adhere to all safety and hazard regulations set by the State and Australian Government.

The Project's design and layout will comply with local planning laws, CFA guidelines, and be carefully structured to minimise potential environmental impacts. It will also protect local cultural heritage, and address concerns of neighbouring communities.

The Project would include the following key components:

- Battery units
- Solar panels
- Solar panel mounting structures
- Inverter stations
- Transformers
- Switch rooms
- Switch yard
- On-site water storage
- Fire suppressions systems
- Security fencing
- Parking site
- Site office and amenities for operational use.

During construction, temporary infrastructure including construction facilities, site offices and amenities, tool and material storage sheds, construction staff car parking, component laydown areas and truck parking and unloading would also be required and commercial opportunities around Narrabri.

## Narrabri site map

The project site (outlined in a blue dotted line) would have a development footprint of approximately 400 hectares.

\*Australian Energy Regulator: State of the energy market 2023 (based on an average annual electricity consumption of 5.6MWh per household).

## The Benefits



### INCREASES CLEAN ENERGY

The Project will supply clean energy from the conversion of the sun's light into transmittable electricity. It will make a substantial contribution to the National Electricity Market and towards the government's target of zero emissions by 2050.



### INCREASES CLEAN ENERGY STORAGE

The Project will ensure the on-going supply of energy for residents, business owners and hospitals throughout the region at times of the day when the sun isn't shining.



### CREATE LOCAL JOBS

Approximately 150 full time equivalent (FTE) construction jobs and up to 5 FTE operational jobs will be generated.



### INCOME FOR LOCAL AREA

Diversify income and increase revenue to ancillary services in the local area. A huge incentive for investment in industrial and commercial opportunities.



### COMMUNITY BENEFITS

Avenis Energy is committed to supporting community benefit schemes in the local area and value the opportunity to make a positive impact. We welcome any suggestions and look forward to collaborating with local partners to ensure our efforts align with the community's needs.

## The planning & approval process

Given the significant potential that the development has in contributing to the clean energy transition and climate action targets of the state, the BESS proposal is considered as a State Significant Development (SSD) by the NSW Department of Planning, Housing and Infrastructure (DPHI).

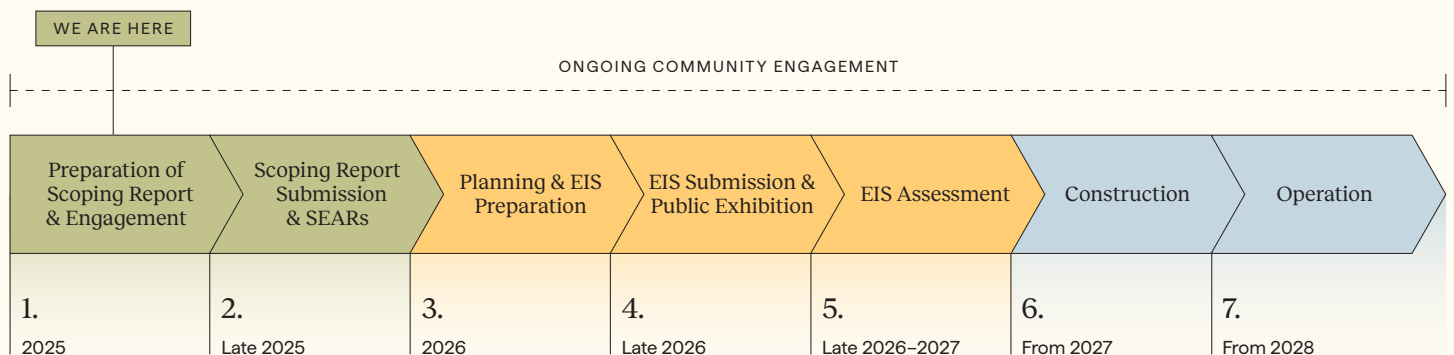
At the early stage of the development application process, a Scoping Report is submitted to DPHI that helps to determine which technical assessments will be included within the Environmental Impact Statement (EIS). Following the submission of the Scoping Report and evaluation by DPHI, Secretary Environmental Assessment Requirements (SEARs) will be issued, outlining required assessments and considerations for the EIS.

Once SEARs are supplied, EIS reporting commences. An EIS is a very in-depth document that outlines specialist assessments and contains detailed planning information regarding the development. Following completion and lodgement of the EIS document with the DPHI, the Minister for Planning will decide whether to issue a development approval.

## About Avenis Energy

Avenis Energy is dedicated to developing utility BESS projects and large-scale renewable energy projects that deliver clean, green energy into the transmission network, reducing reliance on fossil fuels and help minimise the impacts of climate change. Avenis prides itself on working closely with landowners, near neighbours, key stakeholders and the wider communities where our projects are proposed.

The Avenis team has significant experience in the industry across all elements of the development cycle, from site selection, planning and permitting to engineering, construction and operation. The team has been working together since 2018 and is entirely dedicated to the Australian market, with a proven track record of developing high quality community sensitive projects.



### QUESTIONS AND FEEDBACK

For more information and to register for project updates, please visit the project website at [avenisenergy.com.au/projects/narrabri-west](https://avenisenergy.com.au/projects/narrabri-west), or email the team at [narrabriwest@avenisenergy.com.au](mailto:narrabriwest@avenisenergy.com.au)