



# MYMATR SOLUTION BROCHURE

Transform your waste management routine with MyMatR Waste Receptacles – smart, flexible solutions tailored to your needs.

Whether you're looking for AI-powered sorting, real-time data insights, educational displays, or bin fullness monitoring, MyMatR offers a range of capabilities that make disposal smarter, more efficient, and more engaging.





OUR MISSION

# THE MYMATR PHILOSOPHY



## REVOLUTIONIZING RECYCLING

At MyMatR, we believe smarter waste management starts with knowing exactly what's in your waste.

### The First Step to Smarter Waste Starts Here

Recycling is not broken because people do not care. It is broken because there is no visibility, no feedback loop between what is purchased, what is used, and what is ultimately discarded. That is why we have developed a suite of smart waste solutions: Grouch, Coach, and Maestro. These are designed to transform waste from a mystery into actionable intelligence.

### Turn Insight Into Impact

Our mission is putting waste in its proper place. We increase recycling, cut contamination, and change how organizations manage waste. MyMatR uses AI, real-time feedback, and accurate data to link disposal actions to outcomes. This helps teams make smarter decisions, reduce costs, and unlock revenue through efficiency and stronger brand performance.



[www.mymatrcorp.com](http://www.mymatrcorp.com)



[info@mymatrcorp.com](mailto:info@mymatrcorp.com)

MADE IN AMERICA



# SOLUTION LINEUP



What's in Your Waste?

## **GROUCH**

**OBSERVE** + EDUCATE + CORRECT

The Grouch is a compact sensor unit that captures images and fullness data, delivering insights through material ID and motion tracking — all without disrupting disposal.



Educating on Proper Disposal

## **COACH**

**OBSERVE** + EDUCATE + CORRECT

The Coach is a smart bin with a built-in display that provides real-time feedback and disposal insights. It does not sort, but supports material ID, fullness detection, and is expandable to four waste streams



Sorting Waste at the Source

## **MAESTRO**

**OBSERVE** + EDUCATE + CORRECT

Maestro is an AI-powered waste bin that automatically sorts materials into one of two waste streams. It provides real-time feedback through an onboard display, reduces contamination, and promotes better recycling habits.



## COMPARISON

	Average Bin	 GROUCH	 COACH	 MAESTRO
Accepts Waste	✓	✓	✓	✓
Size & Visual Configuration	✓	✗	✓	✓
Collect Waste Images	✗	✓	✓	✓
Provides Waste Analytics	✗	✓	✓	✓
Fullness Monitor & Alerts	✗	✓	✓	✓
Audio Feedback	✗	✓	✓	✓
Visual Feedback	✗	✗	✓	✓
Weight Monitor & Alerts	✗	✗	✓	✓
Automatically Sorts Waste	✗	✗	✗	✓
Eliminates Contamination	✗	✗	✗	✓





A MYMATR FOR EVERY OCCASION

# PHYSICAL CUSTOMIZATION



## EXTERIOR WRAPS

Customize with brand colors, logos, and messaging. Use your container as both a waste station and a brand touchpoint.

## DISCARD OPENINGS

Select from a variety of discard openings to align with waste types and user workflows, ensuring ease of use and accuracy.

## AI CONFIGURATION

Collect what you want! MyMatR can configure its AI to sort what you want to recycle.

## MODULAR DESIGN

Choose a layout that suits your environment. Mix and match modules to scale functionality without adding complexity.

## DISCARD INPUT SIZE

Match your input size to the expected waste stream. Optimize for volume, material types, and user behavior.

## SIZE

Available from 24 to 96 gallons. Choose the container capacity that fits your space and waste volume.

## SCREEN DISPLAY

Provide live, educational feedback that changes behavior. Share insights on sustainability, recycling impact, and more!

## SECURITY

Customize locks, castors, anchors, and handles to ensure safety, mobility, and durability in any environment.

## CONTACT US FOR MORE DETAILS

Contact MyMatR at [mymatr@mymatrcorp.com](mailto:mymatr@mymatrcorp.com) to discuss your container sizing, appearance, and AI decision needs.


*Representational only. All rights to the logos are reserved to the respective owners.*

# DISPLAY CUSTOMIZATION



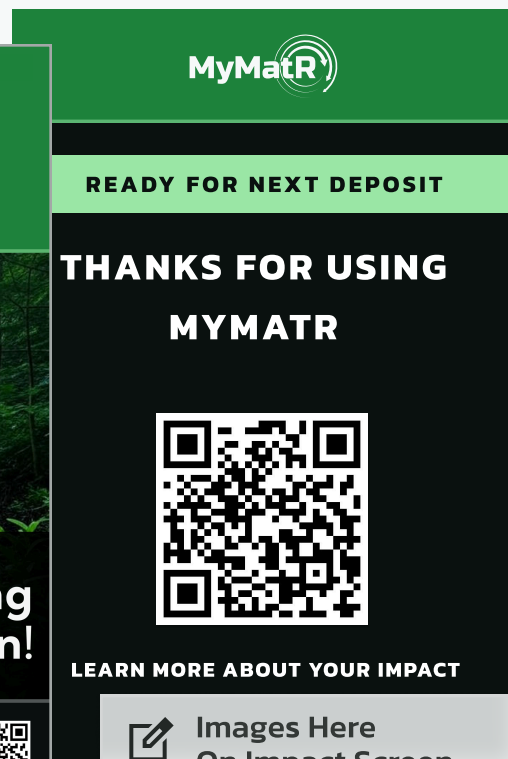
 Custom Images & Icons  
On Action Screens  
540px x 540px

 Custom Messaging

 Colors & Branding  
Can Be Adjusted



 Up to 3 Images w/ 10  
Sec Delays on Idle  
1280px x 1020px



 Images Here  
On Impact Screen  
540px x 540px

 Custom QR Codes

## ACTION SCREEN

When users deposit their waste, our display screens provide real-time feedback on their choices.

Your users will never have to worry about if something is recyclable or not again!

## IDLE SCREEN

Provide any image or video messaging to play on your device's display screen.

Let your users know the total stats that they are helping contribute to while using your MyMatR device.

## IMPACT SCREEN

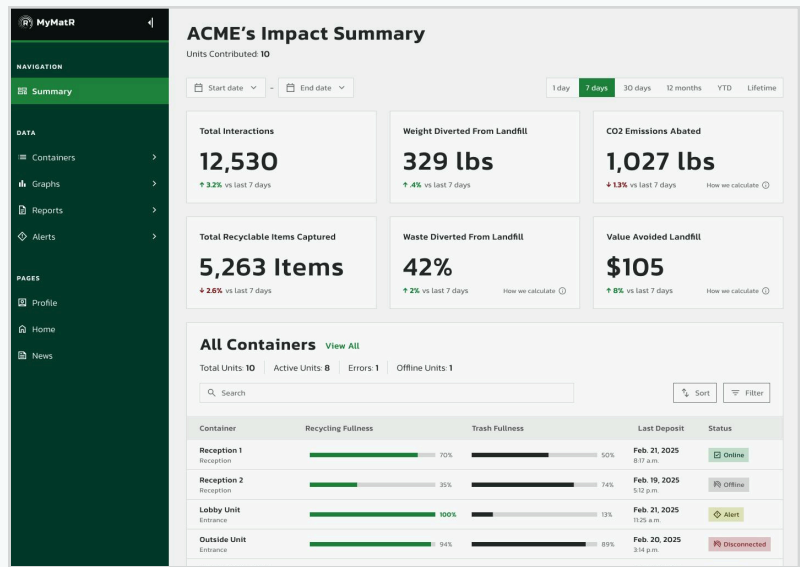
Improve user engagement by providing insight on how much each input helps towards the container's total metrics.

## EXCLUSIVE TO THE ♻️ COACH & ♻️ MAESTRO

Only the Coach and Maestro feature real-time feedback displays at the bin. The Grouch still delivers valuable insights to your organization through the dashboard, but it does not display feedback directly to users at the point of disposal.

# DATA DASHBOARD

MyMatR's dashboard offers detailed landfill diversion, recycling amounts, weight, and GHG reduction data, enabling sustainability staff to efficiently manage waste stream data and make informed decisions in real-time. This dashboard is also available as a mobile application for on-the-go data monitoring.



## OVERVIEWS OF YOUR ORGANIZATION

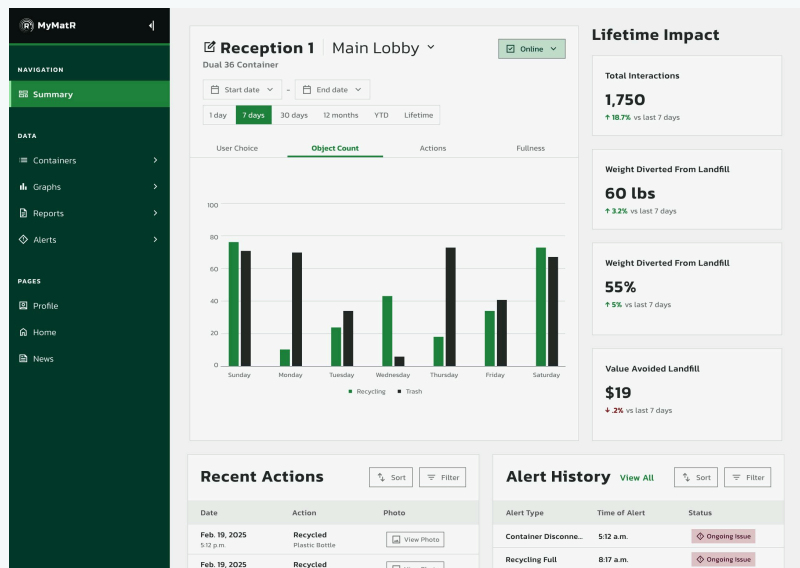
### Waste Stream Summary

Utilizing a customizable AI model, MyMatR's system instantly identifies discarded items, displaying precise knowledge of your waste stream in real-time, allowing for precise adaption to your specific waste stream requirements.

## MANAGE YOUR MYMATR CONTAINERS

### Individual Container Data

Items that are identified are sorted according to your needs into one of two bins. Both of which can be configured to suit your unique sorting needs.



## EXTENDING ENGAGEMENT

MyMatR's upcoming companion app will extend engagement beyond the bin. It will give users meaningful insights into their waste habits, reinforce proper disposal behavior, and create new opportunities for interaction and impact.



# KEY BENEFITS & VALUE PROPS

## REAL-WORLD RESULTS

### Data That Drives Action Insights That Deliver Impact

**Purchasing Teams:** Confirm recyclable/compostable items are reaching the right streams — no more guessing.

**Facility Managers:** Optimize waste contracts, eliminate unnecessary pickups, and reduce contamination fees.

**ESG Teams:** Strengthen Scope 3 data, track diversion rates, and substantiate your sustainability claims.

**Brands/CPGs:** Understand post-consumer behavior for redesign, take-back programs, and circularity reporting.

**Municipalities/Haulers:** Optimize routes, reduce contamination, and hit diversion targets with precision data.

## OPERATIONAL SAVINGS

### Turn Waste From a Cost Into an Opportunity.

Reduce hauling costs, minimize contamination fees, and optimize collection schedules through real-time waste stream insights. Know exactly which departments, buildings, or zones are generating waste, so you can make smarter contracts, fewer pickups, and avoid unnecessary penalties.

## IMPROVED DIVERSION & ESG REPORTING

### See What's Really Happening to Your Waste. Report It With Confidence.

Boost recycling rates and reduce landfill waste through AI-powered sorting, real-time user education, and precise waste stream identification. Accurate data supports Scope 3 emissions reporting, validates landfill diversion claims, and strengthens your ESG and sustainability disclosures.

## REGULATORY & EPR COMPLIANCE

### Stay Ahead of Regulations. Be Ready for What's Next.

Meet evolving local, state, and federal waste mandates with accurate tracking and reporting. Our technology helps facilities comply with Extended Producer Responsibility (EPR) programs, support diversion goals, and prepare for increasingly data-driven waste regulations.



DISCOVER HOW MYMATR CAN TRANSFORM YOUR OPERATIONS





# INDUSTRIES WE SERVE

## OUR PRIMARY INDUSTRIES

**CORPORATE  
CAMPUSES**

**ENTERTAINMENT  
VENUES**

**EDUCATIONAL  
INSTITUTIONS**

**HOTELS &  
RESORTS**

**SPORTS  
ARENAS**

**& MORE!**

We think that MyMatR has found a way to significantly improve waste capture and increase recycling processes without further burdening our landfills.

**Wes Westbrooks**

BMW Manufacturing Co. LLC, Senior Waste Specialist



MyMatR has found the solution to eliminate recycling contamination! The MyMatR waste container's sorting ability can simplify students' disposal of waste items.

**Larry Cook**

Director of Sustainability, University of South Carolina

## RESEARCH TRIANGLE PARK CASE STUDY

### Main Findings

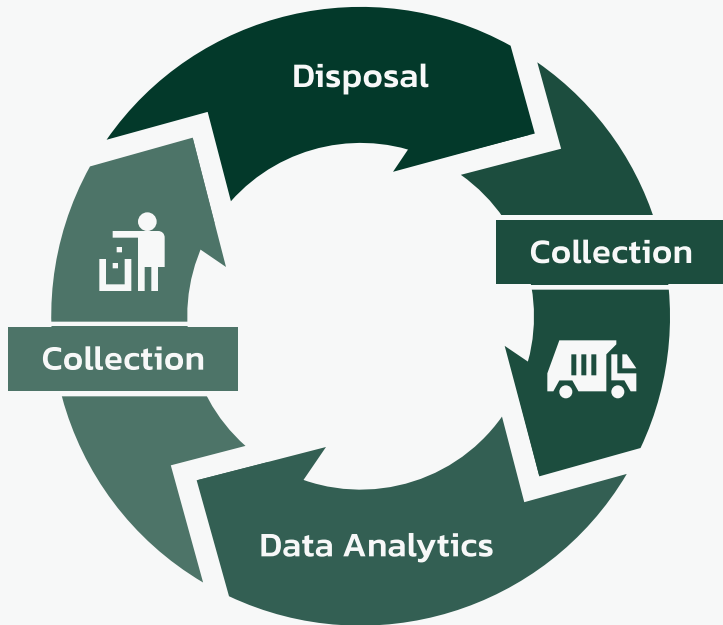
- No recycling program → missed savings & sustainability gains.
- Weak public image on waste efforts.
- Inefficient bin placement & operations.

### Recommendations:

- Smart bins with AI sorting & public dashboards.
- Data-driven insights to cut costs & improve diversion.
- Engage visitors, boost recycling, and elevate RTP as a sustainability leader.



# ARE YOU WASTING VALUE?



**Most waste systems stop at the bin, but the real value is in what happens next.**

MyMatR connects every step of the process, from smarter disposal to actionable data, helping you cut costs, boost diversion, and engage your community.

**FACILITIES SAVE TIME WITH FULLNESS SENSORS & OPTIMIZED COLLECTION ROUTES.**

**SUSTAINABILITY TEAMS CAN TRACK DIVERSION RATES IN REAL TIME.**

**MARKETING USES PUBLIC DASHBOARDS TO TELL A COMPELLING GREEN STORY.**

**FINANCE SEES LOWER HAULING COSTS AND MEASURABLE ROI.**



# MYMATR'S PRICING

Contact MyMatR to learn more about customization prices, additional service plans and bulk order discounts.



## GROUCH

Waste data  
observation only

**\$60** /unit



## COACH

Great for those focused  
on education &  
engagement

**\$1,500** /unit  
+  
**\$1,000** /add-on  
bin



## MAESTRO

Those who want to  
reduce contamination  
at the source

**\$6000** /unit

### DATA PLAN

**\$20** /unit/mo

Billed Annually

### DATA PLAN

**\$500** /unit/mo

Billed Annually

### BASIC SUPPORT PLAN

**\$50** /unit/mo

Billed Annually



[www.mymatrcorp.com](http://www.mymatrcorp.com)



[info@mymatrcorp.com](mailto:info@mymatrcorp.com)

MADE IN AMERICA





# TECH SPECS — GROUCH

## GENERAL

Installation Time: Under 5 minutes

Mounting Location: Interior Side of Bin Lid

Bin Compatibility: Fits Most 10–96 Gallon Containers

Operating Temperature: 32°F to 120°F (0°C to 49°C)

Environmental Rating: IP65 (Dust-Tight and Water Resistant)

Sensors: Accelerometer, Fullness, VOC Gas, Temperature, Humidity, Vibration

## PHYSICAL

Dimensions: 6" x 3" x 1" (Flat, Low-Profile)

Weight: <10oz

Mounting: Magnetic + Adhesive Base (for Lid Interior)

Casing: Tough, Resilient, High-Strength, Versatile Thermoplastic

## POWER

Battery: Swappable Lithium-Polymer (LiPo) Pouch

Charging: USB-C (5V Standard Phone Charger)

Runtime: Several Weeks of Typical Use With Sleep Mode

LED Indicators: Green (Power on), Orange (Low Battery)

## CONNECTIVITY

Wi-Fi: 2.4GHz (Continuous Sync to MyMatR Server)

Bluetooth: For Initial Configuration Only



# TECH SPECS — COACH

## POWER & CONNECTIVITY

Up to 4 Different Waste Streams

Installation Time: Under 10 Minutes

6 Month Warranty

Operating Temperature: -20°C to 50°C (-4°F to 122°F)

Environmental Rating: IP65 (Dust-Tight and Water Resistant)

Optional Yearly Service Contract

## PHYSICAL

Dimensions: (for Standard Dual 36 Gal): H:54" (138cm) X W: 38" (96.5cm) X D:24" (61cm)

Weight: ~100lbs

Steel Frame

3mm ACM Covers With Customizable Wrap Designs

## ELECTRONICS

Camera

Fullness Sensors

Weight Sensors

Embedded 10" Display Screen

## POWER & CONNECTIVITY

Input: 100 – 260V AC

Internet Connection: Wi-Fi & 4G/LTE



# TECH SPECS — MAESTRO

## GENERAL

Automatic Sortation

Installation Time: Under 10 Minutes

6 Month Warranty

Operating Temperature: -20°C to 50°C (-4°F to 122°F)

Environmental Rating: IP65 (Dust-Tight and Water Resistant)

Optional Yearly Service Contract

## PHYSICAL

Dimensions: (for Standard Dual 36 Gal): H:54" (138cm) X W: 38" (96.5cm) X D:24" (61cm)

Weight: ~200lbs

Steel Frame

3mm ACM Covers With Customizable Wrap Designs

## ELECTRONICS

Camera

Fullness Sensors

Weight Sensors

Embedded 10" Display Screen

## POWER & CONNECTIVITY

Input: 100 – 260V AC

Internet Connection: Wi-Fi & 4G/LTE





# FREQUENTLY ASKED QUESTIONS

## What Products Are Available Now?

The Maestro is available for immediate deployment. Coach and Grouch are scheduled for release in early 2026.

## What Can MyMatR Units Sort?

Maestro automatically sorts between trash and recycling. Coach identifies up to four waste streams. Both use AI for classification.

## How Accurate Is the Sorting?

Maestro achieves over 90 percent accuracy using AI and computer vision.

## What Kind of Feedback or Alerts Are Provided?

- Coach and Maestro provide real-time educational feedback to improve sorting behavior.
- All three products send alerts when bins are full or go offline.
- Grouch supports voice alerts and dashboard feedback through the MyMatR app.

## Do the Units Require Internet or Power?

Yes. All units require an internet connection for full functionality. Maestro needs constant AC power (110V to 240V). Coach and Grouch operate via Wi-Fi or cellular.

## How Do I Access the Data?

All data is accessible through the browser-based MyMatR dashboard, including sorting accuracy, fullness, and usage trends.

## What Is the Typical ROI?

Returns typically exceed 15 percent, depending on deployment and effective use of features such as smart logistics, branding, marketing, and waste data analysis, which together reduce operational costs and improve disposal efficiency.

## How Long Is Delivery?

Standard lead time is within 90 days. Orders over 20 units may take longer.

## Is There a Warranty?

Yes. All units come with a six-month limited warranty. Optional service plans are available for long-term support.

## Any additional questions?

Please contact the MyMatR team at [info@mymatrcorp.com](mailto:info@mymatrcorp.com)





# CONNECT TO LEARN MORE

## LET'S WORK TOGETHER



[www.mymatrcorp.com](http://www.mymatrcorp.com)



[info@mymatrcorp.com](mailto:info@mymatrcorp.com)



<https://www.linkedin.com/company/mymatr/>