



MYMATR SOLUTION BROCHURE

Transform your waste management routine with MyMatR Waste Receptacles – smart, flexible solutions tailored to your needs.

Whether you're looking for AI-powered sorting, real-time data insights, educational displays, or bin fullness monitoring, MyMatR offers a range of capabilities that make disposal smarter, more efficient, and more engaging.

Released August 13 2025



OUR MISSION

THE MYMATR PHILOSOPHY



REVOLUTIONIZING RECYCLING

At MyMatR, we believe smarter waste management starts with knowing exactly what's in your waste.

The First Step to Smarter Waste Starts Here

Recycling is not broken because people do not care. It is broken because there is no visibility, no feedback loop between what is purchased, what is used, and what is ultimately discarded. That is why we have developed a suite of smart waste solutions: Grouch, Coach, and Maestro. These are designed to transform waste from a mystery into actionable intelligence.

Turn Insight Into Impact

Our mission is putting waste in its proper place. We increase recycling, cut contamination, and change how organizations manage waste. MyMatR uses AI, real-time feedback, and accurate data to link disposal actions to outcomes. This helps teams make smarter decisions, reduce costs, and unlock revenue through efficiency and stronger brand performance.



www.mymatrcorp.com



info@mymatrcorp.com

MADE IN AMERICA



SOLUTION LINEUP



What's in Your Waste?

GROUCH

OBSERVE + EDUCATE + CORRECT

The Grouch is a compact sensor unit that captures images and fullness data, delivering insights through material ID and motion tracking — all without disrupting disposal.



Educating on Proper Disposal

COACH

OBSERVE + EDUCATE + CORRECT

The Coach is a smart bin with a built-in display that provides real-time feedback and disposal insights. It does not sort, but supports material ID, fullness detection, and is expandable to four waste streams



Sorting Waste at the Source

MAESTRO

OBSERVE + EDUCATE + CORRECT

Maestro is an AI-powered waste bin that automatically sorts materials into one of two waste streams. It provides real-time feedback through an onboard display, reduces contamination, and promotes better recycling habits.



COMPARISON

	Average Bin	 GROUCH	 COACH	 MAESTRO
Accepts Waste	✓	✓	✓	✓
Size & Visual Configuration	✓	✗	✓	✓
Collect Waste Images	✗	✓	✓	✓
Provides Waste Analytics	✗	✓	✓	✓
Fullness Monitor & Alerts	✗	✓	✓	✓
Audio Feedback	✗	✓	✓	✓
Visual Feedback	✗	✗	✓	✓
Weight Monitor & Alerts	✗	✗	✓	✓
Automatically Sorts Waste	✗	✗	✗	✓
Eliminates Contamination	✗	✗	✗	✓



A MYMATR FOR EVERY OCCASION

PHYSICAL CUSTOMIZATION



EXTERIOR WRAPS

Customize with brand colors, logos, and messaging. Use your container as both a waste station and a brand touchpoint.

DISCARD OPENINGS

Select from a variety of discard openings to align with waste types and user workflows, ensuring ease of use and accuracy.

AI CONFIGURATION

Collect what you want! MyMatR can configure its AI to sort what you want to recycle.

MODULAR DESIGN

Choose a layout that suits your environment. Mix and match modules to scale functionality without adding complexity.

DISCARD INPUT SIZE

Match your input size to the expected waste stream. Optimize for volume, material types, and user behavior.

SIZE

Available from 24 to 96 gallons. Choose the container capacity that fits your space and waste volume.

SCREEN DISPLAY

Provide live, educational feedback that changes behavior. Share insights on sustainability, recycling impact, and more!

SECURITY

Customize locks, castors, anchors, and handles to ensure safety, mobility, and durability in any environment.

CONTACT US FOR MORE DETAILS

Contact MyMatR at mymatr@mymatrcorp.com to discuss your container sizing, appearance, and AI decision needs.

Representational only. All rights to the logos are reserved to the respective owners.



www.mymatrcorp.com



info@mymatrcorp.com

MADE IN AMERICA



DISPLAY CUSTOMIZATION



 Custom Images & Icons
On Action Screens
540px x 540px

 Custom Messaging

 Colors & Branding
Can Be Adjusted



 Up to 3 Images w/ 10
Sec Delays on Idle
1280px x 1020px



 Images Here
On Impact Screen
540px x 540px

 Custom QR Codes

ACTION SCREEN

When users deposit their waste, our display screens provide real-time feedback on their choices.

Your users will never have to worry about if something is recyclable or not again!

IDLE SCREEN

Provide any image or video messaging to play on your device's display screen.

Let your users know the total stats that they are helping contribute to while using your MyMatR device.

IMPACT SCREEN

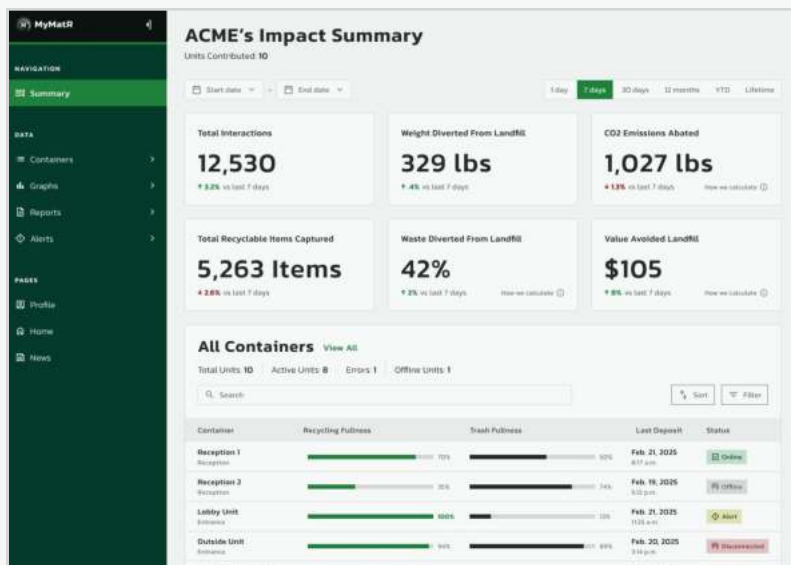
Improve user engagement by providing insight on how much each input helps towards the container's total metrics.

EXCLUSIVE TO THE ♻️ COACH & ♻️ MAESTRO

Only the Coach and Maestro feature real-time feedback displays at the bin. The Grouch still delivers valuable insights to your organization through the dashboard, but it does not display feedback directly to users at the point of disposal.

DATA DASHBOARD

MyMatR's dashboard offers detailed landfill diversion, recycling amounts, weight, and GHG reduction data, enabling sustainability staff to efficiently manage waste stream data and make informed decisions in real-time. This dashboard is also available as a mobile application for on-the-go data monitoring.



OVERVIEWS OF YOUR ORGANIZATION

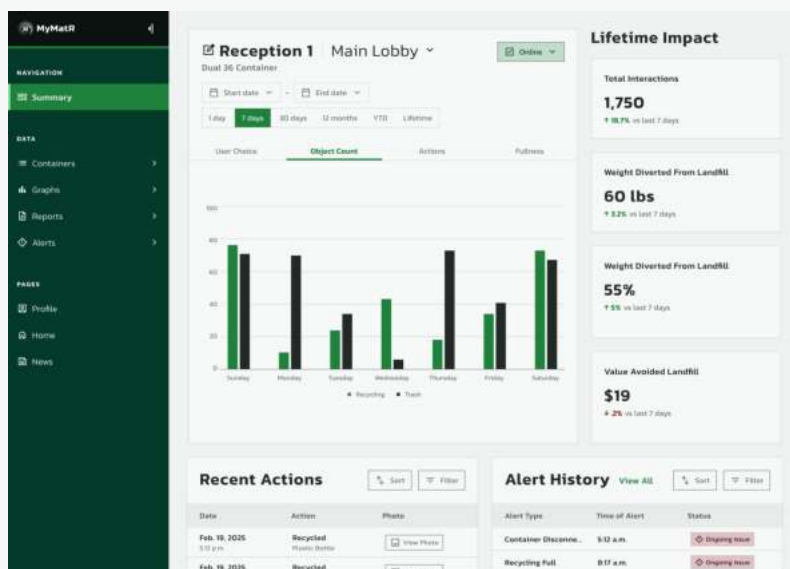
Waste Stream Summary

Utilizing a customizable AI model, MyMatR's system instantly identifies discarded items, displaying precise knowledge of your waste stream in real-time, allowing for precise adaption to your specific waste stream requirements.

MANAGE YOUR MYMATR CONTAINERS

Individual Container Data

Items that are identified are sorted according to your needs into one of two bins. Both of which can be configured to suit your unique sorting needs.



EXTENDING ENGAGEMENT

MyMatR's upcoming companion app will extend engagement beyond the bin. It will give users meaningful insights into their waste habits, reinforce proper disposal behavior, and create new opportunities for interaction and impact.



KEY BENEFITS & VALUE PROPS

REAL-WORLD RESULTS

Data That Drives Action Insights That Deliver Impact

Purchasing Teams: Confirm recyclable/compostable items are reaching the right streams — no more guessing.

Facility Managers: Optimize waste contracts, eliminate unnecessary pickups, and reduce contamination fees.

ESG Teams: Strengthen Scope 3 data, track diversion rates, and substantiate your sustainability claims.

Brands/CPGs: Understand post-consumer behavior for redesign, take-back programs, and circularity reporting.

Municipalities/Haulers: Optimize routes, reduce contamination, and hit diversion targets with precision data.

OPERATIONAL SAVINGS

Turn Waste From a Cost Into an Opportunity.

Reduce hauling costs, minimize contamination fees, and optimize collection schedules through real-time waste stream insights. Know exactly which departments, buildings, or zones are generating waste, so you can make smarter contracts, fewer pickups, and avoid unnecessary penalties.

IMPROVED DIVERSION & ESG REPORTING

See What's Really Happening to Your Waste. Report It With Confidence.

Boost recycling rates and reduce landfill waste through AI-powered sorting, real-time user education, and precise waste stream identification. Accurate data supports Scope 3 emissions reporting, validates landfill diversion claims, and strengthens your ESG and sustainability disclosures.

REGULATORY & EPR COMPLIANCE

Stay Ahead of Regulations. Be Ready for What's Next.

Meet evolving local, state, and federal waste mandates with accurate tracking and reporting. Our technology helps facilities comply with Extended Producer Responsibility (EPR) programs, support diversion goals, and prepare for increasingly data-driven waste regulations.



DISCOVER HOW MYMATR CAN TRANSFORM YOUR OPERATIONS



INDUSTRIES WE SERVE

OUR PRIMARY INDUSTRIES

**CORPORATE
CAMPUSES**

**ENTERTAINMENT
VENUES**

**EDUCATIONAL
INSTITUTIONS**

**HOTELS &
RESORTS**

**SPORTS
ARENAS**

& MORE!

We think that MyMatR has found a way to significantly improve waste capture and increase recycling processes without further burdening our landfills.

Wes Westbrooks

BMW Manufacturing Co. LLC, Senior Waste Specialist



MyMatR has found the solution to eliminate recycling contamination! The MyMatR waste container's sorting ability can simplify students' disposal of waste items.

Larry Cook

Director of Sustainability, University of South Carolina

RESEARCH TRIANGLE PARK CASE STUDY

Main Findings

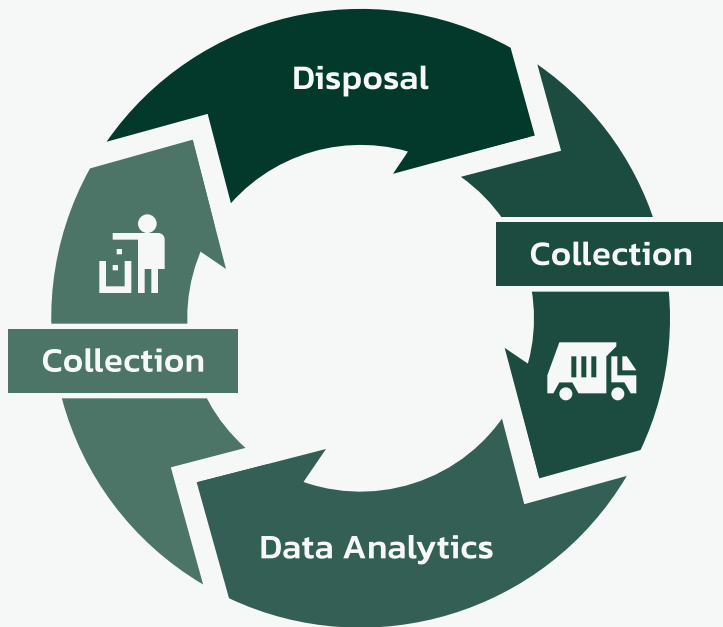
- No recycling program → missed savings & sustainability gains.
- Weak public image on waste efforts.
- Inefficient bin placement & operations.

Recommendations:

- Smart bins with AI sorting & public dashboards.
- Data-driven insights to cut costs & improve diversion.
- Engage visitors, boost recycling, and elevate RTP as a sustainability leader.



ARE YOU WASTING VALUE?



Most waste systems stop at the bin, but the real value is in what happens next.

MyMatR connects every step of the process, from smarter disposal to actionable data, helping you cut costs, boost diversion, and engage your community.

FACILITIES SAVE TIME WITH FULLNESS SENSORS & OPTIMIZED COLLECTION ROUTES.

SUSTAINABILITY TEAMS CAN TRACK DIVERSION RATES IN REAL TIME.

MARKETING USES PUBLIC DASHBOARDS TO TELL A COMPELLING GREEN STORY.

FINANCE SEES LOWER HAULING COSTS AND MEASURABLE ROI.

MYMATR'S PRICING

Contact MyMatR to learn more about customization (size and appearance) prices, additional service plans and bulk order discounts.



GROUCH

Waste data
observation only

\$60 /unit

DATA PLAN

\$20 /unit/mo

Billed Annually



COACH

Great for those focused
on education &
engagement

\$1,500 /unit
+
\$1,000 /add-on bin

Starting price
based on 36-gallon bins

DATA PLAN

\$500 /unit/mo

Billed Annually



MAESTRO

Those who want to
reduce contamination
at the source

\$6000 /unit

Starting price
based on 36-gallon bins

BASIC SUPPORT PLAN

\$50 /unit/mo

Billed Annually



TECH SPECS — GROUCH

GENERAL

Installation Time: Under 5 minutes

Mounting Location: Interior Side of Bin Lid

Bin Compatibility: Fits Most 10–96 Gallon Containers

Operating Temperature: 32°F to 120°F (0°C to 49°C)

Environmental Rating: IP65 (Dust-Tight and Water Resistant)

Sensors: Accelerometer, Fullness, VOC Gas, Temperature, Humidity, Vibration

PHYSICAL

Dimensions: 6" x 3" x 1" (Flat, Low-Profile)

Weight: <10oz

Mounting: Magnetic + Adhesive Base (for Lid Interior)

Casing: Tough, Resilient, High-Strength, Versatile Thermoplastic

POWER

Battery: Swappable Lithium-Polymer (LiPo) Pouch

Charging: USB-C (5V Standard Phone Charger)

Runtime: Several Weeks of Typical Use With Sleep Mode

LED Indicators: Green (Power on), Orange (Low Battery)

CONNECTIVITY

Wi-Fi: 2.4GHz (Continuous Sync to MyMatR Server)

Bluetooth: For Initial Configuration Only



TECH SPECS — COACH

POWER & CONNECTIVITY

Up to 4 Different Waste Streams

Installation Time: Under 10 Minutes

6 Month Warranty

Operating Temperature: -20°C to 50°C (-4°F to 122°F)

Environmental Rating: IP65 (Dust-Tight and Water Resistant)

Optional Yearly Service Contract

PHYSICAL

Dimensions: (for Standard Dual 36 Gal): H:54" (138cm) X W: 38" (96.5cm) X D:24" (61cm)

Weight: ~100lbs

Steel Frame

3mm ACM Covers With Customizable Wrap Designs

ELECTRONICS

Camera

Fullness Sensors

Weight Sensors

Embedded 10" Display Screen

POWER & CONNECTIVITY

Input: 100 – 260V AC

Internet Connection: Wi-Fi & 4G/LTE



TECH SPECS — MAESTRO

GENERAL

Automatic Sortation

Installation Time: Under 10 Minutes

6 Month Warranty

Operating Temperature: -20°C to 50°C (-4°F to 122°F)

Environmental Rating: IP65 (Dust-Tight and Water Resistant)

Optional Yearly Service Contract

PHYSICAL

Dimensions: (for Standard Dual 36 Gal): H:54" (138cm) X W: 38" (96.5cm) X D:24" (61cm)

Weight: ~200lbs

Steel Frame

3mm ACM Covers With Customizable Wrap Designs

ELECTRONICS

Camera

Fullness Sensors

Weight Sensors

Embedded 10" Display Screen

POWER & CONNECTIVITY

Input: 100 – 260V AC

Internet Connection: Wi-Fi & 4G/LTE



FREQUENTLY ASKED QUESTIONS

What Products Are Available Now?

The Maestro is available for immediate order. Coach and Grouch are scheduled for market release in early 2026.

What Can MyMatR Units Sort?

Maestro sorts waste streams, typically trash and recycling, while Coach identifies up to four but does not sort. Both use AI for classification.

How Accurate Is the Sorting?

All MyMatR products deliver over 90% accuracy with AI powered by visual recognition.

What Kind of Feedback or Alerts Are Provided?

Coach and Maestro provide real-time feedback to improve sorting, all products send alerts when bins are full or offline, and Grouch adds voice alerts and dashboard feedback in the MyMatR app.

Do the Units Require Power or Internet?

Maestro and Coach needs constant AC power (110V to 240V) and connect to the internet via Wi-Fi or cellular. Grouch operates on rechargeable batteries or USB-C connection and is Wi-Fi only.

How Do I Access the Data?

All data is accessible through the browser-based MyMatR dashboard, including sorting accuracy, fullness, and usage trends.

What Is the Typical ROI?

Returns typically exceed 15 percent, depending on deployment and effective use of features such as smart logistics, branding, marketing, and waste data analysis, which together reduce operational costs and improve disposal efficiency.

How Long Is Delivery?

Standard lead time is within 90 days. Orders over 20 units may take longer.

Is There a Warranty?

Yes. All units come with a six-month limited warranty. Optional service plans are available for long-term support.

Any additional questions?

Please contact the MyMatR team at info@mymatrcorp.com





CONNECT TO LEARN MORE

LET'S WORK TOGETHER



www.mymatrcorp.com



info@mymatrcorp.com



<https://www.linkedin.com/company/mymatr/>

MYMATR PRIVACY POLICY

This Privacy Policy ("Policy") describes how MyMatR, Inc. ("MyMatR," "Company," "we," "us," or "our") collects, uses, stores, and discloses information from its customers ("you" or "your") who access and use our browser-based dashboard and related services (collectively, the "Services").

By accessing or using the Services, you acknowledge that you have read and understood this Policy. If you do not agree with the terms outlined below, you must discontinue use of the Services.

1. Scope of Policy

This Policy applies to all information collected through your use of the MyMatR dashboard and related services. It does not apply to public website visitors or mobile applications, as no such applications are currently in use.

2. Information We Collect

We may collect the following categories of information during your use of the Services:

- (a) Waste Data: Material type, timestamps, waste volume, and waste deposit images
- (b) Sensor Data: Bin fullness levels and depositor behavior analytics
- (c) Contact Information: Names and email addresses of account holders
- (d) Organizational Data: Facility names, types, and locations
- (f) Technical Information: IP addresses, browser details, and device identifiers

3. How We Use Your Information

MyMatR uses the information collected for the following business purposes:

- (a) To deliver, maintain, and improve the Services
- (b) To provide reporting, analytics, and dashboard functionality
- (c) To perform system diagnostics and operational monitoring
- (e) To enhance and train AI models that support product functionality
- (e) To communicate with you and fulfill contractual obligations

We do not sell your personal data or facility-specific data to third parties.

4. Data Sharing and Disclosure

We do not disclose your data to third parties except under the following limited circumstances:

- (a) With infrastructure or service providers essential to delivering our Services (e.g., hosting platforms);
- (b) With integration partners or collaborators, only at your request



MYMATR PRIVACY POLICY

- (c) With government or regulatory authorities, when required by law;
- (d) With your prior written consent, for use in anonymized or aggregated form in case studies or marketing materials

5. Data Security

All data is encrypted in transit and at rest using industry-standard protocols. Our systems are hosted on secure servers located in the United States and maintained in compliance with applicable data protection regulations.

6. International Users

If you are located outside the United States, please be advised that your data will be transferred to and processed in the United States. MyMatR implements appropriate safeguards to meet applicable international data protection standards, including those under the General Data Protection Regulation (GDPR).

7. Cookies and Tracking

Our browser-based dashboard may use cookies or similar technologies to enhance functionality and measure usage. You can adjust your browser settings to reject non-essential cookies.

8. Your Rights

Subject to applicable law, you may:

- (a) Request access to the personal data we hold
- (b) Request correction or deletion of your data
- (c) Object to or restrict certain types of data processing
- (d) Request data portability
- (e) Terminate your account and request data deletion in writing by contacting info@mymatrcorp.com

9. Data Retention

We retain data for the duration of your service agreement. If you do not renew your data access within thirty (30) days of expiration, your access may be suspended. Reactivation fees may apply.

Upon termination of services, your data will be deleted or anonymized within sixty (60) days, unless a longer retention period is required by law.

10. Contact Information

For questions or to exercise your data rights, please contact:
MyMatR, Inc.

Email: info@mymatrcorp.com

Mailing Address: 4501 New Bern Ave, Ste 130-226, Raleigh, NC 27610



MYMATR TERMS OF SERVICE

These Terms of Service ("Terms") govern your access to and use of the services, dashboards, hardware, and associated platforms provided by MyMatR, Inc. ("MyMatR," "Company," "we," "us," or "our"). By accessing or using the Services, you ("Customer," "you," or "your") agree to be bound by these Terms, which are incorporated by reference into any applicable executed agreement, including the Contract of Sale.

If you are entering into these Terms on behalf of a business or organization, you represent that you have the authority to bind that entity to these Terms.

1. Eligibility

The Services are available to organizations and their representatives who are authorized to enter into binding agreements on behalf of the purchasing entity. Individuals accessing the Services must have legal authority to act on behalf of the organization.

2. Scope of Services

MyMatR provides AI-powered hardware designed for waste identification and, in some models, automatic waste sorting. These devices are sold directly to customers and shipped to the specified address.

Services include:

- (a) Browser-based dashboard access (no mobile app)
- (b) Real-time and historical waste data;
- (c) Material identification, timestamps, and volume records;
- (d) System diagnostics, analytics, and reporting tools;
- (e) Optional service plans for out-of-warranty hardware;
- (f) Unlimited user logins under a single organization account;

3. Account Responsibilities

You are responsible for maintaining the confidentiality of your login credentials and for all actions under your account. You agree to promptly notify MyMatR of any unauthorized access or use.

4. Permitted Use and Restrictions

You may not:

- (a) Use the Services in violation of any applicable laws;
- (b) Disrupt or compromise the security or performance of the Services;
- (c) Reverse engineer, decompile, or alter the platform or hardware;
- (d) Infringe on any intellectual property rights;
- (f) Extract or misuse data beyond its intended purpose;



MYMATR TERMS OF SERVICE

5. Ownership, Data Use, and Privacy

MyMatR retains ownership of all intellectual property related to its platforms, hardware, software, and AI models.

Customers retain full ownership of all data generated by their MyMatR devices. MyMatR may use this data internally to improve AI performance and product functionality. Collected data may include email addresses, waste deposit images, bin fullness levels, and depositor behavior.

MyMatR does not share customer data with the public, third parties, or other customers without prior written consent. Any use of anonymized or aggregated data for marketing or case studies requires prior written approval from the Customer.

Customers may request permanent deletion of their data by submitting a written request. If data access lapses, a 30-day grace period applies before suspension. Reactivation fees may apply. For additional details, refer to the MyMatR Privacy Policy.

6. Payment and Billing

All pricing and billing terms are governed by the executed Contract of Sale.

- (a)** Dashboard and data access are billed annually on a per-unit basis.
- (b)** The first year of access is included with the initial purchase.
- (c)** Each customer may register unlimited user logins under a single account.
- (d)** If renewal payment is not received within thirty (30) days of the renewal date, access may be suspended.
- (e)** A 30-day grace period applies. Reactivation fees may apply.

7. Hardware Warranty and Support

MyMatR provides a six-month limited warranty covering material and workmanship defects under normal use. Warranty claims are evaluated on a case-by-case basis and may result in:

- (a)** Repair of the unit
- (b)** Replacement with a new or refurbished unit
- (c)** An alternate resolution proposed by MyMatR

Damage caused by misuse, unauthorized alterations, or external events is not covered. Software, connectivity, and data access are excluded from warranty coverage. Return shipping is not included unless otherwise agreed.

Devices outside the warranty period may be eligible for repair or replacement through a paid MyMatR service plan.



MYMATR TERMS OF SERVICE

The Services are provided “as is” and “as available,” without any additional express or implied warranties beyond those stated above.

8. Confidentiality

Each party agrees to treat all non-public business, operational, and technical information shared during use of the Services as confidential. This obligation remains in effect after termination.

9. Limitation of Liability

To the fullest extent permitted by law, MyMatR is not liable for indirect, incidental, or consequential damages. Total liability is limited to the amount paid by the Customer for Services in the twelve (12) months prior to the claim.

10. Termination

You may terminate Services at any time with written notice. MyMatR may suspend or terminate Services for breach of these Terms, non-payment, misuse, or legal compliance.

Upon termination, access to the dashboard will be disabled. Data will be deleted or anonymized per MyMatR’s data retention policy and applicable law.

11. Governing Law and Dispute Resolution

These Terms are governed by the laws of the State of North Carolina. Disputes shall first be addressed through mediation, followed by binding arbitration if necessary. All proceedings shall be conducted in Wake County, North Carolina, in English. This jurisdiction applies to all customers, including those outside the United States.

12. Modifications

MyMatR reserves the right to update these Terms. Any changes will be published with an updated effective date. Continued use of the Services implies acceptance of the revised Terms.

13. Contact

MyMatR, Inc.
Email: info@mymatrcorp.com
Address: 4501 New Bern Ave, Ste 130-226
Raleigh, NC 27610
USA

