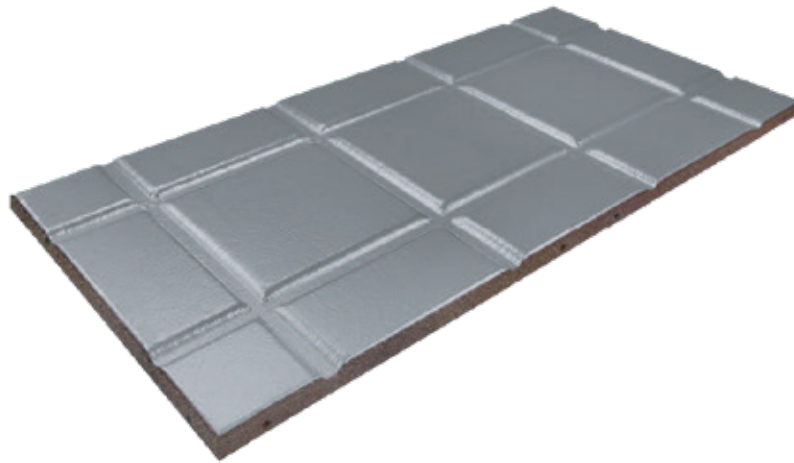


MAINTENANCE PATHS RANGE

REGUPOL® WALKWAY ALI



UNIVERSAL MAINTENANCE PATH FOR ALL WATERPROOFING SYSTEMS

- The protective layer Regupol Walkway Ali is used to protect the waterproofing and to mark maintenance paths on flat roofs.
 - Laminated on the underside with an Aluminium triplex foil.
 - Aluminium foil lamination prevents plasticiser migration.
 - Use on all standard waterproofing systems is guaranteed.
- Application: constructing and marking maintenance paths and working areas for photovoltaic, solar, antenna or technical systems on flat roofs.
- Lower weight compared to concrete paving slabs enables installation even where static restrictions are in force.
- The flame-retardant finish ensures resistance to flying sparks and radiant heat. The product is therefore classified as 'hard roofing' (BROOF t1).