

# PEDECK

## CRADLE 1250



### CRADLE FOR JOIST MOUNTING & LEVELLING

purpose designed to provide a secure, stable, time-saving and economical system which can be used for joist mounting and levelling.

The Pedeck CRADLE1250 system is ideal for low-rise floors or decking on balconies, patios and roof terraces. The cradle is also ideal for supporting and raising floors in buildings - eliminating the need for levelling screeds before floor laying can start.

The recycled plastic body is designed to support standard 2" Joists, keeping them off the concrete base, roof deck or balcony /patio surface and away from water or drainage areas when used externally.

A minimum distribution of 12 supports per square meter is recommended, with joists placed at 400mm to 500mm centres.

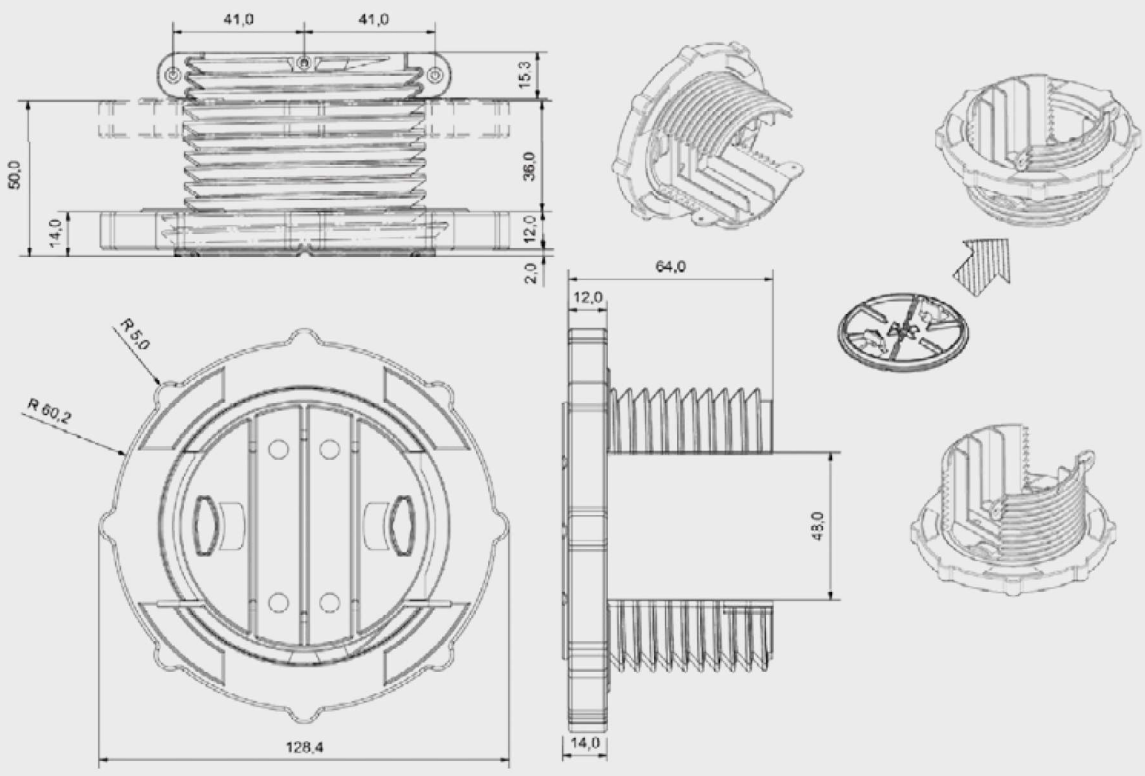
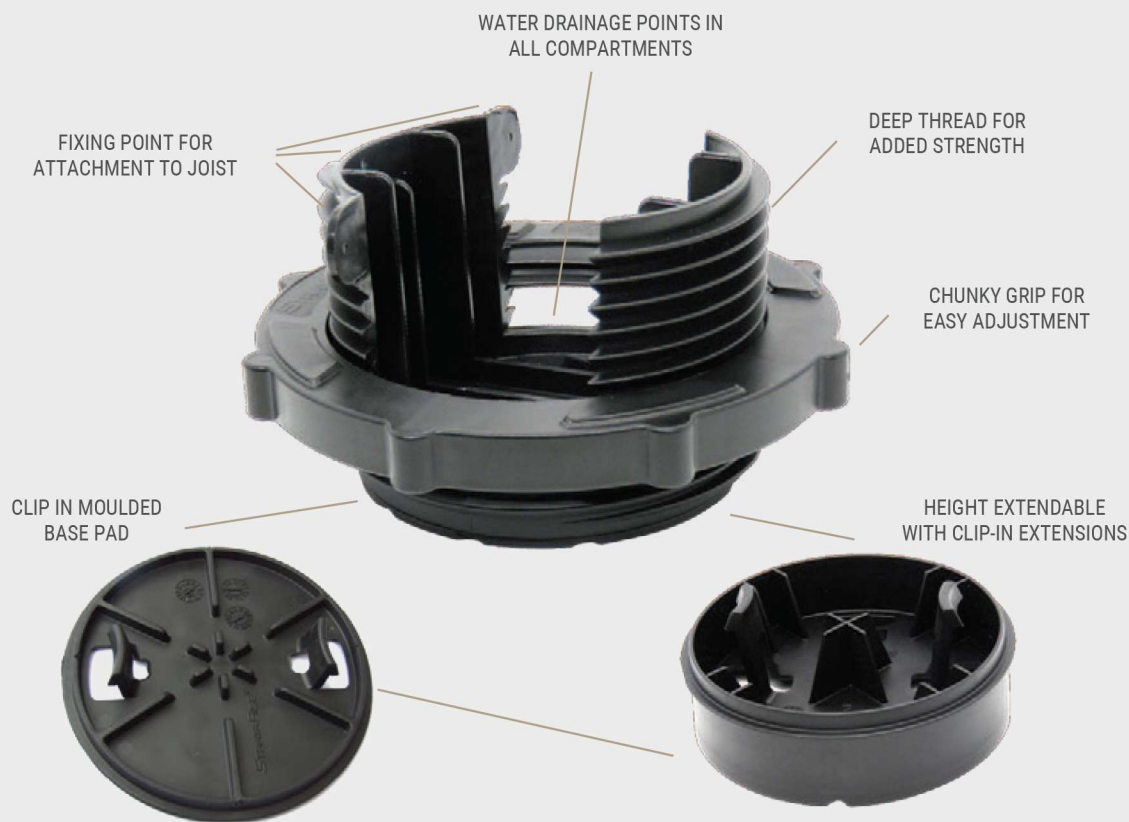
Load capacity can be increased by using additional supports. When installing heavy, pre-built joist frameworks, take care not to overload any single point of support during initial levelling.

This can be avoided by using support wedges or jacks to reduce the weight at corners until the required distribution of supports are in place and adjusted.

Material	Polypropylene
Surface Composition	Fixing points / flanges for joist
Under Side Composition	Rubber base pad (included) clipped into cradle base
Side Composition	Handle thread for adjustment, no key required
Height Range	12-50mm – 20mm ext available
Dimensional Information	128mm Width, 64mm Height
Compression Resistance	16kN = 1.6T of point load pressure = 4T/m2 weight
Water Drainage	Integrated drainage channels on base pad

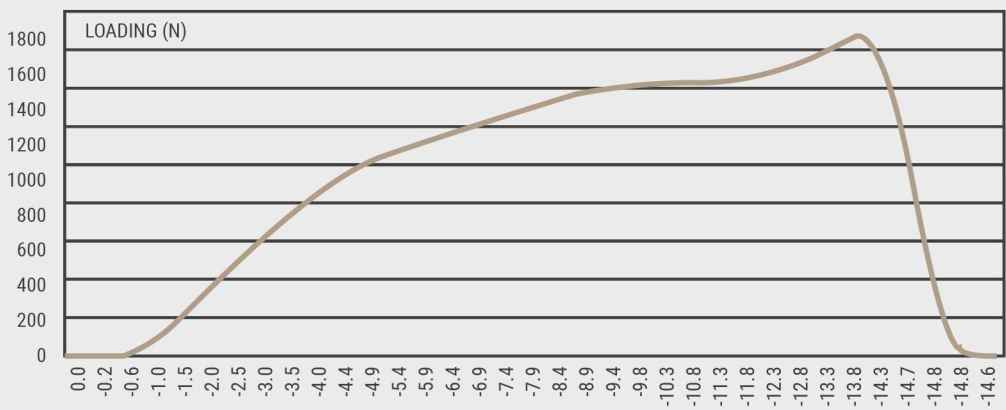
For more information please contact us.

# DETAIL INFORMATION

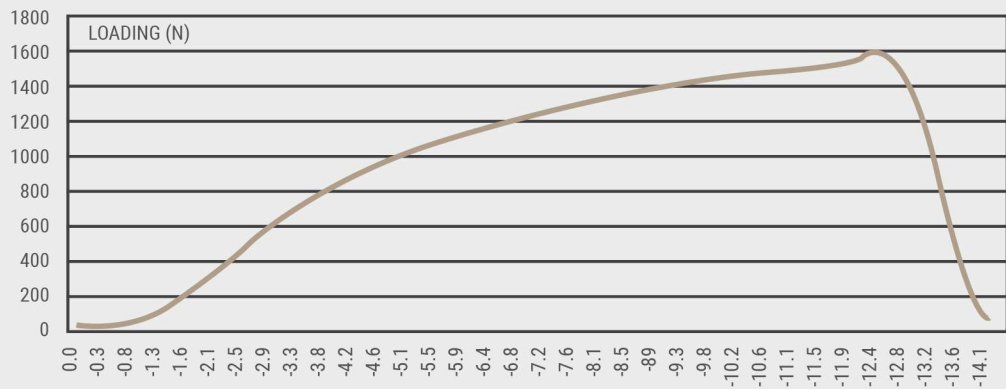


# LOAD TESTING INFORMATION

PEDECK CRADLE1250 TEST 1



PEDECK CRADLE1250 TEST 2



## COMPONENT OVERVIEW



Cradle adjusted to lowest point.



Cradle with joist affixed.



20mm extender.



Rubber base pad.



Cradle with one 20mm extension.



Cradle with two 20mm extensions.



Cradle with three 20mm extensions.