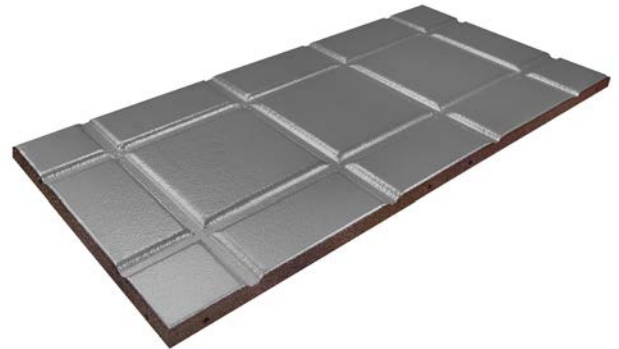


## PRODUCT DATA SHEET

### REGUPOL WALKWAY ALU

#### Roofing and pavement tiles

- The protective layer **REGUPOL walkway alu** is used to protect the waterproofing and to mark maintenance paths on flat roofs.
- Laminated on the underside with an aluminium triplex foil.
- Aluminium foil lamination prevents plasticiser migration.
- Use on all standard waterproofing systems is guaranteed.
- Application: constructing and marking maintenance paths and working areas for photovoltaic, solar, antenna or technical systems on flat roofs.
- Lower weight compared to concrete paving slabs enables installation even where static restrictions are in force.
- The flame-retardant finish ensures resistance to flying sparks and radiant heat. The product is therefore classified as 'hard roofing' (B<sub>ROOF</sub> t1).



#### Product

Name of Product	<b>REGUPOL walkway alu</b>	
Colour	redbrown, black or green	
Material	granules, lined with a triplex aluminium foil on its underside	
Thickness	1,000 x 500 x 30 mm / 1,000 x 500 x 43 mm	
<b>Technical Data</b>		
Weight per m <sup>2</sup>	30 mm = 25.76 kg/m <sup>3</sup> / 43 mm = 36.92 kg	
Tensile Strength* (without lamination)	0.60 N/mm <sup>2</sup>	following DIN EN ISO 1798
Elongation at Break* (without lamination)	50 %	following DIN EN ISO 1798
Tear Resistance* (without lamination)	5.0 N/mm	following DIN ISO 34-1
Stress at 20 % Compression (without lamination)	0.60 N/mm <sup>2</sup>	DIN EN ISO 3386-2
Temperature Resistance	up to 80° C, shortly up to 100° C	
Fire Resistance	BROOF (t1)	DIN EN 13501-1

The above-mentioned test data are based on periodical laboratory testing of test specimen taken from the actual manufacturing process and show the average values measured. The publishing of these technical data does not relieve the user of the necessity to test the relevant product for physical fitness based on a specific application. As the final use and application of our products are out of our control, this is the sole responsibility of the buyer / end user. All our products do carry a warranty against manufacturer's defects according to our standard terms and conditions of sale. Due to deviations in raw materials, external influences like temperature and humidity variations, and the fact that this data relates to a resilient material the above-mentioned values are subject to vary up to +/- 25%.

\* Approx. 10 mm of an element will be splitted off and punched out as per the corresponding standard in order to determinate the test results.