



FRIENDS IN LOW PLACES **PRIVATE EVENTS**



www.friendsbarnashville.com
events@friendsbarnashville.com | (615) 669-4711

THE HONKY-TONK

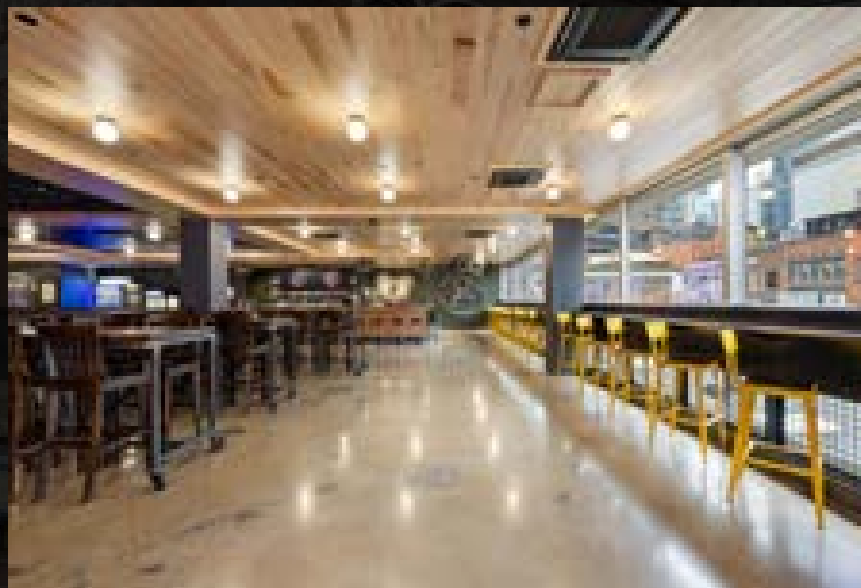
LOCATION: 1ST + 2ND FLOORS
CAPACITY: 1,075
APPROXIMATELY 13,030 SQFT

The first two floors are an ode to traditional honky-tonks everywhere. The unmatched setup, installed by the same team who have toured the world with Brooks, features the largest LED screens on Broadway and the latest in sound and lighting technology.

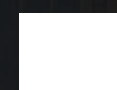
The stage sits at the heart of the building where musicians perform on a custom-built, retractable stage. It proudly features the Circle G emblem, repurposed from the Central Park stage where Garth Brooks performed to a record-breaking audience of over a million people.

The first floor features two bars, ample seating, and an expansive dance floor. The second floor features an additional two bars and a mezzanine, offering a birds-eye view of the stage. The second floor also features a drink rail along the front of the building, with sliding windows that open onto Broadway.



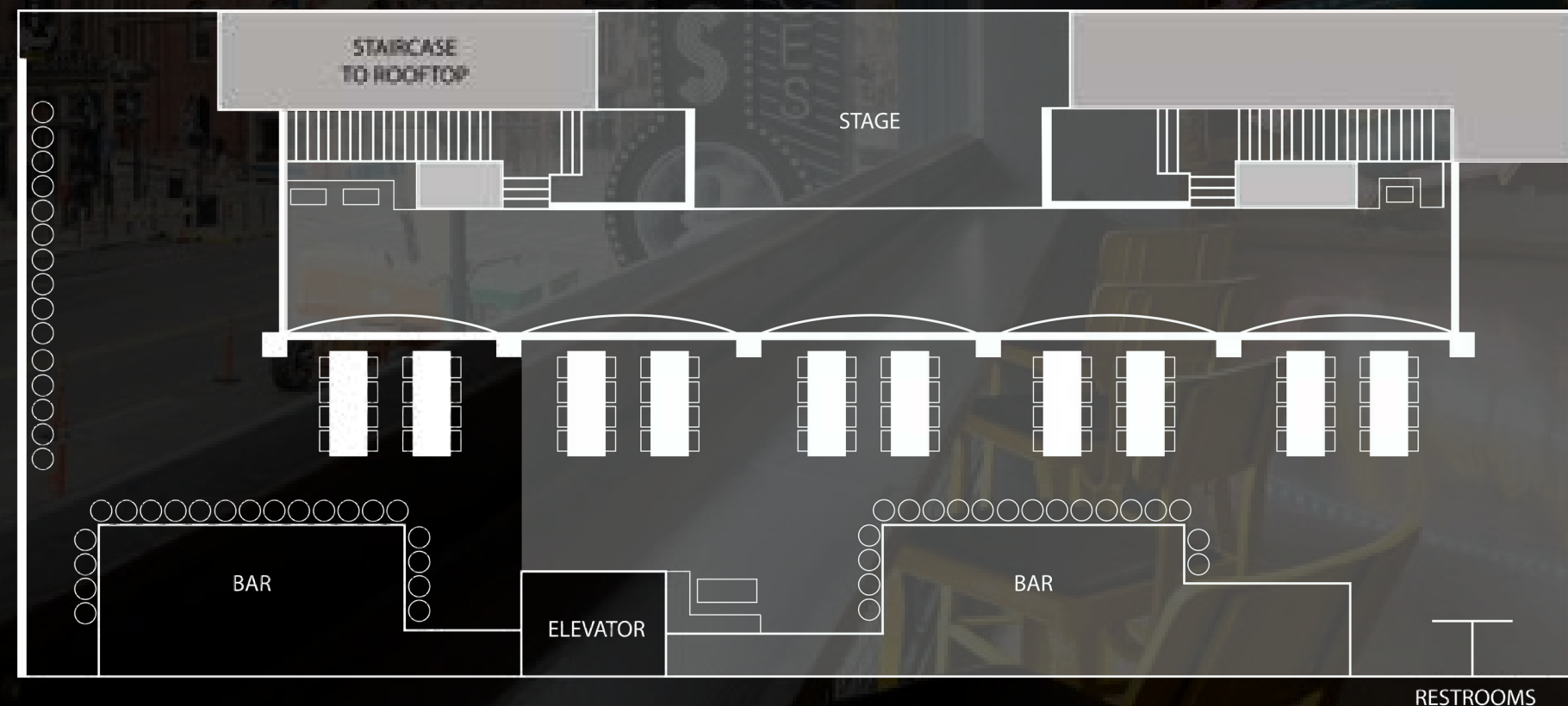


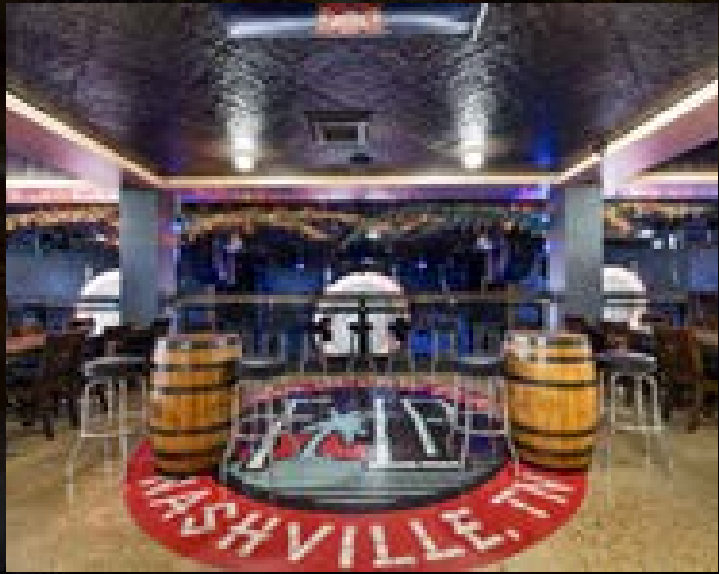
HONKY-TONK BROADWAY MEZZANINE



Experience a little bit of everything!
The Broadway Mezzanine lets your guests belly up to the mezzanine for the best views of the stage, all while having the best view of the Neon Neighborhood and your own dedicated bar.

LOCATION: 2ND FLOOR
CAPACITY: UP TO 150
APPROXIMATELY 1,280 SQFT




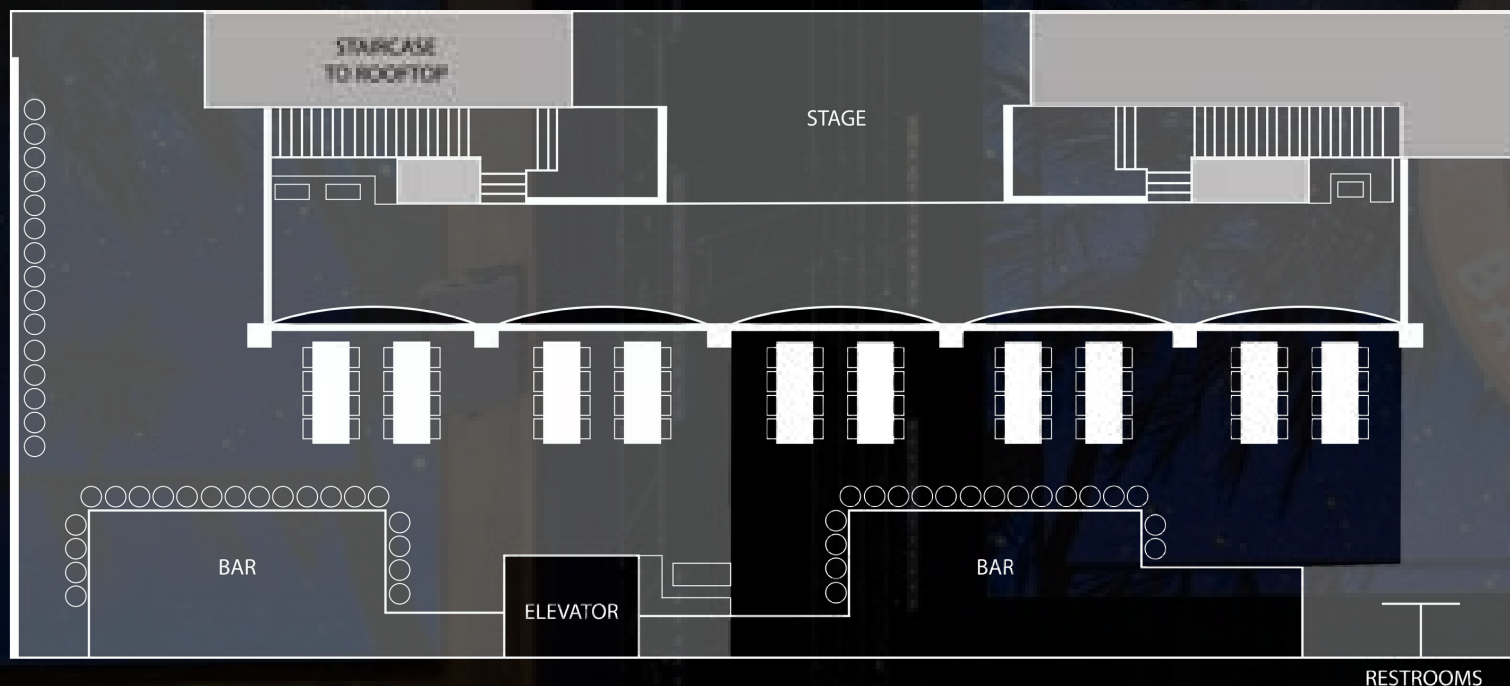


HONKY-TONK CENTER MEZZANINE

Front row seats to the largest honky-tonk in the Neon Neighborhood! This dedicated area allows your guests to get the best views of the stage, grab a drink at their own dedicated bar, and all while avoiding the crowds.

LOCATION: 2ND FLOOR
CAPACITY: UP TO 150
APPROXIMATELY 2,250 SQFT

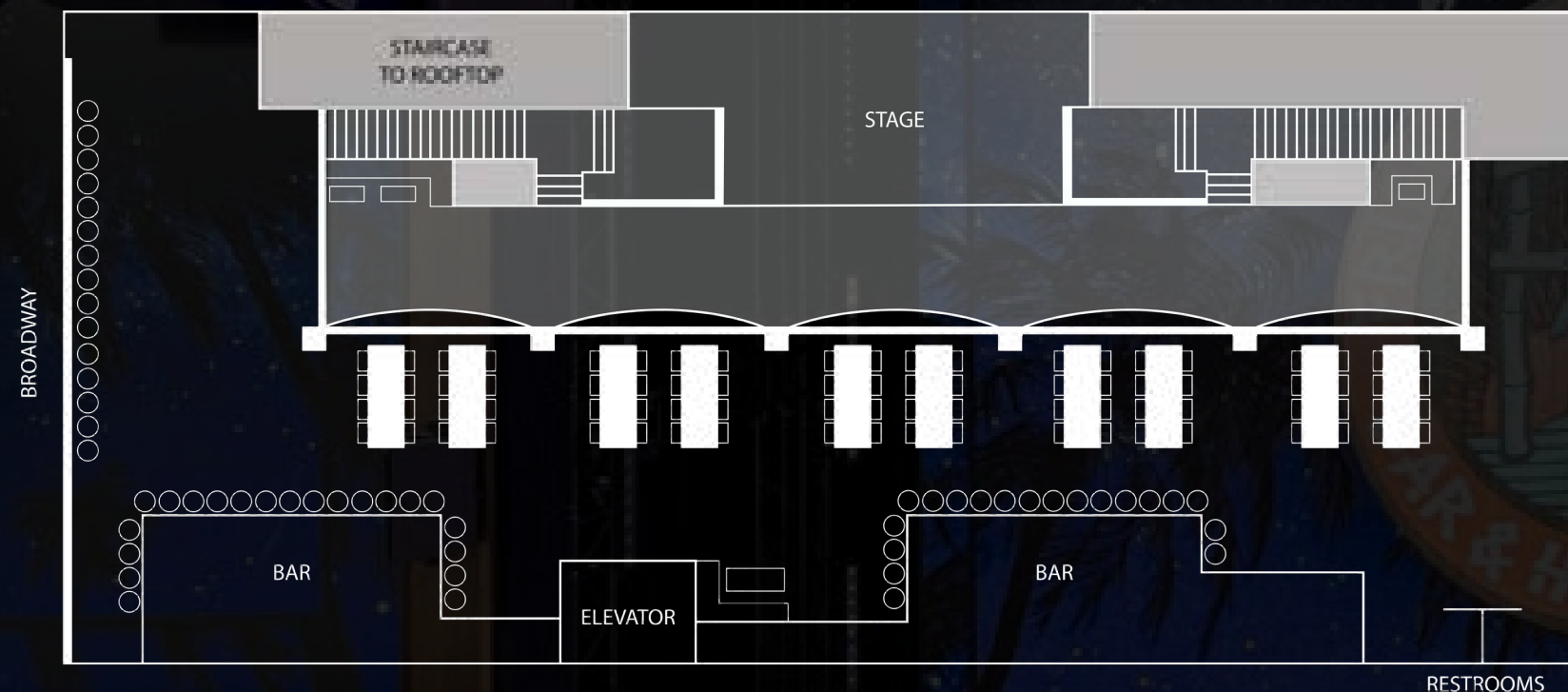
 www.friendsbarnashville.com
events@friendsbarnashville.com | (615) 669-4711



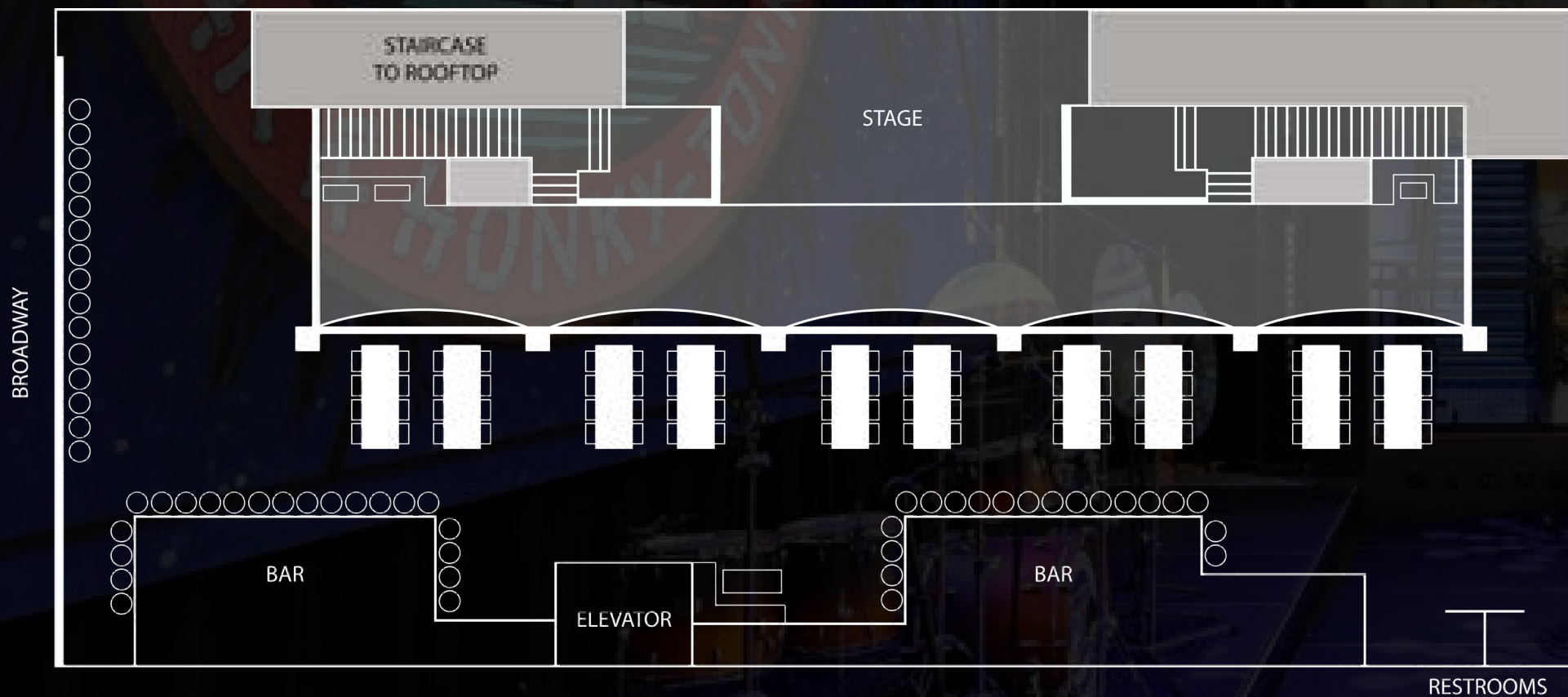
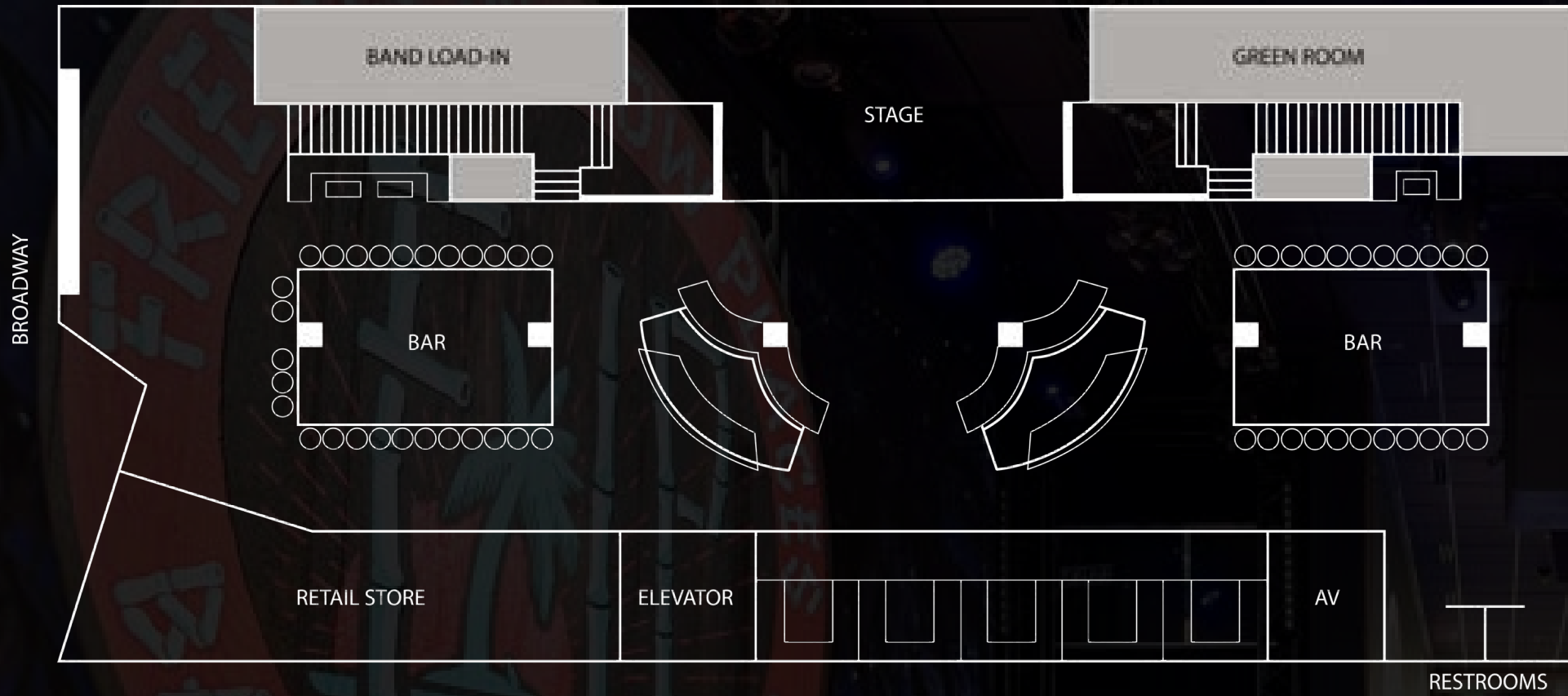
HONKY-TONK 2ND FLOOR BUYOUT

LOCATION: 2ND FLOOR
CAPACITY: UP TO 350
APPROXIMATELY 3,530 SQFT

The 2nd Floor delivers the ultimate views. A massive mezzanine lets your guests have the ultimate vantage point of the action on stage. Floor to ceiling, accordeon-style windows open up completely onto Broadway. And two large bars allow for any type of beverage service.



www.friendsbarnashville.com
events@friendsbarnashville.com | (615) 669-4711



HONKY-TONK FULL BUYOUT

Take advantage of the best Friends in Low Places has to offer with a full buyout of the Honky-Tonk. With over 30 televisions, floor-to-ceiling LED screens, and dynamic seating options, your guests will have the ultimate Broadway experience.

LOCATION: 1ST + 2ND FLOORS
CAPACITY: 1,075
APPROXIMATELY 13,030 SQFT



www.friendsbarnashville.com
events@friendsbarnashville.com | (615) 669-4711

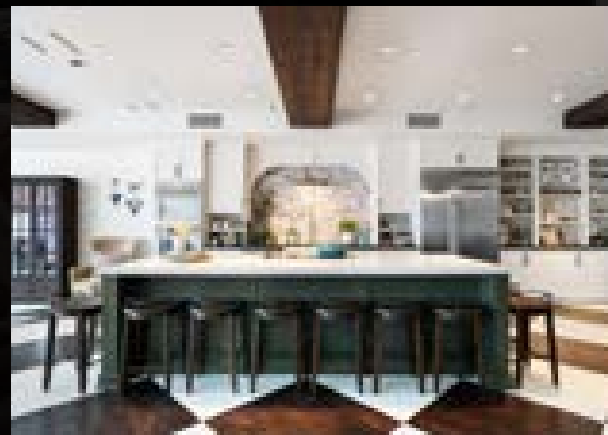
LOCATION: 3RD FLOOR
CAPACITY: UP TO 175
APPROXIMATELY 5,000 SQFT



THE 3RD FLOOR

The 3rd Floor of Friends In Low Places features the venue's trio of private event spaces. A sprawling 5,000 square feet, each space is designed to echo the warm and inviting atmosphere of Garth and Trisha's home. Complete with a charming double-sided fireplace and an intimate patio, these areas offer the perfect setting for gatherings of up to 175 guests. Each of these three distinct spaces are enhanced by furniture pieces hand-selected by Garth and Trisha, and a diverse selection of menus created by Trisha Yearwood to accommodate any occasion.

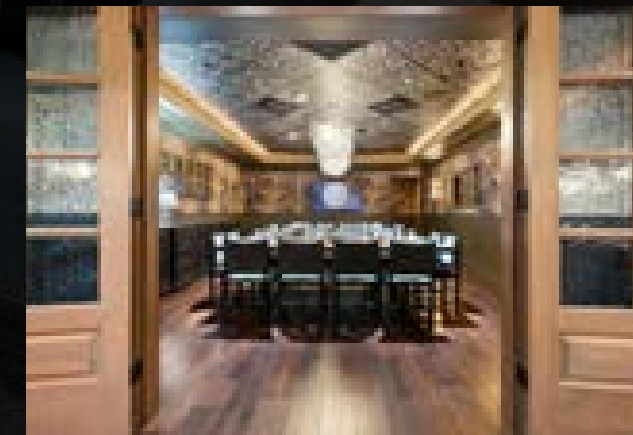
Trisha's Studio Kitchen



The Monticello Room



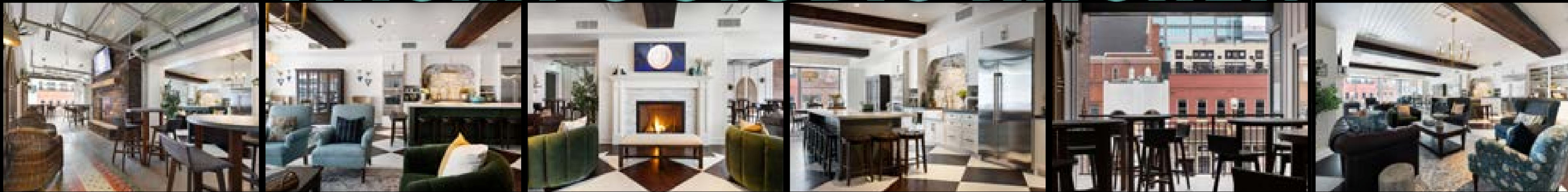
The Gwendolyn Room



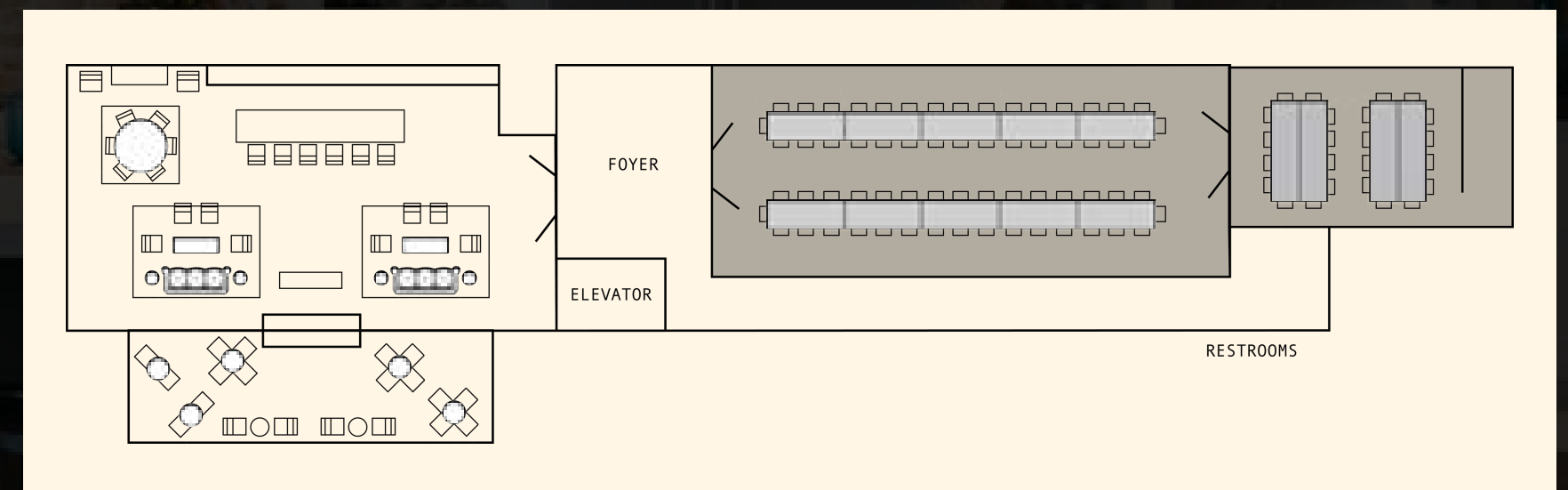
LOCATION: 3RD FLOOR
CAPACITY: UP TO 75
APPROXIMATELY 1,800 SQFT



3RD FLOOR TRISHA'S STUDIO KITCHEN



Trisha's Studio Kitchen draws inspiration from the Concord House featured on the Emmy-award-winning Trisha's Southern Kitchen. Designed for versatility, the space is surrounded by seating that's both soft and flexible. Accented by rustic wood beams and wallpaper that evoke the spirit of the south, this space is perfect for a variety of events, from relaxed gatherings to formal dining. A hidden patio and a cozy double-sided fireplace blur the lines between indoor comfort and outdoor charm. Styled with traditional Southern flair and equipped with climate-controlled garage doors, the patio extends 415 square feet.



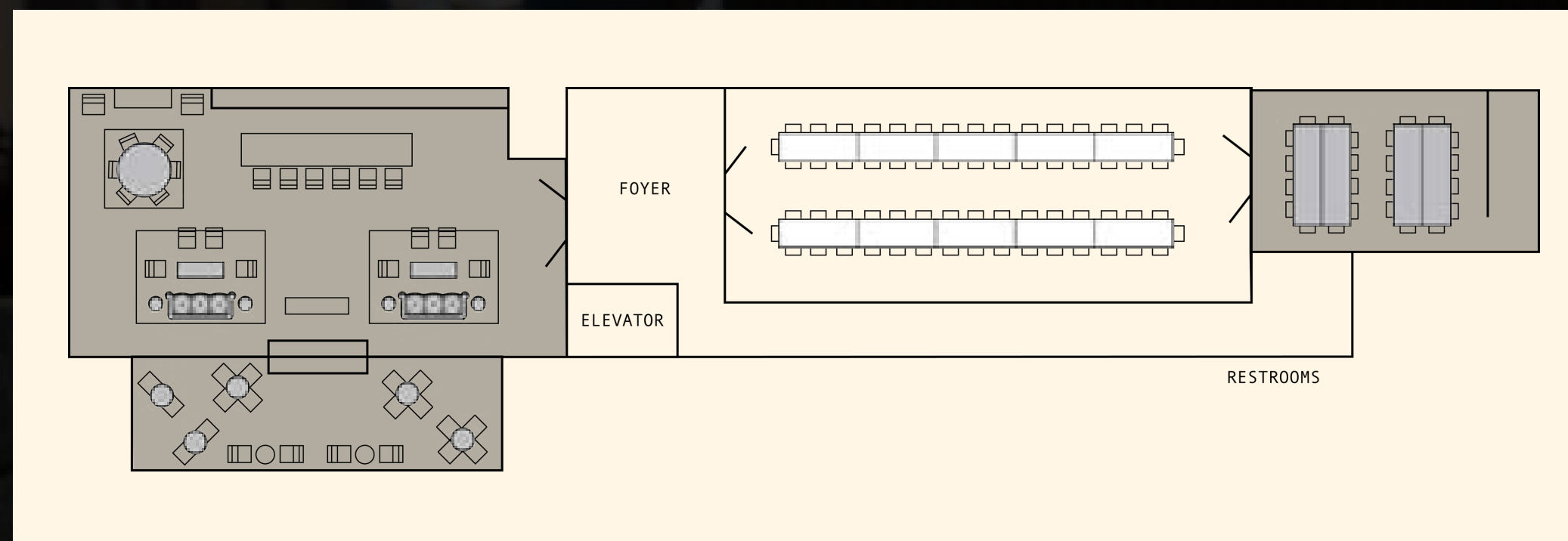
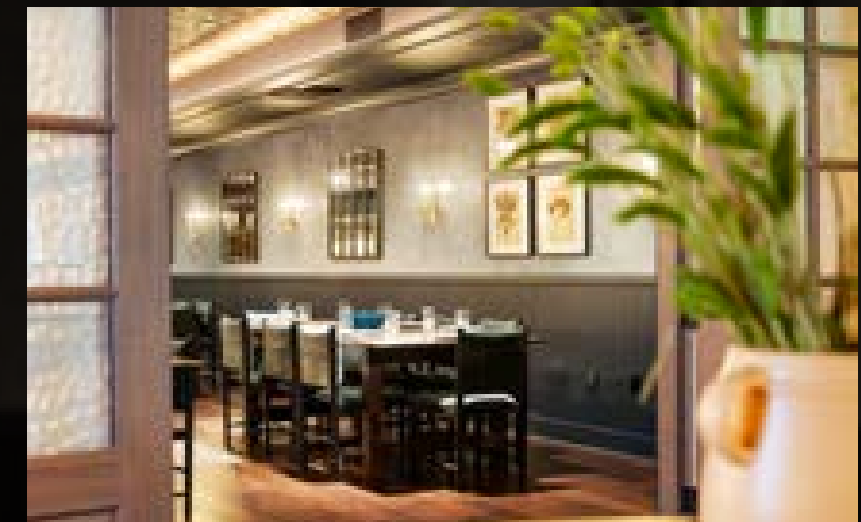
www.friendsbarnashville.com
events@friendsbarnashville.com | (615) 669-4711

LOCATION: 3RD FLOOR
CAPACITY: 80 SEATED / 110 STANDING
APPROXIMATELY 1,225 SQFT



3RD FLOOR THE MONTICELLO ROOM

The Monticello Room is a space that embodies elegance and comfort. Perfect for various gatherings such as seated dinners, reception-style events, or corporate meetings, The Monticello Room features wooden dining tables and plush chairs. The layout allows for easy customization to accommodate a variety of different event formats.



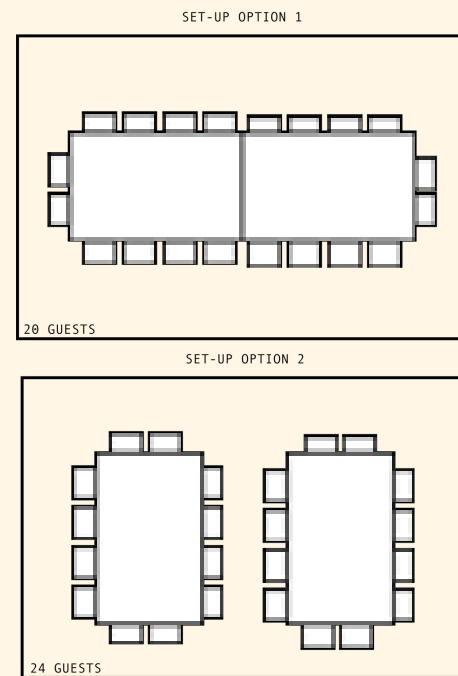
LOCATION: 3RD FLOOR
CAPACITY: 24 SEATED
APPROXIMATELY 415 SQFT



3RD FLOOR THE GWENDOLYN ROOM

Sitting adjacent to the Monticello Room, the Gwendolyn Room offers a touching tribute to Trisha Yearwood's mother, Gwen. The Gwendolyn Room is charmed with personal touches in her honor. Central to its charm is the Trisha Yearwood Gwendolyn Collection for Williams Sonoma, inspired by Gwen's intricate cake designs and sketches discovered by Trisha and her sister, Beth. The Gwendolyn Room, designed for intimate gatherings, seamlessly blends family heritage with the art of Southern hospitality, offering guests a truly unique dining experience.

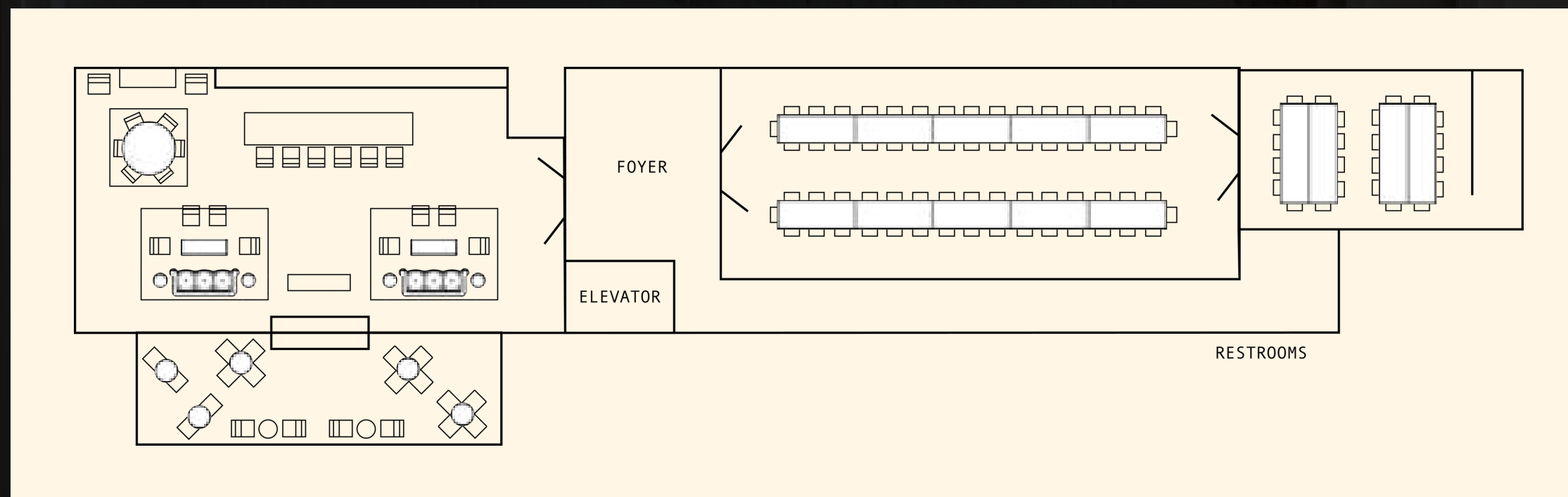
The room accommodates two types of table layouts for either 20 or 24 guests.



LOCATION: 3RD FLOOR
CAPACITY: UP TO 175
APPROXIMATELY 5,000 SQFT

3RD FLOOR FULL BUYOUT

Delight your guests with multiple experiences on the third floor of Friends in Low Places. Host a cocktail hour overlooking Broadway in Trisha's Studio Kitchen. Dine with your party in The Monticello Room, followed by reception-style dessert in The Gwendolyn Room. Enjoy after-dinner drinks on your climate controlled, private patio.



www.friendsbarnashville.com
events@friendsbarnashville.com | (615) 669-4711

THE OASIS

LOCATION: 4TH FLOOR
CAPACITY: 700
APPROXIMATELY 10,000 SQFT

The Oasis, boasting the largest rooftop in the Neon Neighborhood, invites guests to “Slip on Up To the Oasis,” a rooftop paradise with its beach-y theme and lush 10- foot palm trees.

With retractable garage doors that seamlessly blend the interior space with the allure of the open-air patio, every aspect of The Oasis is designed to provide an exceptional rooftop party experience above the neon lights of Broadway.



OASIS SEMI PRIVATE AREAS

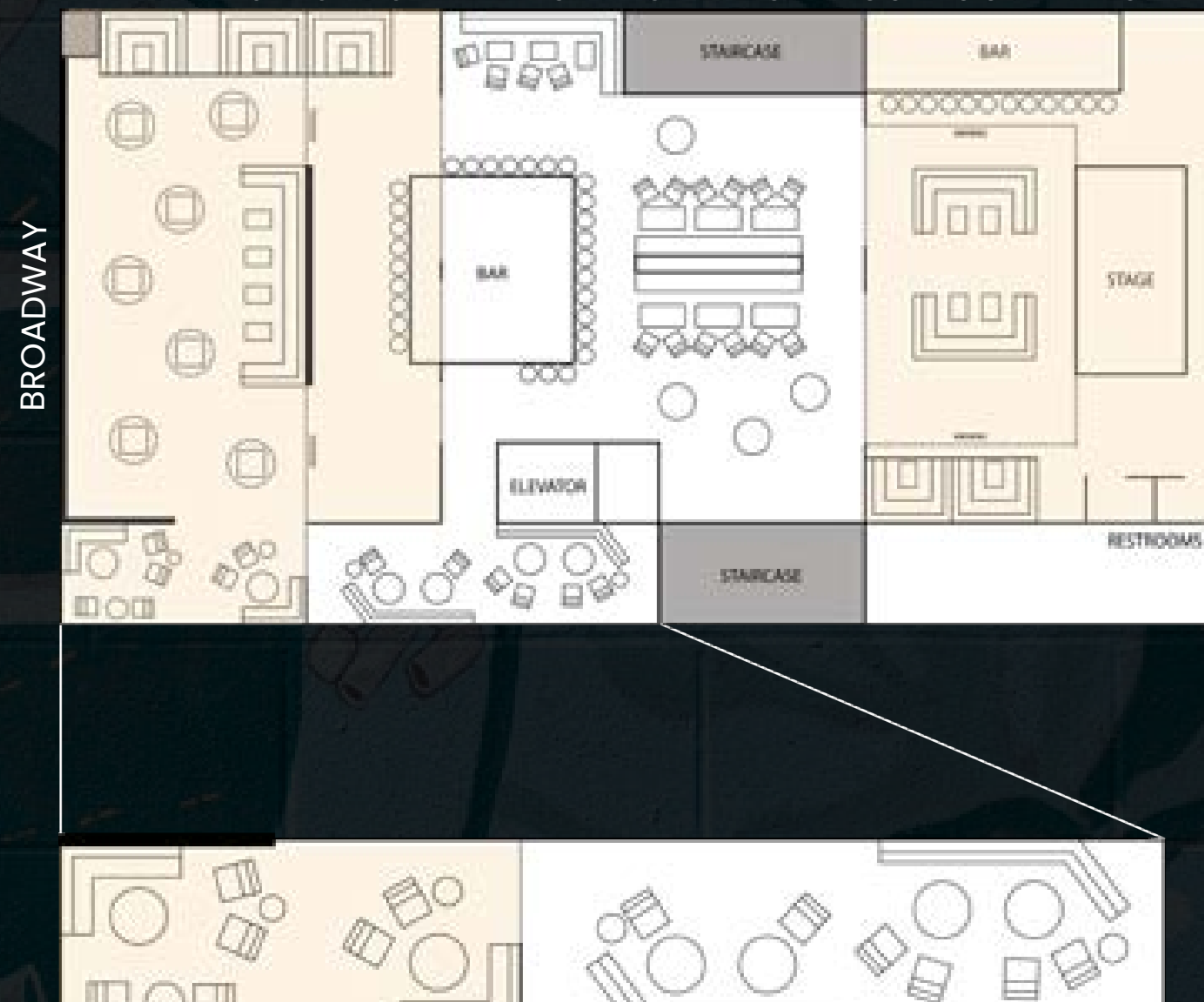
LOCATION: 4TH FLOOR
CAPACITY: 29 INDOOR / 20 OUTDOOR
APPROXIMATELY 745 SQFT



Semi-Private areas within The Oasis allow guests to be a part of the action while having their own space for reprieve. With indoor and outdoor options, views of Broadway, and semi-private entrances, your guests will feel like the ultimate VIPs.



*AREAS HIGHLIGHTED IN ORANGE INDICATE OUTDOOR AREAS

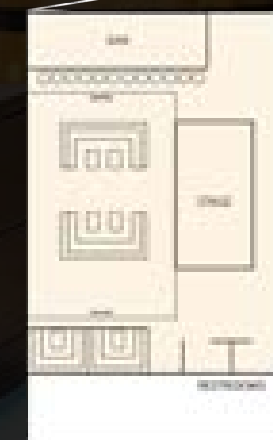




OASIS TIKI BAR



*AREAS HIGHLIGHTED IN ORANGE INDICATE OUTDOOR AREAS



A private Tiki Bar in the middle of the Neon Neighborhood! This area of our rooftop features a full stage, custom banquette seating, and a tropical themed bar and awning.

LOCATION: 4TH FLOOR
CAPACITY: UP TO 165
APPROXIMATELY 2,275 SQFT



www.friendsbarnashville.com
events@friendsbarnashville.com | (615) 669-4711

LOCATION: 4TH FLOOR
CAPACITY: 200
APPROXIMATELY 2,750 SQFT



OASIS BROADWAY

Experience the best sights of the Neon Neighborhood! An indoor/outdoor bar centers the floor, various types of soft seating, tables, and custom furniture energize the design, and a drink rail expands the entire width of the roof so your guests can belly up to the views!



*AREAS HIGHLIGHTED IN ORANGE INDICATE OUTDOOR AREAS

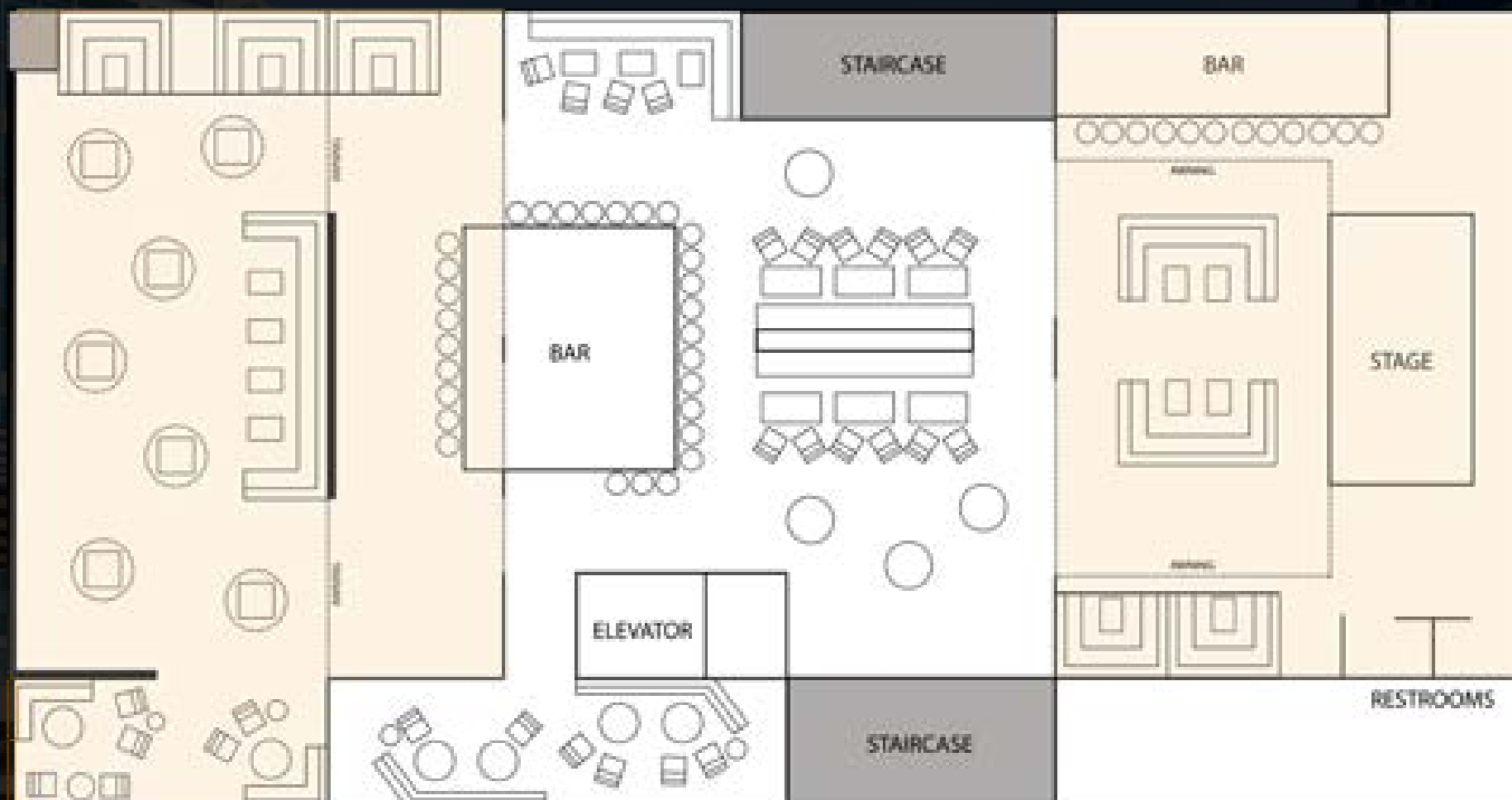




OASIS FULL BUYOUT

The Oasis features two full bars, an outdoor stage, ample built-in and soft seating, televisions and LED ticker tapes throughout, and dynamic seating options from barstools, high-top tables, soft seating, and custom banquettes.

An indoor/outdoor bar centers the floor, with various types of soft seating, tables, and custom furniture that energize the design. A drink rail expands the entire width of the roof, so your guests can belly up to the views.



*AREAS HIGHLIGHTED IN ORANGE INDICATE OUTDOOR AREAS

LOCATION: 4TH FLOOR
CAPACITY: 700
APPROXIMATELY 10,000 SQFT



www.friendsbarnashville.com
events@friendsbarnashville.com | (615) 669-4711



THANK YOU.



 **GET IN TOUCH**
WITH US