



Eye catching metallic, reflective and glittering vinyls for cut lettering applications and printed graphics.

VinylEfx

Available in both Indoor and Outdoor series (<3 years outdoors) with permanent adhesive

Easy application to flat, smooth surfaces – dry application only

Cuts and weeds easily

Apply cut letters with a high tack application tape, such as RTape® Conform® 4075RLA or 4775RLA or Clear Choice® AT65 or AT75.1. For digitally printed and UV screen printed wide format graphics, use a medium tack tape, such as RTape® Conform® 4760RLA application tape

Allow for 6 mm border around the edges of printed graphics

Overlaminates can be used if extra protection is required

Print Compatibility: (Eco-)Solvent, UV, Screen, Latex*

*Kindly consult your sales manager to verify compatibility for latex printing.

Indoor applications

Point-of-Purchase posters

Tradeshow graphics

Retail display

Decorative signage

Outdoor applications

Vehicle graphics

Window shop designs graphics

Retail display

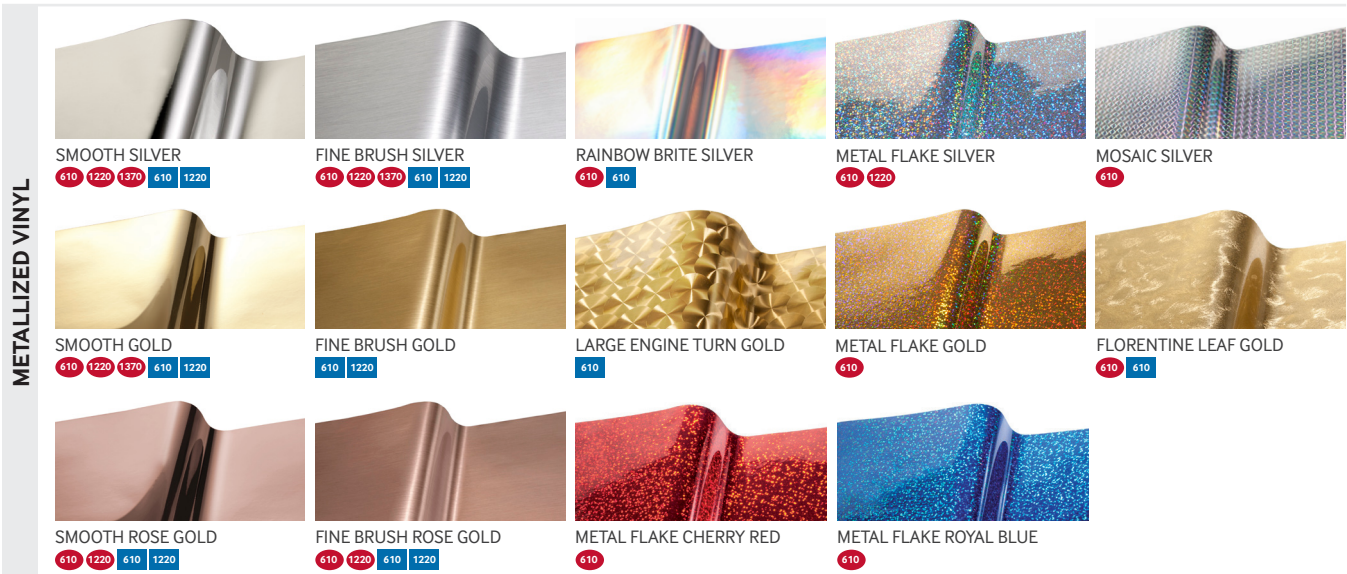
Decorative signage

Vehicle graphics

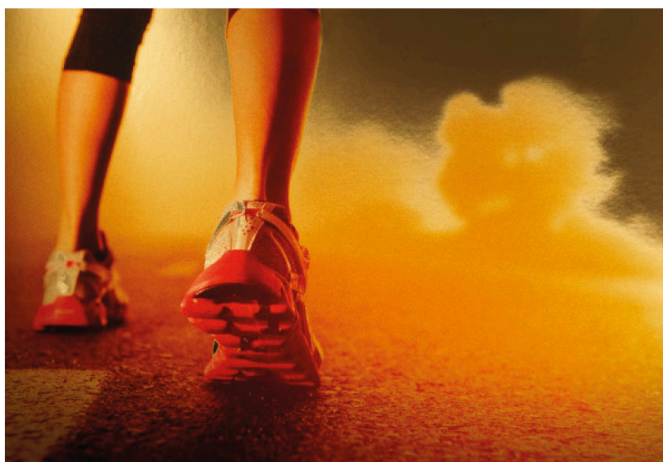
Window show designs

PRODUCT OVERVIEW ▶

● Indoor: Roll Width (mm) | ■ Outdoor: Roll Width (mm)



| | | 610mm x 45,7m | 1220mm x 45,7m | 1370mm x 45,7m |
|-------------------|------------|---------------|----------------|----------------|
| Pattern | Colour | Stocked Sizes | | |
| Smooth | Silver | ● ■ | ● ■ | ● |
| | Gold | ● ■ | ● ■ | ● |
| | Rose Gold | ● ■ | ● ■ | |
| Fine Brush | Silver | ● ■ | ● ■ | ● |
| | Gold | ■ | ■ | |
| | Rose Gold | ● ■ | ● ■ | |
| Rainbow Brite | Silver | ● ■ | | |
| Mosaic | Silver | ● | | |
| | Silver | ● | ● | |
| Metal Flake | Gold | ● | | |
| | Cherry Red | ● | | |
| | Royal Blue | ● | | |
| | Royal Blue | ● | | |
| Florentine Leaf | Gold | ● ■ | | |
| Large Engine Turn | Gold | ■ | | |



| Pattern/Colour | SKU# | Size |
|-------------------------------|--------------|----------------|
| Indoor | | |
| Smooth Silver | VX1764-24150 | 610mm x 45,7m |
| | VX1764-48150 | 1220mm x 45,7m |
| | VX1764-54150 | 1370mm x 45,7m |
| Smooth Gold | VX2293-24150 | 610mm x 45,7m |
| | VX2293-48150 | 1220mm x 45,7m |
| | VX2293-54150 | 1370mm x 45,7m |
| Smooth Rose Gold | VX5439-24150 | 610mm x 45,7m |
| | VX5439-48150 | 1220mm x 45,7m |
| Fine Brush Silver | VX6770-24150 | 610mm x 45,7m |
| | VX6770-48150 | 1220mm x 45,7m |
| | VX6770-54150 | 1370mm x 45,7m |
| Fine Brush Rose Gold | VX5003-24150 | 610mm x 45,7m |
| | VX5003-48150 | 1220mm x 45,7m |
| Rainbow Brite Silver | VX3138-24150 | 610mm x 45,7m |
| Mosaic Silver | VX8241-24150 | 610mm x 45,7m |
| Metal Flake Silver | VX2716-24150 | 610mm x 45,7m |
| | VX2716-48150 | 1220mm x 45,7m |
| Metal Flake Gold | VX5186-24150 | 610mm x 45,7m |
| Metal Flake Cherry Red | VX8833-24150 | 610mm x 45,7m |
| Metal Flake Royal Blue | VX7319-24150 | 610mm x 45,7m |
| Florentine Leaf Gold | VX1754-24150 | 610mm x 45,7m |

| Pattern/Colour | SKU# | Size |
|-------------------------------|--------------|----------------|
| Outdoor | | |
| Smooth Silver | VX9809-24150 | 610mm x 45,7m |
| | VX9809-48150 | 1220mm x 45,7m |
| Smooth Gold | VX9387-24150 | 610mm x 45,7m |
| | VX9387-48150 | 1220mm x 45,7m |
| Smooth Rose Gold | VX4577-24150 | 610mm x 45,7m |
| | VX4577-48150 | 1220mm x 45,7m |
| Fine Brush Silver | VX4126-24150 | 610mm x 45,7m |
| | VX4126-48150 | 1220mm x 45,7m |
| Fine Brush Gold | VX6582-24150 | 610mm x 45,7m |
| | VX6582-48150 | 1220mm x 45,7m |
| | VX3922-24150 | 610mm x 45,7m |
| Fine Brush Rose Gold | VX3922-48150 | 1220mm x 45,7m |
| Rainbow Brite Silver | VX1488-24150 | 610mm x 45,7m |
| Large Engine Turn Gold | VX8966-24150 | 610mm x 45,7m |
| Florentine Leaf Gold | VX1566-24150 | 610mm x 45,7m |

TECHNICAL DATA ▶

| | | Indoor | Outdoor |
|----------------------------|-----------------|--|--|
| Physical Properties | | | |
| Finish | | Various - See Chart | Various - See Chart |
| Colour | | Various - See Chart | Various - See Chart |
| Adhesive | | Clear permanent acrylic | Clear permanent acrylic |
| Film | | Metallized PVC | UV-resistant metallized PVC |
| Liner | | 143 gsm one side PE-coated white kraft paper | 143 gsm one side PE-coated white kraft paper |
| Opacity | | 2,2 minimum | 2,2 minimum |
| Thickness | Film | 80 microns | 80 microns |
| | Film + Adhesive | 100 microns | 100 microns |
| Adhesion* | | 28 N/100 mm | Good adhesion to a wide variety of signs |
| Weight | Film + Adhesive | 127 - 142 gsm | 127 - 142 gsm |
| | Total w/ Liner | 270 - 290 gsm | 270 - 290 gsm |

| | | Indoor | Outdoor |
|-----------------------------|--|-----------------|----------------|
| Conditions for Use | | | |
| Shelf Life | | 1 year | 1 year |
| Outdoor Durability | | Indoor use only | Up to 3 years* |
| Min Application Temp | | 4° C | 4° C |
| Service Temp Range | | -29° to 55° C | -29° to 55° C |
| Solvent Resistance | | Yes | Yes |
| Water Resistance | | No | No** |

*Note: To ensure optimum service life, we recommend that all exterior applications are edge sealed (with a graphic edge sealer)

**Edge sealing is recommended in high solvent exposure areas

WARRANTY The information provided herein is correct to the best of Nekoosa's knowledge. No liability for any errors, facts or opinions are accepted. Customers must satisfy themselves as to the suitability of this product for their application. No responsibility for any loss as a result of any person placing reliance on any material contained herein will be accepted.

If the "gel spots" are smaller than 3mm and there are no more than 10 "gel spots" per 0.8m² (1 Square yard) this is acceptable and can not be a reason for complaint.