

Tone Nutrient Mitigation Scheme

Our Nutrient Mitigation project on the River Tone was the first in the UK to use our drainage ditch approach to nutrient mitigation.

ABOUT THE SCHEME

Just outside Wellington, Somerset, KS Coles, a family farming business spanning three generations, has developed two flagship nature-based nutrient neutrality schemes: Trinity Farm Nature Reserve and Eastcombe Fields Nature Area.

These sites deliver verified nutrient mitigation for developments in the River Tone catchment, supporting sustainable growth while restoring local ecosystems.

The twin sites at Trinity Farm Nature Reserve and Eastcombe Fields Nature Area use various innovative measures to remove phosphorus.

The site was the first in the UK to use our drainage ditch approach to nutrient mitigation in addition to a series of retention ponds and land use change for the BNG units.

These methods allow us to generate much greater yield per hectare than other measures which allow us to price very competitively. The scheme serves the River Tone Catchment covering Wellington, Taunton and onwards downstream.

The scheme is secured for the in perpetuity period using a Section 106 Agreement ensuring that developers have no further liability once they have discharged their requirements.

Nutrient Neutrality

Nutrients

Phosphorus

Status:

Live

Somerset

Approved via Section 106

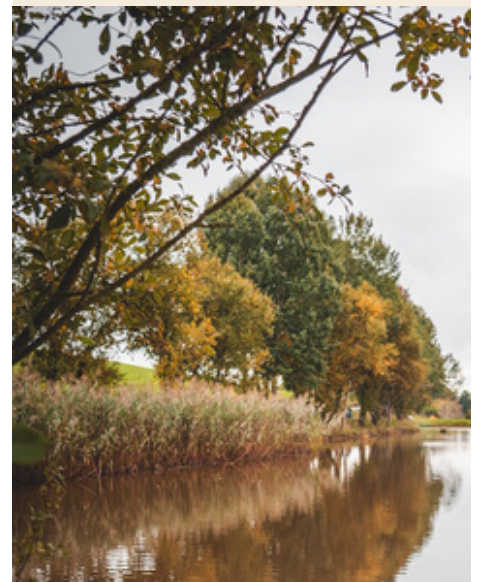
CONTACT

Dr Gabriel Connor Streich

CEO

[E Gabriel@greenshank-environmental.com](mailto:Gabriel@greenshank-environmental.com)

[T 07891466984](tel:07891466984)



TOWNS & CITIES

- Taunton
- Wellington

LPAS

- Somerset LPA

READY TO BUY YOUR BNG UNITS?

You can now buy online @ [Greenshank-environmental.com](https://www.greenshank-environmental.com)
Or contact us at sales@greenshank-environmental.com
for a bespoke order

Greenshank